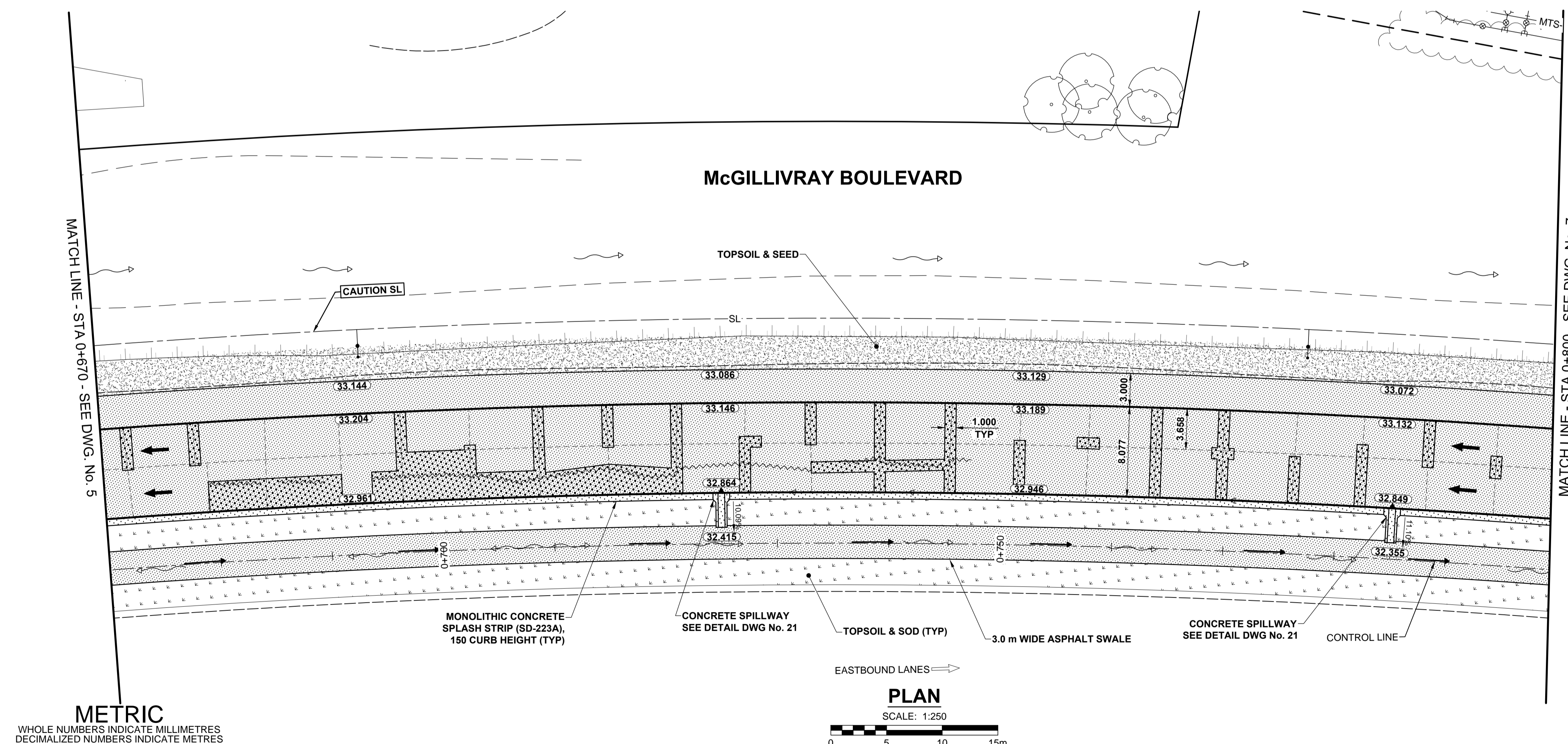
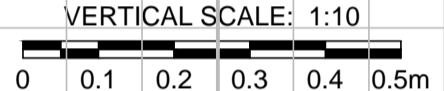
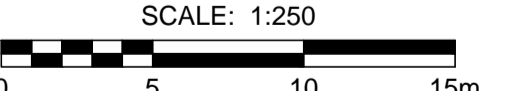


PAVEMENT PROFILE



PLAN



- NOTES**
- ADJUST MH AND CB RIMS TO NEW GRADES.
 - CONTRACTOR TO REGRADE/RENEW EXISTING PRIVATE SIDEWALKS TO LIMITS AS SHOWN. SIDEWALKS TO BE RENEWED WITH CONCRETE UNLESS NOTED OTHERWISE.
 - CONTRACTOR TO TAKE PRECAUTIONARY STEPS TO PROTECT EXISTING TREES WITHIN THE LIMITS OF CONSTRUCTION FROM DAMAGE FROM CONSTRUCTION ACTIVITIES AS OUTLINED IN THE SPECIFICATIONS.
 - MODIFIED BARRIER CURB TO BE CONSTRUCTED AT ALL INTERSECTION RADII, BACK LANE RADII AND BULLNOSES.
 - CONTRACTOR TO CONFIRM THE LOCATION OF ALL UTILITIES/SERVICES IN THE FIELD PRIOR TO CONSTRUCTION.
 - ADD 200.000m TO ABBREVIATED ELEVATIONS TO OBTAIN GEODETIC ELEVATIONS.
 - CB SD-024 OFFSETS ARE DIMENSIONED TO BOC. CB SD-025 OFFSETS ARE DIMENSIONED O.C.
 - ALL DIMENSIONS TO BACK OF CURB.

M:\Proj\W1700054_Design\Drawings\Sheets\W170005 McGillivray-PP-05.dwg
 Last Saved: 6/19/2017 2:40 PM by DDozsdzod
 Printed: 6/19/2017 3:45 PM by Daniel Doszod

METRIC
 WHOLE NUMBERS INDICATE MILLIMETRES
 DECIMALIZED NUMBERS INDICATE METRES

---	GAS	○	MANHOLE	●	CONCRETE PAVEMENT
—○—	MTS / PEDESTAL	□	CATCH BASIN / CATCH PIT	■	CONC SIDEWALK / MEDIAN
—□—	HYDRO / CABINET	△	CURB INLET WITH BOX	▲	ASPHALT PAVEMENT
—△—	CATV / FIBRE OPTIC	○	TREE	▨	PAVING STONE
—○—	TRAFFIC SIGNALS / PIT	⊕	TEST HOLE	▧	GRAVEL
—□—	LAND DRAINAGE SEWER	⊕	PROPERTY LINE	▩	RAMP CURB
—△—	SANITARY/COMBINED SEWER	⊕	SURVEY BAR	▧	PLANING / REMOVAL
—○—	CB LEAD / SSP / DCP	⊕	FENCE	---	
—□—	WATER MAIN	---	BOC / EDGE OF PAVEMENT	---	
—△—	SUBDRAIN	33.000	ELEVATION	(33.333)	
---	DITCH	---	TRAFFIC SIGN	---	
---	EXISTING	---	LEGEND - PLAN	---	EXISTING
---	NEW	---	LEGEND - PLAN	---	NEW

LOCATION APPROVED
 UNDERGROUND STRUCTURES

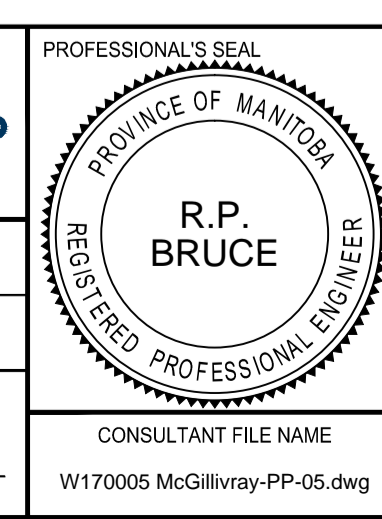
DATE: _____

NOTE:
 LOCATION OF UNDERGROUND STRUCTURES AS SHOWN ARE BASED ON THE BEST INFORMATION AVAILABLE BUT NO GUARANTEE IS GIVEN THAT ALL EXISTING UTILITIES ARE SHOWN OR THAT THE GIVEN LOCATIONS ARE EXACT. CONFIRMATION OF EXISTENCE AND EXACT LOCATION OF ALL SERVICES MUST BE OBTAINED FROM THE INDIVIDUAL UTILITIES BEFORE PROCEEDING WITH CONSTRUCTION.

BM 65-024	ELEV 232.001 m	5. side McGillivray Blvd., W. of Vincent St., in Manitoba Hydro transmission line, 7.8 m from Centreline and 27.9 m W. of C.L. base Point, W. of Vincent St., & 1.5 m S. of N. Curb line of McGillivray Pk. produced from the E.
No.	REVISIONS	

MORRISON HERSHFIELD

DESIGNED BY	WRJ	CHECKED BY	RPB
DRAWN BY	DID, DML	APPROVED BY	BWB
DATE	17/06/09	RELEASED FOR CONSTRUCTION	DATE
HOR SCALE	1:250		
VERT SCALE	1:10		
DATE	17/06/09		



THE CITY OF WINNIPEG
 PUBLIC WORKS DEPARTMENT
 ENGINEERING DIVISION

2017 REGIONAL AND LOCAL STREET RENEWAL PROGRAM
McGILLIVRAY BOULEVARD REHABILITATION
 WAVERLEY STREET TO PEMBINA HIGHWAY
 HORIZONTAL AND VERTICAL ALIGNMENT
 STA 0+670 TO STA 0+800

CITY DRAWING NUMBER: P-3482-6
 SHEET 6 OF 30
 DRAWING No. 6 REV B

BID OPPORTUNITY No. 300-2017