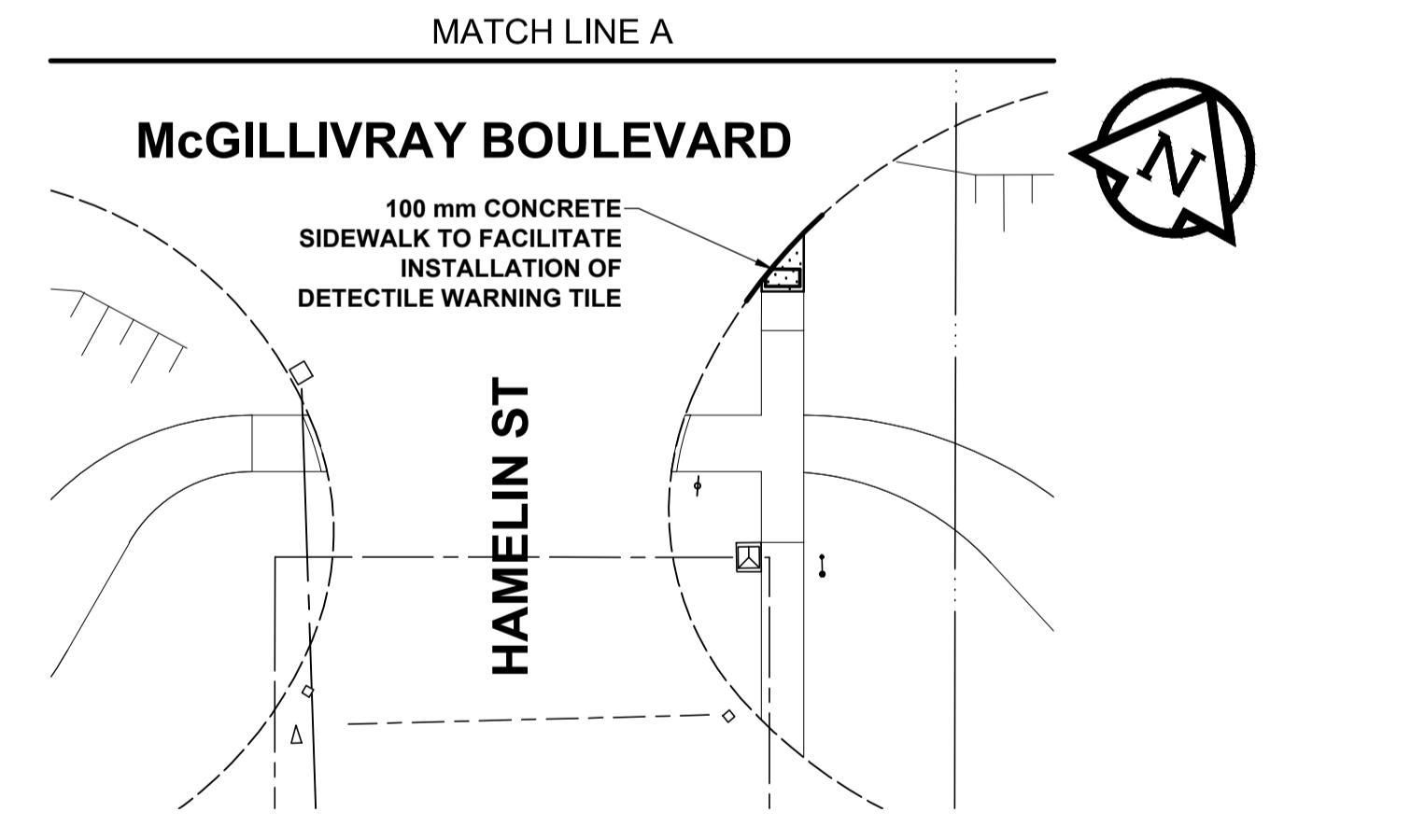
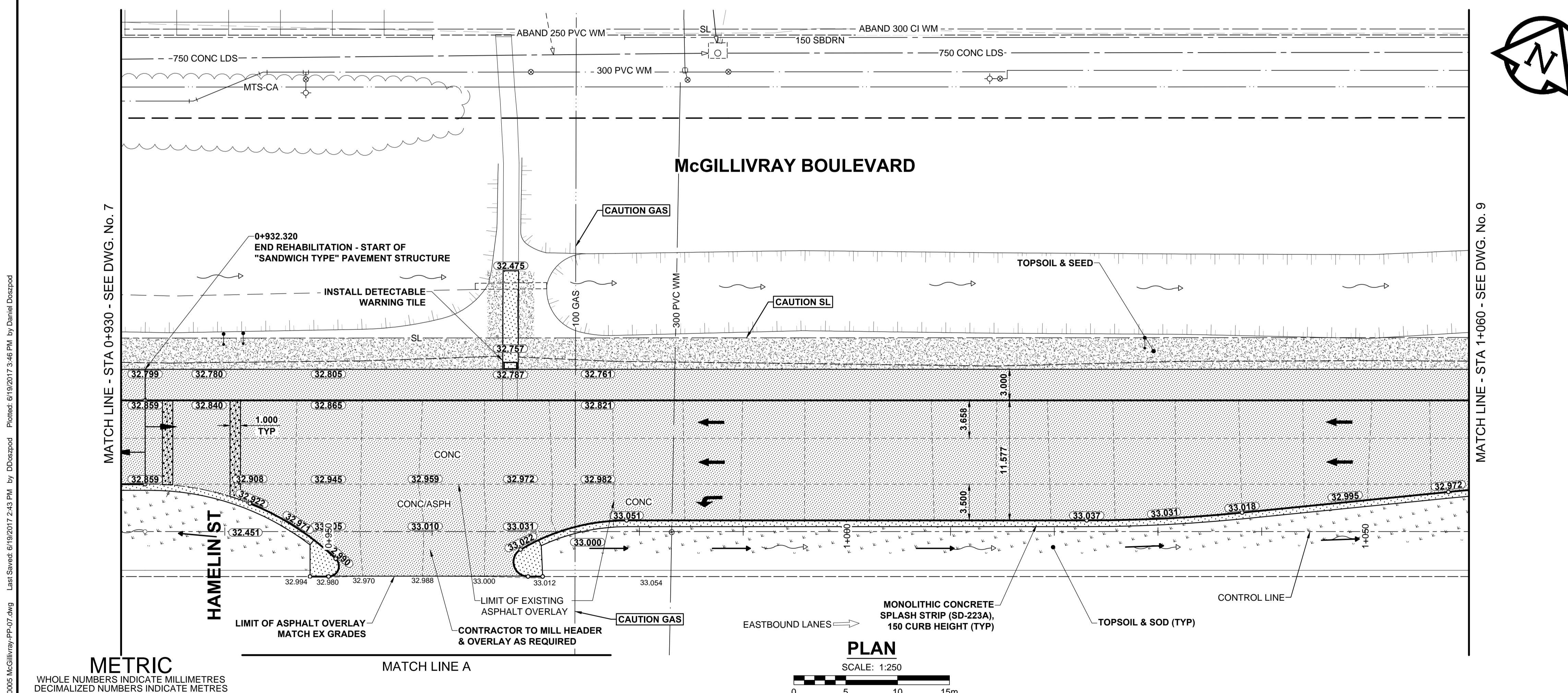


- NOTES**
- ADJUST MH AND CB RIMS TO NEW GRADES.
  - CONTRACTOR TO REGRADE/RENEW EXISTING PRIVATE SIDEWALKS TO LIMITS AS SHOWN. SIDEWALKS TO BE RENEWED WITH CONCRETE UNLESS NOTED OTHERWISE.
  - CONTRACTOR TO TAKE PRECAUTIONARY STEPS TO PROTECT EXISTING TREES WITHIN THE LIMITS OF CONSTRUCTION FROM DAMAGE FROM CONSTRUCTION ACTIVITIES AS OUTLINED IN THE SPECIFICATIONS.
  - MODIFIED BARRIER CURB TO BE CONSTRUCTED AT ALL INTERSECTION RADII, BACK LANE RADII AND BULLNOSES.
  - CONTRACTOR TO CONFIRM THE LOCATION OF ALL UTILITIES/SERVICES IN THE FIELD PRIOR TO CONSTRUCTION.
  - ADD 200.000m TO ABBREVIATED ELEVATIONS TO OBTAIN GEODETIC ELEVATIONS.
  - CB SD-024 OFFSETS ARE DIMENSIONED TO BOC. CB SD-025 OFFSETS ARE DIMENSIONED O/C.
  - ALL DIMENSIONS TO BACK OF CURB.



**METRIC**  
WHOLE NUMBERS INDICATE MILLIMETRES  
DECIMALIZED NUMBERS INDICATE METRES

---	GAS	○	MANHOLE	●	CONCRETE PAVEMENT	---	LOCATION APPROVED
---	MTS / PEDESTAL	□	CATCH BASIN / CATCH PIT	■	CONC SIDEWALK / MEDIAN	---	UNDERGROUND STRUCTURES
---	HYDRO / CABINET	△	CURB INLET WITH BOX	▲	ASPHALT PAVEMENT	---	DATE
---	CATV / FIBRE OPTIC	○	TREE	○	PAVING STONE	---	DATE
---	TRAFFIC SIGNALS / PIT	⊕	TH-12 TEST HOLE	⊕	GRAVEL	---	DATE
---	LAND DRAINAGE SEWER	---	PROPERTY LINE	---	RAMP CURB	---	DATE
---	SANITARY/COMBINED SEWER	---	SURVEY BAR	---	PLANING / REMOVAL	---	DATE
---	CB LEAD / SSP / DCP	---	FENCE	---	---	---	DATE
---	WATER MAIN	---	BOC / EDGE OF PAVEMENT	---	---	---	DATE
---	SUBDRAIN	---	ELEVATION (33.333)	---	---	---	DATE
---	DITCH	---	TRAFFIC SIGN	---	---	---	DATE
---	EXISTING	---	LEGEND - PLAN	---	---	---	DATE
---	NEW	---	LEGEND - PLAN	---	---	---	DATE

**LOCATION APPROVED**  
UNDERGROUND STRUCTURES

DATE

**NOTE:**  
LOCATION OF UNDERGROUND STRUCTURES AS SHOWN ARE BASED ON THE BEST INFORMATION AVAILABLE BUT NO GUARANTEE IS GIVEN THAT ALL EXISTING UTILITIES ARE SHOWN OR THAT THE GIVEN LOCATIONS ARE EXACT. CONFIRMATION OF EXISTENCE AND EXACT LOCATION OF ALL SERVICES MUST BE OBTAINED FROM THE INDIVIDUAL UTILITIES BEFORE PROCEEDING WITH CONSTRUCTION.

BM 65-024	ELEV 232.001 m	S. side McGillivray Blvd., W. of Vincent St., in Manitoba Hydro transmission line, 7.8 m. S. of C.C.L. base line, W. of Vincent St., & 1.5 m. S. of N. curb line of McGillivray Pl., produced from the E.
B	ISSUED FOR TENDER	17/06/20 JGK
A	ISSUED FOR CLIENT REVIEW	17/06/09 JGK
No.	REVISIONS	YYMMDD BY

**MORRISON HERSHFIELD**

DESIGNED BY: WRJ  
DRAWN BY: DID, DML

CHECKED BY: RPB  
APPROVED BY: BWB

RELEASED FOR CONSTRUCTION

HOR SCALE: 1:250  
VERT SCALE: 1:10

DATE: 17/06/09

PROFESSIONAL'S SEAL  
PROVINCE OF MANITOBA  
REGISTERED PROFESSIONAL ENGINEER  
**R.P. BRUCE**  
CONSULTANT FILE NAME  
W170005 McGillivray-PP-07.dwg

**THE CITY OF WINNIPEG**  
PUBLIC WORKS DEPARTMENT  
ENGINEERING DIVISION

2017 REGIONAL AND LOCAL STREET RENEWAL PROGRAM  
**McGILLIVRAY BOULEVARD**  
REHABILITATION  
WAVERLEY STREET TO PEMBINA HIGHWAY  
HORIZONTAL AND VERTICAL ALIGNMENT  
STA 0+930 TO STA 1+060

CITY DRAWING NUMBER: P-3482-8  
SHEET 8 OF 30  
DRAWING No. 8 REV B

BID OPPORTUNITY No. 300-2017