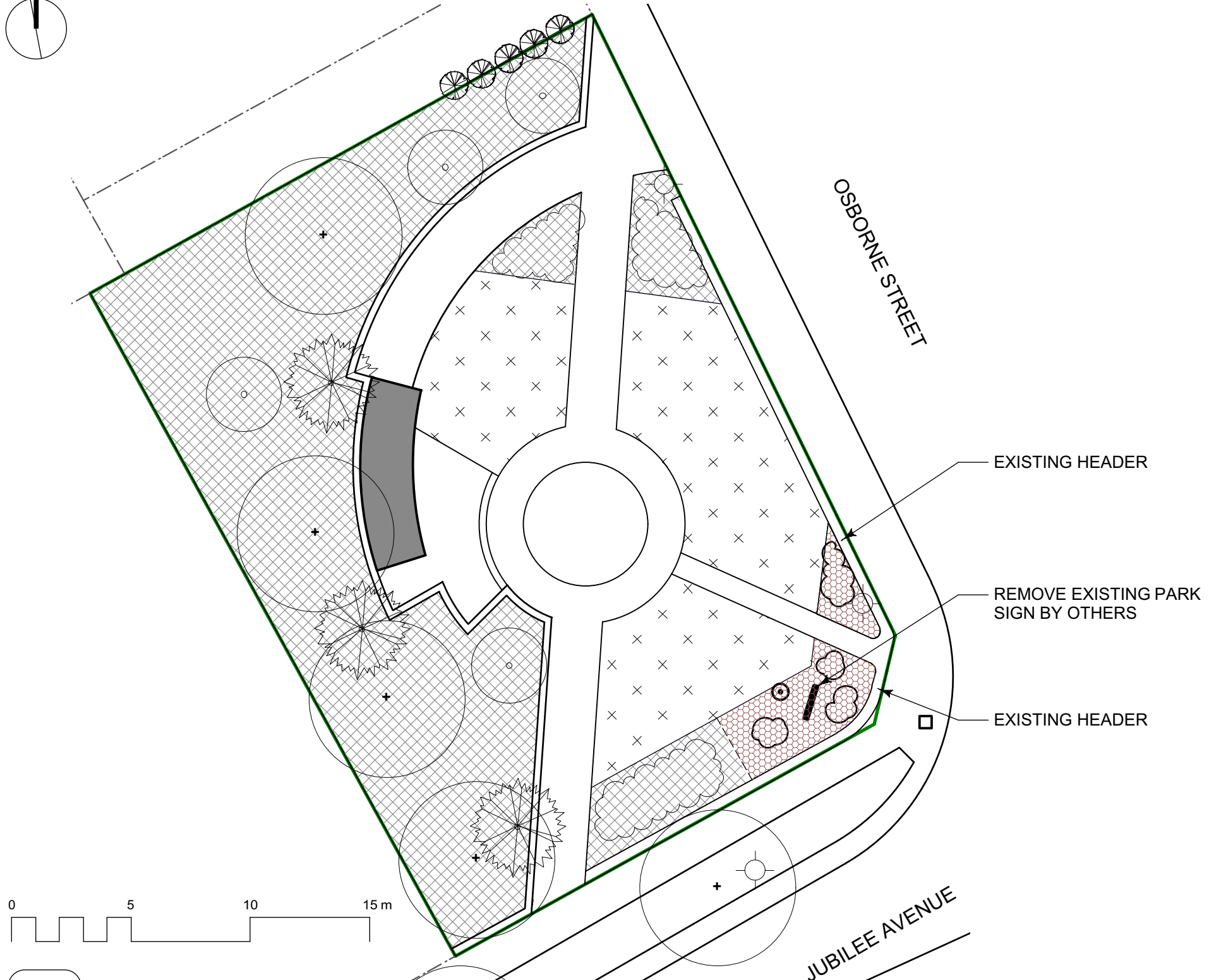


LEGEND

- CoW PROPERTY LINE
- CoW PARKS PROPERTY LINE
- PRIVATE PROPERTY LINE
- SOD
- EXISTING SHRUB BED
- REMOVE SHRUBS -BY OTHERS
- LIGHT POST
- FLAG POLE
- CROSSWALK LIGHT
- TREES (APPROXIMATE LOCATION)
- SHRUBS (APPROXIMATE LOCATION)



NOTES

1. ALL WORK TO CONFORM TO CURRENT CITY OF WINNIPEG STANDARD CONSTRUCTION SPECIFICATIONS AND DETAILS UNLESS OTHERWISE NOTED.
2. DIMENSIONS ARE IN METERS UNLESS OTHERWISE NOTED.

CONTRACTOR TO CONFIRM ALL DIMENSIONS AND REPORT ANY DISCREPANCIES TO CONTRACT ADMINISTRATOR PRIOR TO CONSTRUCTION. LOCATION OF UNDERGROUND STRUCTURES AS SHOWN ARE BASED ON THE BEST INFORMATION AVAILABLE BUT NO GUARANTEE IS GIVEN THAT ALL EXISTING UTILITIES ARE SHOWN OR THAT THE GIVEN LOCATIONS ARE EXACT. CONFIRMATION OF EXISTENCE AND EXACT LOCATION OF ALL SERVICES MUST BE OBTAINED FROM THE INDIVIDUAL UTILITIES BEFORE PROCEEDING WITH CONSTRUCTION.

1 Existing Conditions
E23-F1 Scale: 1:200



THE CITY OF WINNIPEG
Planning, Property and Development Department
Planning and Land Use Division
Unit 15 - 30 Fort Street, Winnipeg, MB, (R3C 4X5)

DESIGNED BY	LL	CHECKED BY	CH
DRAWN BY	LL	APPROVED BY	
HORIZ. SCALE	AS NOTED		
VERT. SCALE			
DATE	MAY 2017		
		MANAGER, PARK AND OPEN SPACES	DATE
		MANAGER, PLANNING AND LAND USE DIVISION	DATE

DRAWING TITLE	DRAWING NO.
Elva Fletcher Way	
Park Renovations	E23-F1
Existing Conditions and Removals	BID OPPORTUNITY NO.
SITE ADDRESS 775 Osborne St.	305-2017