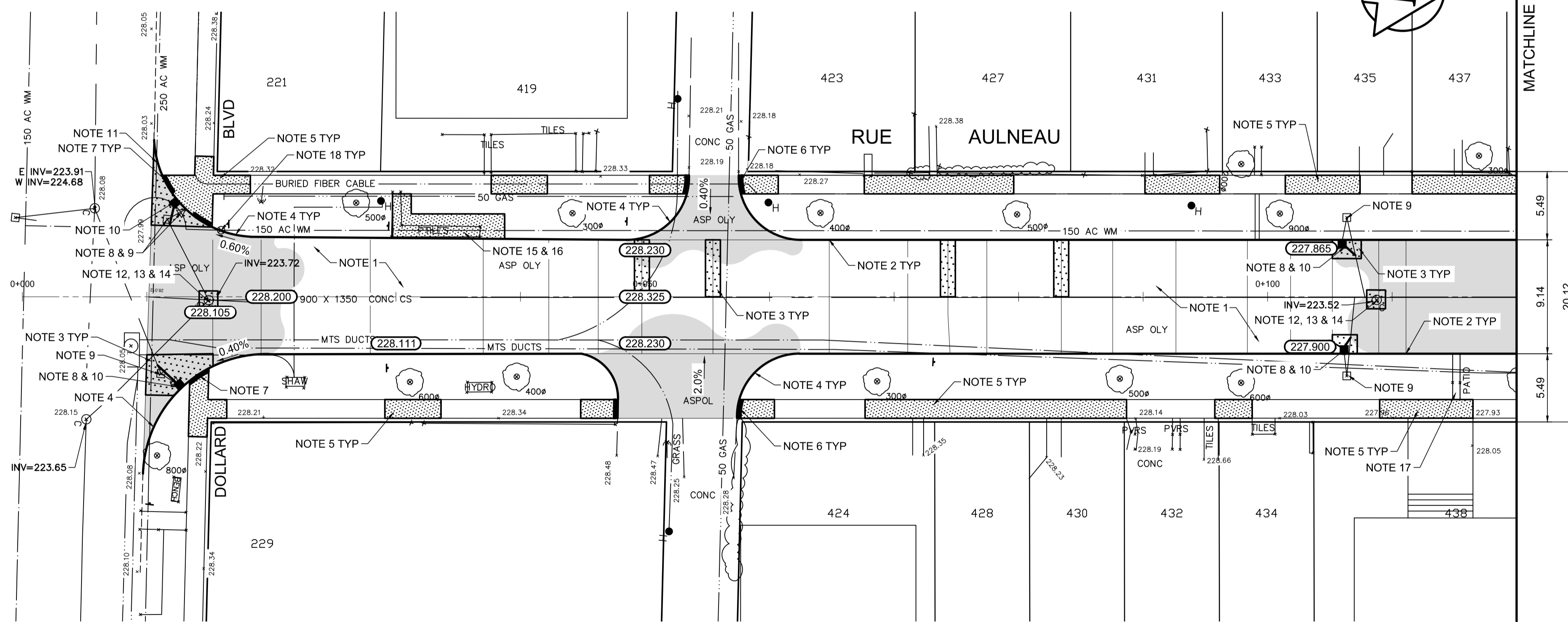


MATCHLINE 0+120



REFERENCE NOTES

- A. PAVEMENT DIMENSIONS ARE TO BACK OF CURB
- B. BASELINE IS CENTRE LINE RIGHT-OF-WAY
- C. PROPERTY LINES OBTAINED FROM CITY OF WINNIPEG L.B.I.S., AND NO SCALE FACTOR WAS APPLIED
- D. REFER TO AECOM FIELD BOOK NO. 4976

CONSTRUCTION NOTES

1. PLANE EXISTING ASPHALTIC PAVEMENT AND PLACE NEW ASPHALTIC PAVEMENT TYPE 1A (AVG THICKNESS 85mm)
2. RENEW EXISTING BARRIER CURB (100mm REVEAL HT. DOWELED)
3. REMOVE EXISTING CONCRETE PAVEMENT AND CONSTRUCT NEW 150mm REINFORCED CONCRETE PAVEMENT w/ ASPHALTIC OVERLAY
4. REMOVE EXISTING BARRIER CURB AND CONSTRUCT NEW CONCRETE MODIFIED BARRIER CURB (150mm REVEAL HT. DOWELED)
5. RENEW EXISTING 100mm CONCRETE SIDEWALK
6. CONSTRUCT CURB RAMP (10mm REVEAL HT. MONOLITHIC)
7. CONSTRUCT CURB RAMP (10mm REVEAL HT. INTEGRAL)
8. REMOVE EXISTING CATCHPIT AND ABANDON LEAD
9. REMOVE EXISTING CATCHBASIN
10. INSTALL NEW CATCHBASIN (SD-024) AND CONNECT TO EXISTING LEAD
11. CONSTRUCT NEW CONCRETE MODIFIED BARRIER CURB (150mm REVEAL HT. INTEGRAL)
12. ADJUST EXISTING MANHOLE/CATCHBASIN TO GRADE
13. REMOVE EXISTING FRAME AND COVER AND INSTALL NEW FRAME AND SOLID COVER (AP-006 & AP-007)
14. INSTALL NEW CAST IRON RISER RING
15. REMOVE EXISTING PRE-CAST SIDEWALK BLOCKS
16. CONSTRUCT NEW 100mm CONCRETE SIDEWALK
17. REMOVE AND RE-GRADE EXISTING PRE-CAST SIDEWALK BLOCKS
18. ADJUST EXISTING WATER VALVE TO GRADE



Certificate of Authorization

AECOM Canada Ltd.

No. 4671 Date: _____

METRIC

WHOLE NUMBERS INDICATE MILLIMETRES
DECIMALIZED NUMBERS INDICATE METRES

150 mm W.M.	WATERMAIN	150 mm W.M.	HYDRO	— X —	— C —	— PROFILE
300mm L.D.S.	LAND DRAINAGE SEWER	300mm L.D.S.	M.T.S.	— □ —	— □ —	WEST GUTTER
250mm W.W.S.	WASTEWATER SEWER	250mm W.W.S.	CONCRETE	— ○ —	— ○ —	EAST GUTTER
	MANHOLE		ASPHALT	— ◇ —	— ◇ —	N/W PROPERTY LINE
	CATCH BASIN		PROPERTY LINE	— ○ —	— ○ —	S/E PROPERTY LINE
	CATCH PIT		SURVEY BAR	— ⊕ —		
	JUNCTIONS		ELEVATION	— 235.750 —		
	CULVERT		TREE	— ⊕ —		
	GAS		SIDEWALK RAMP	— ▽ —		
			CONCRETE SIDEWALK	— ▽ —		
			FENCE	— ▽ —		
EXISTING	LEGEND - PLAN	PROPOSED	EXISTING	LEGEND - PLAN	PROPOSED	EXISTING
				LEGEND - PROFILE	PROPOSED	

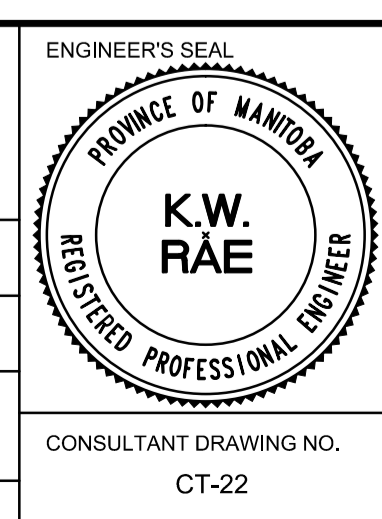
LOCATION APPROVED UNDERGROUND STRUCTURES

SUPV. U/G STRUCTURES COMMITTEE DATE

NOTE:
LOCATION OF UNDERGROUND STRUCTURES AS SHOWN ARE BASED ON THE BEST INFORMATION AVAILABLE. BUT NO GUARANTEE IS GIVEN THAT ALL EXISTING UTILITIES ARE SHOWN OR THAT THE GIVEN LOCATIONS ARE EXACT. CONFIRMATION OF EXISTENCE AND EXACT LOCATION OF ALL SERVICES MUST BE OBTAINED FROM THE INDIVIDUAL UTILITIES BEFORE PROCEEDING WITH CONSTRUCTION.

B.M. 27-034	85R431 - W. side Rue Aulneau @ Hamel Ave., Tbt. on top of 0.05 m dia x 2.4 m iron pipe, 2.1 m E. of ELEV. 230.472			
NO.	REVISIONS	DATE	BY	DATE
0	ISSUED FOR TENDER	05/10/17	BC	
A	ISSUED FOR REVIEW	05/01/17	BC	

AECOM		DESIGNED BY	SS	CHECKED BY	TDW/KWR
		DRAWN BY	BC/PB	APPROVED BY	
		HOR. SCALE:	1:250	RELEASED FOR CONSTRUCTION BY:	
		VERTICAL:	1:10	DATE	



THE CITY OF WINNIPEG
PUBLIC WORKS DEPARTMENT
ENGINEERING DIVISION

2017 LOCAL STREET RENEWAL PROGRAM

RUE AULNEAU - DOLLARD BLVD TO HAMEL AVENUE
PAVEMENT REHABILITATION
DOLLARD BLVD TO STATION 0+120

CITY DRAWING NUMBER
SHEET 22 OF 27

CONSULTANT DRAWING NO.
CT-22