

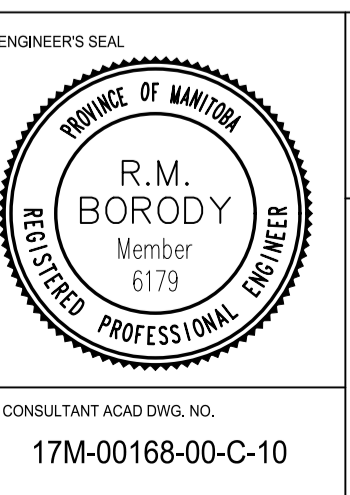
NOTE:
These design documents are prepared solely for the use by the party with whom the design professional has entered into a contract and there are no representations of any kind made by the design professional to any party with whom the design professional has not entered into a contract.

EXISTING		PROPOSED		EXISTING		PROPOSED		EXISTING		PROPOSED	
(Symbol)	ANCHOR	(Symbol)	CIVIC ADDRESS	(Symbol)	ANCHOR	(Symbol)	CIVIC ADDRESS	(Symbol)	ANCHOR	(Symbol)	CIVIC ADDRESS
(Symbol)	WATER MAIN	(Symbol)	#111	(Symbol)	HYDRO POLE & LIGHT STANDARD	(Symbol)	HYDRO POLE & LIGHT STANDARD	(Symbol)	HYDRO POLE & LIGHT STANDARD	(Symbol)	HYDRO POLE & LIGHT STANDARD
(Symbol)	LAND DRAINAGE SEWER	(Symbol)	IRON BAR	(Symbol)	LIGHT STANDARD	(Symbol)	LIGHT STANDARD	(Symbol)	LIGHT STANDARD	(Symbol)	LIGHT STANDARD
(Symbol)	WASTE WATER SEWER	(Symbol)	HYDRO POLE	(Symbol)	M.T.S.	(Symbol)	M.T.S.	(Symbol)	M.T.S.	(Symbol)	M.T.S.
(Symbol)	HYDRO	(Symbol)	HYDRO POLE	(Symbol)	GAS	(Symbol)	GAS	(Symbol)	GAS	(Symbol)	GAS
(Symbol)	M.T.S.	(Symbol)	TRAFFIC SIGNAL	(Symbol)	SIGNALS	(Symbol)	SIGNALS	(Symbol)	SIGNALS	(Symbol)	SIGNALS
(Symbol)	GAS	(Symbol)	DETECTABLE WARNING TILE	(Symbol)	MANHOLE	(Symbol)	MANHOLE	(Symbol)	MANHOLE	(Symbol)	MANHOLE
(Symbol)	ANCHOR	(Symbol)	CURB RAMP	(Symbol)	CATCH BASIN	(Symbol)	CATCH BASIN	(Symbol)	CATCH BASIN	(Symbol)	CATCH BASIN
(Symbol)	CIVIC ADDRESS	(Symbol)	EDGE OF SIDEWALK	(Symbol)	CURB INLET	(Symbol)	CURB INLET	(Symbol)	CURB INLET	(Symbol)	CURB INLET
(Symbol)	HYDRO POLE & LIGHT STANDARD	(Symbol)	PROPERTY LINE	(Symbol)	UTILITIES ADJUSTED	(Symbol)	UTILITIES ADJUSTED	(Symbol)	UTILITIES ADJUSTED	(Symbol)	UTILITIES ADJUSTED
(Symbol)	LIGHT STANDARD	(Symbol)	FENCE	(Symbol)	PLUG	(Symbol)	PLUG	(Symbol)	PLUG	(Symbol)	PLUG
(Symbol)	M.T.S.	(Symbol)	EDGE OF ASPHALT	(Symbol)	HYDRANT	(Symbol)	HYDRANT	(Symbol)	HYDRANT	(Symbol)	HYDRANT
(Symbol)	GAS	(Symbol)	BARRIER CURB	(Symbol)	VALVE	(Symbol)	VALVE	(Symbol)	VALVE	(Symbol)	VALVE
(Symbol)	TRAFFIC SIGNAL	(Symbol)	MODIFIED BARRIER CURB	(Symbol)	CURB STOP	(Symbol)	CURB STOP	(Symbol)	CURB STOP	(Symbol)	CURB STOP
(Symbol)	DETECTABLE WARNING TILE	(Symbol)	SIDEWALK REPAIRS	(Symbol)	GROUND GRADE	(Symbol)	GROUND GRADE	(Symbol)	GROUND GRADE	(Symbol)	GROUND GRADE
(Symbol)	MANHOLE	(Symbol)	CONCRETE SLAB REPAIR	(Symbol)	PAVEMENT GRADE	(Symbol)	PAVEMENT GRADE	(Symbol)	PAVEMENT GRADE	(Symbol)	PAVEMENT GRADE
(Symbol)	CATCH BASIN	(Symbol)	MILLED SURFACE	(Symbol)	LOT GRADE	(Symbol)	LOT GRADE	(Symbol)	LOT GRADE	(Symbol)	LOT GRADE
(Symbol)	CURB INLET	(Symbol)	ASPHALT	(Symbol)	EXISTING LEGEND-PLAN	(Symbol)	EXISTING LEGEND-PLAN	(Symbol)	EXISTING LEGEND-PLAN	(Symbol)	EXISTING LEGEND-PLAN
(Symbol)	UTILITIES ADJUSTED	(Symbol)	ROADWAY CENTRE LINE	(Symbol)	PROPOSED LEGEND-PLAN	(Symbol)	PROPOSED LEGEND-PLAN	(Symbol)	PROPOSED LEGEND-PLAN	(Symbol)	PROPOSED LEGEND-PLAN
(Symbol)	PLUG	(Symbol)	NORTH GUTTER	(Symbol)	EXISTING LEGEND-PROFILE	(Symbol)	EXISTING LEGEND-PROFILE	(Symbol)	EXISTING LEGEND-PROFILE	(Symbol)	EXISTING LEGEND-PROFILE
(Symbol)	HYDRANT	(Symbol)	SOUTH GUTTER	(Symbol)	PROPOSED LEGEND-PROFILE	(Symbol)	PROPOSED LEGEND-PROFILE	(Symbol)	PROPOSED LEGEND-PROFILE	(Symbol)	PROPOSED LEGEND-PROFILE
(Symbol)	VALVE	(Symbol)	NORTH SIDEWALK	(Symbol)		(Symbol)		(Symbol)		(Symbol)	
(Symbol)	CURB STOP	(Symbol)	SOUTH SIDEWALK	(Symbol)		(Symbol)		(Symbol)		(Symbol)	
(Symbol)	GROUND GRADE	(Symbol)	SOUTH FRONT OF SIDEWALK	(Symbol)		(Symbol)		(Symbol)		(Symbol)	
(Symbol)	PAVEMENT GRADE	(Symbol)	NORTH FRONT OF SIDEWALK	(Symbol)		(Symbol)		(Symbol)		(Symbol)	
(Symbol)	LOT GRADE	(Symbol)		(Symbol)		(Symbol)		(Symbol)		(Symbol)	

LOCATIONS APPROVED UNDERGROUND STRUCTURES	
SIGNED BY:	DATE:
SUPV UG STRUCTURES	
LOCATION OF UNDERGROUND STRUCTURES AS SHOWN ARE BASED ON THE BEST INFORMATION AVAILABLE BUT NO GUARANTEE IS GIVEN THAT ALL EXISTING UTILITIES ARE SHOWN OR THAT THE GIVEN LOCATIONS ARE EXACT CONFIRMATION OF EXISTANCE AND EXACT LOCATION OF ALL SERVICES MUST BE OBTAINED FROM THE INDIVIDUAL UTILITIES BEFORE PROCEEDING	

BENCHMARK LOCATION	
G.B.M. - ELEV. 232.351	LOCATED ON TOP OF TOP NUT ON HYDRANT AT SOUTHEAST CORNER OF ROSLYN ROAD AND BRYCE STREET

MMM GROUP	
DESIGNED BY: SG	CHECKED BY: SG/TR
DRAWN BY: LT	APPROVED BY: RMB
C ISSUED FOR TENDER	02.05.17 SG
B ISSUED FOR UNDERGROUND STRUCTURES REVIEW	17.04.17 SG
A ISSUED FOR CLIENT REVIEW	23.03.17 SG
NO. REVISIONS	DATE BY
	02 MAR 2017



FOR TENDER PURPOSES ONLY

METRIC
WHOLE NUMBERS INDICATE MILLIMETRES
DECIMALIZED NUMBERS INDICATE METRES

APGM
Certificate of Authorization
MMM Group Limited
No. 4531

THE CITY OF WINNIPEG
PUBLIC WORKS DEPARTMENT
ENGINEERING DIVISION

2017 LOCAL STREET RENEWAL PROGRAM
ROSLYN ROAD
OSBORNE STREET TO EAST END
PAVEMENT REHABILITATION
STA. 2+40 TO STA. 3+80

CITY DRAWING NUMBER
SHEET 10 OF 19
BID NO. 321-2017

- NOTES:
- ALL WORK AND MATERIALS TO BE IN ACCORDANCE WITH THE LATEST REVISION OF THE CITY OF WINNIPEG STANDARD CONSTRUCTION SPECIFICATIONS.
 - CONTRACTOR TO CONFIRM THE LOCATION OF ALL UTILITIES/SERVICES IN THE FIELD PRIOR TO CONSTRUCTION.
 - ALL ROADWAY DIMENSIONS SHOWN ARE TO BACK OF CURB.
 - ADD 200.00 TO ABBREVIATED ELEVATIONS TO OBTAIN GEODETIC ELEVATION.
 - PAVEMENT REPAIRS SHOWN ARE ONLY A REPRESENTATIVE APPROXIMATION OF THE TENDERED QUANTITIES. RENEW CURB AND SIDEWALK AS IDENTIFIED BY CONTRACT ADMINISTRATOR.
 - ALL PRIVATE WALKWAYS TO BE ADJUSTED TO NEW SIDEWALK OR TOP OF CURB ELEVATION, AS REQUIRED.
 - MODIFIED BARRIER CURB TO BE CONSTRUCTED AT ALL INTERSECTION RADII AND BACK LANE RADII.
 - CONTRACTORS TO TAKE PRECAUTIONARY STEPS TO PROTECT EXISTING TREES WITHIN THE LIMITS OF CONSTRUCTION FROM DAMAGE FROM CONSTRUCTION ACTIVITIES AS OUTLINED IN THE SPECIFICATIONS.
 - LAMP STANDARDS, HYDRO POLES, AND ANCHORS THAT REQUIRE TEMPORARY SUPPORT, REMOVAL OR REPLACEMENT, TO BE DONE SO AT THE EXPENSE OF THE CONTRACTOR AS NECESSARY.
 - ALL BOULEVARDS TO BE SODDED UNLESS OTHERWISE NOTED.
 - TRAFFIC SERVICES TO PAINT BICYCLE SHARROWS.

May 05, 2017 - 2:45pm
 P:\2017\17M-00168-00 - Local Streets 17-R-04\MMW Drawings\Construction Drawings\Rehabilitation\17M-00168-00 C09 - C11 Roslyn Road 2017.05.02.dwg - tab.C10