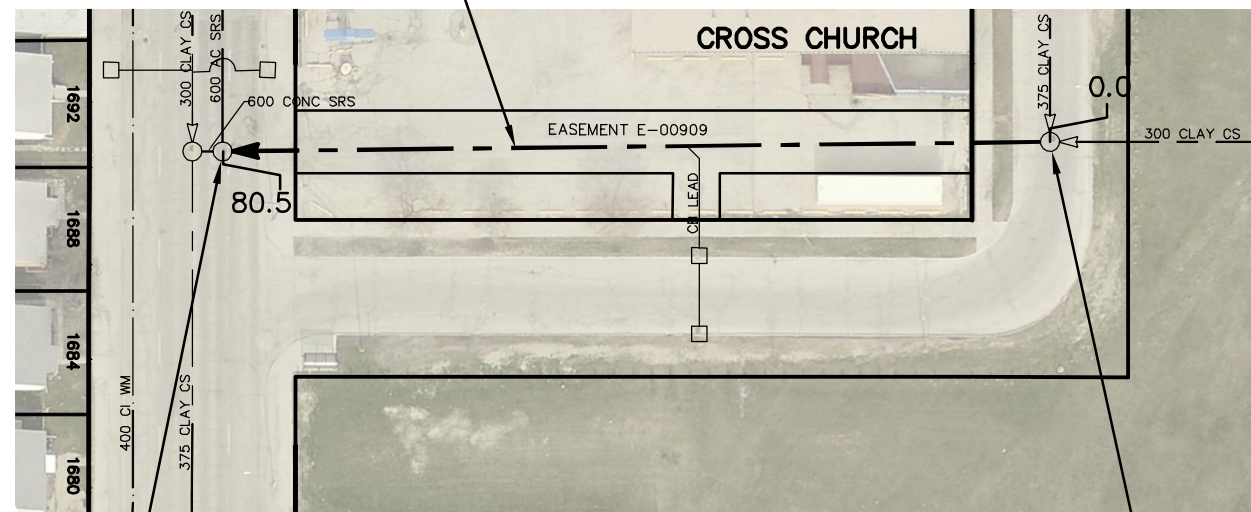


EASEMENT (WEST OF WIENS STREET)

80.5 OF 375 CLAY CS TO BE LINED
FULLY DETERIORATED
S-MA20012535



GALLAGHER AV W

S-MH20011446
RIM 232.48
INV N 228.90
INV S 228.83
INV W 228.83

LOGAN AVE

WIENS ST

S-MH20011489
RIM 232.21
INV N 229.15
INV S 229.15
INV W 229.15

SEWER JUNCTION INFORMATION FROM SEWER VIDEO INSPECTION		
SEWER ID S-MA20012535		
DISTANCE FROM MH ID S-MH20011489		
DISTANCE	DIAMETER	CLOCK
20.6	150	2
36.4	150	10
36.9	150	10
37.8	150	2

WARNING

IF POWER EQUIPMENT OR EXPLOSIVES ARE TO BE USED FOR EXCAVATION ON THIS PROJECT THE CONTRACTOR MUST:

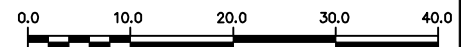
- 1) NOTIFY THE GAS COMPANY OF THE PROPOSED LOCATION OF EXCAVATION.
- 2) TAKE PRECAUTION TO AVOID DAMAGE TO GAS COMPANY INSTALLATIONS.

SEE PROVINCIAL REGULATION 210/72 FOR DETAILS

FOR INDEX SEE
11551

METRIC

WHOLE NUMBERS INDICATE MILLIMETRES
DECIMALIZED NUMBERS INDICATE METRES



LOCATION APPROVED
UNDERGROUND STRUCTURES

B.M.
ELEV.

SUPV. U/G STRUCTURES COMMITTEE DATE

NOTE:

LOCATION OF UNDERGROUND STRUCTURES AS SHOWN ARE BASED ON THE BEST INFORMATION AVAILABLE BUT NO GUARANTEE IS GIVEN THAT ALL EXISTING UTILITIES ARE SHOWN OR THAT THE GIVEN LOCATIONS ARE EXACT. CONFIRMATION OF EXISTENCE AND EXACT LOCATION OF ALL SERVICES MUST BE OBTAINED FROM THE INDIVIDUAL UTILITIES BEFORE PROCEEDING WITH CONSTRUCTION.

NO.	REVISIONS	DATE	BY

DESIGNED BY	SC	CHECKED BY	SC
DRAWN BY	RJ	APPROVED BY	KZ
SCALE:	1:750	RELEASED FOR CONSTRUCTION	K. ZUREK
HORIZONTAL		DATE	2017 06 06
VERTICAL		DATE	2017 07 04

PLOT DATE: 2017 07 04

ENGINEER'S SEAL

ORIGINAL
SIGNED BY
S.R.J.
COURNOYER
17/06/05

CONSULTANT DRAWING NUMBER

BID OPPORTUNITY: 343-2017
CONTRACT NUMBER: 5



THE CITY OF WINNIPEG
WATER AND WASTE DEPARTMENT
ENGINEERING DIVISION

2016 SEWER MAIN RENEWALS
BY CIPP LINING
EASEMENT (WEST OF WIENS STREET)
MH AT GALLAGHER AVENUE WEST TO
MH AT LOGAN AVENUE (N OF Q)

SHEET 28 OF 79

CITY DRAWING NUMBER

11577

FILE PATH: R:\DRAWINGS\SEWER\2016 RENEWALS\Contract 5\Construction Dwg\
FILE NAME: EASEMENT_S-MA20012535.dwg