

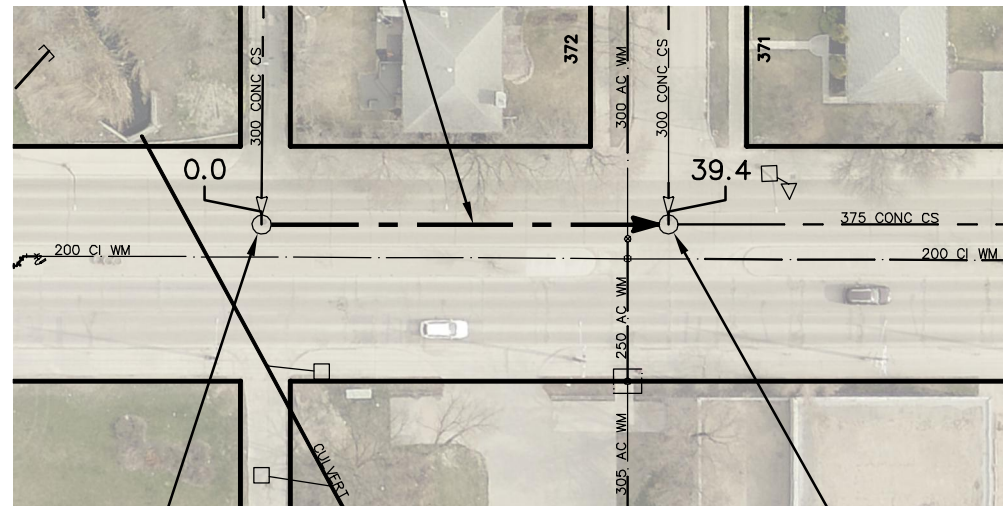


NESS AVENUE

39.4 OF 300 CONC CS TO BE LINED
PARTIALLY DETERIORATED
S-MA20007938

LYLE ST

LINWOOD ST



S-MH20007279
RIM 232.92
INV N 229.52
INV E 229.52

S-MH20007280
RIM 233.58
INV N 229.25
INV E 229.26
INV W 229.26

SEWER JUNCTION INFORMATION FROM SEWER VIDEO INSPECTION SEWER ID S-MA20007938		
DISTANCE FROM MH ID S-MH20007279		
DISTANCE	DIAMETER	CLOCK
31.7	100	1

WARNING

IF POWER EQUIPMENT OR EXPLOSIVES ARE TO BE USED FOR EXCAVATION ON THIS PROJECT THE CONTRACTOR MUST:

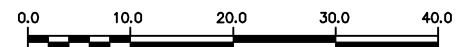
- 1) NOTIFY THE GAS COMPANY OF THE PROPOSED LOCATION OF EXCAVATION.
- 2) TAKE PRECAUTION TO AVOID DAMAGE TO GAS COMPANY INSTALLATIONS.

SEE PROVINCIAL REGULATION 210/72 FOR DETAILS

FOR INDEX SEE
11551

METRIC

WHOLE NUMBERS INDICATE MILLIMETRES
DECIMALIZED NUMBERS INDICATE METRES



LOCATION APPROVED
UNDERGROUND STRUCTURES

SUPV. U/G STRUCTURES COMMITTEE DATE

NOTE:

LOCATION OF UNDERGROUND STRUCTURES AS SHOWN ARE BASED ON THE BEST INFORMATION AVAILABLE BUT NO GUARANTEE IS GIVEN THAT ALL EXISTING UTILITIES ARE SHOWN OR THAT THE GIVEN LOCATIONS ARE EXACT. CONFIRMATION OF EXISTENCE AND EXACT LOCATION OF ALL SERVICES MUST BE OBTAINED FROM THE INDIVIDUAL UTILITIES BEFORE PROCEEDING WITH CONSTRUCTION.

B.M.
ELEV.

NO.	REVISIONS	DATE	BY

DESIGNED BY	SC	CHECKED BY	SC
DRAWN BY	RJ	APPROVED BY	KZ
SCALE:	1:750	RELEASED FOR CONSTRUCTION	K. ZUREK
HORIZONTAL			
VERTICAL			
DATE	2017 07 04	DATE	2017 06 06

ENGINEER'S SEAL

ORIGINAL
SIGNED BY
S.R.J.
COURNOYER
17/06/05

CONSULTANT DRAWING NUMBER

BID OPPORTUNITY: 343-2017
CONTRACT NUMBER: 5



THE CITY OF WINNIPEG
WATER AND WASTE DEPARTMENT
ENGINEERING DIVISION

2016 SEWER MAIN RENEWALS
BY CIPP LINING

NESS AVENUE

1ST MH E OF LINWOOD STREET TO
MH AT LYLE STREET

SHEET 45 OF 79

CITY DRAWING NUMBER

11594

FILE PATH: R:\DRAWINGS\SEWER\2016 RENEWALS\Contract 5\Construction Dwg\
FILE NAME: NESS_S-MA20007938.dwg

PLOT DATE: 2017 07 04