

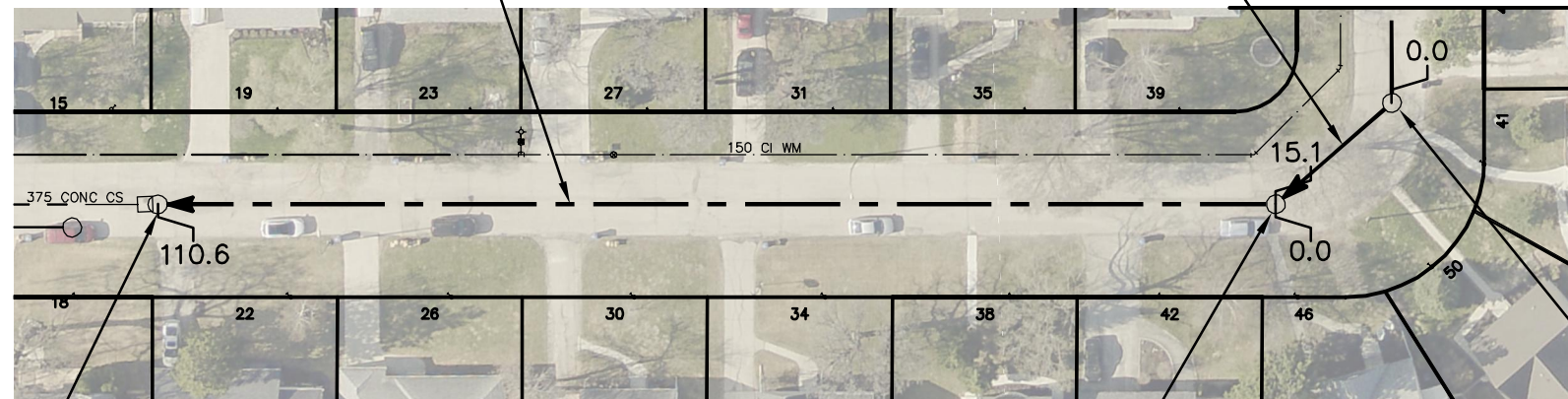


# ROWAND AVENUE

110.6 OF 300 CONC CS TO BE LINED  
PARTIALLY DETERIORATED  
S-MA20005161

15.1 OF 250 CONC CS TO BE LINED  
FULLY DETERIORATED  
S-MA20005163

FOR CONTINUATION  
SEE DWG 11607



MOUNT ROYAL RD

S-MH20004712  
RIM 235.93  
INV E 232.79  
INV W 232.79

S-MH20004714  
RIM 236.28  
INV E 233.21  
INV W 233.21

S-MH20004715  
RIM 236.11  
INV N 233.24  
INV W 233.24

SEWER JUNCTION INFORMATION FROM SEWER VIDEO INSPECTION SEWER ID S-MA20005161		
DISTANCE FROM MH ID S-MH20004714		
DISTANCE	DIAMETER	CLOCK
2.6	150	10
10.8	150	2
11.7	150	10
25.3	150	2
26.2	150	10
43.8	150	2
44.6	150	10
62.2	150	2
63.0	150	10
75.3	150	2
80.6	150	2
81.2	150	1
81.6	150	10
99.0	150	2
99.8	150	10

SEWER JUNCTION INFORMATION FROM SEWER VIDEO INSPECTION SEWER ID S-MA20005163		
DISTANCE FROM MH ID S-MH20004715		
DISTANCE	DIAMETER	CLOCK
3.2	150	10
9.3	150	10

FOR INDEX SEE  
11552

### WARNING

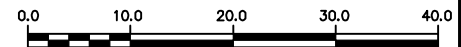
IF POWER EQUIPMENT OR EXPLOSIVES  
ARE TO BE USED FOR EXCAVATION ON  
THIS PROJECT THE CONTRACTOR MUST:

- 1) NOTIFY THE GAS COMPANY OF THE  
PROPOSED LOCATION OF EXCAVATION.
- 2) TAKE PRECAUTION TO AVOID DAMAGE  
TO GAS COMPANY INSTALLATIONS.

SEE PROVINCIAL REGULATION 210/72 FOR DETAILS

### METRIC

WHOLE NUMBERS INDICATE MILLIMETRES  
DECIMALIZED NUMBERS INDICATE METRES



LOCATION APPROVED  
UNDERGROUND STRUCTURES

SUPV. U/G STRUCTURES COMMITTEE DATE

NOTE:

LOCATION OF UNDERGROUND STRUCTURES AS  
SHOWN ARE BASED ON THE BEST INFORMATION  
AVAILABLE BUT NO GUARANTEE IS GIVEN THAT ALL  
EXISTING UTILITIES ARE SHOWN OR THAT THE GIVEN  
LOCATIONS ARE EXACT. CONFIRMATION OF  
EXISTENCE AND EXACT LOCATION OF ALL  
SERVICES MUST BE OBTAINED FROM THE INDIVIDUAL  
UTILITIES BEFORE PROCEEDING WITH CONSTRUCTION.

B.M.  
ELEV.

NO.	REVISIONS	DATE	BY

DESIGNED BY	SC	CHECKED BY	SC
DRAWN BY	RJ	APPROVED BY	KZ
SCALE:	1:750	RELEASED FOR CONSTRUCTION	K. ZUREK
HORIZONTAL		DATE	2017 06 06
VERTICAL		DATE	2017 07 04

PLOT DATE: 2017 07 04

ENGINEER'S SEAL

ORIGINAL  
SIGNED BY  
S.R.J.  
COURNOYER  
17/06/05

CONSULTANT DRAWING NUMBER

BID OPPORTUNITY: 343-2017  
CONTRACT NUMBER: 5



**THE CITY OF WINNIPEG**  
WATER AND WASTE DEPARTMENT  
ENGINEERING DIVISION

2016 SEWER MAIN RENEWALS  
BY CIPP LINING  
**ROWAND AVENUE (S. LEG)**  
1ST MH E OF MOUNT ROYAL ROAD TO  
3RD MH E OF MOUNT ROYAL ROAD

SHEET 59 OF 79

CITY DRAWING NUMBER

11608

FILE PATH: R:\DRAWINGS\SEWER\2016 RENEWALS\Contract 5\Construction Dwg\  
FILE NAME: ROWAND AVENUE (S.LEG).dwg