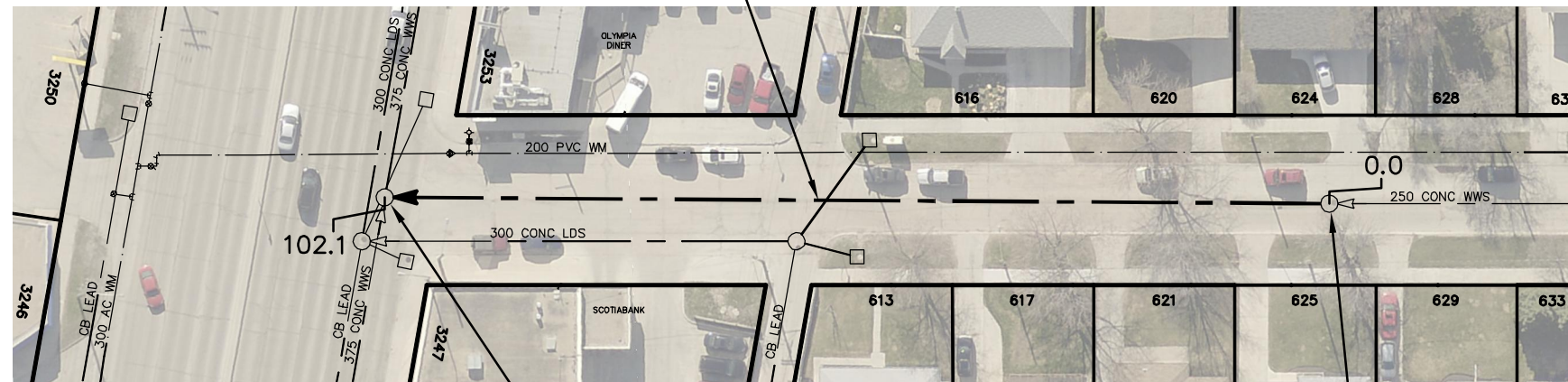




VIMY ROAD

**102.1 OF 250 CONC WWS TO BE LINED
FULLY DETERIORATED
S-MA20004357**



PORTAGE AVE

S-MH20004005
RIM 236.49
INV N 232.18
INV E 229.27
INV W 229.27

S-MH20004016
RIM 236.32
INV N 232.55
INV S 232.55

SEWER JUNCTION INFORMATION FROM SEWER VIDEO INSPECTION SEWER ID S-MA20004357		
DISTANCE FROM MH ID S-MH20004016		
DISTANCE	DIAMETER	CLOCK
5.7	150	11
6.2	200	12
16.5	150	10
18.3	150	1
29.0	200	10
42.7	200	1
48.0	150	11
74.0	150	1
87.2	150	10
101.2	250	6

WARNING

IF POWER EQUIPMENT OR EXPLOSIVES ARE TO BE USED FOR EXCAVATION ON THIS PROJECT THE CONTRACTOR MUST:

- 1) NOTIFY THE GAS COMPANY OF THE PROPOSED LOCATION OF EXCAVATION.
- 2) TAKE PRECAUTION TO AVOID DAMAGE TO GAS COMPANY INSTALLATIONS.

SEE PROVINCIAL REGULATION 210/72 FOR DETAILS

**FOR INDEX SEE
11552**

METRIC

WHOLE NUMBERS INDICATE MILLIMETRES
DECIMALIZED NUMBERS INDICATE METRES



LOCATION APPROVED
UNDERGROUND STRUCTURES

SUPV. U/G STRUCTURES COMMITTEE DATE

NOTE:

LOCATION OF UNDERGROUND STRUCTURES AS SHOWN ARE BASED ON THE BEST INFORMATION AVAILABLE BUT NO GUARANTEE IS GIVEN THAT ALL EXISTING UTILITIES ARE SHOWN OR THAT THE GIVEN LOCATIONS ARE EXACT. CONFIRMATION OF EXISTENCE AND EXACT LOCATION OF ALL SERVICES MUST BE OBTAINED FROM THE INDIVIDUAL UTILITIES BEFORE PROCEEDING WITH CONSTRUCTION.

B.M.
ELEV.

NO.	REVISIONS	DATE	BY

DESIGNED BY	SC	CHECKED BY	SC
DRAWN BY	RJ	APPROVED BY	KZ
SCALE:	1:750	RELEASED FOR CONSTRUCTION	K. ZUREK
HORIZONTAL			
VERTICAL			
DATE	2017 07 04	DATE	2017 06 06
PLOT DATE:	2017 07 04		

ENGINEER'S SEAL

**ORIGINAL
SIGNED BY
S.R.J.
COURNOYER
17/06/05**

CONSULTANT DRAWING NUMBER

BID OPPORTUNITY: 343-2017
CONTRACT NUMBER: 5



THE CITY OF WINNIPEG
WATER AND WASTE DEPARTMENT
ENGINEERING DIVISION

2016 SEWER MAIN RENEWALS
BY CIPP LINING
VIMY ROAD

1ST MH N OF PORTAGE AVENUE TO
MH @ PORTAGE AVENUE

SHEET 71 OF 79

CITY DRAWING NUMBER

11620

FILE PATH: R:\DRAWINGS\SEWER\2016 RENEWALS\Contract 5\Construction Dwg\
FILE NAME: VIMY_S-MA20004357.dwg