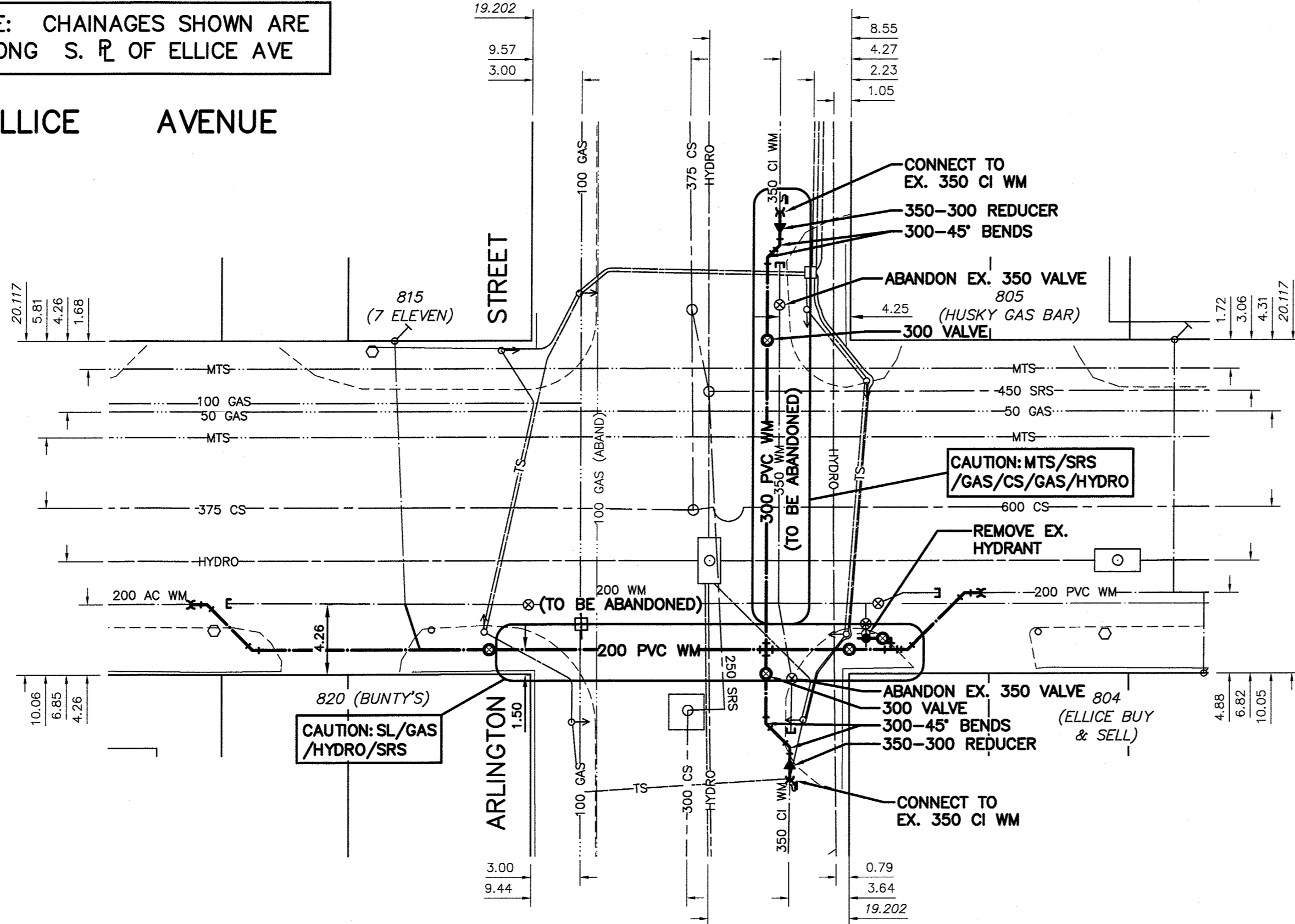


NOTE: CHAINAGES SHOWN ARE ALONG S. \bar{L} OF ELLICE AVE

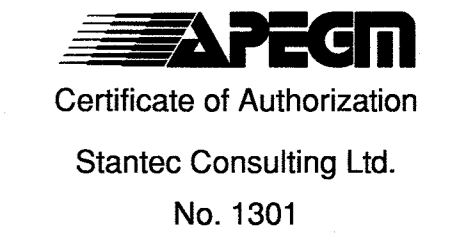
ELLICE AVENUE



WATER SERVICE INFORMATION

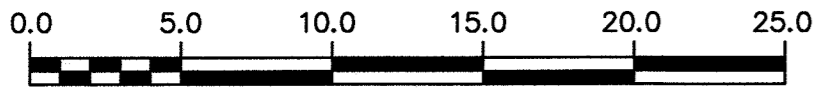
ADDRESS	SIZE (mm)	SIZE (mm)	SHORT & LONG MEASUREMENT	CORP. LOCATION	REMARKS
	MATERIAL (STREET)	MATERIAL (PROP.)			
815 ELLICE AVENUE COMMERCIAL	-	-	-	-	RECONNECT SERVICE

* SERVICES TO BE RENEWED TO P/L. ALL OTHERS TO BE RECONNECTED



NOTE: ALL VALVES TO BE INSTALLED COUNTERCLOCKWISE TO CLOSE

METRIC
WHOLE NUMBERS INDICATE MILLIMETRES
DECIMALIZED NUMBERS INDICATE METRES



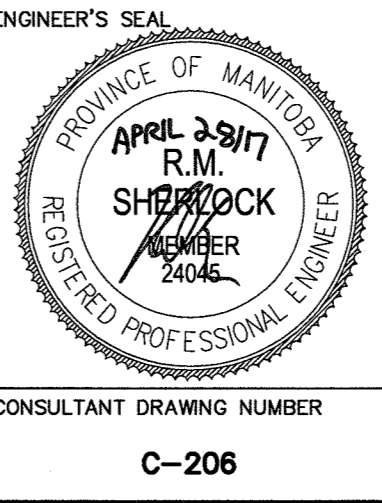
WARNING
IF POWER EQUIPMENT OR EXPLOSIVES ARE TO BE USED FOR EXCAVATION ON THIS PROJECT THE CONTRACTOR MUST:
1) NOTIFY THE GAS COMPANY OF THE PROPOSED LOCATION OF EXCAVATION.
2) TAKE PRECAUTION TO AVOID DAMAGE TO GAS COMPANY INSTALLATIONS.
SEE PROVINCIAL REGULATION 21072 FOR DETAILS

LOCATION APPROVED UNDERGROUND STRUCTURES
SUPV. U/G STRUCTURES COMMITTEE DATE
NOTE:
LOCATION OF UNDERGROUND STRUCTURES AS SHOWN ARE BASED ON THE BEST INFORMATION AVAILABLE BUT NO GUARANTEE IS GIVEN THAT ALL EXISTING UTILITIES ARE SHOWN OR THAT THE GIVEN LOCATIONS ARE EXACT. CONFIRMATION OF EXISTENCE AND EXACT LOCATION OF ALL UTILITIES MUST BE OBTAINED FROM THE INDIVIDUAL UTILITIES BEFORE PROCEEDING WITH CONSTRUCTION.

B.M. 37-33 ELEV. 233.716m	N.W. Cor. St. Matthews Ave. & Dominion St., Tblt. in S. Syndall stone foundation of Minto Armoury, 0.7m		
02	ISSUED FOR TENDER	2017.04.28	RS
01	ISSUED FOR REVIEW	2017.04.18	RS
NO.	REVISIONS	DATE	BY



DESIGNED BY	RS	CHECKED BY	WB
DRAWN BY	KR	APPROVED BY	RS
SCALE:		RELEASED FOR CONSTRUCTION	
HORIZONTAL	1:250	DATE	2017 03 22
VERTICAL	1:50	DATE	2017 04 27
PLOT DATE: 2017 04 27			



THE CITY OF WINNIPEG
WATER AND WASTE DEPARTMENT
ENGINEERING DIVISION

2017 WATERMAIN RENEWALS
CONTRACT 10
ELLICE AVENUE
ARLINGTON INTERSECTION

SHEET 8 OF 17
CITY DRAWING NUMBER
D-14664

CONSULTANT DRAWING NUMBER
C-206