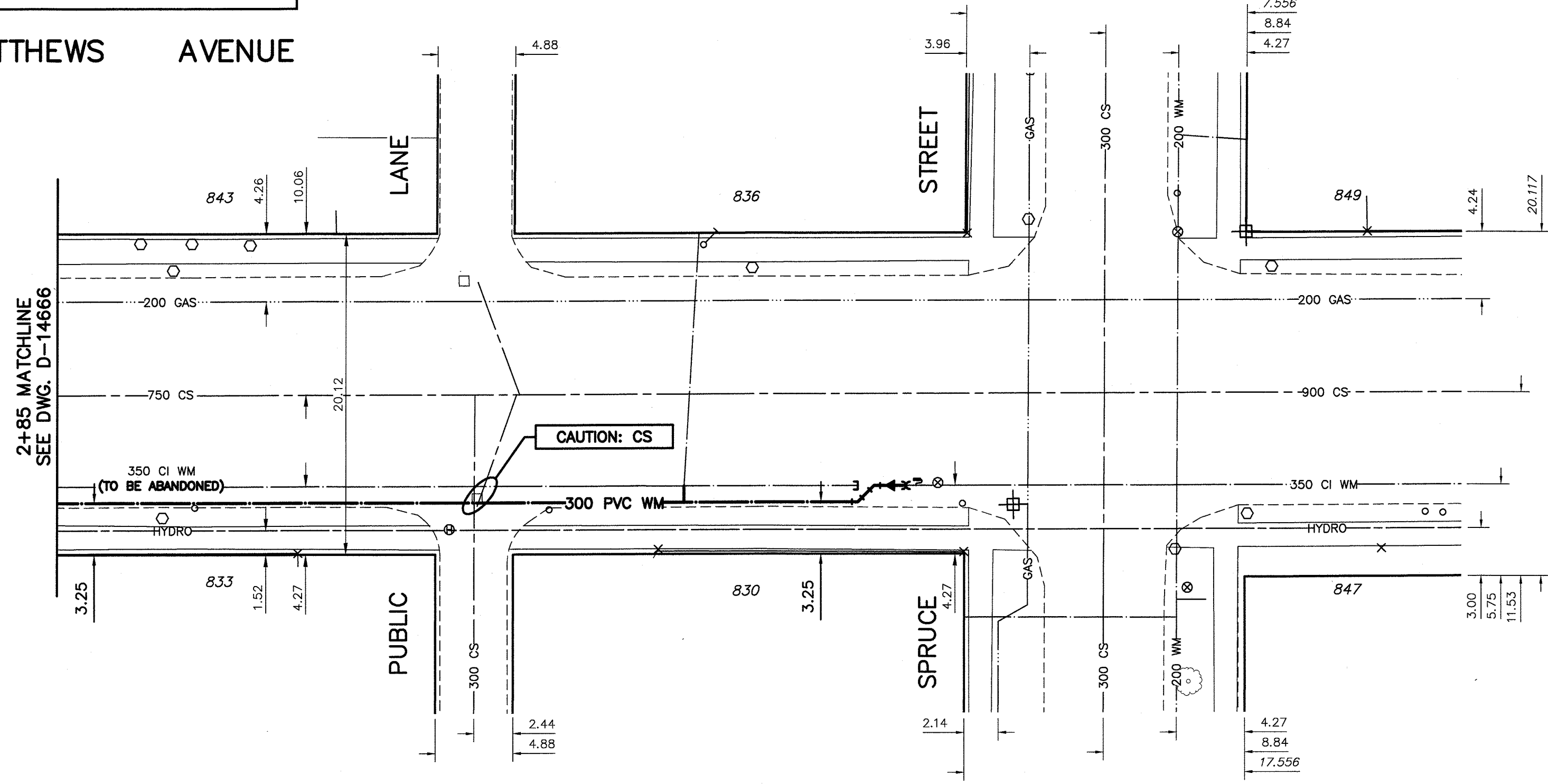


NOTE: CHAINAGES SHOWN ARE ALONG S. R. OF ST. MATTHEWS AVE

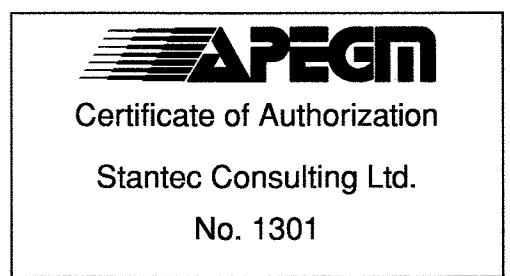
ST. MATTHEWS AVENUE



WATER SERVICE INFORMATION

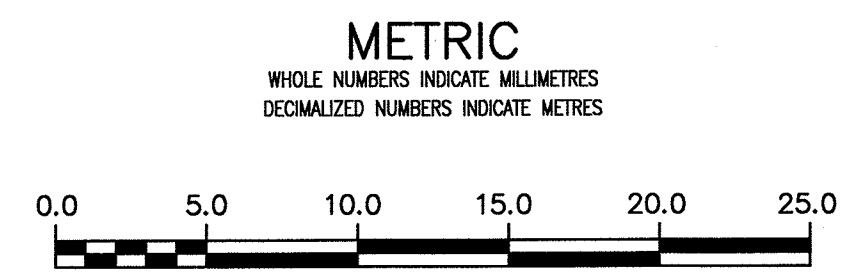
ADDRESS	SIZE (mm) MATERIAL (STREET)	SIZE (mm) MATERIAL (PROP.)	SHORT & LONG MEASUREMENT	CORP. LOCATION	REMARKS
836 SPRUCE ST. RESIDENTIAL	-	-	-	-	RECONNECT SERVICE

* SERVICES TO BE RENEWED TO P/L. ALL OTHERS TO BE RECONNECTED



APEGM
Certificate of Authorization
Stantec Consulting Ltd.
No. 1301

NOTE: ALL VALVES TO BE INSTALLED COUNTERCLOCKWISE TO CLOSE



WARNING
IF POWER EQUIPMENT OR EXPLOSIVES ARE TO BE USED FOR EXCAVATION ON THIS PROJECT THE CONTRACTOR MUST:
1) NOTIFY THE GAS COMPANY OF THE PROPOSED LOCATION OF EXCAVATION.
2) TAKE PRECAUTION TO AVOID DAMAGE TO GAS COMPANY INSTALLATIONS.
SEE PROVINCIAL REGULATION 210/72 FOR DETAILS

LOCATION APPROVED UNDERGROUND STRUCTURES
SUPV. U/G STRUCTURES COMMITTEE DATE
NOTE:
LOCATION OF UNDERGROUND STRUCTURES AS SHOWN ARE BASED ON THE BEST INFORMATION AVAILABLE BUT NO GUARANTEE IS GIVEN THAT ALL EXISTING UTILITIES ARE SHOWN OR THAT THE GIVEN LOCATIONS ARE EXACT. CONFIRMATION OF EXISTENCE AND EXACT LOCATION OF ALL UTILITIES MUST BE OBTAINED FROM THE INDIVIDUAL UTILITIES BEFORE PROCEEDING WITH CONSTRUCTION.

B.M. 37-3 ELEV. 233.449m Bolt in 7.3m Conc. pile on St Matthews & Strathcona

NO.	REVISIONS	DATE	BY
02	ISSUED FOR TENDER	2017.04.28	RS
01	ISSUED FOR REVIEW	2017.04.18	RS



DESIGNED BY	RS	CHECKED BY	WB
DRAWN BY	KR	APPROVED BY	RS
SCALE:	HORIZONTAL 1:250 VERTICAL 1:50		
DATE	2017 03 22		
RELEASED FOR CONSTRUCTION	DATE: 4/28/17		

ENGINEER'S SEAL
CONSULTANT DRAWING NUMBER
C-209

THE CITY OF WINNIPEG
WATER AND WASTE DEPARTMENT
ENGINEERING DIVISION

2017 WATERMAIN RENEWALS
CONTRACT 10
ST. MATTHEWS AVENUE
5 EEL VALOUR ROAD TO
SPRUCE STREET

SHEET 11 OF 17
CITY DRAWING NUMBER
D-14667