

POWER WIRING:  
18 #12AWG IN 51mm CONDUIT  
CONTROL WIRING:  
44 #14AWG IN 64mm CONDUIT  
(CONTROL WIRING INCLUDES WIRING  
FOR LOCK-OFF-STOP SWITCHES)  
RUN PARTIALLY IN CRAWLSPACE

CONTROL PANEL MHV-19  
(CIRC. PUMPS) FOR M624-CP17,  
M625-CP18, M626-CP34 & M627-CP35  
LUNCH ROOM CONTROL  
PANEL MHV-20 FOR  
M620-F41  
PACKAGE CONTROL PANEL  
WIRE AS PER MANUFACTURERS  
SHOP DRAWINGS  
WEATHERPROOF DISCONNECT  
ON ROOF FROM CDP IN  
ROOM 123

LOCKER RM./LAB. SERVICES CONTROL  
PANEL MHV-21 FOR M621-F42  
MAG. CONTACTOR FOR M620-F41  
MAG. CONTACTOR FOR M621-F42  
JUNCTION BOX FOR HAIR DRYER  
CCT# M-13/15 REFER TO DWG  
A104 FOR MOUNTING HEIGHT  
JUNCTION BOX FOR HAIR DRYER  
CCT# M-17/19 REFER TO DWG  
A104 FOR MOUNTING HEIGHT  
WALLS ARE 2130mm  
HIGH, CEILING 2740mm  
HIGH

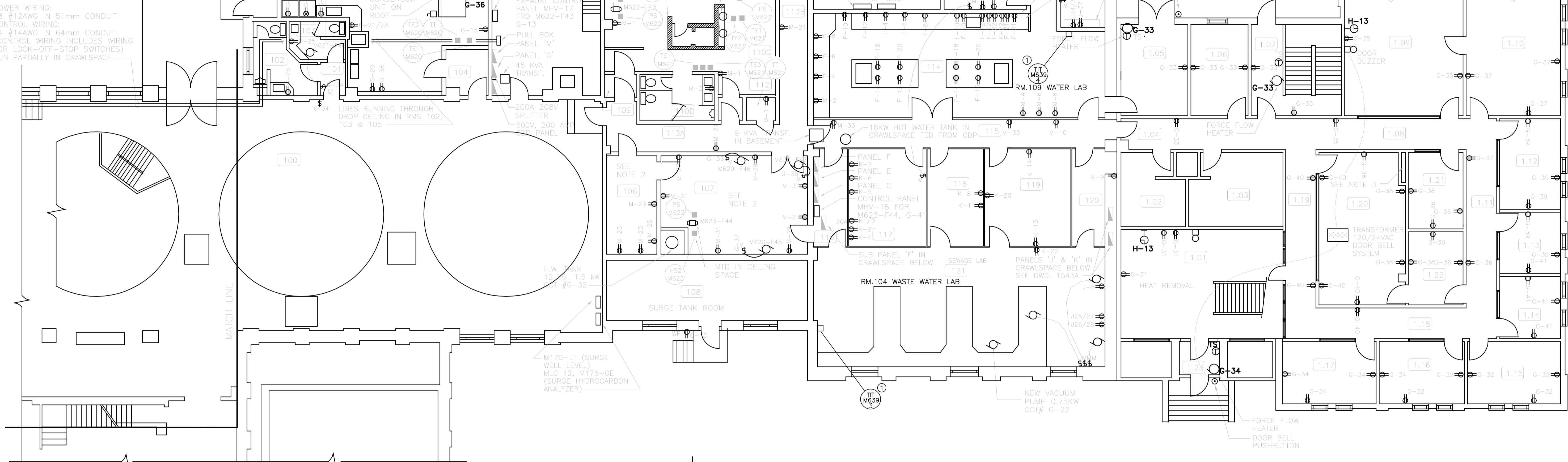
AIR HANDLING UNIT  
ON ROOF FROM CDP IN RM.123  
TS V3 V21 TE2 V22  
M621 M622 M623 M624

HEAT HOOD EXHAUST FAN  
EXISTING LAB VENTILATION SYSTEM  
CONTROL PANEL

ACID EXHAUST HOOD FAN J-15  
FUME HOOD LIGHTS CCT F-26

CCTS M-30, 32 & M-26  
LOCATED ON EXHAUST FAN  
ENCLOSURE ON ROOF

WHEN RECEPTACLES WERE MOUNTED IN  
ROOM 1.09 & 1.10, MTC. HEIGHTS WERE  
FROM COMPUTER FLOORING



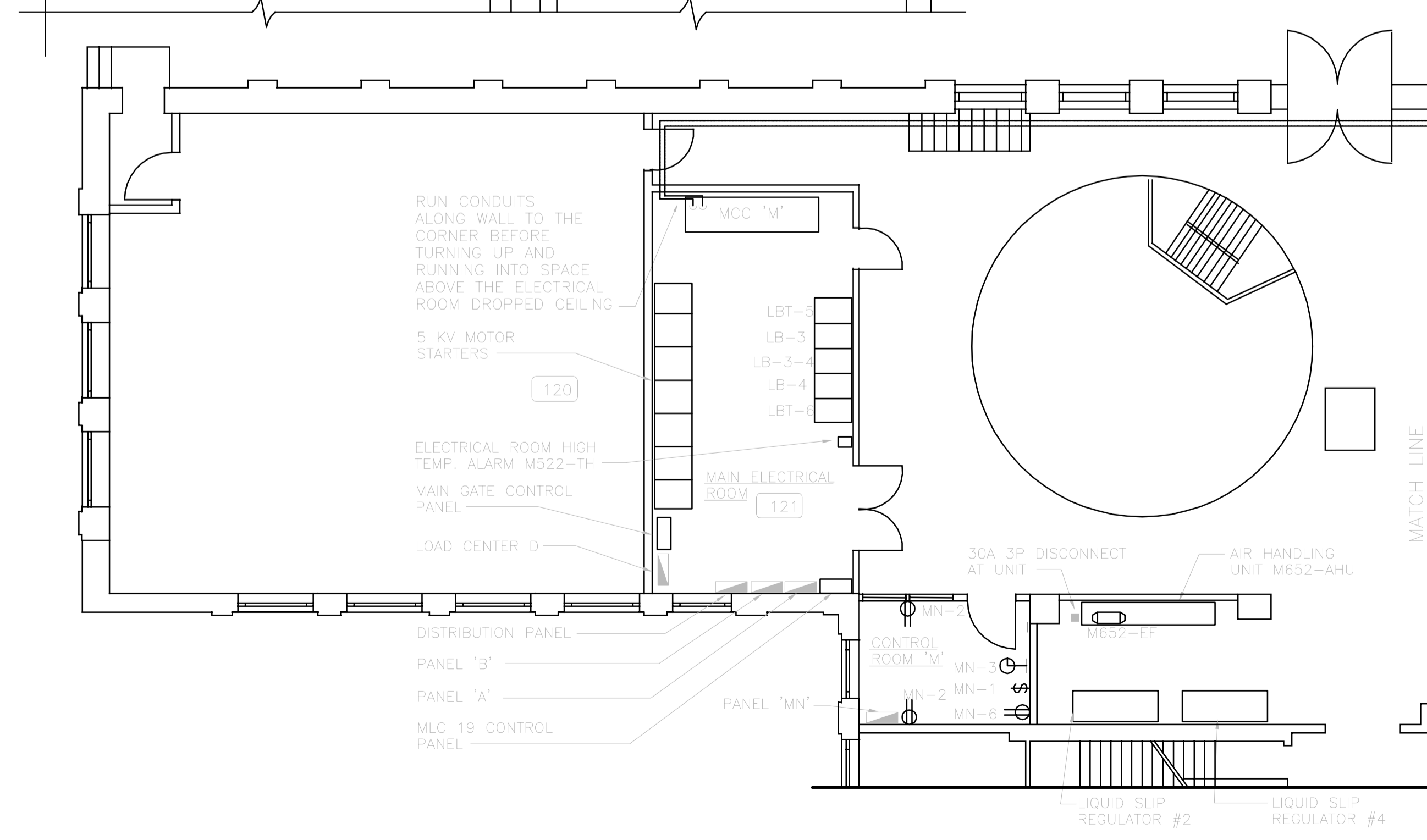
MAIN FLOOR PLAN  
1:100

NOTES:

- 1. CONFIRM MOUNTING LOCATION WITH CONTRACT ADMINISTRATOR PRIOR TO INSTALLATION.

NOTES:

- 1. RECEPTACLES MOUNTED AT 1200mm ABOVE FINISHED FLOOR IN ROOMS 106 & 107.
- 2. RECEPTACLE PROVIDED FOR RELOCATED DRINKING FOUNTAIN.
- 3. CONTRACTOR UTILIZED PIPE CHASE FOR RUNNING CONDUITS BETWEEN MAIN FLOOR, CRAWLSPACE AND SECOND FLOOR.



B.M. ELEV.	DESIGNED BY	CHECKED BY
	R.A.H.	
	DRAWN BY	APPROVED BY
	N.B.	
	HOR. SCALE:	RELEASED FOR CONSTRUCTION:
	VERTICAL: 1:100	
	DATE	DATE
	JUNE/91	

ENGINEER'S SEAL  
CONSULTANT DRAWING NO.  
880012-01-03

THE CITY OF WINNIPEG  
WORKS AND OPERATIONS DIVISION  
WATERWORKS, WASTE & DISPOSAL DEPARTMENT

NORTH END WATER POLLUTION CONTROL CENTRE  
MAIN BUILDING RENOVATIONS-ELECTRICAL  
MAIN FLOOR PLAN  
POWER & EQUIPMENT  
LAYOUT

CITY DRAWING NUMBER  
SHEET OF  
NEP-1540