

- NOTES:**
- ALL WORK AND MATERIALS TO BE IN ACCORDANCE WITH THE LATEST REVISION OF THE CITY OF WINNIPEG STANDARD CONSTRUCTION SPECIFICATIONS.
 - CONTRACTOR TO CONFIRM THE LOCATION OF ALL UTILITIES/SERVICES IN THE FIELD PRIOR TO CONSTRUCTION.
 - ALL ROADWAY DIMENSIONS SHOWN ARE TO BACK OF CURB.
 - ADD 200.00 TO ABBREVIATED ELEVATIONS TO OBTAIN GEODETIC ELEVATION.
 - PAVEMENT REPAIRS SHOWN ARE ONLY A REPRESENTATIVE APPROXIMATION OF THE TENDERED QUANTITIES.
 - RENEW CURB AND SIDEWALK AS IDENTIFIED BY CONTRACT ADMINISTRATOR.
 - ALL PRIVATE WALKWAYS TO BE ADJUSTED TO NEW SIDEWALK OR TOP OF CURB ELEVATION, AS REQUIRED.
 - MODIFIED BARRIER CURB TO BE CONSTRUCTED AT ALL INTERSECTION RADI AND BACK LANE RADI.
 - CONTRACTORS TO TAKE PRECAUTIONARY STEPS TO PROTECT EXISTING TREES WITHIN THE LIMITS OF CONSTRUCTION FROM DAMAGE FROM CONSTRUCTION ACTIVITIES AS OUTLINED IN THE SPECIFICATIONS.
 - LAMP STANDARDS, HYDRO POLES, AND ANCHORS THAT REQUIRE TEMPORARY SUPPORT, REMOVAL OR REPLACEMENT, TO BE DONE SO AT THE EXPENSE OF THE CONTRACTOR AS NECESSARY.
 - ALL BOULEVARDS TO BE SODDED UNLESS OTHERWISE NOTED.
 - TRAFFIC SERVICES TO PAINT TRAFFIC LINES AND BICYCLE LANE MARKINGS (IF REQ'D).
 - CONTRACTOR TO CONFIRM LOCATION AND LIMITS OF SEWER REPAIRS BY PERFORMING VIDEO INSPECTION AND REVIEWING WITH CONTRACT ADMINISTRATOR PRIOR TO CONSTRUCTION (IF REQ'D).

REHABILITATION OF TANOAK PARK DRIVE
INCLUDES STREET LIGHTING PROJECT
SEE DRAWING X-XXXX-XXXX-XXXX

NOTE: These design documents are prepared solely for the use by the party with whom the design professional has entered into a contract and there are no representations of any kind made by the design professional to any party with whom the design professional has not entered into a contract.

EXISTING	LEGEND-PLAN	PROPOSED	EXISTING	LEGEND-PLAN	PROPOSED	EXISTING	LEGEND-PROFILE	PROPOSED
---	WATER MAIN	---	---	HYDRO POLE & LIGHT STANDARD	---	---	---	---
---	LAND DRAINAGE SEWER	---	---	LIGHT STANDARD OR TRAFFIC SIGNAL	---	---	---	---
---	WASTE WATER SEWER	---	---	HYDRO POLE	---	---	---	---
---	HYDRO	---	---	CURB RAMP	---	---	---	---
---	M.T.S.	---	---	DETECTABLE WARNING SURFACE TILE	---	---	---	---
---	GAS	---	---	EDGE OF SIDEWALK	---	---	---	---
---	SIGNALS	---	---	FENCE	---	---	---	---
○	MANHOLE	●	---	PROPERTY LINE	---	---	---	---
□	CATCH BASIN	■	---	EDGE OF ASPHALT	---	---	---	---
△	CURB INLET	▽	---	EDGE OF CONCRETE	---	---	---	---
⊕	UTILITIES ADJUSTED	⊖	---	MODIFIED BARRIER CURB	---	---	---	---
⊔	PLUG	⊓	---	BARRIER CURB	---	---	---	---
⊕	HYDRANT	⊖	---	BARRIER CURB AND GUTTER	---	---	---	---
⊕	VALVE	⊖	---	MODIFIED BARRIER CURB AND GUTTER	---	---	---	---
⊕	CURB STOP	⊖	---	CONCRETE SIDEWALK	---	---	---	---
---	GROUND GRADE	---	---	CONCRETE REPAIR	---	---	---	---
---	PAVEMENT GRADE	---	---	ASPHALT OVERLAY	---	---	---	---
---	ANCHOR	---	---	ASPHALT PARTIAL DEPTH	---	---	---	---
---	CIVIC ADDRESS	---	---	GLASS GRID	---	---	---	---
---	IRON BAR	---	---	ASPHALT MILLING	---	---	---	---

LOCATIONS APPROVED UNDERGROUND STRUCTURES

SIGNED BY: _____ DATE: _____

NO. REVISIONS

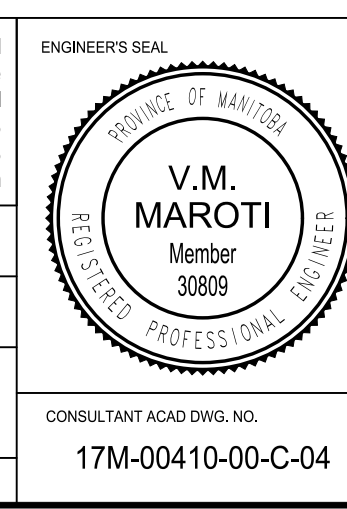
NO.	REVISIONS	DATE	BY
1	ISSUED FOR TENDER	17-MAY-17	JP
2	ISSUED FOR UNDERGROUND STRUCTURES REVIEW	27-APR-17	JP
3	ISSUED FOR CLIENT REVIEW	13-APR-17	JP

WSP

WSP Canada Group Limited
Suite 111 - 93 Lombard Ave
Winnipeg, MB R3B 3B1
t. 204.943.3178
f. 204.943.4948
www.wsp.com

DESIGNED BY: DS
CHECKED BY: JP/TR
DRAWN BY: VALT
APPROVED BY: VM

HOR. SCALE: 1:250
VERTICAL: 1:10
DATE: 09 FEB 2017



THE CITY OF WINNIPEG
PUBLIC WORKS DEPARTMENT
ENGINEERING DIVISION

2017 LOCAL STREET RENEWAL PROGRAM

TANOAK PARK DRIVE
HILLHOUSE ROAD TO HILLHOUSE ROAD
PAVEMENT REHABILITATION
STA. 1+00 TO STA. 2+30

CITY DRAWING NUMBER: 4 OF 12
SHEET 4 OF 12
BID NO. 364-2017

PRELIMINARY

METRIC
WHOLE NUMBERS INDICATE MILLIMETRES
DECIMALIZED NUMBERS INDICATE METRES

APEGM
Certificate of Authorization
MMM Group Limited
No. 4531

May 15, 2017 11:37am P:\2017\17M-00410-00-2017 Local Streets Renewals\17M-00410-00-C-04-C-04-Tanoak Park Drive Plan and Profile 2017.05.15.dwg -tab:04