



# THE CITY OF WINNIPEG

## WATER AND WASTE DEPARTMENT ENGINEERING DIVISION

# Construction of Parker Stormwater Retention Basin Cockburn/Calrossie Combined Sewer Relief Works

**CONTRACT NO: 3**

**BID OPPORTUNITY: 388-2017**

**DRAWING INDEX**

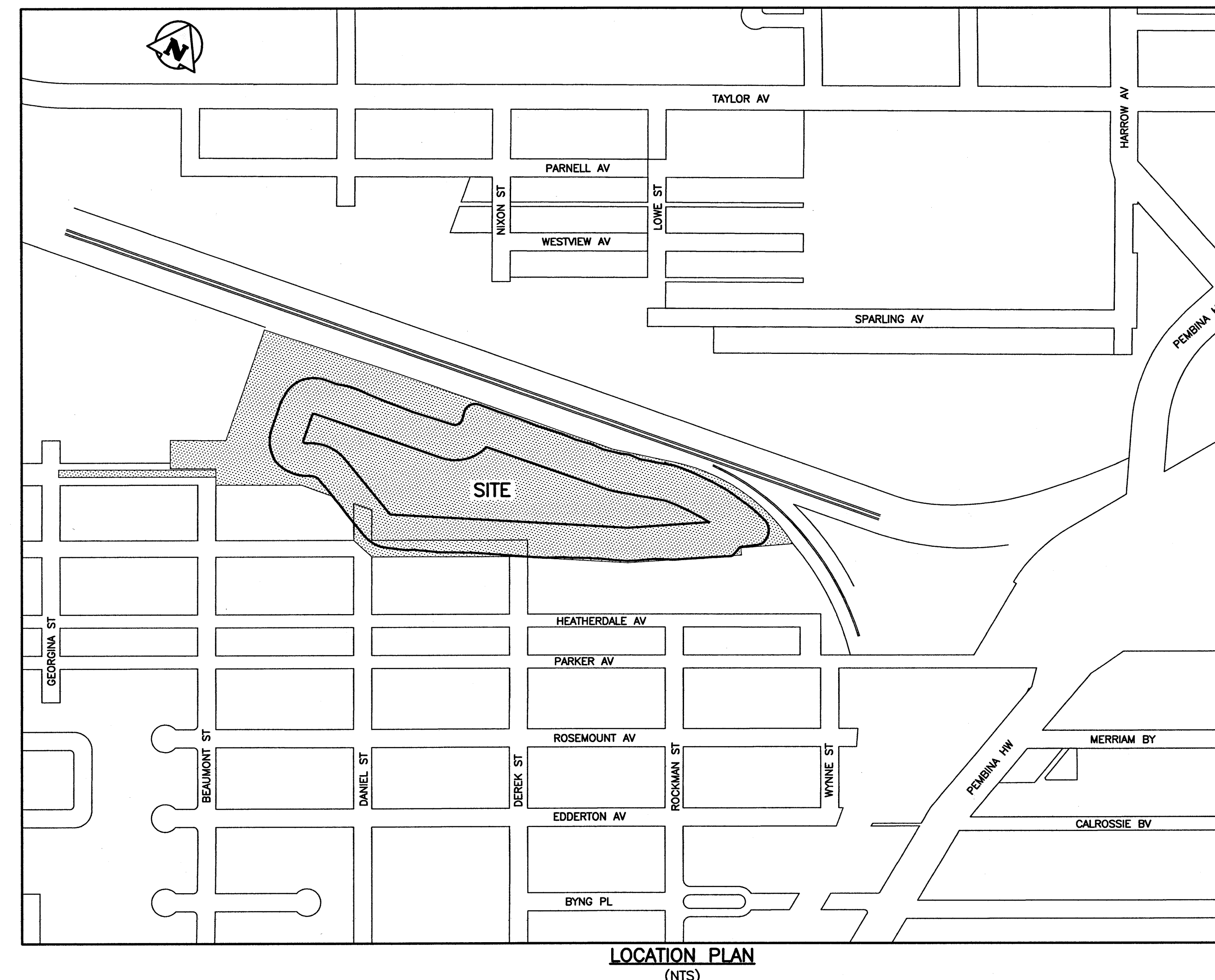
CONSULTANT DRAWING NUMBER	CITY DRAWING NUMBER	DRAWING TITLE
C300	LD-8211	COVER SHEET
C301	LD-8212	GENERAL PLAN & DRAWING INDEX
C302	LD-8213	EXISTING SITE PLAN
C303	LD-8214	SITE PLAN
C304	LD-8215	OUTLET - PLAN/PROFILE
C305	LD-8216	INLET - PLAN/PROFILE - DEREK STREET
C306	LD-8217	TEMPORARY ACCESS ROAD - PLAN/PROFILE - GEORGINA STREET TO STA 1+85
C307	LD-8218	TEMPORARY ACCESS ROAD - PLAN/PROFILE - STA 1+85 TO EAST LIMIT
C308	LD-8219	PERMANENT SITE ACCESS - PLAN/PROFILE - DEREK STREET
C309	LD-8220	PERMANENT SITE ACCESS - PLAN/PROFILE - DANIEL STREET
C310	LD-8221	ONSITE MAINTENANCE ROAD - PLAN/PROFILE
C311	LD-8222	TYPICAL SECTIONS & DETAILS - MISC
C312	LD-8223	TYPICAL SECTIONS & DETAILS - OUTLET END TREATMENT & COLLAR
C313	LD-8224	TYPICAL SECTIONS & DETAILS - SAFETY FENCING
S301	LD-8225	INLET CONTROL CHAMBER - GENERAL ARRANGEMENT - PLANS
S302	LD-8226	INLET CONTROL CHAMBER - GENERAL ARRANGEMENT - SECTIONS
S303	LD-8227	INLET HEADWALL STRUCTURE - GENERAL ARRANGEMENT - PLANS, SECTIONS AND DETAILS
S304	LD-8228	INLET CONTROL CHAMBER - CONCRETE REINFORCING - PLANS, SECTIONS AND DETAILS
S305	LD-8229	INLET HEADWALL STRUCTURE - METAL FABRICATIONS - PLANS, SECTIONS AND DETAILS
S306	LD-8230	INLET CONTROL CHAMBER - MISCELLANEOUS METALS - DETAILS
S307	LD-8231	PARK SHADE STRUCTURE - GENERAL ARRANGEMENT - PLAN, SECTIONS AND DETAILS
L301	LD-8232	WETLAND PLANTING
L302	LD-8233	UPLAND PLANTING
L303	LD-8234	PATH DETAIL
L304	LD-8237	LANDSCAPE DETAILS

RELEASED FOR CONSTRUCTION BY:

\_\_\_\_\_

WATER & WASTE DEPARTMENT PROJECT ENGINEER

DATE: \_\_\_\_\_



**LOCATION PLAN**  
(NTS)

File Name: P:\Projects\2011\1-0107-18\Dwg\Mun\C3 - Pond\11-0107-18\_POND.dwg - Tab: C300 Plotted By: Gloewen 17/07/12 [Wed 2:07pm]