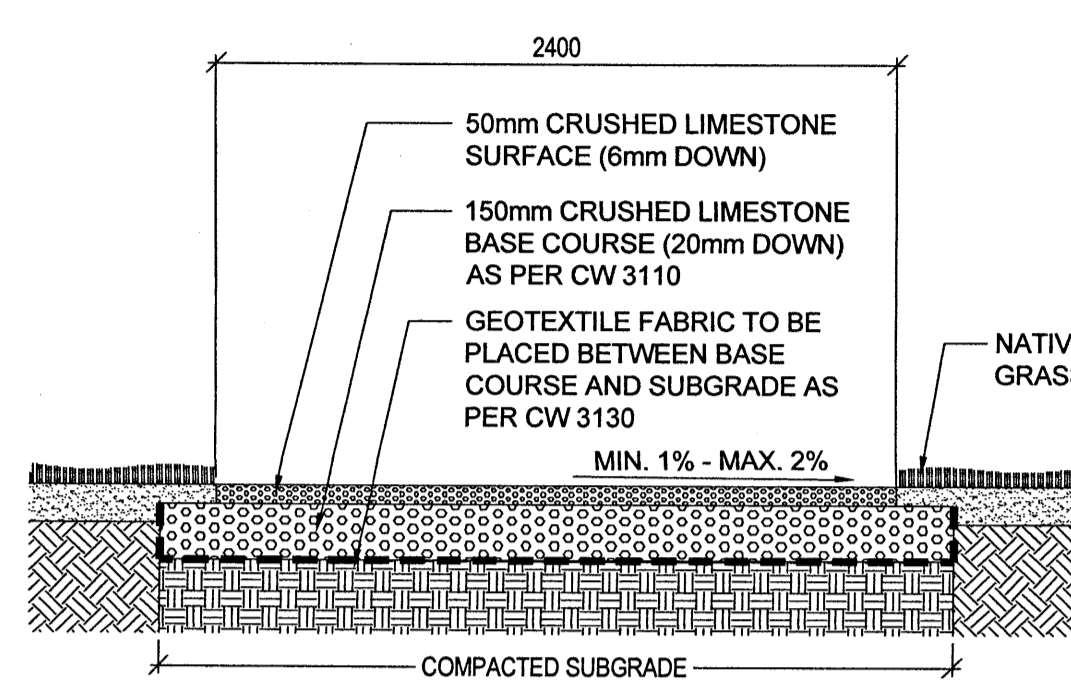
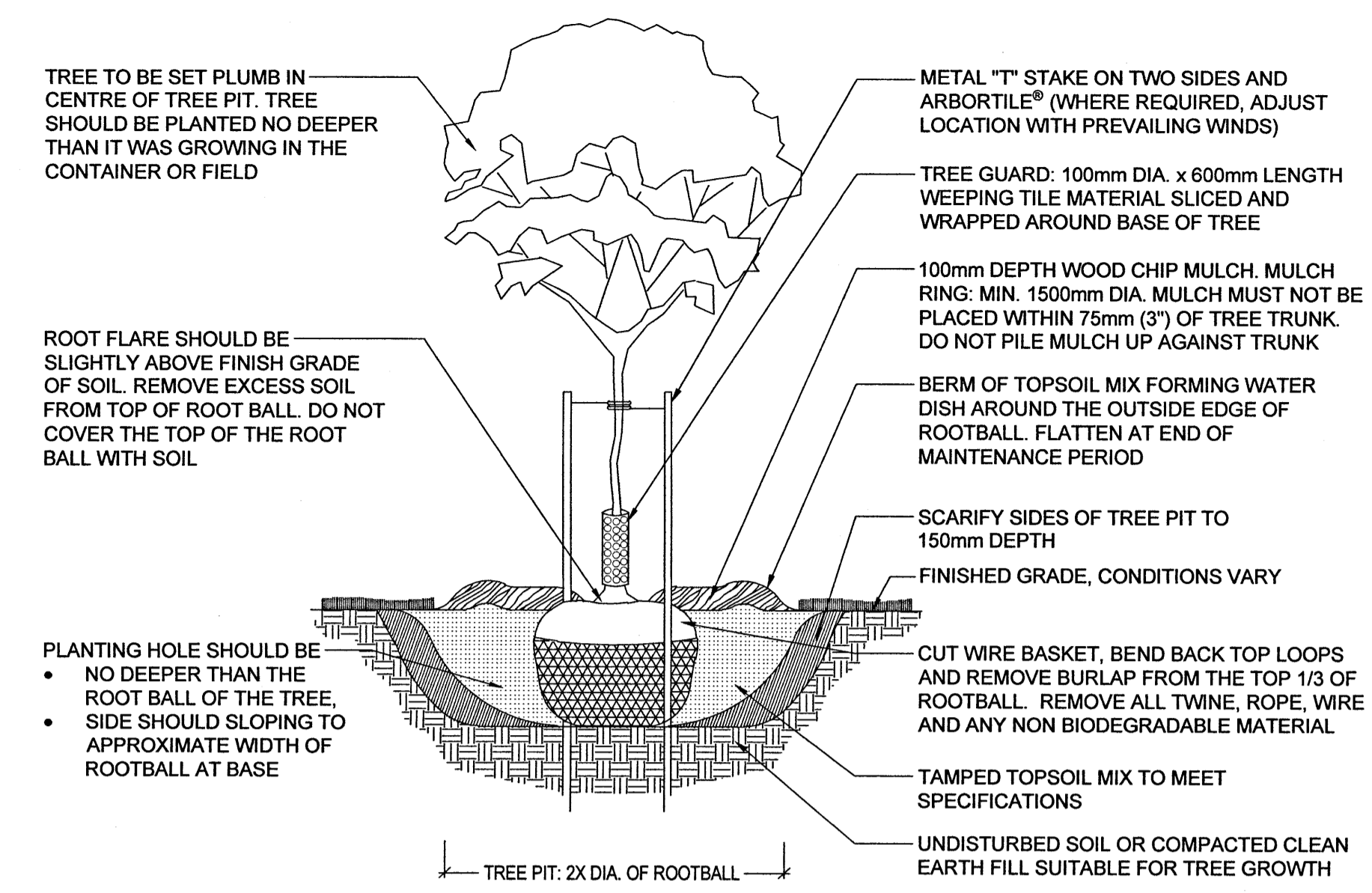


S:\data\from-sewer2\PROJECTS\2016 Projects\16-0535-008 Cockburn Calrossie\Working\Cockburn Calrossie-PLAN WETLAND-UPLAND CURRENT.dwg



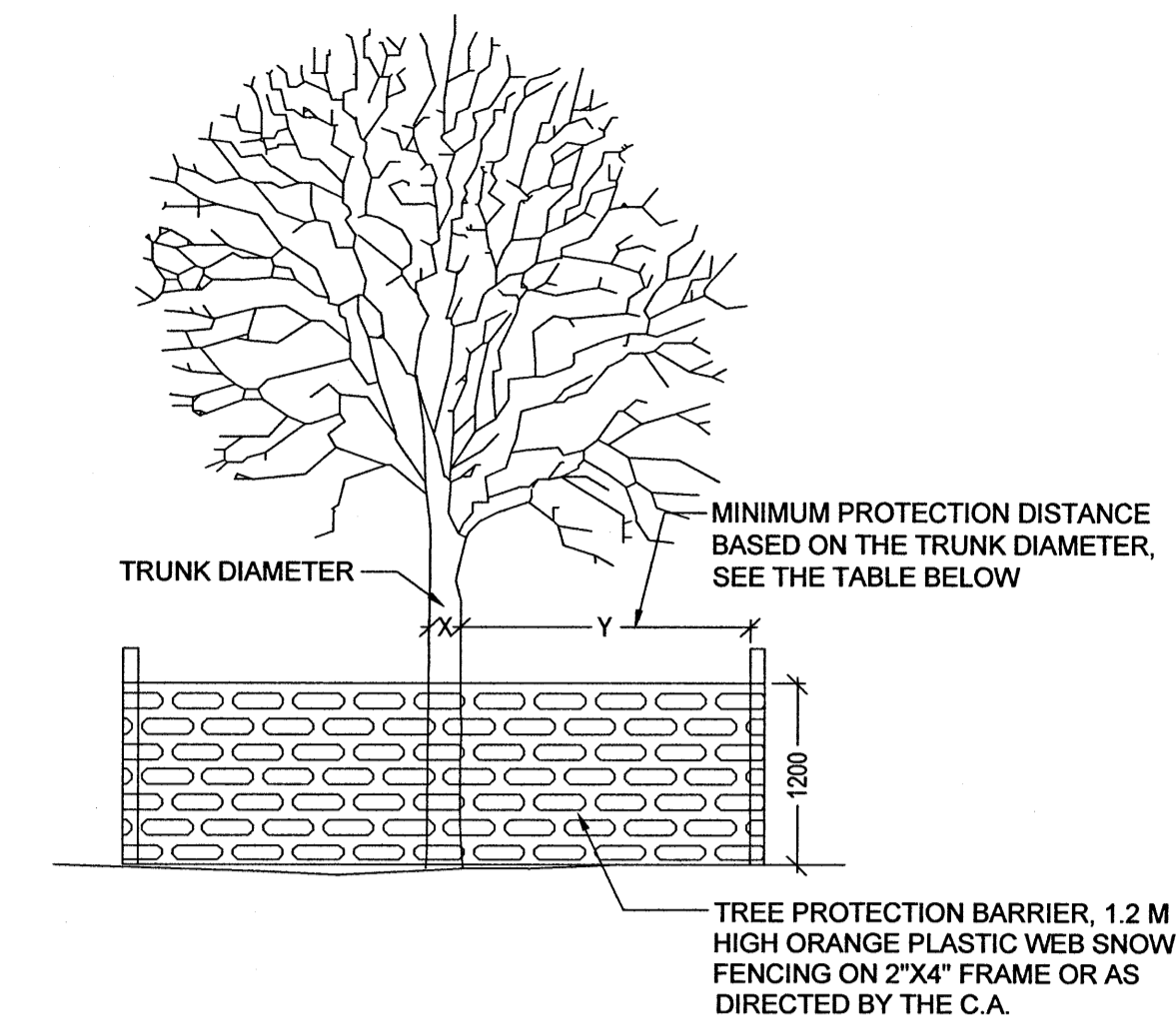
**1 GRANULAR PATH TYP.**  
L304 1:20



**2 TREE PLANTING DETAIL**  
L304 1:25

**TREE PLANTING NOTES:**

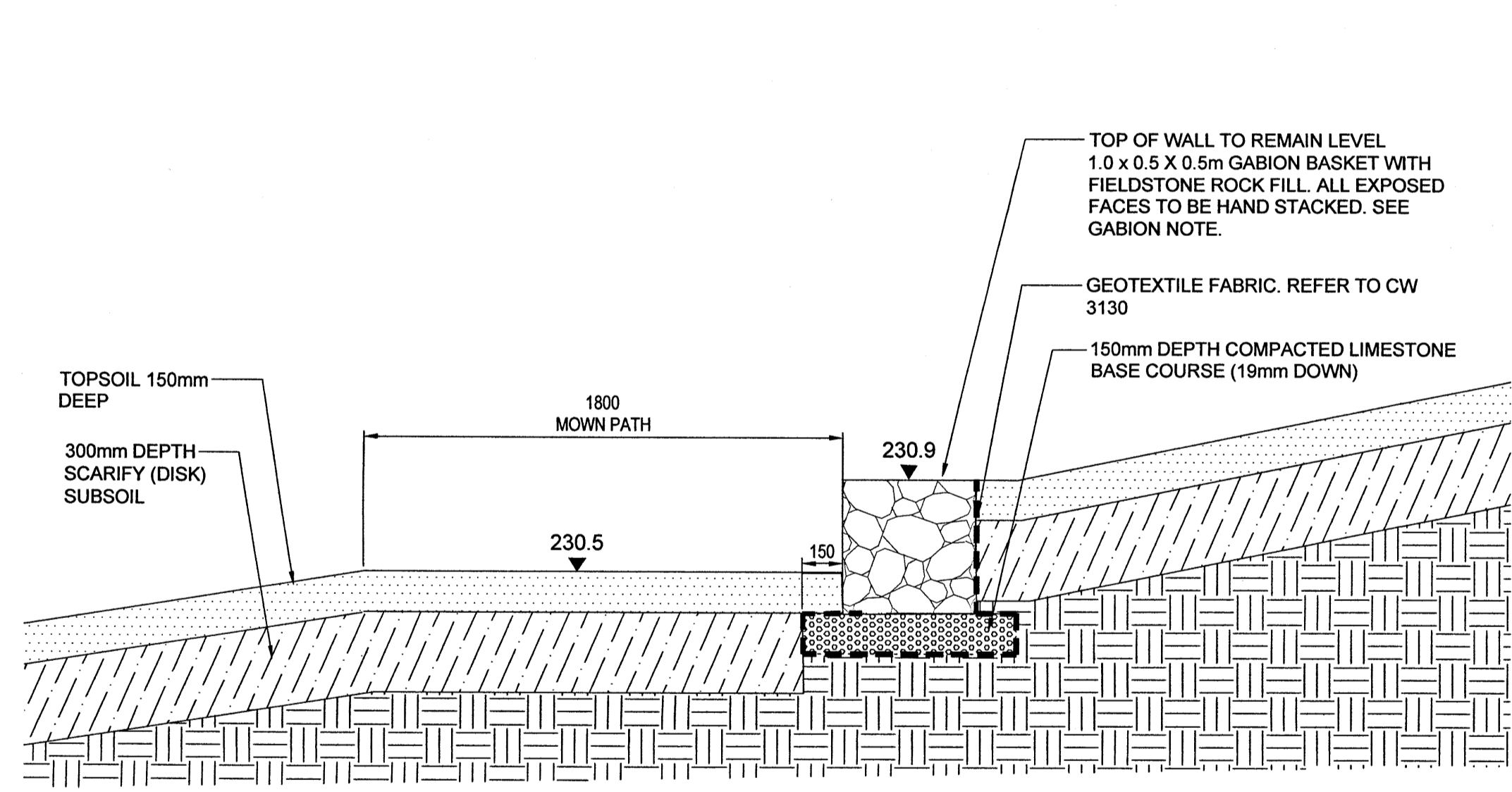
- LAYOUT OF PLANT MATERIAL TO BE APPROVED BY L.A. PRIOR TO INSTALLATION.
- PIT TO BE DUG WITH BACK HOE NOT TREE SPADE.**
- CONTRACTOR TO ENSURE T-BARS DO NOT PENETRATE ROOT BALL. SECURE T-BARS TO TREE @ APPROX. 2/3 TOTAL TREE HEIGHT ABOVE FIN. GRADE.
- TREE SHALL BE PRUNED IMMEDIATELY AFTER PLANTING TO REMOVE DEAD, BROKEN, DISEASED, DYING OR RUBBING BRANCHES. CO-DOMINANT STEMS LESS THAN 100mm (4") DIA. AT THE FORKS SHALL BE PRUNED OFF AND ONE MAIN STEM SHOULD REMAIN. TREE TOPPING OR HEADING IS NOT PERMITTED AT ANY TIME.
- STAKES & TIES TO BE REMOVED BY CONTRACTOR AT END OF MAINTENANCE PERIOD AND UPON ACCEPTANCE BY L.A.
- WOOD CHIP MULCH TO BE REMOVED AND DISPOSED OF WHEN NATIVE SEEDING OCCURS.
- ARBORTILE®  
DEEP ROOT CANADA CORP.  
TEL: 604-887-0899  
TOLL FREE: 800-561-3883  
WEBSITE: <http://www.deeproot.com>  
EMAIL: [mjames@deeproot.com](mailto:mjames@deeproot.com)
- ALSO REFER TO CITY OF WINNIPEG TREE PLANTING AND MAINTENANCE SPECIFICATION.



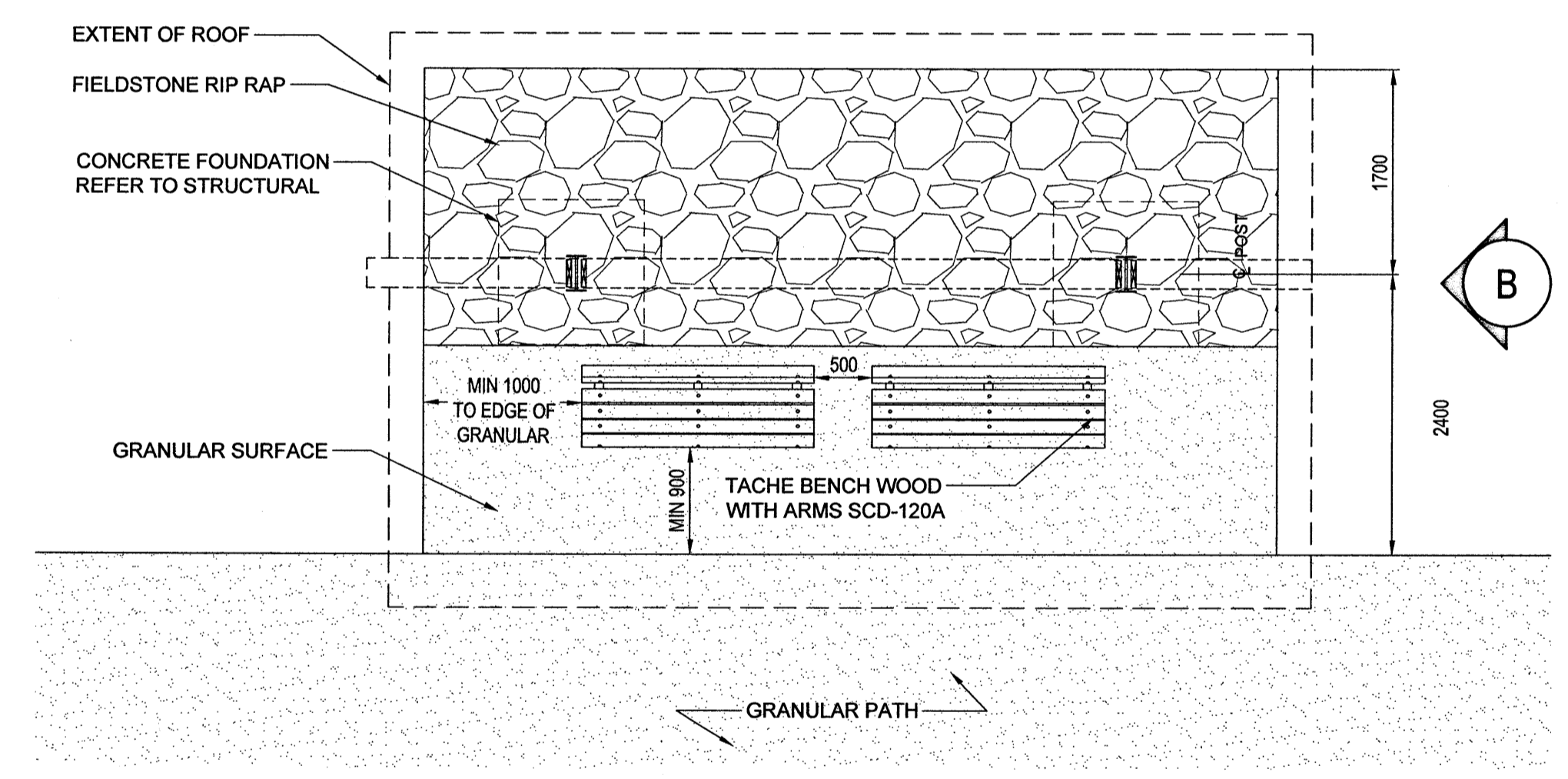
**3 TREE PROTECTION**  
L304 1:50

TREE PROTECTION ZONES	
X= TRUNK DIAMETER	Y= MINIMUM PROTECTION DISTANCE REQUIRED
<10 CM	2.0 M
11-40CM	2.4M
41-50CM	3.0M
51-60CM	3.6M
61-70CM	4.2M
71-80CM	4.8M
81-90CM	5.4M
91-100CM+	6.0M

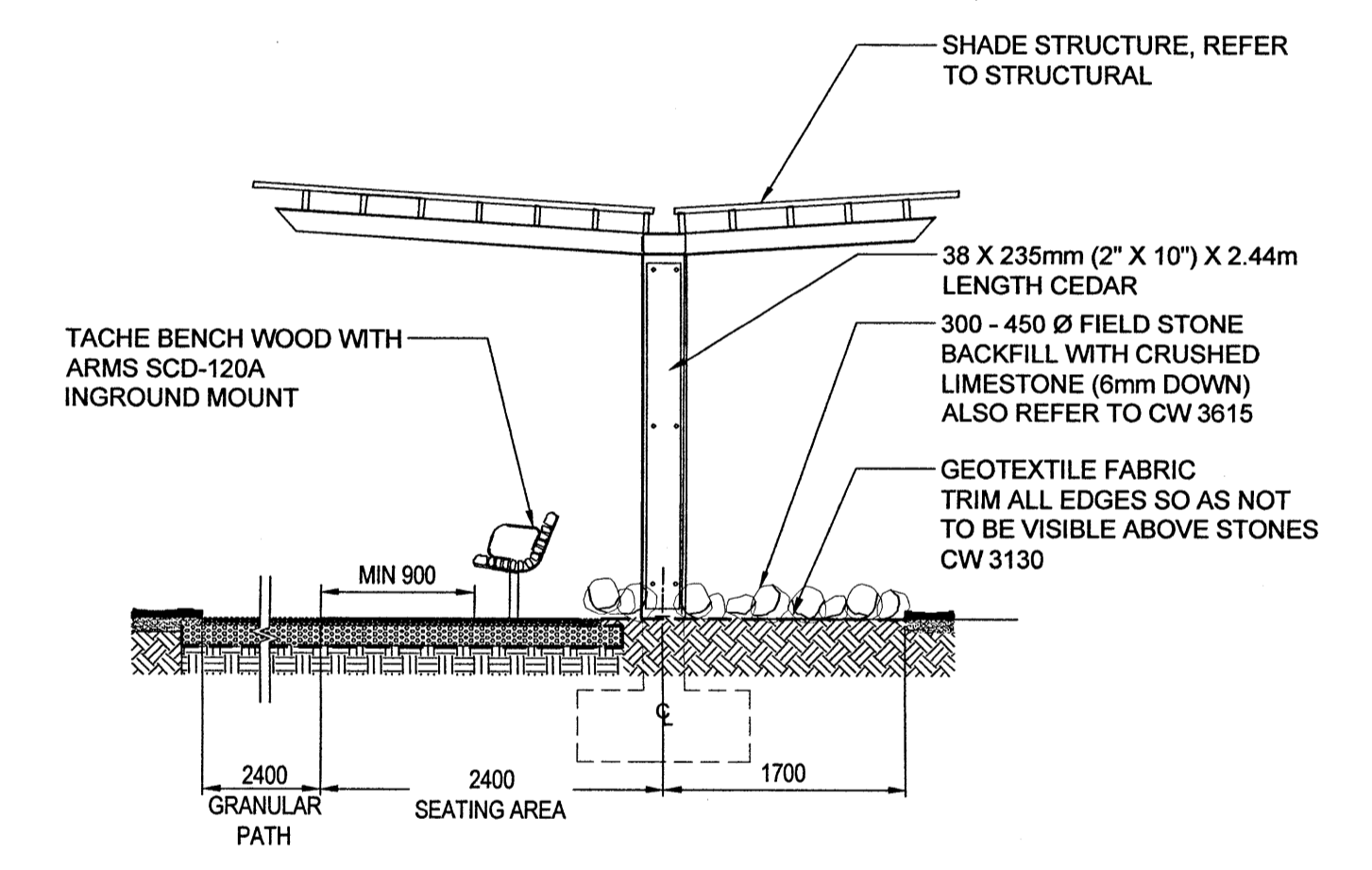
- Trunk diameter is measured at breast height at 1.4 metres above ground
  - Tree protection zone distances are to be measured from the outside edge of the tree base towards the drip line.
- NOTE:**
- Strap mature tree trunks with 25 x 150 x 2400mm wood planks. Smaller trees shall be similarly protected using appropriate sized wood planks.
  - Do not stockpile materials and soil or park vehicles and equipment on boulevards within 2 metres of trees.
  - Excavations shall be carried out in a manner to minimize damage to existing root system. Where roots must be cut to facilitate an excavation they shall be neatly pruned at the face of the excavation.
  - Work on site shall be carried out in a manner to minimize damage to existing tree branches. Where damage to tree branches does occur, the contractor shall neatly prune the damaged branch.



**4 MID-BANK MOWN PATH RETENTION WALL DETAIL**  
L304 1:20



**5 SHADE CANOPY**  
L304 AS SHOWN



**B ELEVATION**  
1:50

**GABION NOTE:**

- ALL MATERIALS AND CONSTRUCTION METHODS FOR THE SUPPLY AND INSTALLATION OF THE GABIONS SHALL BE IN ACCORDANCE WITH THE MANUFACTURER'S RECOMMENDATIONS, AND AS ACCEPTED BY THE CONTRACT ADMINISTRATOR.
- THE GABION BASKETS SHALL BE MACCAFERRI OR APPROVED EQUAL -SAMPLE TO BE APPROVED BY CONTRACT ADMINISTRATOR.
- ROCK FILL MATERIAL TO BE FIELDSTONE BOULDERS.
- SIZE OF EXPOSED ROCK FILL TO MEET MANUFACTURER RECOMMENDATION WITH EQUAL DISTRIBUTION OF 100MM - 200MM DIAMETER ROCKS, ROCKS NOT TO EXCEED 200MM DIAMETER.
- CONTRACTOR IS TO SUPPLY SAMPLE OF EXPOSED ROCK FILL FOR APPROVAL PRIOR TO DELIVERY ON SITE.

150 WM	WATER MAIN	150 WM	HYDRO	150 WM	WATER MAIN	150 WM
+	HYDRANT	+	M.T.S.	+	HYDRANT, VALVE	+
+	VALVE	+	CONCRETE	+	LAND DRAINAGE SEWER	+
300 LBS	LAND DRAINAGE SEWER	300 LBS	ASPHALT	250 WWS	WASTE WATER SEWER	250 WWS
250 WWS	WASTE WATER SEWER	250 WWS	SIDEWALK	X	CENTRELINE	X
○	MANHOLE	○	PLANNING	□	NORTH/WEST GUTTER	□
□	CATCH BASIN	□	PROPERTY LINE	○	SOUTH/EAST GUTTER	○
▽	CURB INLET	▽	SURVEY BAR	◇, ○	N/W, S/E R'S	◇, ○
▽	BEND	▽	GAS			
▽	REDUCER	▽	CURB STOP			
J	TEE	J	TEE			
EXISTING	LEGEND-PLAN	PROPOSED	EXISTING	LEGEND-PROFILE	PROPOSED	EXISTING

**LOCATION APPROVED UNDERGROUND STRUCTURES**

SUPV. U/G STRUCTURES COMMITTEE DATE

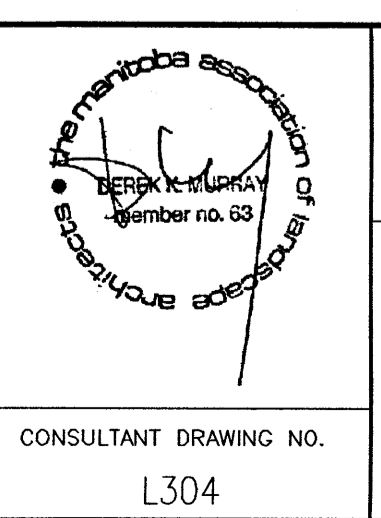
**NOTE:**  
LOCATION OF UNDERGROUND STRUCTURES AS SHOWN ARE BASED ON THE BEST INFORMATION AVAILABLE BUT NO GUARANTEE IS GIVEN THAT ALL EXISTING UTILITIES ARE SHOWN OR THAT THE GIVEN LOCATIONS ARE EXACT. CONFIRMATION OF EXISTENCE AND EXACT LOCATION OF ALL SERVICES MUST BE OBTAINED FROM THE INDIVIDUAL UTILITIES BEFORE PROCEEDING WITH CONSTRUCTION.

NO.	REVISIONS	DATE	BY
0	ISSUED FOR CONSTRUCTION	17/07/12	DM

**SCATLIFF + MILLER + MURRAY**  
visionary urban design + landscapes

DESIGNED BY: **MB / CP**  
DRAWN BY: **MB / WF**  
HOR. SCALE: **AS NOTED**  
VERTICAL: **16/06/10**

CHECKED BY: **DM**  
APPROVED BY: **DM**  
RELEASED FOR CONSTRUCTION: **16/06/10**



**THE CITY OF WINNIPEG**  
WATER AND WASTE DEPARTMENT

PROJECT TITLE: **COCKBURN/CALROSSIE COMBINED SEWER RELIEF WORKS**  
LANDSCAPE DETAILS

CONSULTANT DRAWING NO. **L304**

SHEET OF	1 OF 1
COMPUTER FILE NAME	-
CITY DRAWING NUMBER	<b>LD-8237</b>