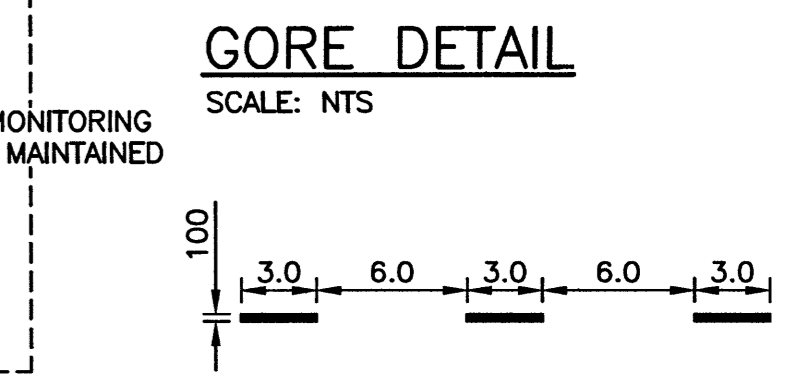
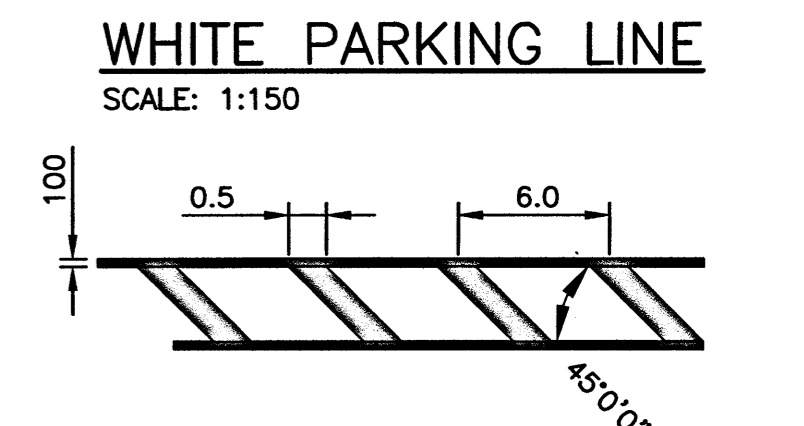
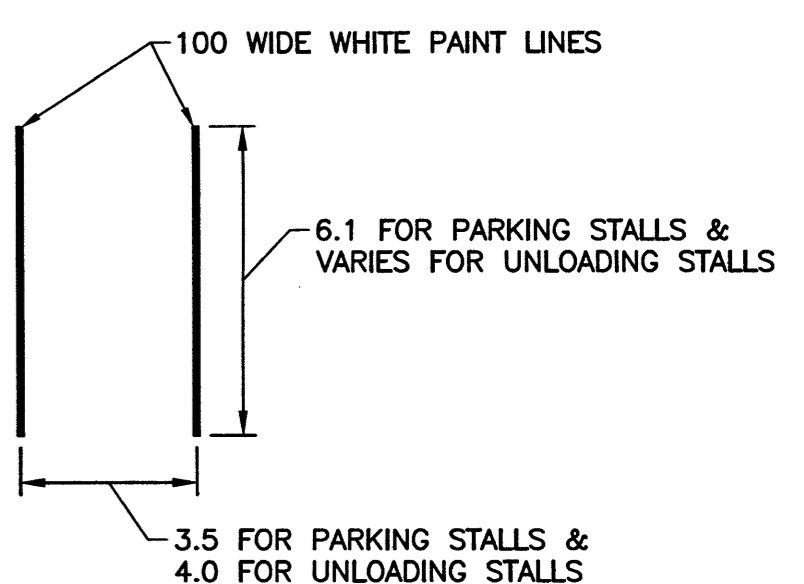
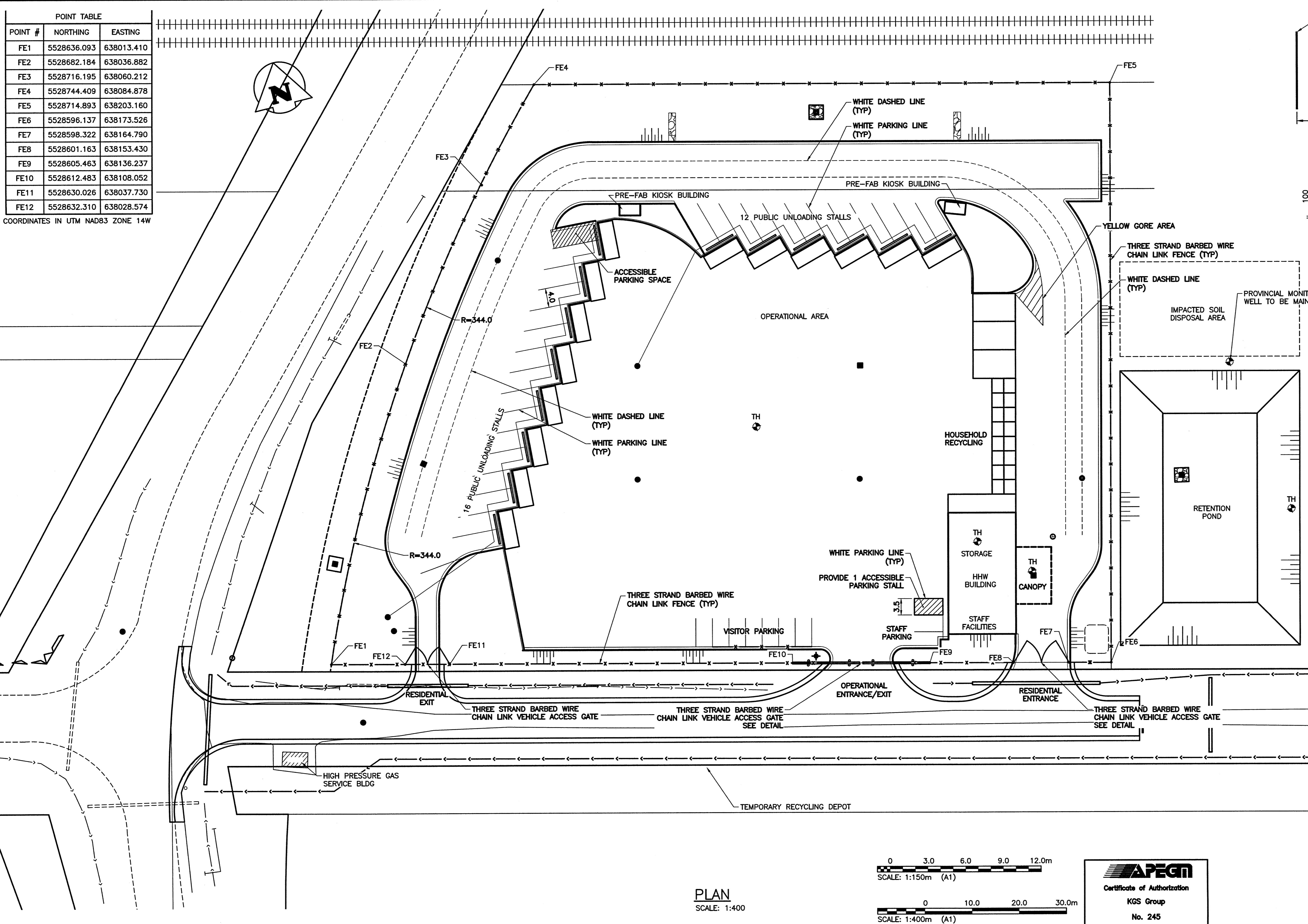


POINT #	NORTHING	EASTING
FE1	5528636.093	638013.410
FE2	5528682.184	638036.882
FE3	5528716.195	638060.212
FE4	5528744.409	638084.878
FE5	5528714.893	638203.160
FE6	5528596.137	638173.526
FE7	5528598.322	638164.790
FE8	5528601.163	638153.430
FE9	5528605.463	638136.237
FE10	5528612.483	638108.052
FE11	5528630.026	638037.730
FE12	5528632.310	638028.574

COORDINATES IN UTM NAD83 ZONE 14W



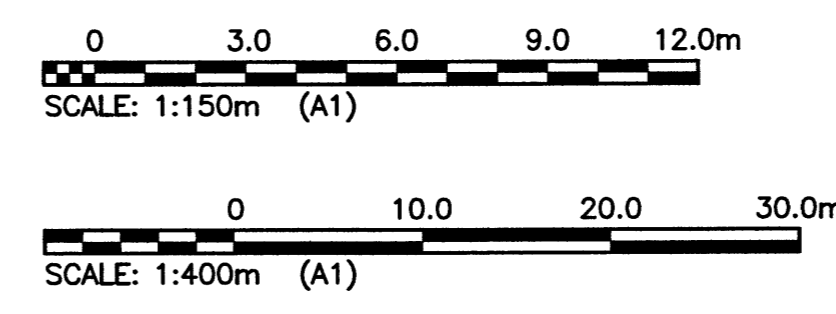
- WARNING**
1. NOTIFY THE GAS COMPANY OF THE PROPOSED LOCATION OF EXCAVATION.
 2. TAKE PRECAUTION TO AVOID DAMAGE TO GAS COMPANY INSTALLATIONS.
 3. SEE PROVINCIAL REGULATION 210/72 FOR DETAILS.
 4. OBTAIN PERMITS PRIOR TO CONSTRUCTION.

PROPERTY LIMITS DELINEATION

DELINEATION OF PROPERTY LIMITS AS SHOWN ON THIS DWG DOES NOT REPRESENT A "LEGAL SURVEY". KGS GROUP MAKES NO REPRESENTATION OR WARRANTY AS TO THE ACCURACY OF PROPERTY LIMITS DELINEATED ON THIS DWG, NOR ON THE DIMENSIONAL ACCURACY OF DWG FEATURES RELATIVE TO THOSE PROPERTY LIMITS.

METRIC

WHOLE NUMBERS INDICATE MILLIMETRES
DECIMALIZED NUMBERS INDICATE METRES

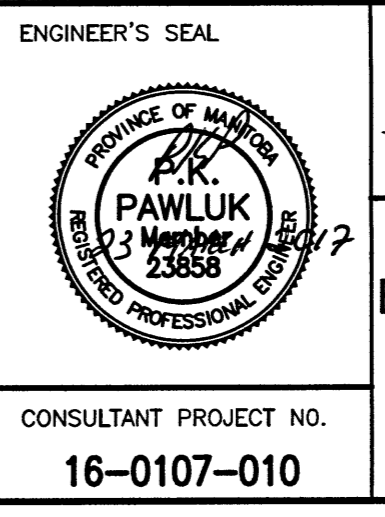


PLAN
SCALE: 1:400

EXISTING	LEGEND-PLAN	PROPOSED	EXISTING	LEGEND-PLAN	PROPOSED	EXISTING	LEGEND-PROFILE	PROPOSED
150 WM	WATER MAIN	150 WM	HYDRO	M.T.S.	CONCRETE	150 WM	WATER MAIN	150 WM
300 LBS	HYDRANT VALVE	300 LBS	300 LBS	LAND DRAINAGE SEWER	300 LBS	300 LBS	LAND DRAINAGE SEWER	300 LBS
250 WWS	WASTE WATER SEWER	250 WWS	250 WWS	WASTE WATER SEWER	250 WWS	250 WWS	WASTE WATER SEWER	250 WWS
MANHOLE	MANHOLE	MANHOLE	MANHOLE	MANHOLE	MANHOLE	MANHOLE	MANHOLE	MANHOLE
CATCH BASIN	CATCH BASIN	CATCH BASIN	CATCH BASIN	CATCH BASIN	CATCH BASIN	CATCH BASIN	CATCH BASIN	CATCH BASIN
CURB INLET	CURB INLET	CURB INLET	CURB INLET	CURB INLET	CURB INLET	CURB INLET	CURB INLET	CURB INLET
JUNCTIONS	JUNCTIONS	JUNCTIONS	JUNCTIONS	JUNCTIONS	JUNCTIONS	JUNCTIONS	JUNCTIONS	JUNCTIONS
CULVERT	CULVERT	CULVERT	CULVERT	CULVERT	CULVERT	CULVERT	CULVERT	CULVERT
GAS	GAS	GAS	GAS	GAS	GAS	GAS	GAS	GAS

LOCATION APPROVED UNDERGROUND STRUCTURES	B.M.	ELEV.
SUPV. U/G STRUCTURES COMMITTEE	33-014	231.421m
DATE		
NOTE:		
LOCATION OF UNDERGROUND STRUCTURES AS SHOWN ARE BASED ON THE BEST INFORMATION AVAILABLE BUT NO GUARANTEE IS GIVEN THAT ALL EXISTING UTILITIES ARE SHOWN OR THAT THE GIVEN LOCATIONS ARE EXACT. CONFIRMATION OF EXISTENCE AND EXACT LOCATION OF ALL SERVICES MUST BE OBTAINED FROM THE INDIVIDUAL UTILITIES BEFORE PROCEEDING WITH CONSTRUCTION.		
ISSUED FOR TENDER	17/03/23	PP
NO. REVISIONS	DATE	BY

KGS GROUP CONSULTING ENGINEERS	
DESIGNED BY	PP
CHECKED BY	PPH
DRAWN BY	SAG
APPROVED BY	PPH
HOR. SCALE:	1:400
VERTICAL:	-
RELEASED FOR CONSTRUCTION:	
DATE	16/08/17



THE CITY OF WINNIPEG WATER AND WASTE DEPARTMENT

PROJECT TITLE: 4R WINNIPEG DEPOT EAST WINNIPEG COMMUNITY RESOURCE RECOVERY CENTRE SITE FENCING AND PAINTING

ENGINEER'S SEAL: PAWLUK, No. 23858

CONSULTANT PROJECT NO.: 16-0107-010

SHEET 08 OF 41

COMPUTER FILE NAME: 16-0107-010

CONSULTANT DRAWING NUMBER: C07

Filepath: P:\Projects\2016\16-0107-010\16-0107-010_CALL - Tab:07 Plotted By: sgoel 17/03/23 [Thu 4:05pm] 24x36 / PLOT SCALE: