

KEYNOTES:

- 1 COORDINATE WITH MTS TO PROVIDE A NEW SERVICE.
- 2 COORDINATE WITH MB HYDRO TO PROVIDE A NEW 200A UNDERGROUND ELECTRICAL SERVICE. FINAL PATHWAYS SHALL BE COORDINATED WITH MB HYDRO. ALL MB HYDRO COSTS SHALL BE PAID FOR BY THE CITY.
- 3 PROVIDE TRENCHING AS REQUIRED BY MB HYDRO, MTS AND CEC. FINAL PATHWAY SHALL BE COORDINATE WITH MB HYDRO.
- 4 BUILDING GROUNDING SYSTEM. EXTEND A #40 AWG STRANDED COPPER TO MAIN ELECTRICAL ROOM THROUGH THE CSTE.
- 5 PROVIDE NEW IPLC PARKING LOT RECEPTACLES FOR ALL THE PARKING SPACES AS INDICATED ON THE DRAWING COMPLETE WITH WEATHERPROOF SELF CLOSING COVERS.
- 6 PROVIDE NEW SITE LIGHTING AND SAFETY CAMERAS AS INDICATED ON THE DRAWING.
- 7 PROVIDE ONE (1) 53mm HDPE CONDUIT FOR SECURITY CW:
- 2C #10 AWG CU RWU90 + GND
- 8 STRAND MM NON-CONDUCTIVE FIBRE OPTIC CABLE (FOR CCTV CAMERAS)
- 8 PROVIDE A 2C #10 AWG CU TECK90 + GND (FOR POWER) AND A (1) 27MM HDPE CONDUIT FOR DATA SECURITY CW 12 STRAND MM NON-CONDUCTIVE FIBRE OPTIC CABLE (FOR DATA).
- 9 PROVIDE (1) 21 mm HDPE CONDUIT FOR SECURITY CW UNDERGROUND RATED SHIELDED TWISTED PAIRS CABLE (FOR INTRUSION).
- 10 THE ELECTRICAL SUBCONTRACTOR SHALL COORDINATE THE RELOCATION OF THE MB HYDRO POLE WITH MB HYDRO. ALL MB HYDRO COSTS FOR RELOCATING THE POLE SHALL BE PAID FOR BY THE CITY. REFER TO THE CIVIL DRAWINGS FOR THE EXACT LOCATION.
- 11 THE ELECTRICAL SUBCONTRACTOR SHALL COORDINATE WITH MB HYDRO TO PROVIDE ROADWAY LIGHTING ON THE EXTENSION OF MISSION ROAD. ALL MB HYDRO COSTS SHALL BE PAID FOR BY THE CITY.

SITE SERVICING NOTES

- S1 MB HYDRO POLE AND POLE MOUNTED TRANSFORMERS SUPPLIED AND INSTALLED BY MB HYDRO.
 - S2 CONTRACTOR TO EXTEND MB HYDRO AND MTS SERVICE CONDUITS TO SERVICE CONNECTION POINTS AS DIRECTED BY LOCAL UTILITIES. EXACT LOCATION OF SERVICE CONNECTION POINTS TO BE CONFIRMED WITH MB HYDRO. MTS AUTHORIZED PERSONNEL PRIOR TO INSTALLATION OF ANY CONDUIT. UNDERGROUND FEEDER PATHS SHOWN ARE DIAGRAMMATICAL ONLY. EXACT PATH TO BE COORDINATED ON SITE.
 - S3 THE ELECTRICAL SUBCONTRACTOR SHALL COORDINATE THE MTS CONDUIT ROUGH-IN BETWEEN THE BUILDING AND MB HYDRO POLE ON SITE PRIOR TO ANY INSTALLATION WITH THE CORRESPONDING UTILITIES.
 - S4 ALL OUTSIDE LIGHTING SHOWN ON THIS PLAN IS FOR THE PURPOSE OF SITE LIGHTING AND SHALL BE WIRED TO A COMMON PANEL IN THE MAIN ELECTRICAL ROOM SERVING THE BUILDING. WIRE VIA LIGHTING CONTRACTOR PHOTOCELL, ON PHOTOCELL ON DUSK TO DAWN, OR PHOTOCELL ON TIMELOCK ON DUSK TILL 1:00 PM, OR ON DDC CONTROL. CONFIRM HOURS OF OPERATION WITH THE CITY.
 - S5 ALL OUTSIDE WIRING TO BE MIN. 2C#10 TECK90 CW EQUIP. GROUND. THE ELECTRICAL SUBCONTRACTOR TO SUPPLY AND INSTALL ALL WIRING, CONDUITS, BREAKERS, LIGHTING CONTRACTORS, ETC. FOR A COMPLETE AND OPERATIONAL INSTALLATION. ENSURE VOLTAGE DROP DOES NOT EXCEED THE LIMITATIONS AS STIPULATED IN THE CURRENT EDITION OF THE CANADIAN ELECTRICAL CODE.
- CONDUIT TYPES**
- HYDRO PRIMARY CONDUIT(S) / EQUIP.
 - - - HYDRO SECONDARY CONDUIT(S)
 - MTS CONDUIT(S)
 - UNDERGROUND SITE CONDUITS/CABLES LIGHTING
- NOTE: NUMBER AND SIZE OF CONDUITS AS INDICATED I.e. (2-4" SEC) ALL CONDUITS TO BE 25' PULL STRINGS IN EACH.
- NOTE: TEL / TV CONDUITS MUST NOT EXCEED 2" Ø" BENDS. CORE LINE AND FLEX CONDUIT IS NOT ACCEPTABLE.
- NA - INDICATES NOTE IS NOT APPLICABLE.

HYDRO NOTES

- THE ELECTRICAL SUBCONTRACTOR SHALL BE RESPONSIBLE FOR COORDINATING THE FOLLOWING WITH THE LOCAL MB HYDRO OFFICE:
1. APPROVAL OF ANY CHANGES TO THE UNDERGROUND CONDUIT ROUTE PRIOR TO INSTALLATION.
 2. MB HYDRO INSPECTION AND APPROVAL OF ALL UNDERGROUND CONDUIT, TRANSFORMER PAD INSTALLATION, CSTE PLACEMENT, ALL FIBERGLASS BASES AND PRIOR TO ANY BACK FILLING.
 3. SUBMISSION OF THE CSTE ARRANGEMENT FOR SHOP DRAWING APPROVAL PRIOR TO PURCHASE AND INSTALLATION.
 4. THE ELECTRICAL SUBCONTRACTOR SHALL ARRANGE FOR MB HYDRO TO PROVIDE A NEW ELECTRICAL SERVICE UP TO THE NEW CSTE. THE ELECTRICAL SUBCONTRACTOR SHALL ARRANGE PAYMENT FOR THE NEW HYDRO SERVICE THROUGH THE PROJECT CASH ALLOWANCE. THE ELECTRICAL SUBCONTRACTOR SHALL FILL OUT AND SUBMIT THE MB HYDRO NEW SERVICE APPLICATION FORM.
 5. THE CSTE, METERING ENCLOSURE, MAIN BREAKER AND ALL CABBING FROM THE CSTE AND THE MAIN ELECTRICAL ROOM IS THE RESPONSIBILITY OF THE ELECTRICAL SUBCONTRACTOR AND SHALL BE CARRIED UNDER THEIR BASE CONTRACT PRICE. A CONTINUOUS WIREWAY FROM THE LOCKABLE METERING ENCLOSURE TO THE CTS (WITHIN THE CSTE) MUST BE INSTALLED BY THE ELECTRICAL SUBCONTRACTOR FOR MB HYDRO TO INSTALL THEIR METERING EQUIPMENT.
 6. ALL CONSTRUCTION POWER SHALL BE ARRANGED AND PAID FOR BY THE CONTRACTOR FOR THE DURATION OF THE CONSTRUCTION.
 7. THE ELECTRICAL SUBCONTRACTOR SHALL OBTAIN AND COORDINATE ALL CIVIL DRAWINGS PRIOR TO ANY SITE WORKS. THIS SHALL INCLUDE BUT NOT BE LIMITED TO CONFIRMING AND COORDINATION EXACT LOCATIONS OF ALL EXISTING UNDERGROUND AND OVERHEAD SERVICE LINES ON THE SITE BEFORE PROCEEDING WITH THE NEW INSTALLATION.
 8. THE ELECTRICAL SUBCONTRACTOR SHALL ARRANGE TO HAVE MB HYDRO RELOCATE THE EXISTING MB HYDRO POLE AS INDICATED ON THE SITE PLAN.
 9. THE ELECTRICAL SUBCONTRACTOR SHALL ARRANGE TO HAVE MB HYDRO PROVIDE ROADWAY LIGHTING ON THE EXTENSION OF MISSION STREET.
- SERVICING NOTES:**
1. EXACT LOCATION OF ALL HYDRO AND TELEPHONE ENTRANCE SERVING BOTH ON SITE AND OFF TO BE CONFIRMED WITH MB HYDRO. MTS DIRECTLY BEFORE ANY INSTALLATION CAN PROCEED.
 2. THE ELECTRICAL SUBCONTRACTOR TO OBTAIN APPROVED PERMITS FROM LOCAL GAS COMPANY AND CONTACT THEIR INSPECTION DEPARTMENT PRIOR TO UNDER TAKING ANY EXCAVATIONS. FAILURE TO DO SO MAY BE AN OFFENSE UNDER THE PROVINCIAL GAS ACT.
 3. EACH PROJECT WILL BE EVALUATED AT THE TIME OF DESIGN AS TO WHETHER CONCRETE ENCASUREMENT WILL BE REQUIRED. THE ELECTRICAL SUBCONTRACTOR TO CONFIRM EXACT REQUIREMENTS WITH MB HYDRO AND ADJUST TO SUIT. ALL COSTS TO BE INCLUDED IN BASE TENDER QUOTE

CHECK BEFORE YOU DIG

CONTACT LOCAL GAS, HYDRO & RELEVANT AUTHORITIES PRIOR TO ANY EXCAVATION WORK ON SITE. DAMAGING GAS PIPES IS DANGEROUS AND COSTLY.

UNDERGROUND CONDUCTORS

CIRCUIT I.D.	PNL+CGT
YEAR INSTALLED	2017
DIAGRAM	XX-X
DETAIL	YY
TABLE	ZZ
SIZE/TYPE OF CONDUCTOR	XC #X AWG CABLE TYPE
AMPACITY	naA
MAX. OVERCURRENT	

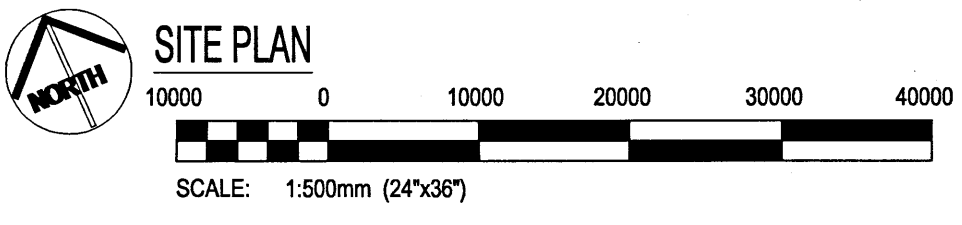
ALL UNDERGROUND CONDUCTOR INSTALLATIONS SHALL BE IDENTIFIED WITH A LABEL INDICATING THE CODE YEAR TO WHICH THE INSTALLATION WAS DESIGNED INCLUDING THE JIG DETAIL AND TABLE UTILIZED TO ACHIEVE THE RATED AMPACITY OF THE BEEE CALCULATION. MARKING OF EQUIPMENT SERVICED BY UNDERGROUND INSTALLATION OF #10 AWG AND LARGER SHALL BE IDENTIFIED WITH A PERMANENTLY SECURED LAMACOID LABEL (MINIMUM SIZE: 80X130MM) POSTED ON OR NEAR EACH SERVICE OR OVERCURRENT SUPPLYING EQUIPMENT INDICATING THE ITEMS SHOWN ON LABEL.

CIVIC ADDRESS

- 429 PANET ROAD, WINNIPEG, MB

LEGAL DESCRIPTION

- PART LOT 74, OTM, ST. BONIFACE
- PART LOT 75, OTM, ST. BONIFACE



LOCATION APPROVED UNDERGROUND STRUCTURES

SUPV. U/G STRUCTURES COMMITTEE DATE

NOTE: LOCATION OF UNDERGROUND STRUCTURES AS SHOWN ARE BASED ON THE BEST INFORMATION AVAILABLE BUT NO GUARANTEE IS GIVEN THAT ALL EXISTING UTILITIES ARE SHOWN OR THAT THE GIVEN LOCATIONS ARE EXACT. CONFIRMATION OF EXISTENCE AND EXACT LOCATION OF ALL SERVICES MUST BE OBTAINED FROM THE INDIVIDUAL UTILITIES BEFORE PROCEEDING WITH CONSTRUCTION.

B.M. ELEV.			
0	ISSUED FOR TENDER	17/03/14	CLS
NO.	REVISIONS	DATE	BY

KGS GROUP CONSULTING ENGINEERS

DESIGNED BY	CLS	CHECKED BY	CLS
DRAWN BY	SDC	APPROVED BY	CLS
HOR. SCALE:	AS NOTED	RELEASED FOR CONSTRUCTION:	
VERTICAL:	AS NOTED	DATE	
	16/08/17		

ENGINEER'S SEAL

CONSULTANT PROJECT NO.
16-0107-010

THE CITY OF WINNIPEG WATER AND WASTE DEPARTMENT

Winnipeg

PROJECT TITLE
4R WINNIPEG DEPOT
EAST WINNIPEG COMMUNITY RESOURCE RECOVERY CENTRE

ELECTRICAL SITE PLAN

SHEET	27	OF	41
COMPUTER FILE NAME	16-0107-010		
CONSULTANT DRAWING NUMBER	E02		

APEGM
Certificate of Authorization
KGS Group
No. 245