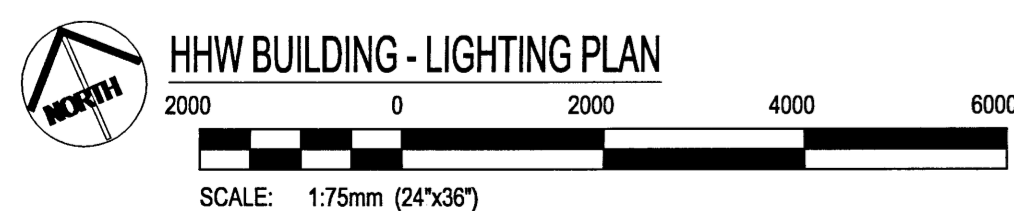
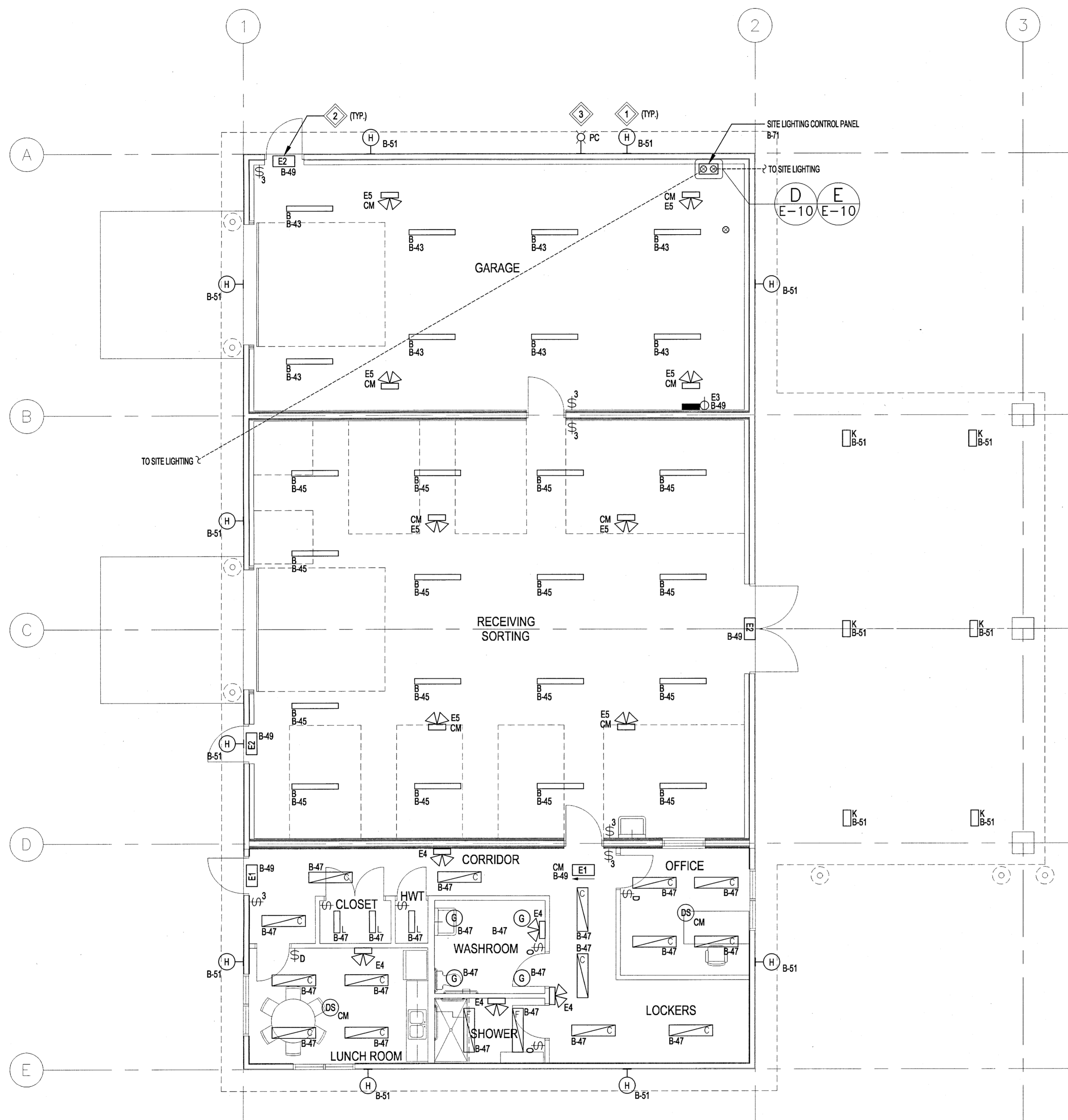


**KEY PLAN**  
SCALE: N.T.S.

**KEYNOTES:**

- 1 MOUNT THE TYPE H22 FIXTURES CENTERED AT ELEVATION 103.7m. REFER TO STRUCTURAL ELEVATIONS ON DRAWING 16-0107-010\_B03 FOR THE EXACT LOCATIONS.
- 2 THE ELECTRICAL SUBCONTRACTOR SHALL CONNECT THE EXIT LIGHTS TO NORMAL AND EMERGENCY POWER.
- 3 MOUNT THE PHOTOCELL AT ELEVATION 104.87m.



**LOCATION APPROVED UNDERGROUND STRUCTURES**

SUPV. U/G STRUCTURES COMMITTEE DATE

NOTE:  
LOCATION OF UNDERGROUND STRUCTURES AS SHOWN ARE BASED ON THE BEST INFORMATION AVAILABLE BUT NO GUARANTEE IS GIVEN THAT ALL EXISTING UTILITIES ARE SHOWN OR THAT THE GIVEN LOCATIONS ARE EXACT. CONFIRMATION OF EXISTENCE AND EXACT LOCATION OF ALL SERVICES MUST BE OBTAINED FROM THE INDIVIDUAL UTILITIES BEFORE PROCEEDING WITH CONSTRUCTION.

B.M. ELEV.	NO.	REVISIONS	DATE	BY
	0	ISSUED FOR TENDER	17/03/14	CLS



DESIGNED BY: CLS  
DRAWN BY: SOC  
HOR. SCALE: AS NOTED  
VERTICAL: AS NOTED

CHECKED BY: *OS*  
APPROVED BY: *CLS*  
RELEASED FOR CONSTRUCTION: \_\_\_\_\_  
DATE: 16/08/17

ENGINEER'S SEAL  
*C. SARAS*  
Member 32618  
REGISTERED PROFESSIONAL ENGINEER

**Winnipeg** THE CITY OF WINNIPEG WATER AND WASTE DEPARTMENT

PROJECT TITLE: 4R WINNIPEG DEPOT EAST WINNIPEG COMMUNITY RESOURCE RECOVERY CENTRE

CONSULTANT PROJECT NO.: 16-0107-010

HHW BUILDING - LIGHTING PLAN

SHEET 30 OF 41  
COMPUTER FILE NAME: 16-0107-010  
CONSULTANT DRAWING NUMBER: E05