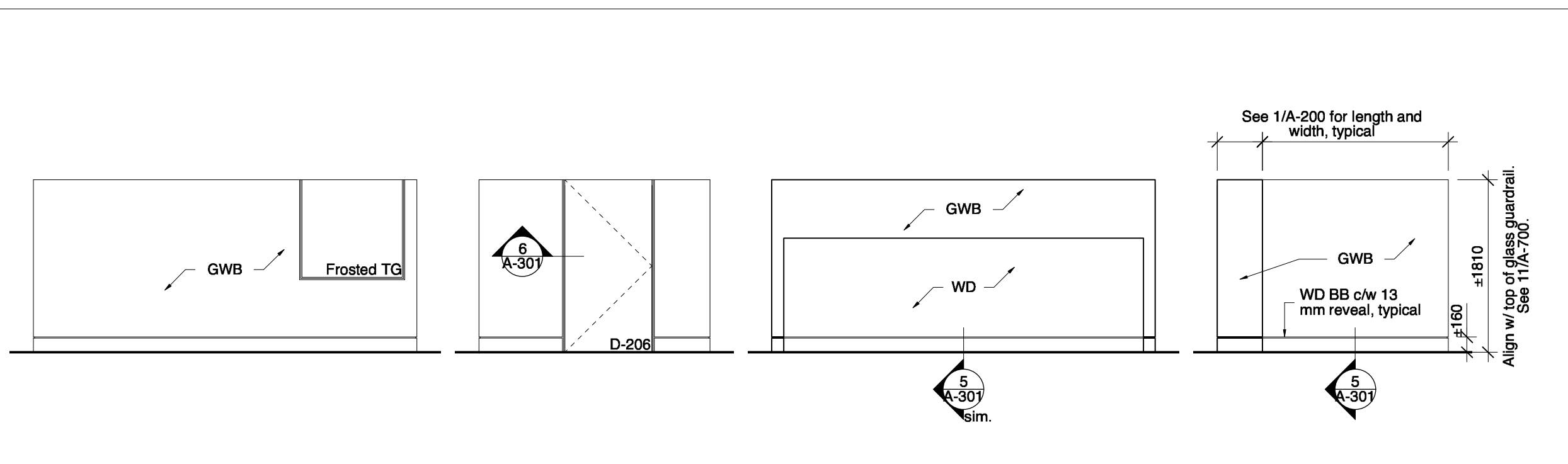
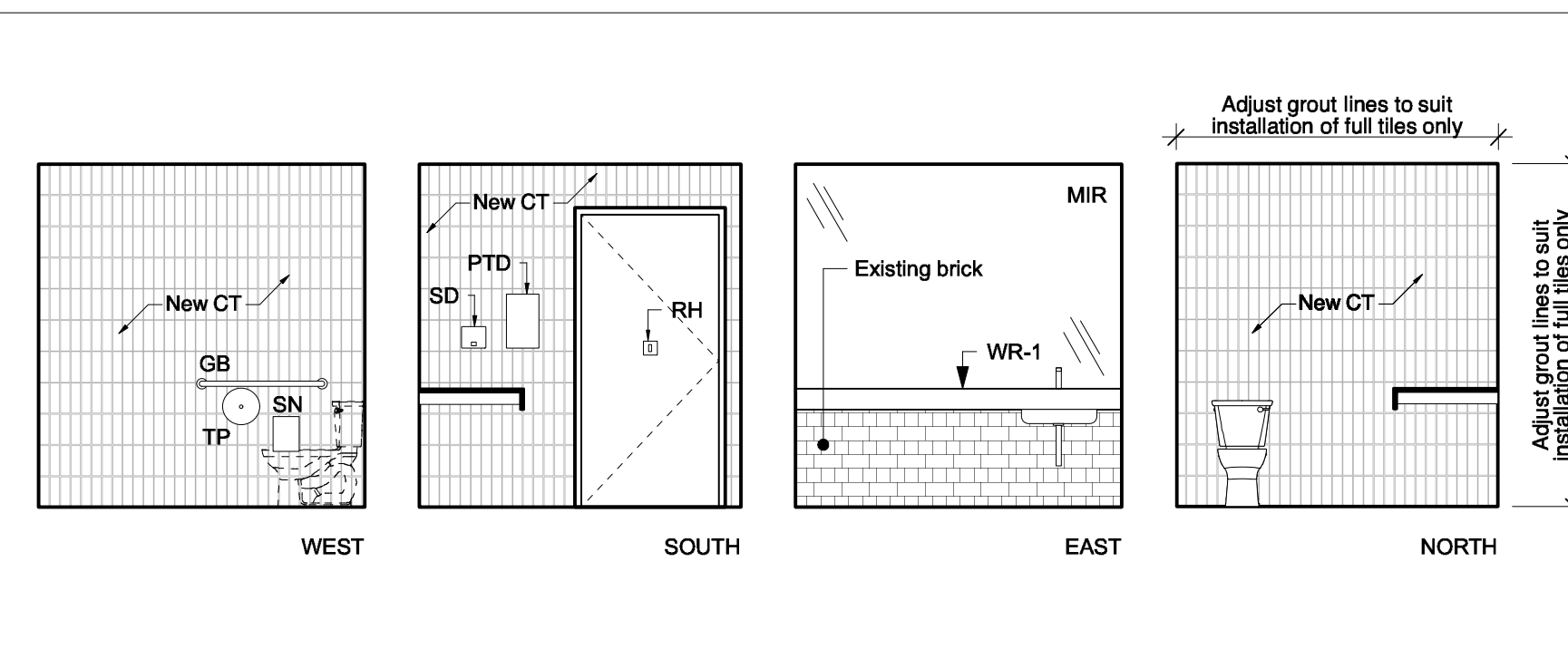


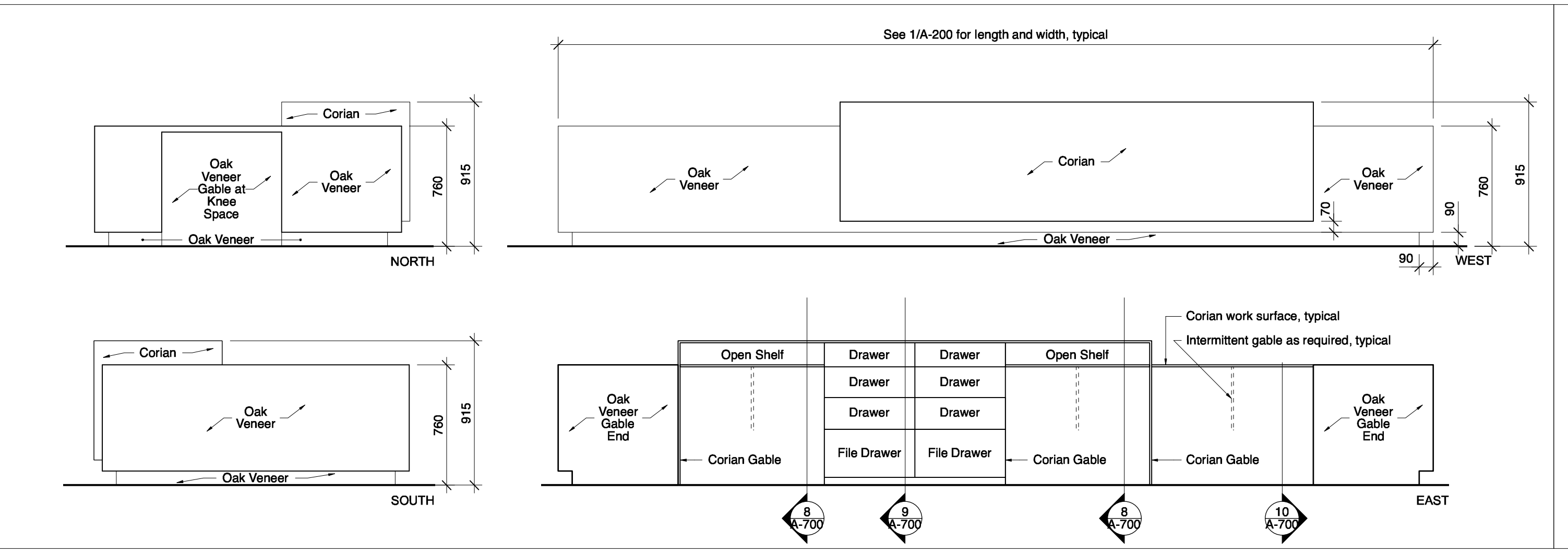
11 Glass Guard at Dumbwater  
Scale: 1:50



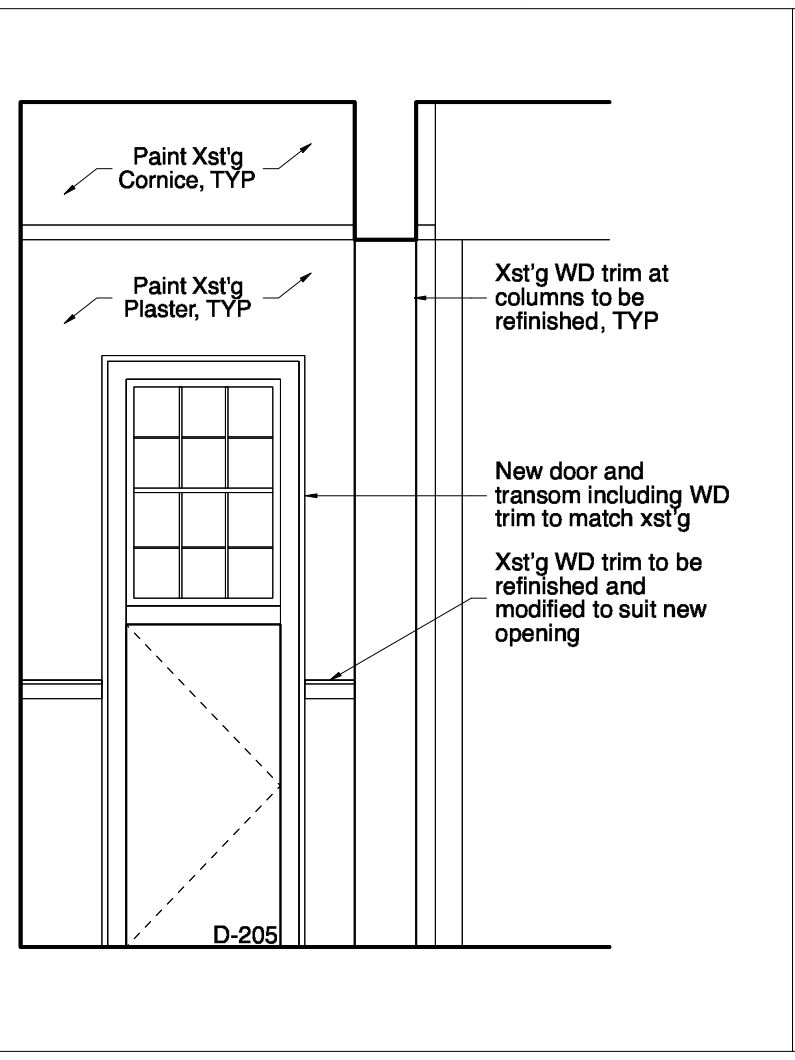
7 Office 206  
Scale: 1:50



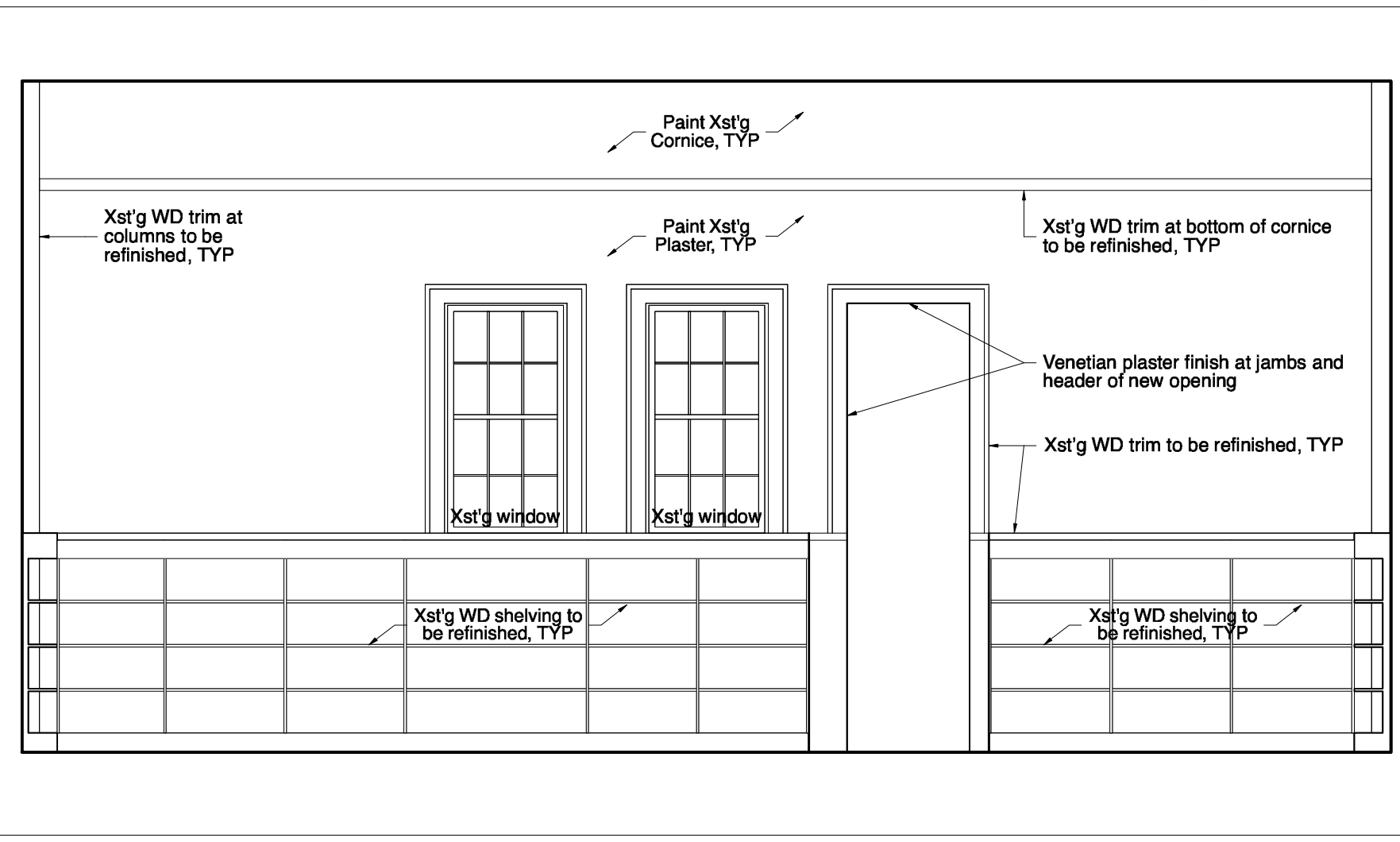
4 UTR 202  
Scale: 1:50



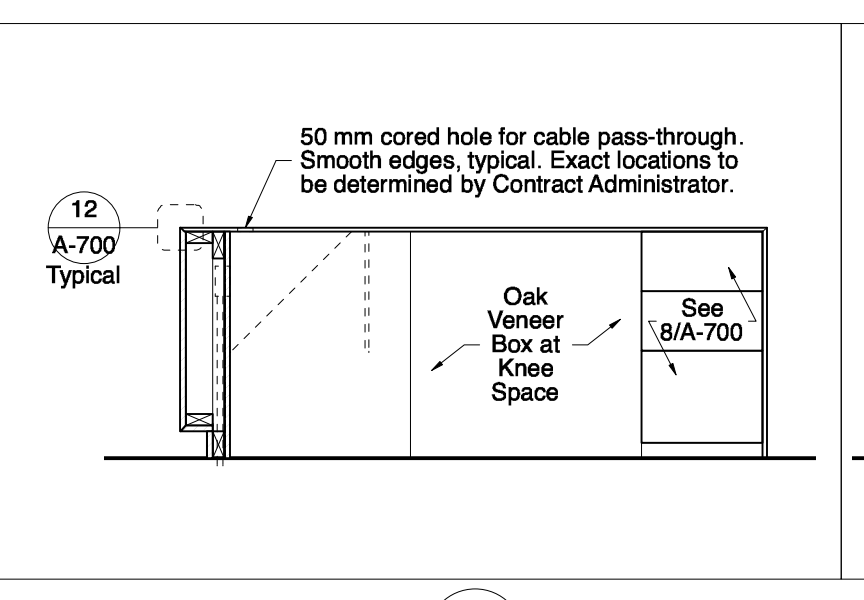
6 Circulation Desk Elevations  
Scale: 1:25



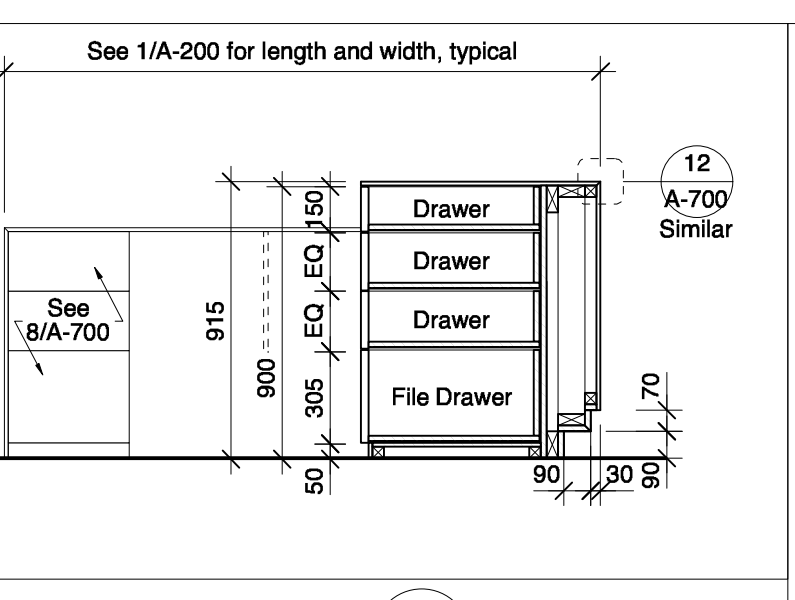
5 Exit from Computer Area 205  
Scale: 1:50



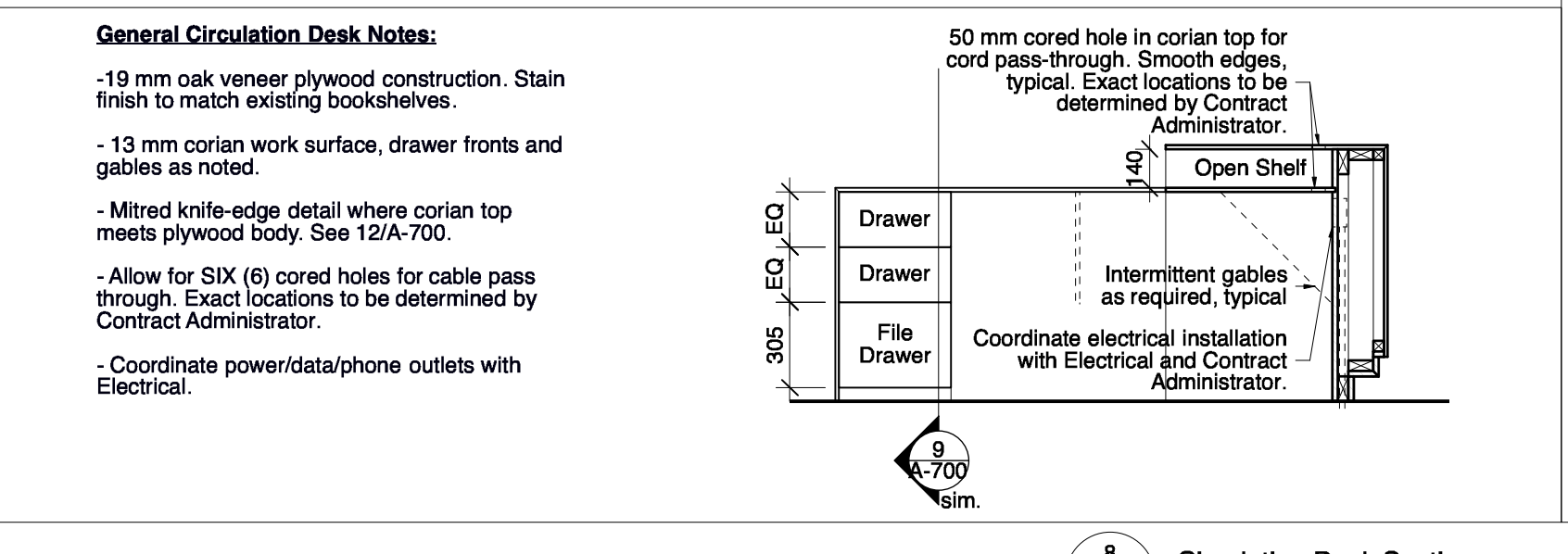
3 Main Level Stacks 204  
Scale: 1:50



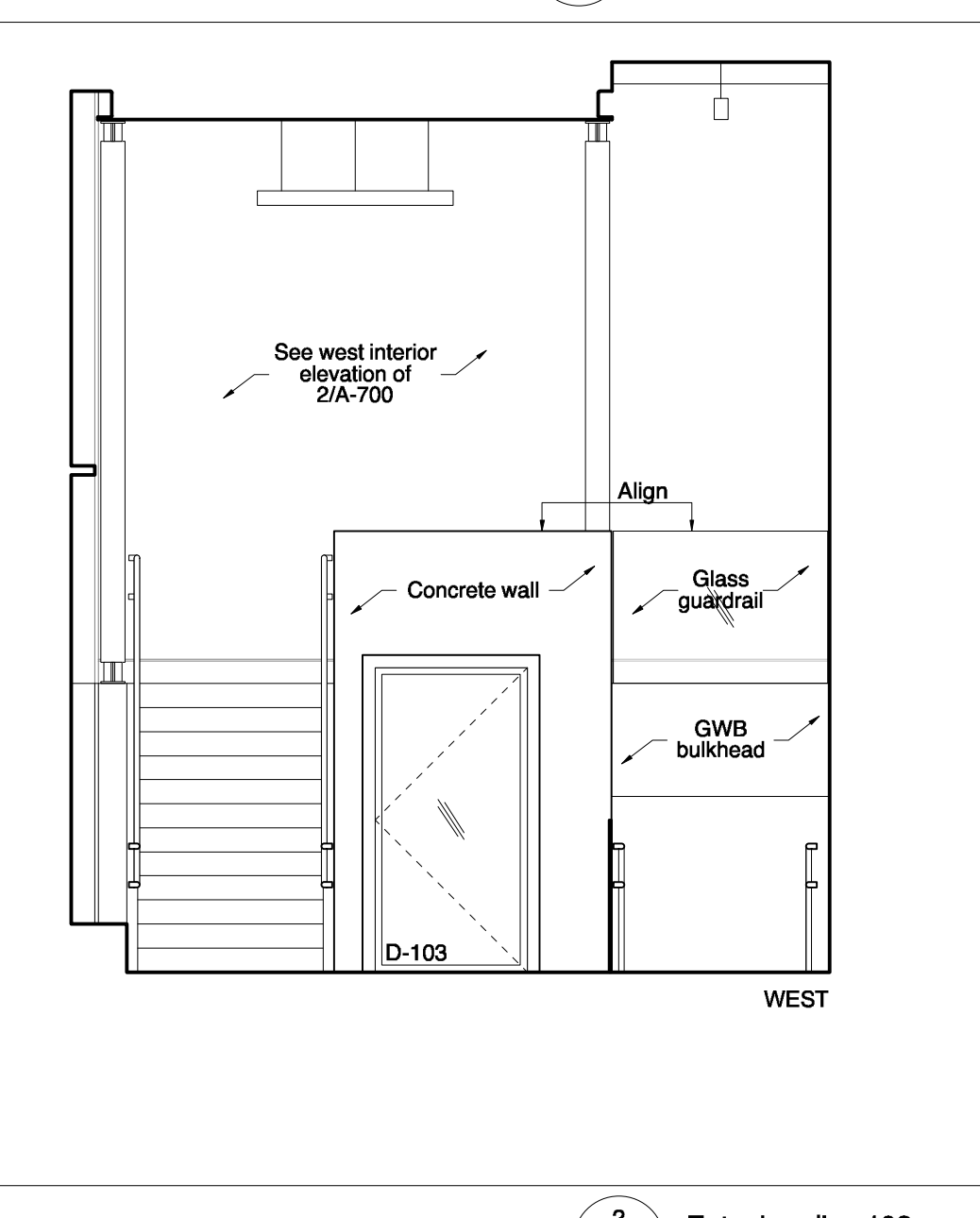
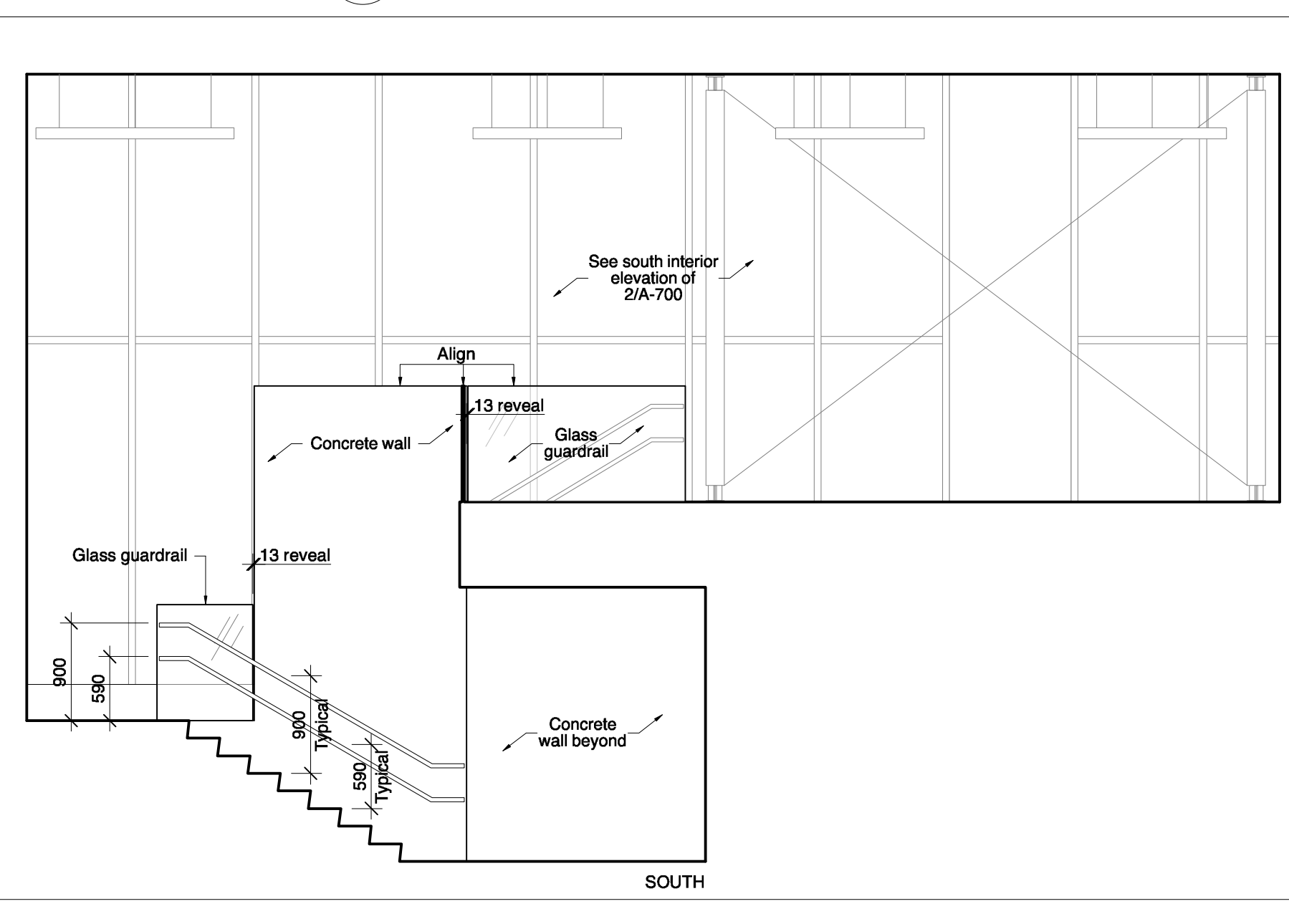
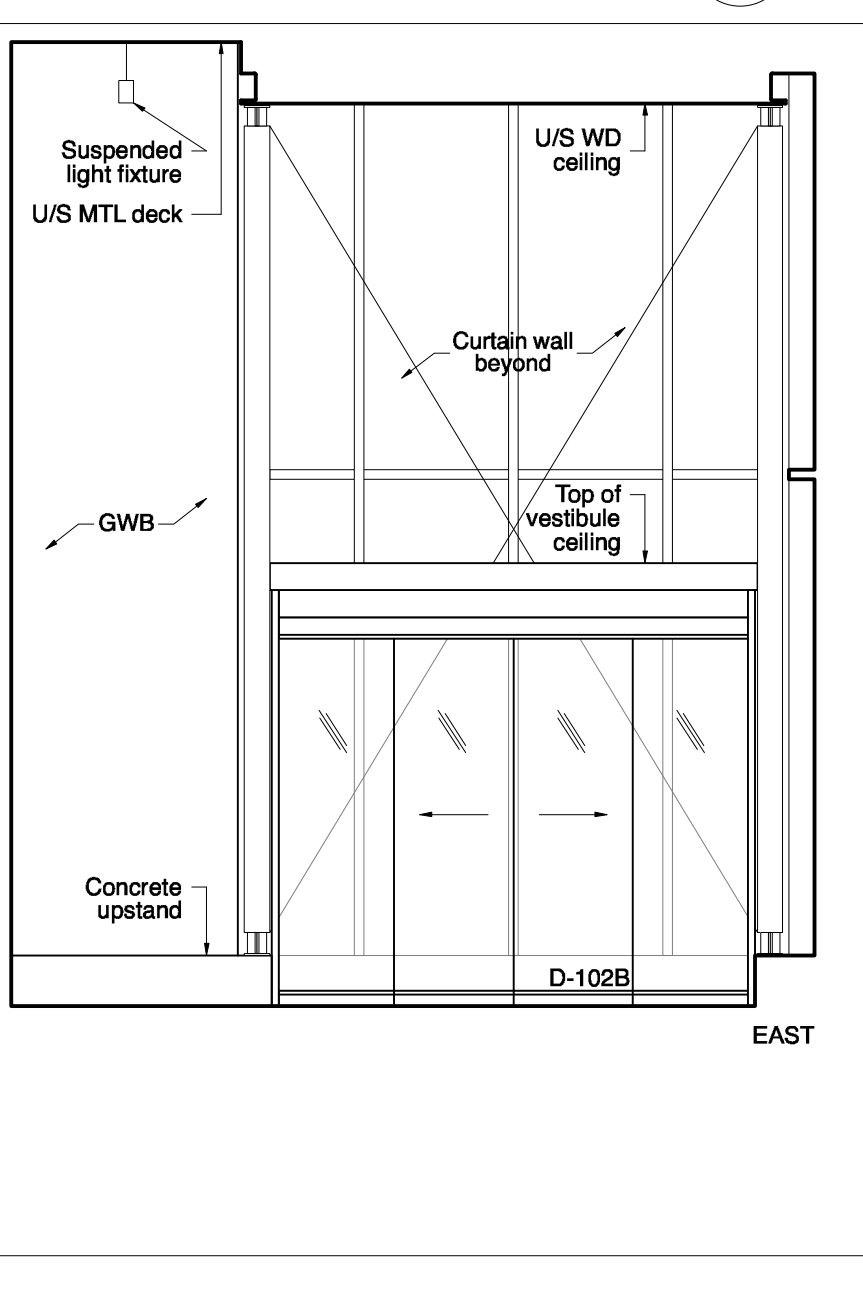
12 Circulation Desk  
Scale: 1:25



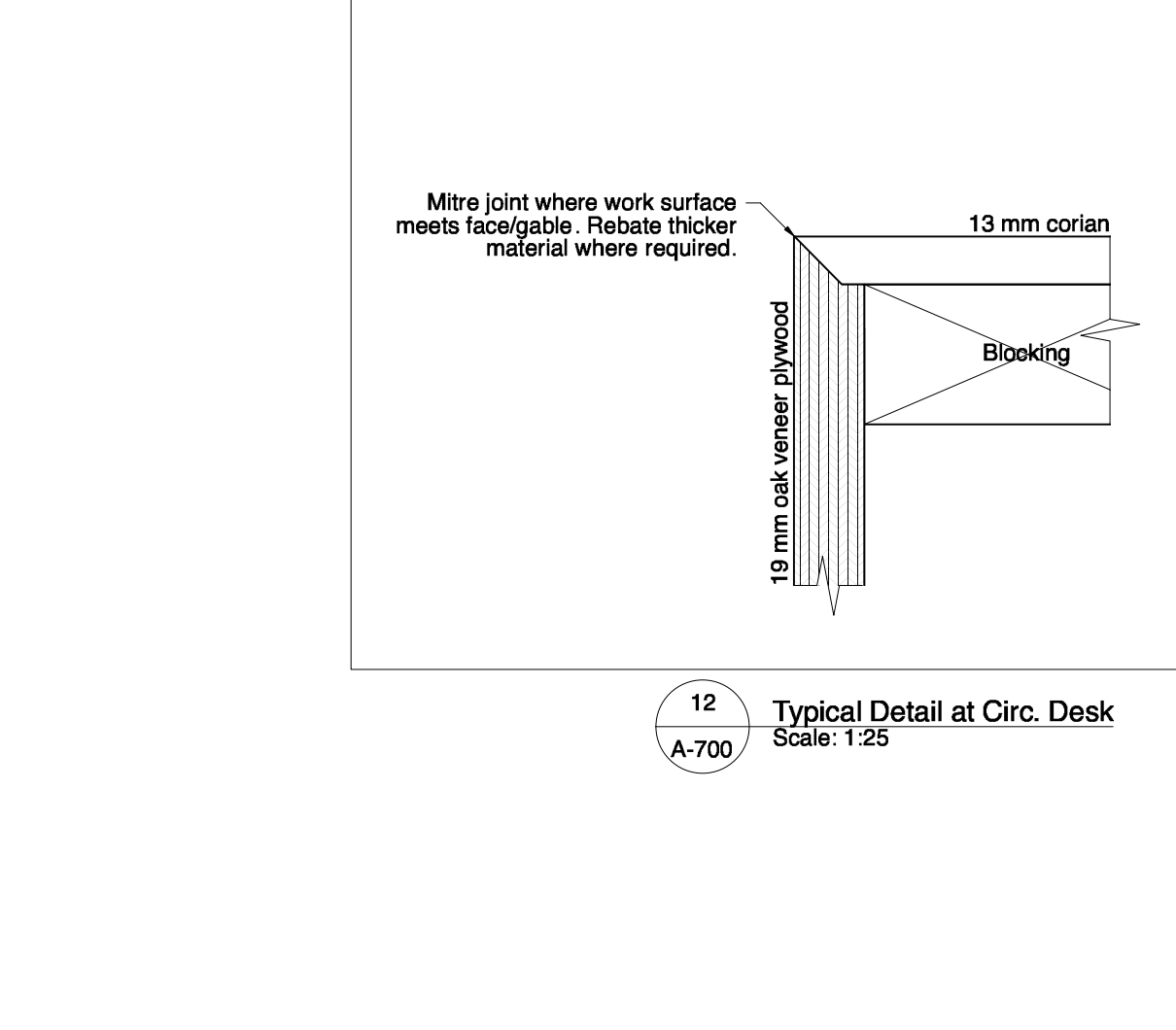
9 Circulation Desk  
Scale: 1:25



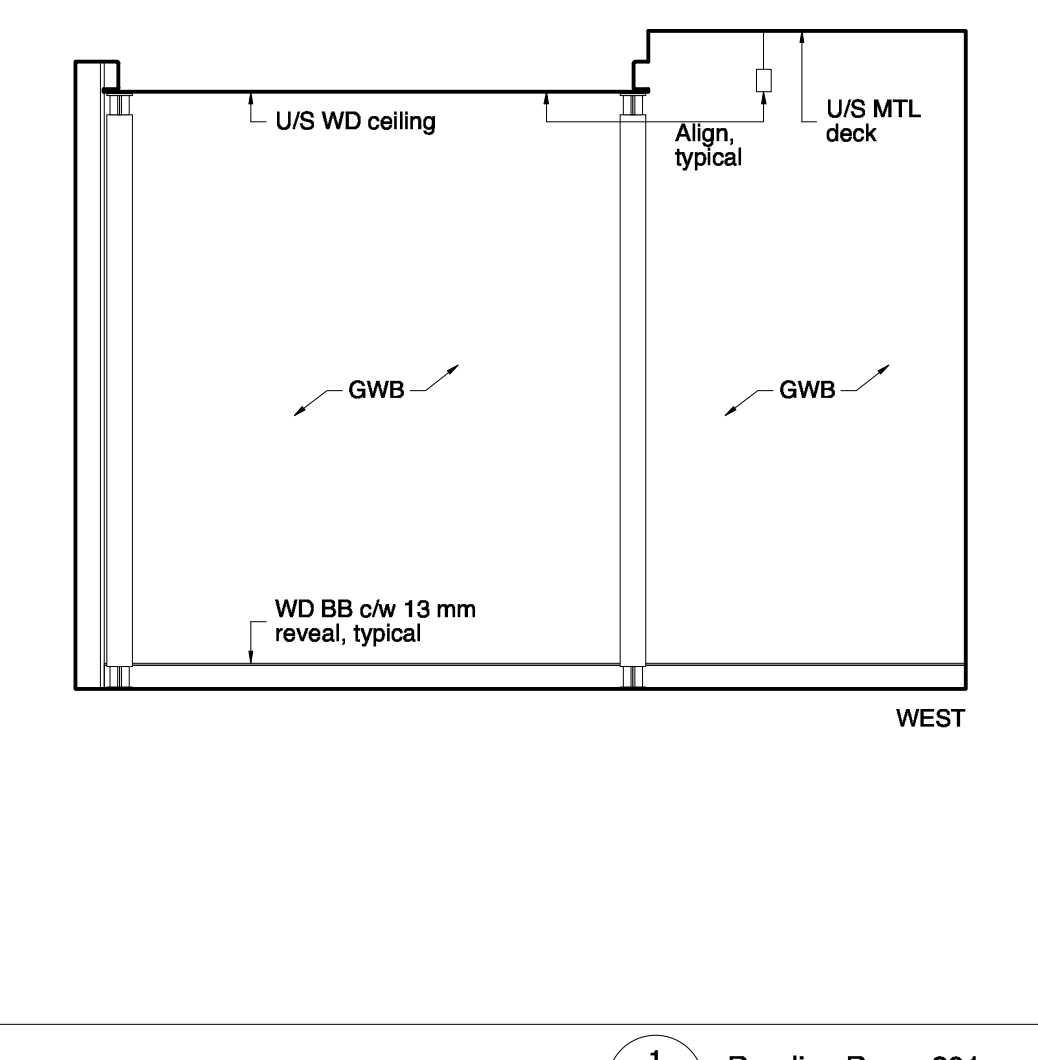
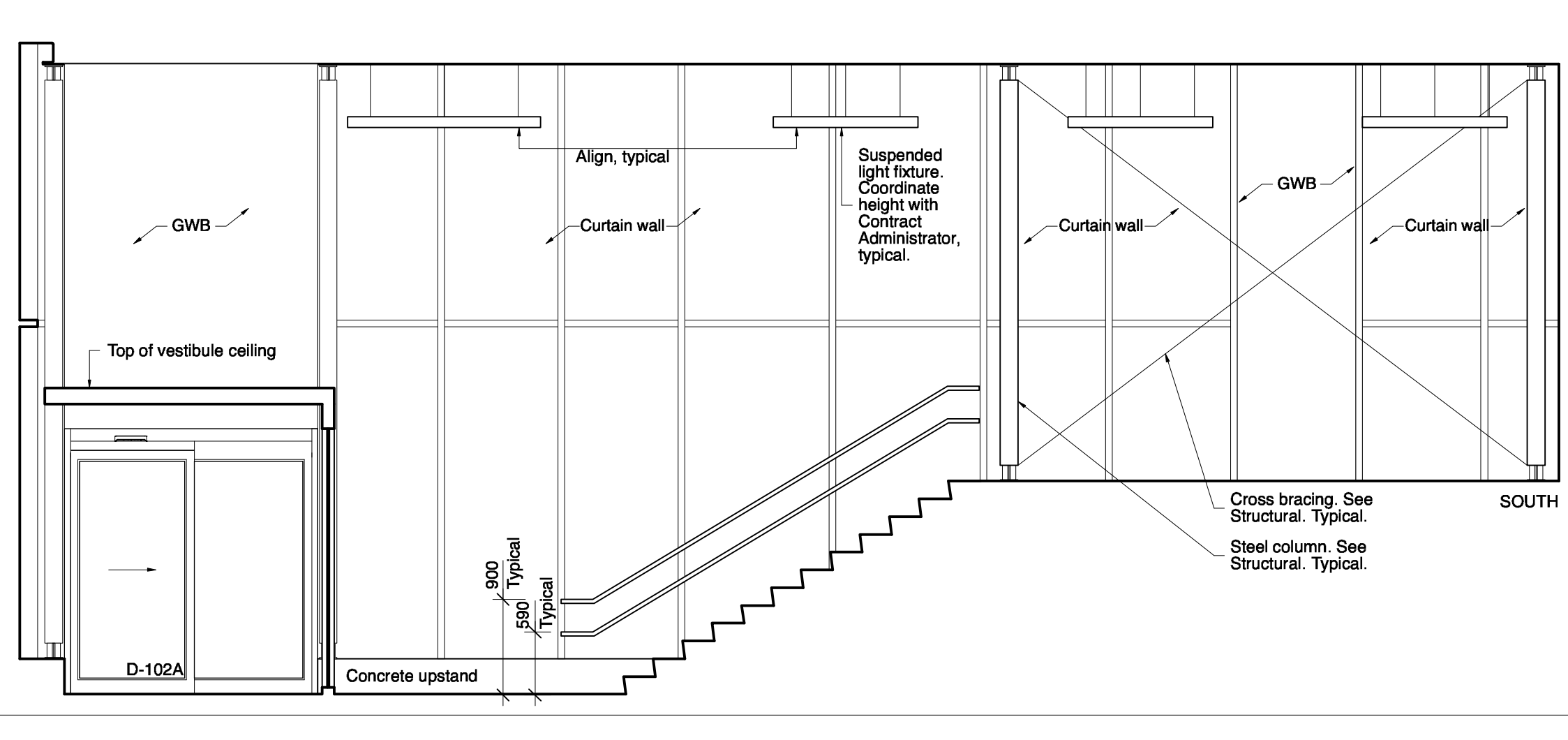
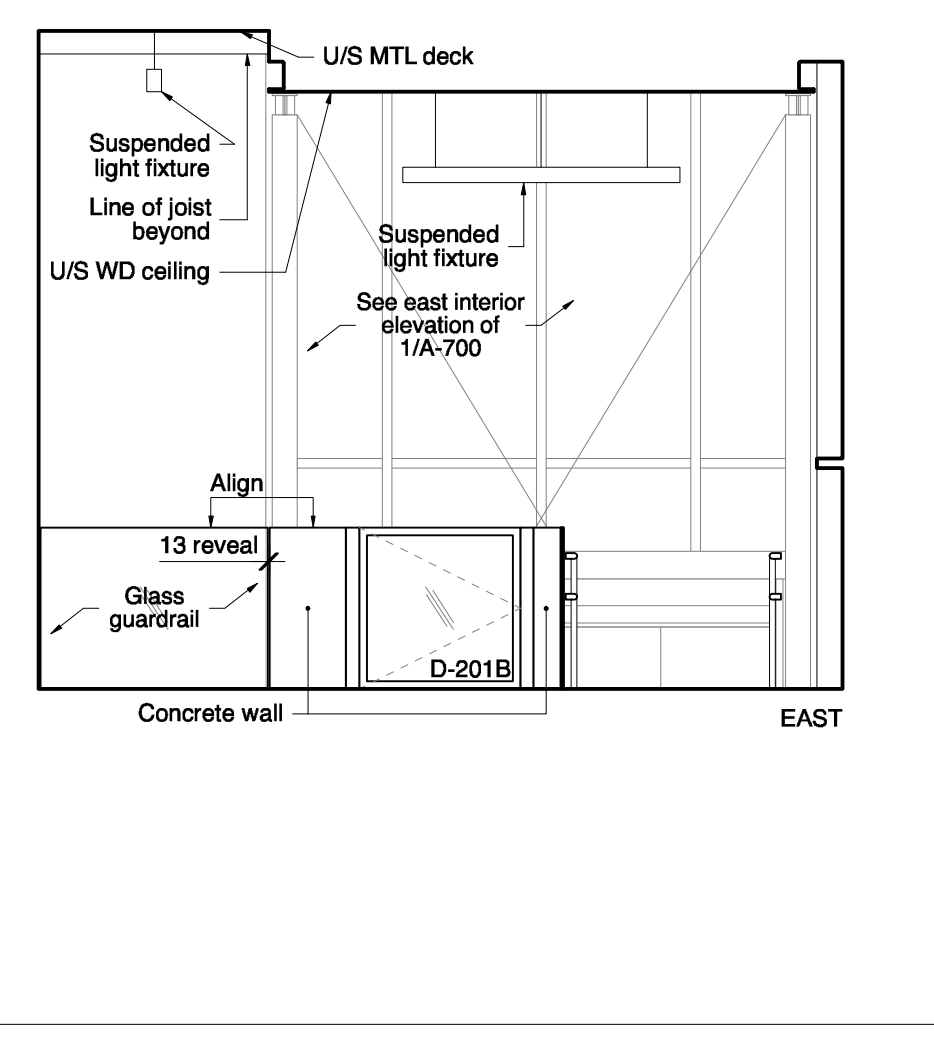
8 Circulation Desk Sections  
Scale: 1:25



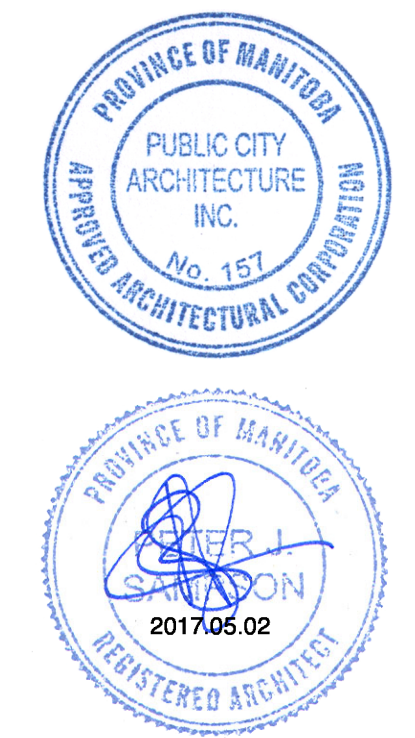
2 Entry Landing 103  
Scale: 1:50



12 Typical Detail at Circ. Desk  
Scale: 1:25



1 Reading Room 201  
Scale: 1:50



This drawing must not be scaled. The contractor shall verify all dimensions and other data on site prior to commencement of work. Discrepancies, errors, and omissions are to be reported to Public City Architecture Inc. prior to proceeding with the Work.

Drawings and specifications as instruments of service are the property of Public City Architecture Inc. and when made, must bear their name. All prints to be returned to Public City Architecture Inc. upon request.

Project  
St. John's Library Renovation

Drawing  
Interior Elevations, Millwork Details

Drawn By  
NJ, DB  
Scale  
As Noted

Reviewed By  
PS  
Drawing No.  
A-700

Date  
2016.07.18

Project No.  
1503b