

ALL WATER SERVICES WITHIN THE LIMITS OF THE RECONSTRUCTION SHALL BE INSULATED AS PER SPECIFICATION E-10

PLAN :

- CONSTRUCTION NOTES**
- 1) CURB REPLACEMENT AS DIRECTED BY THE CONTRACT ADMINISTRATOR.
 - 2) ALL STREET RADIUS CURB UNDER 15M RADIUS SHALL BE REPLACED AS MODIFIED OR AS DIRECTED BY THE CONTRACT ADMINISTRATOR.
 - 3) INSTALL DETECTIBLE WARNING SURFACE TILES AT CURB RAMP AS PER CW-3326

WARNING

IF POWER EQUIPMENT OR EXPLOSIVES ARE TO BE USED FOR EXCAVATION ON THIS PROJECT THE CONTRACTOR MUST:

- 1) OBTAIN CLEARANCE FROM THE GAS UTILITY PRIOR TO EXCAVATION.
- 2) TAKE PRECAUTION TO AVOID DAMAGE TO GAS UTILITY INSTALLATIONS.

SEE PROVINCIAL REGULATION 210/72 FOR DETAILS

METRIC
WHOLE NUMBERS INDICATE MILLIMETRES
DECIMALIZED NUMBERS INDICATE METRES

BID OPPORTUNITY NO. 4-2017

⊕	HYDRANT	◆	---	LDS/WWS	---	CONCRETE	
⊕	VALVE	●	---	WATERMAIN	---	CONCRETE SIDEWALK	
⊕	CURB STOP	●	---	GAS	---	ASPHALT	
⊕	MANHOLE	●	---	TRAFFIC SIGNALS	---	BRICK	
⊕	CATCH BASIN	■	---	HYDRO/STREET LIGHT	---	CONCRETE PAVERS	
⊕	CURB INLET	▲	---	MTS	---	FENCE	
⊕	HYDRO POLE	●	---	CURB RENEWAL	---	EXISTING	---
⊕	LIGHT STANDARD	●	---	PROPERTY LINE	---	PROPOSED	---
⊕	TRAFFIC SIGNAL POLE	●	---	RAMP CURB	---	NORTH GUTTER	---
⊕	SURVEY BAR	◆	---	ELEVATIONS	(231.000)	CENTER LINE	---
⊕	TEST HOLE	⊕	---	TREE	---	SOUTH GUTTER	---
⊕	EXISTING	---	---	LEGEND - PLAN	---	PROPOSED	---

LOCATION APPROVED UNDERGROUND STRUCTURES

DATE

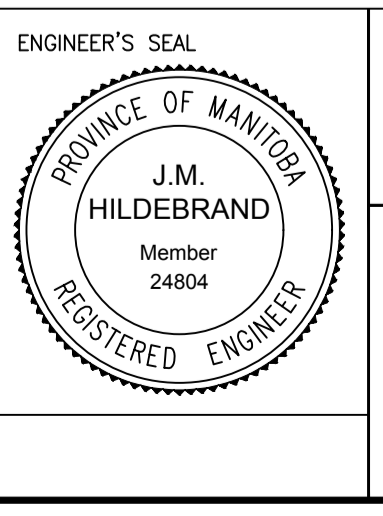
NOTE:
LOCATION OF UNDERGROUND STRUCTURES AS SHOWN ARE BASED ON THE BEST INFORMATION AVAILABLE. BUT NO GUARANTEE IS GIVEN THAT ALL EXISTING UTILITIES ARE SHOWN OR THAT THE GIVEN LOCATIONS ARE EXACT. CONFIRMATION OF EXISTENCE AND EXACT LOCATION OF ALL SERVICES MUST BE OBTAINED FROM THE INDIVIDUAL UTILITIES BEFORE PROCEEDING WITH CONSTRUCTION.

B.M. IB @ SW CORNER OF 1103 ALEXANDER ELEV. 231.990			
DESIGNED BY	E.H. & M.D.	CHECKED BY	R.W.
DRAWN BY	E.H. & M.D.	APPROVED BY	M.H.
3. ADDENDUM 1	17/04/12	T.K.	
2. SUBMIT FOR ENGINEERS APPROVAL	17/04/05	T.K.	
1. SUBMIT FOR PLAN APPROVAL	17/02/23	M.D.	
NO. REVISIONS	DATE	BY	DATE
			2017/04/12

ENGINEERING DIVISION
TECHNOLOGY SERVICES BRANCH
106 - 1155 PACIFIC AVE

DESIGNED BY E.H. & M.D. CHECKED BY R.W.
DRAWN BY E.H. & M.D. APPROVED BY M.H.

HOR. SCALE: 1 : 250
VERTICAL: 1 : 10



THE CITY OF WINNIPEG
PUBLIC WORKS DEPARTMENT

ALEXANDER AVENUE
FROM McPHILLIPS ST TO YEOMANS ST
CONCRETE RECONSTRUCTION AND ASSOCIATED WORKS
FROM STA. 2+50 TO STA. 3+18.4

CITY DRAWING NUMBER SE-17-15
SHEET 4 OF 13

2