

**PRELIMINARY**  
NOT TO BE USED FOR CONSTRUCTION

ALL WATER SERVICES WITHIN THE LIMITS OF THE RECONSTRUCTION SHALL BE INSULATED AS PER SPECIFICATION E-10

PLAN:

**CONSTRUCTION NOTES**

- CURB REPLACEMENT AS DIRECTED BY THE CONTRACT ADMINISTRATOR.
- ALL STREET RADIUS CURB UNDER 15M RADIUS SHALL BE REPLACED AS MODIFIED OR AS DIRECTED BY THE CONTRACT ADMINISTRATOR.
- INSTALL DETECTABLE WARNING SURFACE TILES AT CURBS RAMP AS PER CW-3326

**WARNING**

IF POWER EQUIPMENT OR EXPLOSIVES ARE TO BE USED FOR EXCAVATION ON THIS PROJECT THE CONTRACTOR MUST:

- OBTAIN CLEARANCE FROM THE GAS UTILITY PRIOR TO EXCAVATION.
- TAKE PRECAUTION TO AVOID DAMAGE TO GAS UTILITY INSTALLATIONS.

SEE PROVINCIAL REGULATION 210/72 FOR DETAILS

METRIC  
WHOLE NUMBERS INDICATE MILLIMETRES  
DECIMALIZED NUMBERS INDICATE METRES

BID OPPORTUNITY NO. 4-2017

HYDRANT	↑	LDS/WWS	---	CONCRETE	
VALVE	●	WATERMAIN	---	CONCRETE SIDEWALK	
CURB STOP	■	GAS	---	ASPHALT	
MANHOLE	○	TRAFFIC SIGNALS	---	BRICK	
CATCH BASIN	□	HYDRO/STREET LIGHT	---	CONCRETE PAVERS	
CURB INLET	▲	MTS	---	FENCE	
HYDRO POLE	⊙	CURB RENEWAL	---	EXISTING	LEGEND - PLAN
LIGHT STANDARD	⊙	PROPERTY LINE	---	PROPOSED	LEGEND - PROFILE
TRAFFIC SIGNAL POLE	⊙	RAMP CURB	---	NORTH GUTTER	---
SURVEY BAR	+	ELEVATIONS	(231.000)	CENTER LINE	---
TEST HOLE	⊙	TREE	---	SOUTH GUTTER	---
EXISTING	LEGEND - PLAN	PROPOSED	EXISTING	LEGEND - PLAN	PROPOSED

LOCATION APPROVED UNDERGROUND STRUCTURES

SUPR. U/G STRUCTURES COMMITTEE DATE

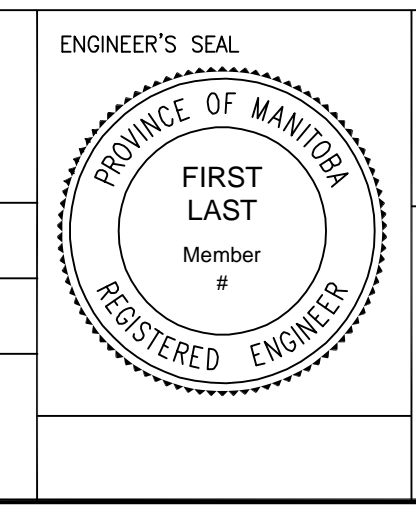
NOTE: LOCATION OF UNDERGROUND STRUCTURES AS SHOWN ARE BASED ON THE BEST INFORMATION AVAILABLE. BUT NO GUARANTEE IS GIVEN THAT ALL EXISTING UTILITIES ARE SHOWN OR THAT THE GIVEN LOCATIONS ARE EXACT. CONFIRMATION OF EXISTENCE AND EXACT LOCATION OF ALL SERVICES MUST BE OBTAINED FROM THE INDIVIDUAL UTILITIES BEFORE PROCEEDING WITH CONSTRUCTION.

B.M. ELEV.	IB @ SW CORNER OF 1153 ALEXANDER	231.914
DESIGNED BY	E.H. & M.D.	CHECKED BY R.W.
DRAWN BY	E.H. & M.D.	APPROVED BY
HOR. SCALE:	1 : 250	
VERTICAL:	1 : 10	
DATE	2017/04/03	

**ENGINEERING DIVISION**  
**TECHNOLOGY SERVICES BRANCH**  
106 - 1155 PACIFIC AVE

DESIGNED BY: E.H. & M.D.  
CHECKED BY: R.W.  
DRAWN BY: E.H. & M.D.  
APPROVED BY:

HOR. SCALE: 1 : 250  
VERTICAL: 1 : 10  
DATE: 2017/04/03



**THE CITY OF WINNIPEG**  
PUBLIC WORKS DEPARTMENT

**ALEXANDER AVENUE**  
FROM McPHILLIPS ST TO YEOMANS ST  
CONCRETE RECONSTRUCTION AND ASSOCIATED WORKS  
FROM STA. 0+96.2 TO STA. 2+50

CITY DRAWING NUMBER SE-17-14  
SHEET 3 OF 13  
1