

PRELIMINARY
NOT TO BE USED FOR CONSTRUCTION

ALL WATER SERVICES WITHIN THE LIMITS OF THE RECONSTRUCTION SHALL BE INSULATED AS PER SPECIFICATION E-10

PLAN :

- CONSTRUCTION NOTES**
- 1) CURB REPLACEMENT AS DIRECTED BY THE CONTRACT ADMINISTRATOR.
 - 2) ALL STREET RADIUS CURB UNDER 15M RADIUS SHALL BE REPLACED AS MODIFIED OR AS DIRECTED BY THE CONTRACT ADMINISTRATOR.
 - 3) INSTALL DETECTIBLE WARNING SURFACE TILES AT CURB RAMPS AS PER CW3326.

WARNING

IF POWER EQUIPMENT OR EXPLOSIVES ARE TO BE USED FOR EXCAVATION ON THIS PROJECT THE CONTRACTOR MUST:

- 1) OBTAIN CLEARANCE FROM THE GAS UTILITY PRIOR TO EXCAVATION.
- 2) TAKE PRECAUTION TO AVOID DAMAGE TO GAS UTILITY INSTALLATIONS.

SEE PROVINCIAL REGULATION 210/72 FOR DETAILS

METRIC
WHOLE NUMBERS INDICATE MILLIMETRES
DECIMALIZED NUMBERS INDICATE METRES

BID OPPORTUNITY NO. 4-2017

⊕	HYDRANT	+	---	LDS/WWS	---	CONCRETE	
⊕	VALVE	•	---	WATERMAIN	---	CONCRETE SIDEWALK	
⊕	CURB STOP	•	---	GAS	---	ASPHALT	
⊕	MANHOLE	•	---	TRAFFIC SIGNALS	---	GRAVEL	
⊕	CATCH BASIN	•	---	HYDRO/STREET LIGHT	---	CONCRETE PAVERS	
⊕	CURB INLET	•	---	MTS	---	PAVING STONE	
⊕	HYDRO POLE	•	---	CURB RENEWAL	---	FENCE	
⊕	LIGHT STANDARD	•	---	PROPERTY LINE	---	LEGEND - PLAN	PROPOSED
⊕	TRAFFIC SIGNAL POLE	•	---	RAMP CURB	---	WEST GUTTER	---
⊕	SURVEY BAR	•	---	ELEVATIONS	---	CENTER LINE	---
⊕	TEST HOLE	•	---	TREE	---	EAST GUTTER	---
⊕	EXISTING	---	---	LEGEND - PLAN	PROPOSED	EXISTING	LEGEND - PROFILE
⊕	PROPOSED	---	---	LEGEND - PLAN	PROPOSED	EXISTING	LEGEND - PROFILE

LOCATION APPROVED
UNDERGROUND STRUCTURES

SUPR. U/G STRUCTURES DATE COMMITTEE

NOTE:
LOCATION OF UNDERGROUND STRUCTURES AS SHOWN ARE BASED ON THE BEST INFORMATION AVAILABLE. BUT NO GUARANTEE IS GIVEN THAT ALL EXISTING UTILITIES ARE SHOWN OR THAT THE GIVEN LOCATIONS ARE EXACT. CONFIRMATION OF EXISTENCE AND EXACT LOCATION OF ALL SERVICES MUST BE OBTAINED FROM THE INDIVIDUAL UTILITIES BEFORE PROCEEDING WITH CONSTRUCTION.

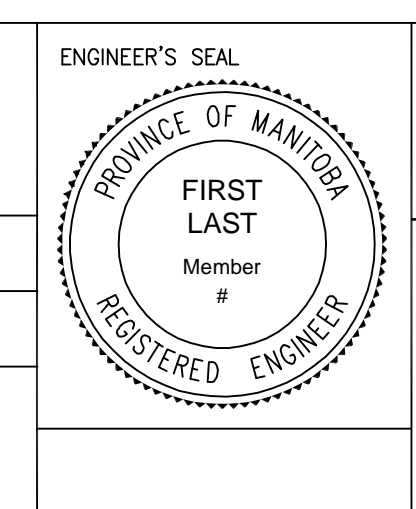
B.M. ELEV.	1.B. @ N.E. CORNER OF #706 MINTO ST.	232.140
NO.	REVISIONS	DATE BY
1.	SUBMIT FOR PLAN APPROVAL	17/02/23 T.K.

ENGINEERING DIVISION
TECHNOLOGY SERVICES BRANCH
106 - 1155 PACIFIC AVE

DESIGNED BY T.K. CHECKED BY R.W.
DRAWN BY T.K. APPROVED BY

HOR. SCALE: 1 : 250
VERTICAL: 1 : 10

DATE 2017/03/29



THE CITY OF WINNIPEG
PUBLIC WORKS DEPARTMENT

MINTO STREET
FROM WOLEVER AVENUE TO ST MATTHEWS AVENUE
ASPHALT RECONSTRUCTION AND ASSOCIATED WORKS
FROM STA. 3+50 TO STA. 4+63.7

CITY DRAWING NUMBER SE-17-19
SHEET 8 OF 13
3