

PRELIMINARY
NOT TO BE USED FOR CONSTRUCTION

ALL WATER SERVICES WITHIN THE LIMITS OF THE RECONSTRUCTION SHALL BE INSULATED AS PER SPECIFICATION E-10
PLAN :

CONSTRUCTION NOTES
1) CURB REPLACEMENT AS DIRECTED BY THE CONTRACT ADMINISTRATOR.
2) ALL STREET RADIUS CURB UNDER 15M RADIUS SHALL BE REPLACED AS MODIFIED OR AS DIRECTED BY THE CONTRACT ADMINISTRATOR.
3) INSTALL DETECTIBLE WARNING SURFACE TILES AT CURB RAMPS AS PER CW3326

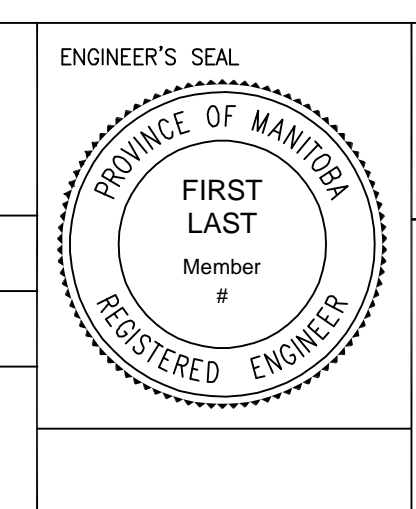
WARNING
IF POWER EQUIPMENT OR EXPLOSIVES ARE TO BE USED FOR EXCAVATION ON THIS PROJECT THE CONTRACTOR MUST:
1) OBTAIN CLEARANCE FROM THE GAS UTILITY PRIOR TO EXCAVATION.
2) TAKE PRECAUTION TO AVOID DAMAGE TO GAS UTILITY INSTALLATIONS.
SEE PROVINCIAL REGULATION 210/72 FOR DETAILS

HYDRANT	+	---	LDS/WWS	---	CONCRETE	
VALVE	●	---	WATERMAIN	---	CONCRETE SIDEWALK	
CURB STOP	■	---	GAS	---	ASPHALT	
MANHOLE	●	---	TRAFFIC SIGNALS	---	FENCE	
CATCH BASIN	■	---	HYDRO/STREET LIGHT	---		
CURB INLET	▲	---	MTS	---		
HYDRO POLE	●	---	CURB RENEWAL	---		
LIGHT STANDARD	●	---	PROPERTY LINE	---	EXISTING	LEGEND - PLAN
SURVEY BAR	+	---	RAMP CURB	---	PROPOSED	SOUTH GUTTER
TEST HOLE	⊕	---	ELEVATIONS	---		CENTER LINE
		---	TREE	---		NORTH GUTTER
EXISTING		---	LEGEND - PLAN	---	EXISTING	LEGEND - PROFILE
PROPOSED		---	PROPOSED	---	PROPOSED	PROPOSED

LOCATION APPROVED UNDERGROUND STRUCTURES
SUPR. U/G STRUCTURES DATE
NOTE: LOCATION OF UNDERGROUND STRUCTURES AS SHOWN ARE BASED ON THE BEST INFORMATION AVAILABLE. BUT NO GUARANTEE IS GIVEN THAT ALL EXISTING UTILITIES ARE SHOWN OR THAT THE GIVEN LOCATIONS ARE EXACT. CONFIRMATION OF EXISTENCE AND EXACT LOCATION OF ALL SERVICES MUST BE OBTAINED FROM THE INDIVIDUAL UTILITIES BEFORE PROCEEDING WITH CONSTRUCTION.

B.M. I.B. @ N.W. CORNER OF #1103 DOWNING ST. ELEV. 232.746
1. SUBMIT FOR PLAN APPROVAL 17/02/23 T.K.
NO. REVISIONS DATE BY

ENGINEERING DIVISION TECHNOLOGY SERVICES BRANCH 106 - 1155 PACIFIC AVE
DESIGNED BY T.K. CHECKED BY R.W.
DRAWN BY T.K. APPROVED BY
HOR. SCALE: 1:250
VERTICAL: 1:10
DATE 2017/03/29



BID OPPORTUNITY NO. 4-2017

THE CITY OF WINNIPEG
PUBLIC WORKS DEPARTMENT

SARGENT PARK PLACE
FROM DOMINION STREET TO DOWNING STREET
ASPHALT RECONSTRUCTION AND ASSOCIATED WORKS
FROM STA. 1+00 TO STA. 2+00

CITY DRAWING NUMBER SE-17-20
SHEET 9 OF 13
1