

**PRELIMINARY**  
NOT TO BE USED FOR CONSTRUCTION

ALL WATER SERVICES WITHIN THE LIMITS OF THE RECONSTRUCTION SHALL BE INSULATED AS PER SPECIFICATION E-10

PLAN :

**CONSTRUCTION NOTES**  
1) CURB REPLACEMENT AS DIRECTED BY THE CONTRACT ADMINISTRATOR.  
2) ALL STREET RADIUS CURB UNDER 15M RADIUS SHALL BE REPLACED AS MODIFIED OR AS DIRECTED BY THE CONTRACT ADMINISTRATOR.  
3) INSTALL DETECTIBLE WARNING SURFACE TILES AT CURB RAMP AS PER CW3326

**WARNING**  
IF POWER EQUIPMENT OR EXPLOSIVES ARE TO BE USED FOR EXCAVATION ON THIS PROJECT THE CONTRACTOR MUST:  
1) OBTAIN CLEARANCE FROM THE GAS UTILITY PRIOR TO EXCAVATION.  
2) TAKE PRECAUTION TO AVOID DAMAGE TO GAS UTILITY INSTALLATIONS.  
SEE PROVINCIAL REGULATION 210/72 FOR DETAILS

**METRIC**  
WHOLE NUMBERS INDICATE MILLIMETRES  
DECIMALIZED NUMBERS INDICATE METRES

BID OPPORTUNITY NO. 4-2017

⊕	HYDRANT	— — — —	LDS/WWS	— — — —	CONCRETE	▬▬▬▬▬▬
⊕	VALVE	— — — —	WATERMAIN	— — — —	CONCRETE SIDEWALK	▬▬▬▬▬▬▬▬
⊕	CURB STOP	— — — —	GAS	— — — —	ASPHALT	▬▬▬▬▬▬
⊕	MANHOLE	— — — —	TRAFFIC SIGNALS	— — — —	FENCE	▬▬▬▬▬▬▬▬
⊕	CATCH BASIN	— — — —	HYDRO/STREET LIGHT	— — — —		
⊕	CURB INLET	— — — —	MTS	— — — —		
⊕	HYDRO POLE	— — — —	CURB RENEWAL	— — — —		
⊕	LIGHT STANDARD	— — — —	PROPERTY LINE	— — — —	EXISTING	▬▬▬▬▬▬
⊕	SURVEY BAR	— — — —	RAMP CURB	— — — —	PROPOSED	▬▬▬▬▬▬
⊕	TEST HOLE	— — — —	ELEVATIONS	(231.000)	LEGEND - PLAN	▬▬▬▬▬▬
			TREE	— — — —	WEST GUTTER	▬▬▬▬▬▬
					CENTER LINE	▬▬▬▬▬▬
					EAST GUTTER	▬▬▬▬▬▬
					LEGEND - PROFILE	▬▬▬▬▬▬
					PROPOSED	▬▬▬▬▬▬

**LOCATION APPROVED UNDERGROUND STRUCTURES**  
SUPR. U/G STRUCTURES DATE  
NOTE:  
LOCATION OF UNDERGROUND STRUCTURES AS SHOWN ARE BASED ON THE BEST INFORMATION AVAILABLE. BUT NO GUARANTEE IS GIVEN THAT ALL EXISTING UTILITIES ARE SHOWN OR THAT THE GIVEN LOCATIONS ARE EXACT. CONFIRMATION OF EXISTENCE AND EXACT LOCATION OF ALL SERVICES MUST BE OBTAINED FROM THE INDIVIDUAL UTILITIES BEFORE PROCEEDING WITH CONSTRUCTION.

B.M. I.B. @ N.W. CORNER OF #1103 DOWNING ST. ELEV. 232.746

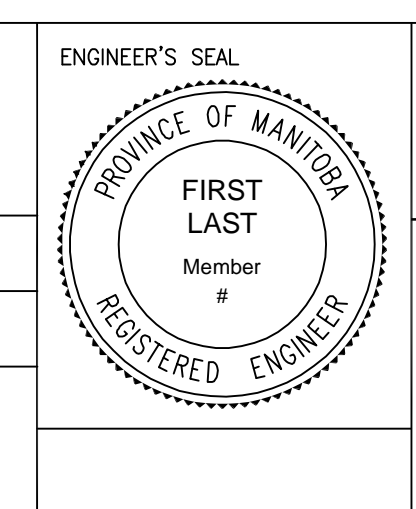
1.	SUBMIT FOR PLAN APPROVAL	17/02/23	T.K.
NO.	REVISIONS	DATE	BY

**ENGINEERING DIVISION  
TECHNOLOGY SERVICES BRANCH  
106 - 1155 PACIFIC AVE**

DESIGNED BY T.K. CHECKED BY R.W.  
DRAWN BY T.K. APPROVED BY

HOR. SCALE: 1 : 250  
VERTICAL: 1 : 10

DATE 2017/03/29



**THE CITY OF WINNIPEG  
PUBLIC WORKS DEPARTMENT**

**DOWNING STREET**  
FROM SARGENT PARK PLACE TO WELLINGTON AVENUE  
ASPHALT RECONSTRUCTION AND ASSOCIATED WORKS  
FROM STA. 2+00 TO STA. 3+49

CITY DRAWING NUMBER SE-17-21  
SHEET 10 OF 13  
2