

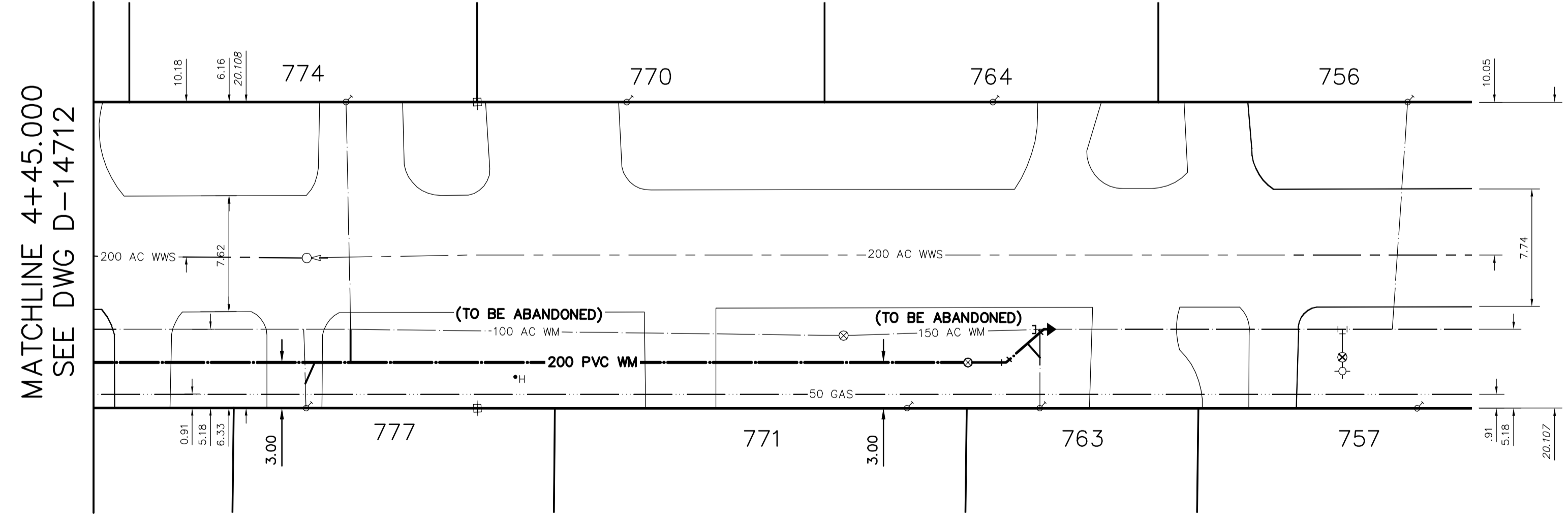
NOTE: CHAINAGES SHOWN ARE ALONG E. R. OF COVENTRY ROAD



WATER SERVICE INFORMATION

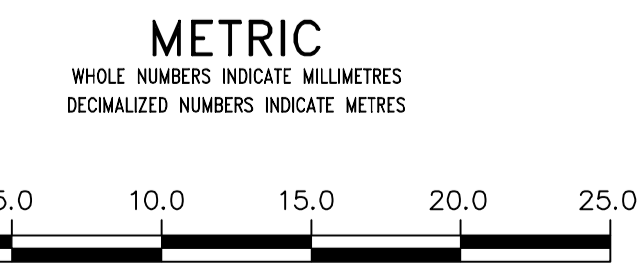
ADDRESS	SIZE (mm) MATERIAL (STREET)	SIZE (mm) MATERIAL (PROP.)	SHORT & LONG MEASUREMENT	CORP. LOCATION	REMARKS
756 COVENTRY RD	20 CU	20 CU	3.52 SNL HSE	1.0 S OF S/C	OUTSIDE LIMITS
757 COVENTRY RD	20 CU	20 CU	4.31,210>NNL RIDGEWOOD AVE	—	OUTSIDE LIMITS
763 COVENTRY RD	20 CU	20 CU	5.44 SNL HSE	—	RECONNECT SERVICE
764 COVENTRY RD	20 CU	20 CU	4.32,038>NNL RIDGEWOOD AVE	—	RECONNECT SERVICE
770 COVENTRY RD	20 CU	20 CU	3.66 NSL HSE	—	RECONNECT SERVICE
771 COVENTRY RD	20 CU	20 CU	407,225>NNL RIDGEWOOD AVE	—	RECONNECT SERVICE
774 COVENTRY RD	20 CU	20 CU	7.22 NSL HSE	—	RECONNECT SERVICE
777 COVENTRY RD	20 CU	20 CU	403,937>NNL RIDGEWOOD AVE	—	RECONNECT SERVICE
779 COVENTRY RD	20 CU	20 CU	3.53 NSL HSE	—	RECONNECT SERVICE
779 COVENTRY RD	20 CU	20 CU	379,871>NNL RIDGEWOOD AVE	—	RECONNECT SERVICE
779 COVENTRY RD	20 CU	20 CU	3.92 SNL HSE	—	RECONNECT SERVICE
779 COVENTRY RD	20 CU	20 CU	398,494>NNL RIDGEWOOD AVE	—	RECONNECT SERVICE
774 COVENTRY RD	20 CU	20 CU	5.21 SNL HSE	0.3 N OF S/C	RECONNECT SERVICE
774 COVENTRY RD	20 CU	20 CU	361,415>NNL RIDGEWOOD AVE	—	RECONNECT SERVICE
777 COVENTRY RD	20 CU	20 CU	1.72 NSL HSE	—	RECONNECT SERVICE
777 COVENTRY RD	20 CU	20 CU	358,987>NNL RIDGEWOOD AVE	—	RECONNECT SERVICE
781 COVENTRY RD	20 CU	20 CU	0.77 NSL HSE	1.1 S OF S/C	RECONNECT SERVICE
781 COVENTRY RD	20 CU	20 CU	334,825>NNL RIDGEWOOD AVE	—	RECONNECT SERVICE
782 COVENTRY RD	20 CU	20 CU	1.40 NSL HSE	—	RECONNECT SERVICE
782 COVENTRY RD	20 CU	20 CU	328,209>NNL RIDGEWOOD AVE	—	RECONNECT SERVICE
787 COVENTRY RD	20 CU	20 CU	3.24 NSL HSE	—	RECONNECT SERVICE
787 COVENTRY RD	20 CU	20 CU	314,573>NNL RIDGEWOOD AVE	—	RECONNECT SERVICE
788 COVENTRY RD	20 CU	20 CU	1.16 NSL HSE	—	RECONNECT SERVICE
794 COVENTRY RD	20 CU	20 CU	311,437>NNL RIDGEWOOD AVE	—	RECONNECT SERVICE
794 COVENTRY RD	20 CU	20 CU	4.15 SNL HSE	—	RECONNECT SERVICE
794 COVENTRY RD	20 CU	20 CU	295,408>NNL RIDGEWOOD AVE	—	RECONNECT SERVICE
795 COVENTRY RD	20 CU	20 CU	6.53 SNL HSE	—	RECONNECT SERVICE
795 COVENTRY RD	20 CU	20 CU	293,009>NNL RIDGEWOOD AVE	—	RECONNECT SERVICE
800 COVENTRY RD	20 CU	20 CU	4.15 SNL HSE	OPP S/C	RECONNECT SERVICE
800 COVENTRY RD	20 CU	20 CU	295,408>NNL RIDGEWOOD AVE	—	RECONNECT SERVICE
801 COVENTRY RD	20 CU	20 CU	3.02 NSL HSE	—	RECONNECT SERVICE
801 COVENTRY RD	20 CU	20 CU	268,105>NNL RIDGEWOOD AVE	—	RECONNECT SERVICE
802 COVENTRY RD	20 CU	20 CU	3.83 SNL HSE	—	RECONNECT SERVICE
802 COVENTRY RD	20 CU	20 CU	258,382>NNL RIDGEWOOD AVE	—	RECONNECT SERVICE
806 COVENTRY RD	20 CU	20 CU	5.92 SNL HSE	—	RECONNECT SERVICE
806 COVENTRY RD	20 CU	20 CU	240,951>NNL RIDGEWOOD AVE	—	RECONNECT SERVICE
807 COVENTRY RD	20 CU	20 CU	2.53 NSL HSE	—	RECONNECT SERVICE
807 COVENTRY RD	20 CU	20 CU	245,245>NNL RIDGEWOOD AVE	—	RECONNECT SERVICE
810 COVENTRY RD	20 CU	20 CU	5.05 SNL HSE	—	RECONNECT SERVICE
810 COVENTRY RD	20 CU	20 CU	227,104>NNL RIDGEWOOD AVE	—	RECONNECT SERVICE
811 COVENTRY RD	20 CU	20 CU	6.79 NSL HSE	—	RECONNECT SERVICE
811 COVENTRY RD	20 CU	20 CU	220,113>NNL RIDGEWOOD AVE	—	RECONNECT SERVICE
814 COVENTRY RD	20 CU	20 CU	2.71 NSL HSE	—	RECONNECT SERVICE
814 COVENTRY RD	20 CU	20 CU	199,643>NNL RIDGEWOOD AVE	—	RECONNECT SERVICE
819 COVENTRY RD	20 CU	20 CU	4.19 SNL HSE	—	RECONNECT SERVICE
819 COVENTRY RD	20 CU	20 CU	200,165>NNL RIDGEWOOD AVE	—	RECONNECT SERVICE
827 COVENTRY RD	20 CU	20 CU	1.20 SSL HSE	—	RECONNECT SERVICE
827 COVENTRY RD	20 CU	20 CU	165,615>NNL RIDGEWOOD AVE	—	RECONNECT SERVICE
828 COVENTRY RD	20 CU	20 CU	3.28 NSL HSE	—	RECONNECT SERVICE
828 COVENTRY RD	20 CU	20 CU	163,268>NNL RIDGEWOOD AVE	—	RECONNECT SERVICE
831 COVENTRY RD	20 CU	20 CU	2.15 NSL HSE	—	RECONNECT SERVICE
831 COVENTRY RD	20 CU	20 CU	140,429>NNL RIDGEWOOD AVE	—	RECONNECT SERVICE
836 COVENTRY RD	20 CU	20 CU	3.50 SNL HSE	—	RECONNECT SERVICE
836 COVENTRY RD	20 CU	20 CU	143,766>NNL RIDGEWOOD AVE	—	RECONNECT SERVICE
841 COVENTRY RD	20 CU	20 CU	0.60 SNL HSE	—	RECONNECT SERVICE
841 COVENTRY RD	20 CU	20 CU	134,106>NNL RIDGEWOOD AVE	—	RECONNECT SERVICE
845 COVENTRY RD	20 CU	20 CU	5.03 NSL HSE	—	RECONNECT SERVICE
845 COVENTRY RD	20 CU	20 CU	100,064>NNL RIDGEWOOD AVE	—	RECONNECT SERVICE
850 COVENTRY RD	20 CU	20 CU	8.17 SNL HSE	—	RECONNECT SERVICE
850 COVENTRY RD	20 CU	20 CU	85,137>NNL RIDGEWOOD AVE	—	RECONNECT SERVICE
851 COVENTRY RD	20 CU	20 CU	4.89 NSL HSE	—	RECONNECT SERVICE
851 COVENTRY RD	20 CU	20 CU	76,930>NNL RIDGEWOOD AVE	—	RECONNECT SERVICE
854 COVENTRY RD	20 CU	20 CU	8.47 SNL HSE	—	RECONNECT SERVICE
854 COVENTRY RD	20 CU	20 CU	62,959>NNL RIDGEWOOD AVE	—	RECONNECT SERVICE
857 COVENTRY RD	20 CU	20 CU	2.58 NSL HSE	—	RECONNECT SERVICE
857 COVENTRY RD	20 CU	20 CU	63,079>NNL RIDGEWOOD AVE	—	RECONNECT SERVICE
863 COVENTRY RD	20 CU	20 CU	0.60 SNL HSE	—	RECONNECT SERVICE
863 COVENTRY RD	20 CU	20 CU	35,739>NNL RIDGEWOOD AVE	—	RECONNECT SERVICE
866 COVENTRY RD	20 CU	20 CU	2.24 NSL HSE	—	RECONNECT SERVICE
866 COVENTRY RD	20 CU	20 CU	37,383>NNL RIDGEWOOD AVE	—	RECONNECT SERVICE
869 COVENTRY RD	20 CU	20 CU	9.34 SNL HSE	—	RECONNECT SERVICE
869 COVENTRY RD	20 CU	20 CU	30,854>NNL RIDGEWOOD AVE	—	RECONNECT SERVICE
870 COVENTRY RD	20 CU	20 CU	2.86 SNL HSE	OPP S/C	RECONNECT SERVICE
870 COVENTRY RD	20 CU	20 CU	28,301>NNL RIDGEWOOD AVE	—	RECONNECT SERVICE
872 COVENTRY RD	20 CU	20 CU	5.89 NSL HSE	OPP S/C	RECONNECT SERVICE
872 COVENTRY RD	20 CU	20 CU	28,822>NNL RIDGEWOOD AVE	—	RECONNECT SERVICE

*SERVICES TO BE RENEWED TO R. ALL OTHERS TO BE RECONNECTED



NOTE: ALL VALVES TO BE INSTALLED CLOCKWISE TO CLOSE

FOR INDEX SEE D-14707



WARNING
IF POWER EQUIPMENT OR EXPLOSIVES ARE TO BE USED FOR EXCAVATION ON THIS PROJECT THE CONTRACTOR MUST:
1) NOTIFY THE GAS COMPANY OF THE PROPOSED LOCATION OF EXCAVATION.
2) TAKE PRECAUTION TO AVOID DAMAGE TO GAS COMPANY INSTALLATIONS.
SEE PROVINCIAL REGULATION 210/72 FOR DETAILS

LOCATION APPROVED UNDERGROUND STRUCTURES
SUPV. U/G STRUCTURES COMMITTEE DATE
NOTE:
LOCATION OF UNDERGROUND STRUCTURES AS SHOWN ARE BASED ON THE BEST INFORMATION AVAILABLE BUT NO GUARANTEE IS GIVEN THAT ALL EXISTING UTILITIES ARE SHOWN OR THAT THE GIVEN LOCATIONS ARE EXACT. CONFIRMATION OF EXISTENCE AND EXACT LOCATION OF ALL SERVICES MUST BE OBTAINED FROM THE INDIVIDUAL UTILITIES BEFORE PROCEEDING WITH CONSTRUCTION.

B.M. ELEV.	DESIGNED BY	CHECKED BY	DATE	BY
	JF	SC	2017 05 10	
	RJ	KZ	2017 05 09	

ENGINEER'S SEAL
ORIGINAL SIGNED BY S.J.R. COURNOYER 17/05/10
KAS ZUREK
DATE 2017 05 09

THE CITY OF WINNIPEG
WATER AND WASTE DEPARTMENT
ENGINEERING DIVISION

2017 WATER MAIN RENEWALS
CONTRACT 3
COVENTRY ROAD
345 N OF RIDGEWOOD AVENUE TO
436 N OF RIDGEWOOD AVENUE

SHEET 8 OF 16
CITY DRAWING NUMBER
D-14713