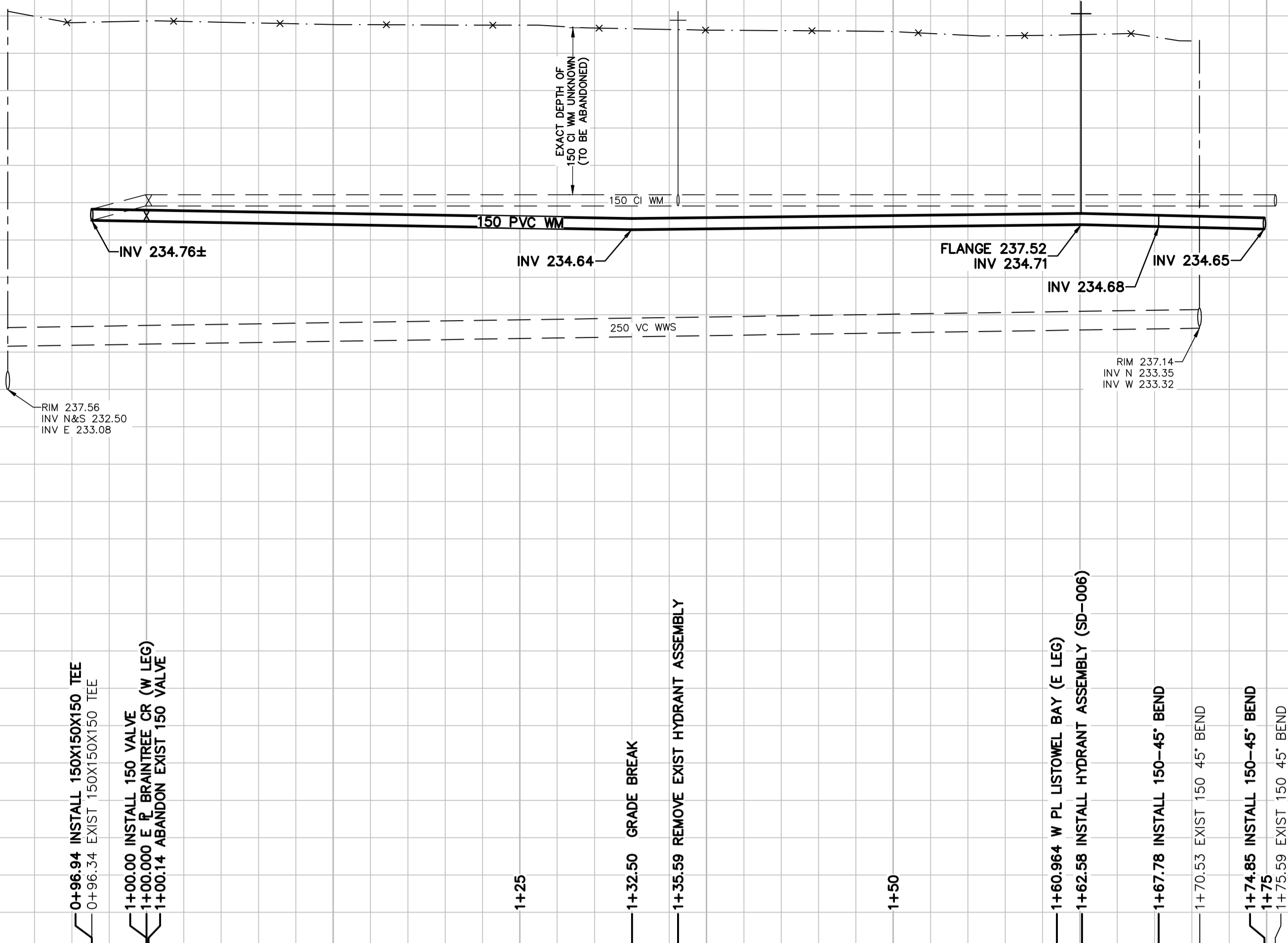


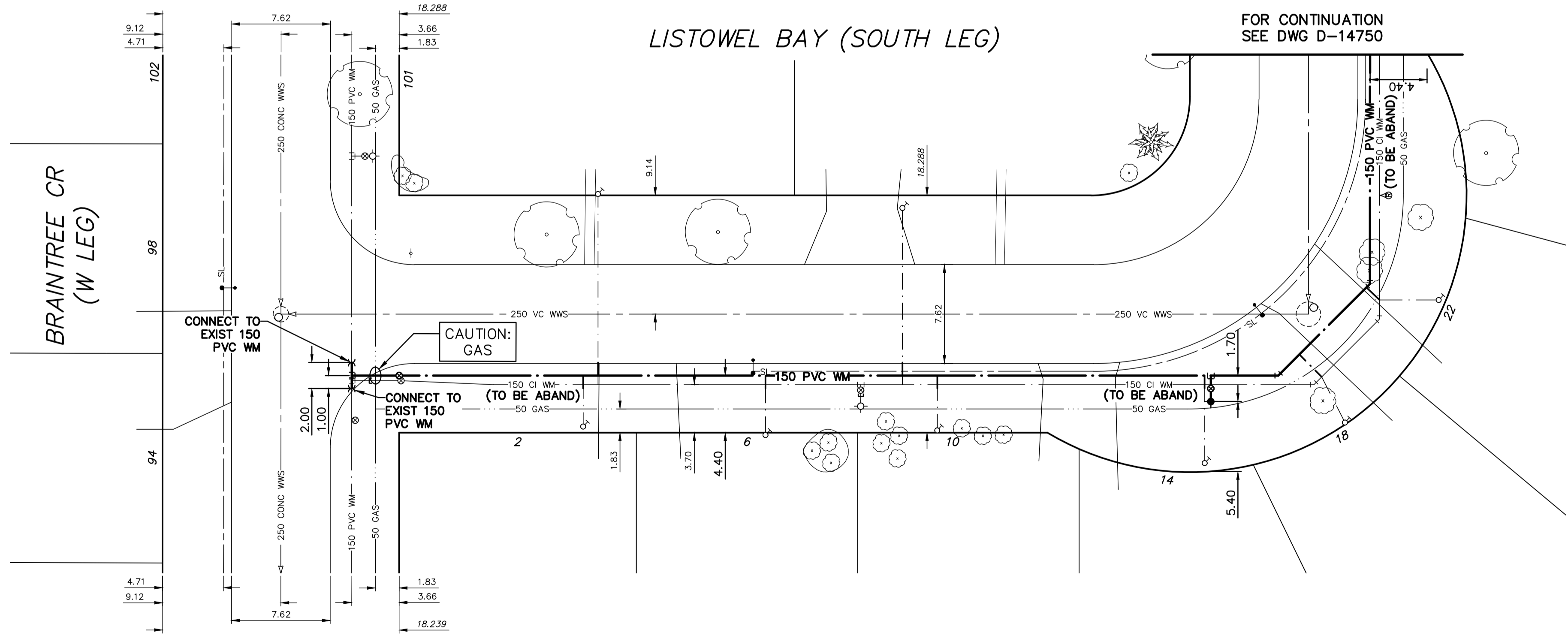
238.0
237.0
236.0
235.0
234.0
233.0
232.0
231.0
230.0
229.0

238.0
237.0
236.0
235.0
234.0
233.0
232.0
231.0
230.0
229.0



0+75
0+81.761 W P BRAINTREE CR (W LEG)
0+96.94 INSTALL 150X150X150 TEE
0+96.34 EXIST 150X150X150 TEE
1+00.00 INSTALL 150 VALVE
1+00.000 E P BRAINTREE CR (W LEG)
1+00.14 ABANDON EXIST 150 VALVE
1+25
1+32.50 GRADE BREAK
1+35.59 REMOVE EXIST HYDRANT ASSEMBLY
1+50
1+60.964 W PL LISTOWEL BAY (E LEG)
1+62.58 INSTALL HYDRANT ASSEMBLY (SD-006)
1+67.78 INSTALL 150-45° BEND
1+70.53 EXIST 150 45° BEND
1+74.85 INSTALL 150-45° BEND
1+75 EXIST 150 45° BEND
1+75.59 EXIST 150 45° BEND
1+79.252 E PL LISTOWEL BAY (E LEG)

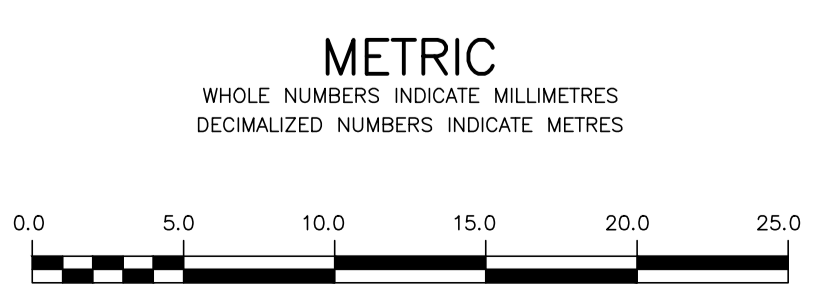
NOTE: CHAINAGES SHOWN ARE ALONG S P OF LISTOWEL BAY



WATER SERVICE INFORMATION

ADDRESS	SIZE (mm) MATERIAL (STREET)	SIZE (mm) MATERIAL (PROP.)	SHORT & LONG MEASUREMENT	CORP. LOCATION	REMARKS
2 LISTOWEL BY RESIDENTIAL	-	20 CU	8.66 N HSE IN LINE W SIDE	-	RECONNECT SERVICE
6 LISTOWEL BY RESIDENTIAL	-	20 CU	5.61 WEHL	-	RECONNECT SERVICE
10 LISTOWEL BY RESIDENTIAL	-	20 CU	8.05 WEHL	-	RECONNECT SERVICE
14 LISTOWEL BY RESIDENTIAL	-	20 CU	5.55 SW OF NE HL	-	RECONNECT SERVICE
18 LISTOWEL BY RESIDENTIAL	-	20 CU	5.58 WEHL	-	RECONNECT SERVICE
22 LISTOWEL BY RESIDENTIAL	-	20 CU	7.99 SW OF NE HL	-	RECONNECT SERVICE
24 LISTOWEL BY RESIDENTIAL	-	20 CU	5.18 WEHL	-	RECONNECT SERVICE

* SERVICES TO BE RENEWED TO P. ALL OTHERS TO BE RECONNECTED



WARNING
IF POWER EQUIPMENT OR EXPLOSIVES ARE TO BE USED FOR EXCAVATION ON THIS PROJECT THE CONTRACTOR MUST:
1) NOTIFY THE GAS COMPANY OF THE PROPOSED LOCATION OF EXCAVATION.
2) TAKE PRECAUTION TO AVOID DAMAGE TO GAS COMPANY INSTALLATIONS.
SEE PROVINCIAL REGULATION 21072 FOR DETAILS

LOCATION APPROVED UNDERGROUND STRUCTURES
SUPV. U/G STRUCTURES COMMITTEE DATE
NOTE:
LOCATION OF UNDERGROUND STRUCTURES AS SHOWN ARE BASED ON THE BEST INFORMATION AVAILABLE BUT NO GUARANTEE IS GIVEN THAT ALL EXISTING UTILITIES ARE SHOWN OR THAT THE GIVEN LOCATIONS ARE EXACT. CONFIRMATION OF EXISTENCE AND EXACT LOCATION OF ALL SERVICES MUST BE OBTAINED FROM THE INDIVIDUAL UTILITIES BEFORE PROCEEDING WITH CONSTRUCTION.

B.M. 39-032 ELEV. 238.871
S.W. Cor. Moray St. & Silver Ave., Tbit. in N. Conc. foundation No. 65 Moray Village, 3 m W. & 0.1 m below brick of N.E. Cor. of apartment unit.

NO.	REVISIONS	DATE	BY

MORRISON HERSHFIELD

DESIGNED BY	JKH	CHECKED BY	HAK
DRAWN BY	DML	APPROVED BY	BWB
SCALE:		RELEASED FOR CONSTRUCTION	KAS ZUREK
HORIZONTAL	1:250	DATE	2017 05 11
VERTICAL	1:50	DATE	2017 05 17

ENGINEERS GEOSCIENTISTS
Certificate of Authorization
MORRISON HERSHFIELD
No. 1736

FOR INDEX SEE D-14739

NOTE: ALL VALVES TO BE INSTALLED COUNTER-CLOCKWISE TO CLOSE

ENGINEER'S SEAL
ORIGINAL SIGNED BY H.A. KATZ
2017 05 17

THE CITY OF WINNIPEG
WATER AND WASTE DEPARTMENT
ENGINEERING DIVISION

2017 WATER MAIN RENEWALS
CONTRACT 9
LISTOWEL BAY (SOUTH LEG)
BRAINTREE CRESCENT (WEST LEG) TO LISTOWEL BAY (EAST LEG)

SHEET 12 OF 21
CITY DRAWING NUMBER
D-14749