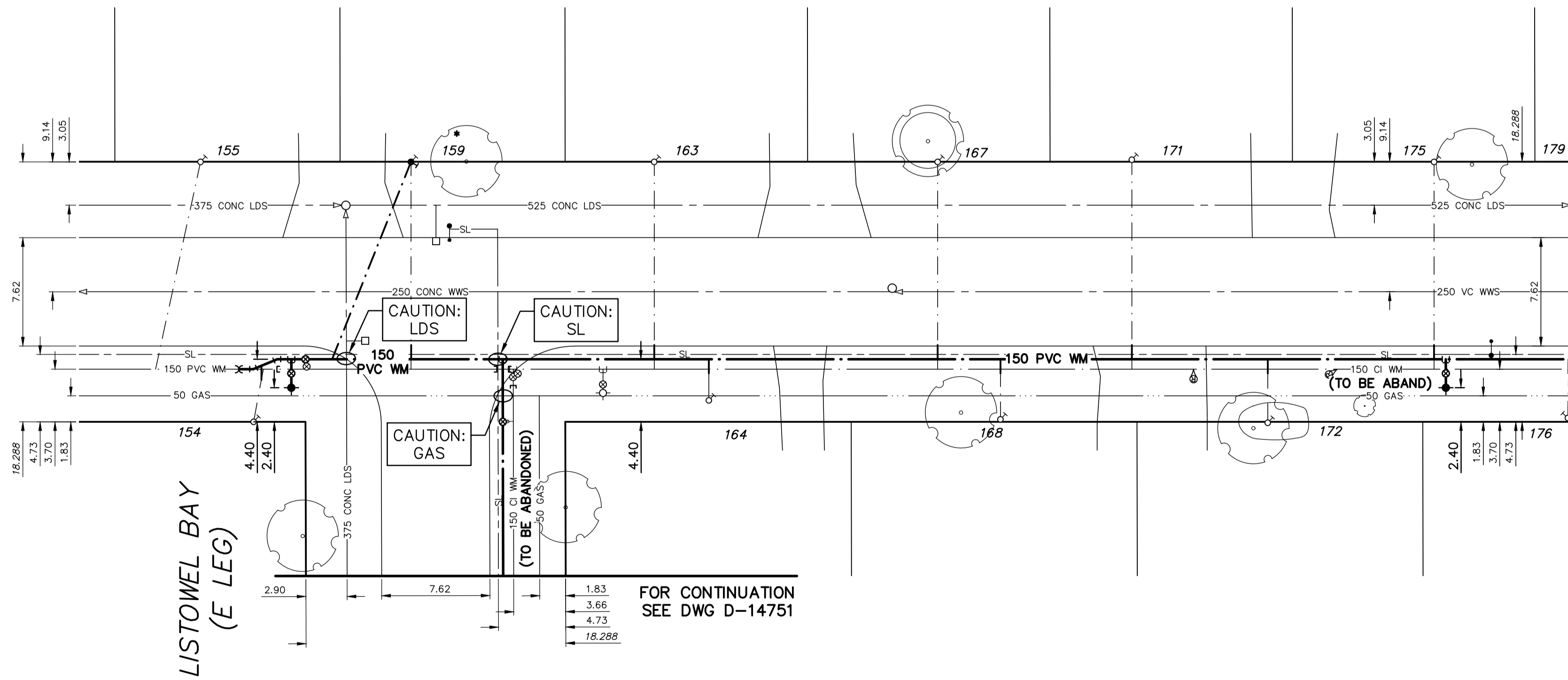


NOTE: CHAINAGES SHOWN ARE ALONG S R OF BRAINTREE CRESCENT

BRAINTREE CRESCENT (NORTH LEG)



WATER SERVICE INFORMATION

ADDRESS	SIZE (mm) MATERIAL (STREET)	SIZE (mm) MATERIAL (PROP.)	SHORT & LONG MEASUREMENT	CORP. LOCATION	REMARKS
154 BRAintree CR RESIDENTIAL	20 CU	20 1.83 EEHL	-	3.05 W.VLVE AT WPL LISTOWEL	RECONNECT SERVICE
155 BRAintree CR RESIDENTIAL	20 CU	20 2.59 EWHL	-	10.67 W.VLVE AT WPL LISTOWEL	RECONNECT SERVICE
159 BRAintree CR RESIDENTIAL	20 CU	20 0.76 EWHL	-	-	RENEW SERVICE TO P/L
163 BRAintree CR RESIDENTIAL	20 CU	20 4.57 EWHL	-	-	RECONNECT SERVICE
164 BRAintree CR RESIDENTIAL	20 CU	20 2.68 WEHL	-	-	RECONNECT SERVICE
167 BRAintree CR RESIDENTIAL	20 CU	20 5.79 EWHL	-	-	RECONNECT SERVICE
168 BRAintree CR RESIDENTIAL	20 CU	20 9.48 WEHL	-	-	RECONNECT SERVICE
171 BRAintree CR RESIDENTIAL	20 CU	20 3.62 EWHL	-	-	RECONNECT SERVICE
172 BRAintree CR RESIDENTIAL	20 CU	20 8.20 WEHL	-	-	RECONNECT SERVICE
175 BRAintree CR RESIDENTIAL	20 CU	20 5.36 WEHL	-	-	RECONNECT SERVICE
176 BRAintree CR RESIDENTIAL	20 CU	20 8.53 WEHL	-	-	RECONNECT SERVICE

* SERVICES TO BE RENEWED TO R. ALL OTHERS TO BE RECONNECTED



FOR INDEX SEE D-14739

NOTE: ALL VALVES TO BE INSTALLED COUNTER-CLOCKWISE TO CLOSE

METRIC
WHOLE NUMBERS INDICATE MILLIMETRES
DECIMALIZED NUMBERS INDICATE METRES



WARNING

IF POWER EQUIPMENT OR EXPLOSIVES ARE TO BE USED FOR EXCAVATION ON THIS PROJECT THE CONTRACTOR MUST:

- 1) NOTIFY THE GAS COMPANY OF THE PROPOSED LOCATION OF EXCAVATION.
- 2) TAKE PRECAUTION TO AVOID DAMAGE TO GAS COMPANY INSTALLATIONS.

SEE PROVINCIAL REGULATION 21072 FOR DETAILS

LOCATION APPROVED UNDERGROUND STRUCTURES

SUPV. U/G STRUCTURES COMMITTEE DATE

NOTE:

LOCATION OF UNDERGROUND STRUCTURES AS SHOWN ARE BASED ON THE BEST INFORMATION AVAILABLE BUT NO GUARANTEE IS GIVEN THAT ALL EXISTING UTILITIES ARE SHOWN OR THAT THE GIVEN LOCATIONS ARE EXACT. CONFIRMATION OF EXISTENCE AND EXACT LOCATION OF ALL SERVICES MUST BE OBTAINED FROM THE INDIVIDUAL UTILITIES BEFORE PROCEEDING WITH CONSTRUCTION.

B.M. 39-032 ELEV. 238.871

S.W. Cor. Moray St. & Silver Ave., Tbit. in N. Conc. foundation No. 65 Moray Village, 3 m W. & 0.1 m below brick of N.E. Cor. of apartment unit.



DESIGNED BY	JKH	CHECKED BY	HAK
DRAWN BY	DML	APPROVED BY	BWB
SCALE:		RELEASED FOR CONSTRUCTION	KAS ZUREK
HORIZONTAL	1:250		
VERTICAL	1:50		
DATE	2017 05 11	DATE	2017 05 17

ENGINEER'S SEAL

ORIGINAL SIGNED BY H.A. KATZ 2017 05 17

CONSULTANT DRAWING NUMBER



2017 WATER MAIN RENEWALS CONTRACT 9

BRAINTREE CRESCENT (N LEG)
LISTOWEL BAY (EAST LEG) TO 70 m W OF LADYWOOD DRIVE

SHEET 15 OF 21
CITY DRAWING NUMBER

D-14752