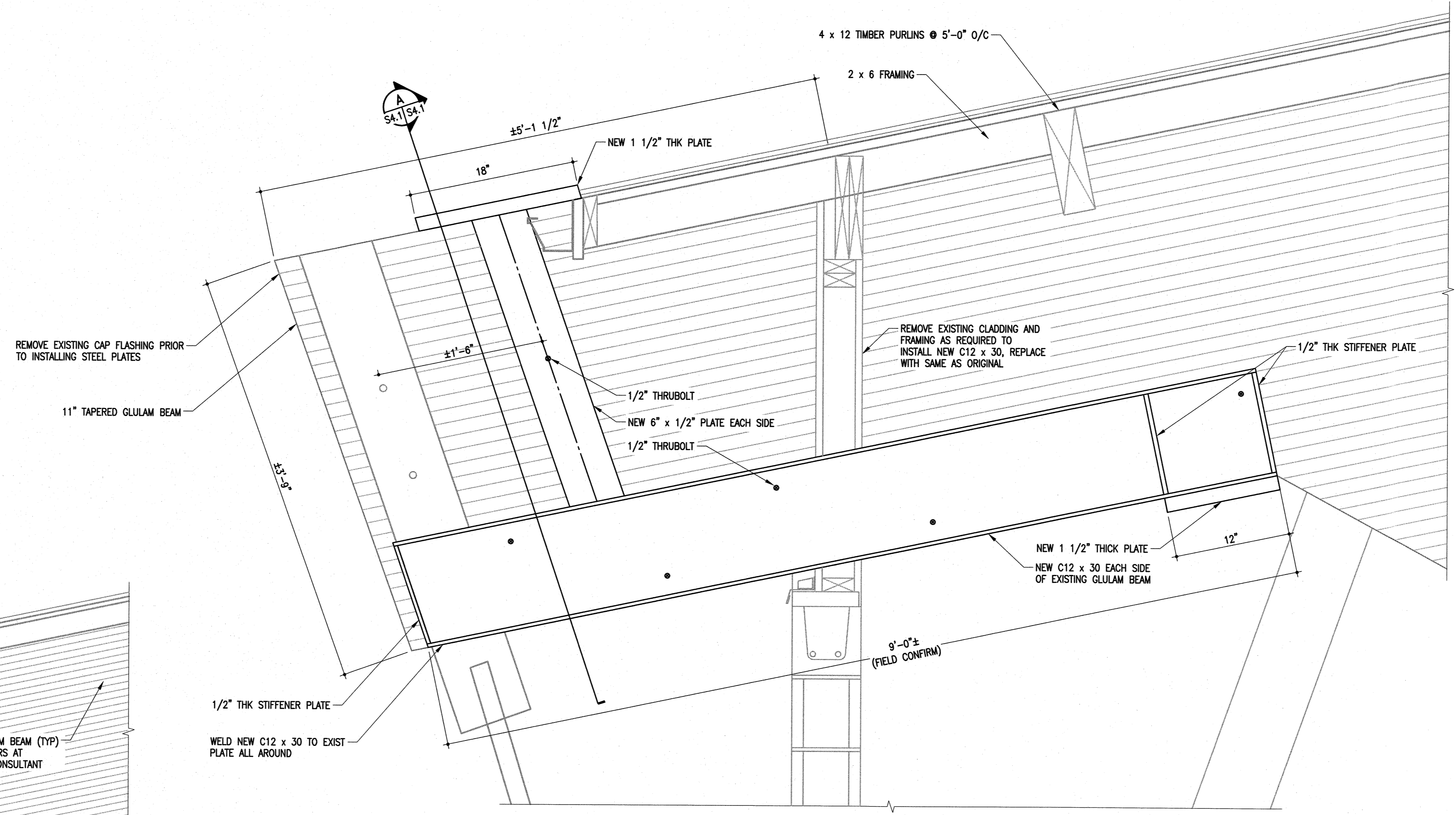


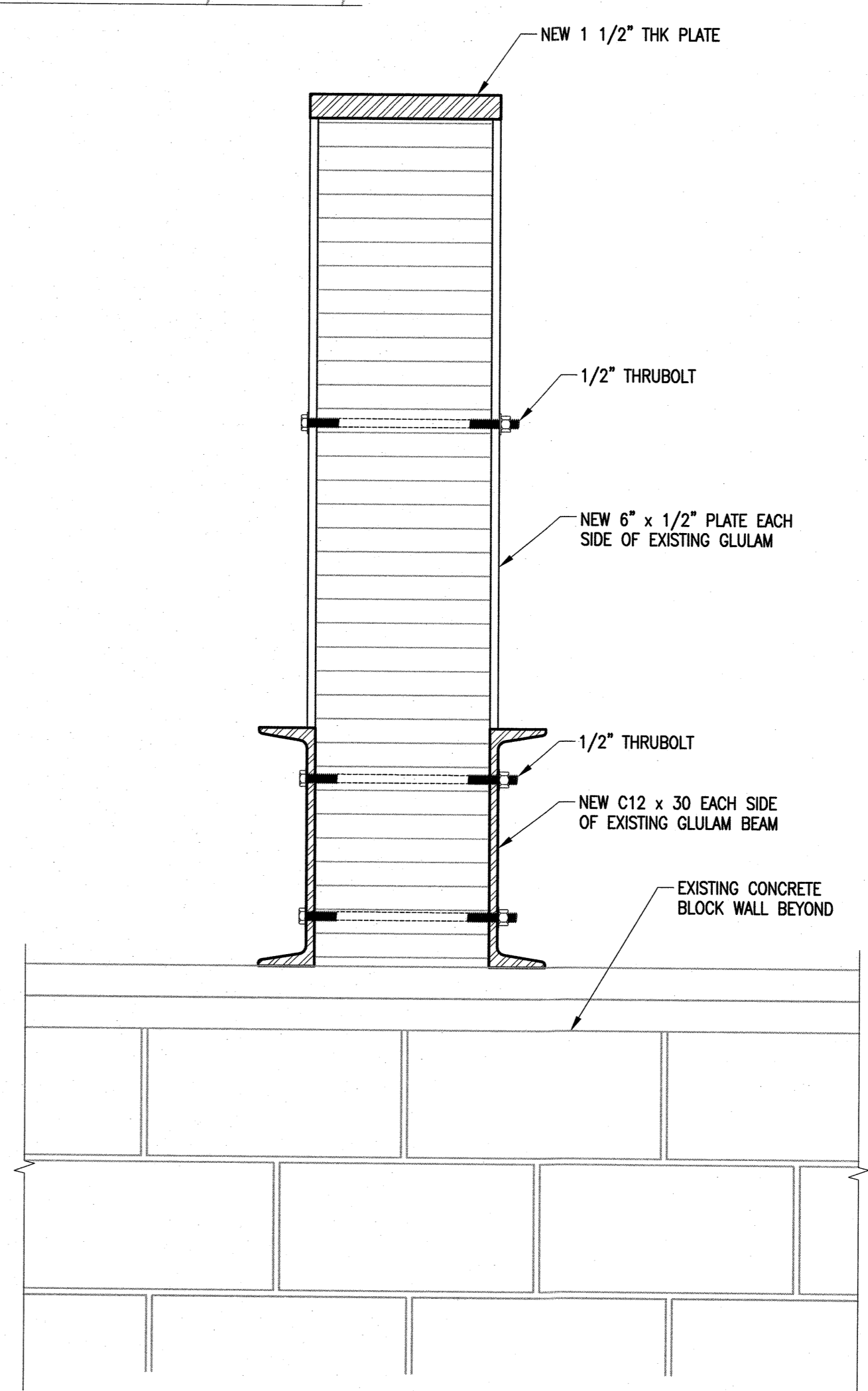
**1** EXISTING TYPICAL GLULAM SECTION  
S2.1 S4.1 3/4" = 1'-0"

\*ALL STEEL RECEIVING AIR BARRIER TO BE REMOVED OF PAINT TO WHITE METAL PRIOR TO APPLICATION OF MEMBRANE (REFER TO SPECIFICATIONS)



**2** TYPICAL GLULAM CHANNEL REPAIR  
S2.1 S4.1 1-1/2" = 1'-0"

-REMOVE AND MODIFY EXISTING TROUGH AND RWL AS NECESSARY TO ACCOMMODATE NEW STEEL CHANNEL



**A** GLULAM CHANNEL REPAIR SECTION  
S4.1 S4.1 1-1/2" = 1'-0"

The General Contractor shall check & verify all dimensions and report any errors or omissions to the designers.

No.	Date	Issue/Revision	By
0	2017-04-19	ISSUED FOR CONSTRUCTION	SMC

**APEGM**  
Certificate of Authorization  
Crosier Kilgour & Partners Ltd.  
No. 235 Date: 2017-04-19

Consultant

300-275 Carlton Street  
Winnipeg, Manitoba R3C 5R6  
T 204-943-7501  
F 204-943-7507

**Crosier Kilgour & Partners Ltd.**  
CONSULTING STRUCTURAL ENGINEERS

Project  
**BERTRAND ARENA**  
GLULAM REPAIRS  
294 BERTRAND STREET  
WINNIPEG, MANITOBA

Sheet Title  
**SECTIONS**

File	2017-0006	Date	2017-04-19
Design	SMC	Drawn	RJM

Revision	Sheet No.
<b>A</b>	<b>S4.1</b>