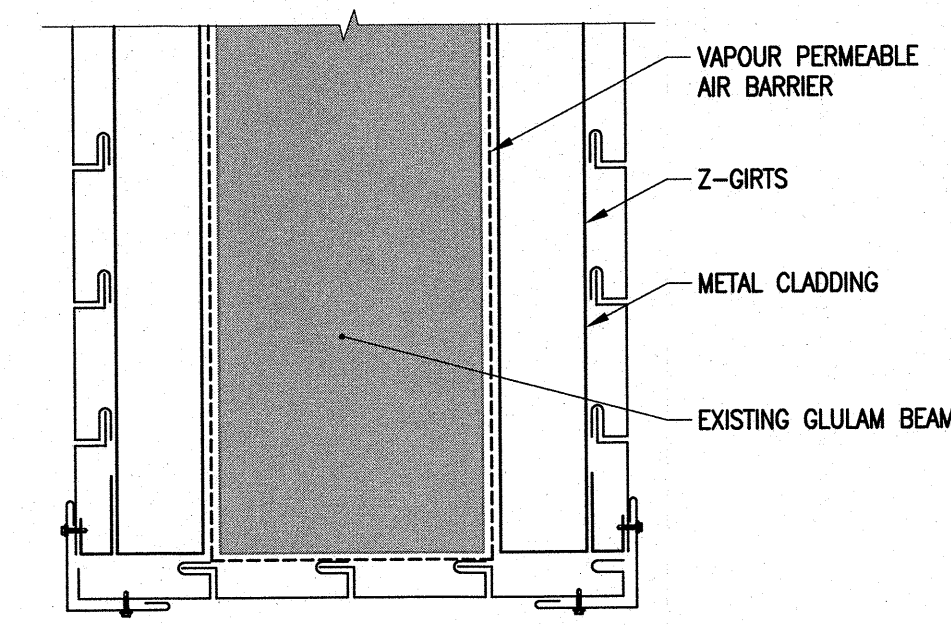
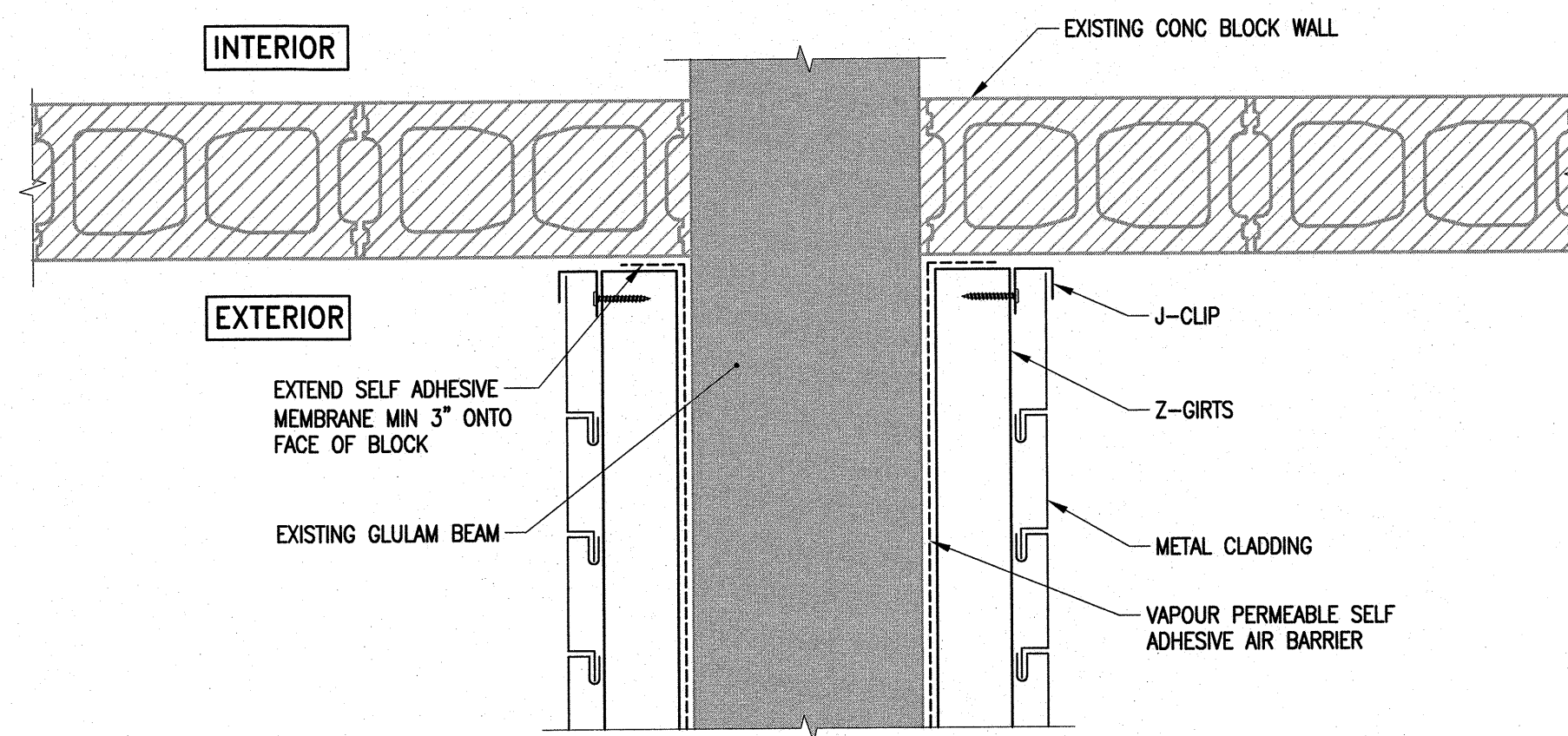


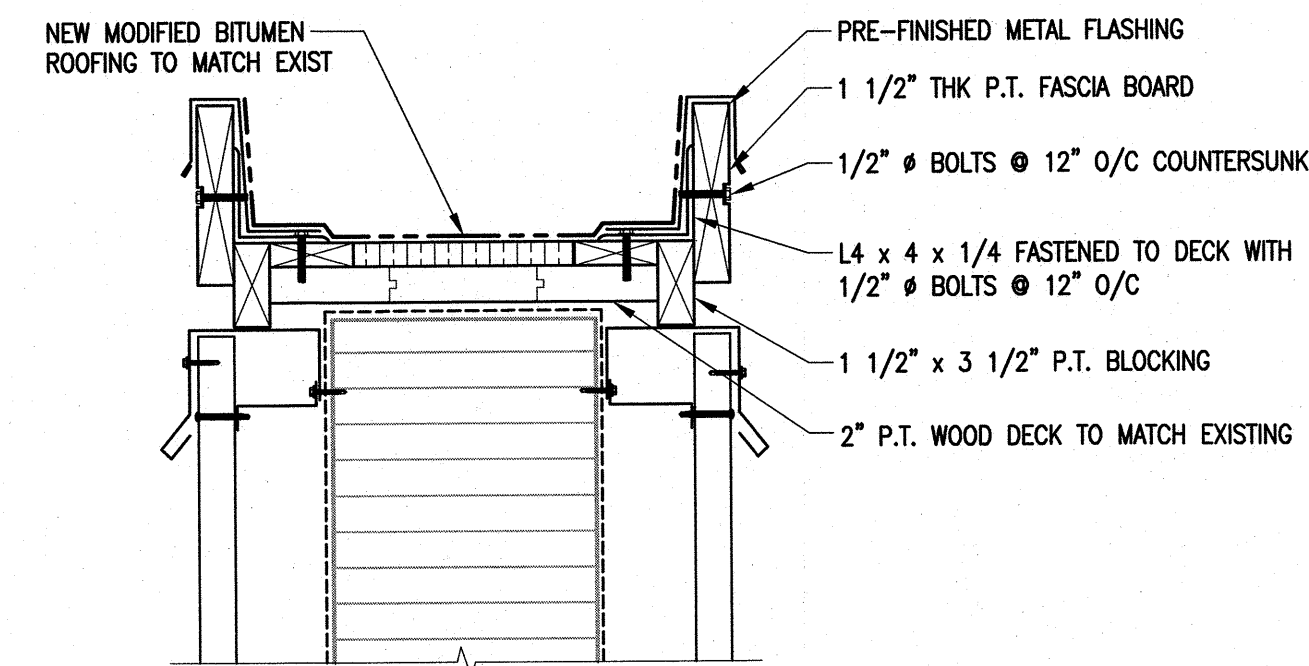
**A** GLULAM METAL CLADDING REPAIR  
S4.2 | S5.1 1-1/2" = 1'-0"



**C** TYPICAL PLAN DETAIL @ END OF GLULAM  
S4.2 | S5.1 1-1/2" = 1'-0"



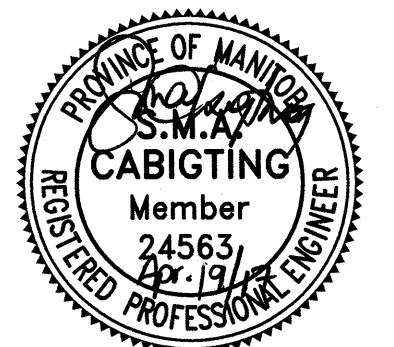
**B** TYPICAL PLAN DETAIL @ EXTERIOR WALL  
S4.2 | S5.1 1-1/2" = 1'-0"



**D** TYPICAL DETAIL AT SCUPPER  
S4.2 | S5.1 1-1/2" = 1'-0"

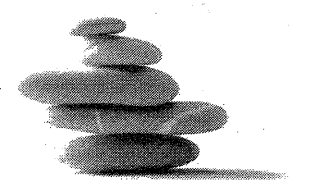
The General Contractor shall check & verify all dimensions and report any errors or omissions to the designers.

No.	Date	Issue/Revision	By
0	2017-04-19	ISSUED FOR CONSTRUCTION	SMC



Consultant

300-275 Carlton Street  
Winnipeg, Manitoba R3C 5R6  
T 204. 943. 7501  
F 204. 943. 7507



**Crosier Kilgour & Partners Ltd.**  
CONSULTING STRUCTURAL ENGINEERS

Project  
**CENTURY ARENA**  
GLULAM REPAIRS  
1377 CLARENCE AVENUE  
WINNIPEG, MANITOBA

Sheet Title  
CLADDING REPAIR DETAILS

File	2017-0007	Date	2017-04-19
Design	SMC	Drawn	RJM
Revision	Sheet No.		
<b>A</b>	<b>S5.1</b>		