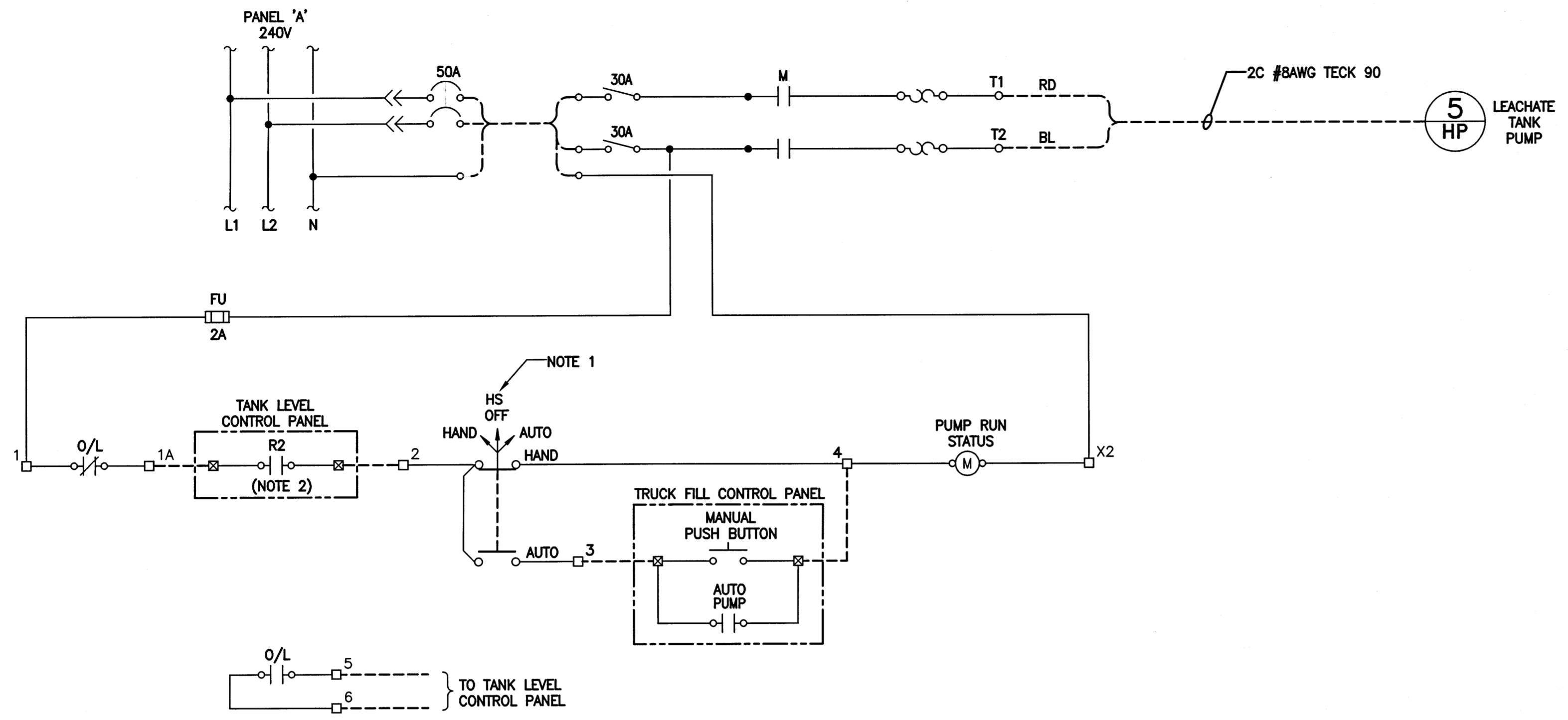


- NOTES:**
1. 'HS' DENOTES HAND SWITCH. THE DRAWING INDICATES SWITCH IN HAND POSITION.
 2. SEE REF. SHEET 40.



- LEGEND**
- STARTER TERMINALS
 - ▣ FIELD TERMINALS
 - ▭ FUSE
 - FIELD WIRING
 - MANUFACTURER WIRING
 - (M) CONTACTOR COIL
 - o|o NORMALLY OPEN
 - o|/o NORMALLY CLOSED
 - o/o FIELD DISCONNECT
 - o/L OVERLOAD

1 PUMP 1 STARTER SCHEMATIC DIAGRAM
SCALE: N.T.S.



Certificate of Authorization
KGS Group
No. 245

FOR TENDER ONLY
NOT TO BE USED FOR CONSTRUCTION

THE CITY OF WINNIPEG
WATER AND WASTE DEPARTMENT
ENGINEERING DIVISION

BRADY ROAD RESOURCE MANAGEMENT FACILITY (BRRMF)
DISPOSAL CELL CONSTRUCTION AND
LEACHATE COLLECTION STORAGE (300,000 LITRE) TANK

ELECTRICAL
P-01 MOTOR SCHEMATIC

SHEET 39 OF 44
CITY DRAWING NUMBER
1-0400A-E0020-001

LOCATION APPROVED UNDERGROUND STRUCTURES		B.M. ELEV.	
SVP. U/O STRUCTURES COMMITTEE DATE		CONSTRUCTION COMPLETION DATE: YYYY MM DD	
NOTE: LOCATION OF UNDERGROUND STRUCTURES AS SHOWN ARE BASED ON THE BEST INFORMATION AVAILABLE BUT NO GUARANTEE IS GIVEN THAT ALL EXISTING UTILITIES ARE SHOWN OR THAT THE GIVEN LOCATIONS ARE EXACT. CONFIRMATION OF EXISTENCE AND EXACT LOCATION OF ALL SERVICES MUST BE OBTAINED FROM THE INDIVIDUAL UTILITIES BEFORE PROCEEDING WITH CONSTRUCTION.			
0	ISSUED FOR TENDER	06/15/17	JPL
NO.	REVISIONS	DATE	BY

KGS GROUP CONSULTING ENGINEERS & PROJECT MANAGERS
WINNIPEG (204) 896-1209
THUNDER BAY (807) 345-2233

DESIGNED BY LU	CHECKED BY JAB
DRAWN BY JPL	APPROVED BY MAP AP
SCALE: HORIZONTAL - VERTICAL -	RELEASED FOR CONSTRUCTION
DATE 2017 06 15	DATE

ENGINEER'S SEAL
BOUCHARD
Member 20560
17/06/17
CONSULTANT DRAWING NUMBER
15-0107-014_E05