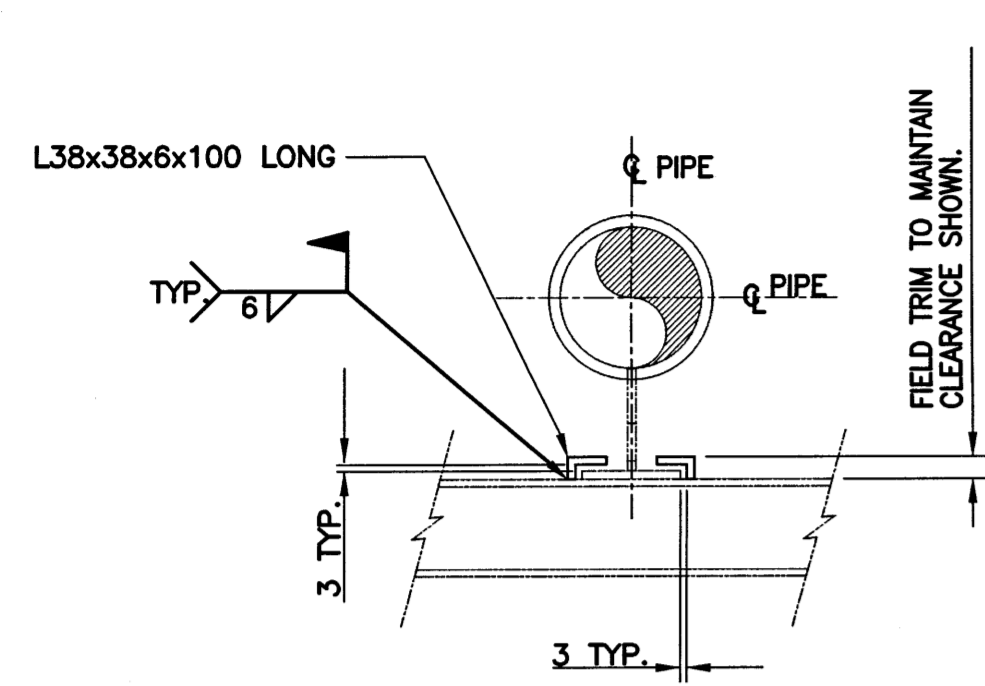
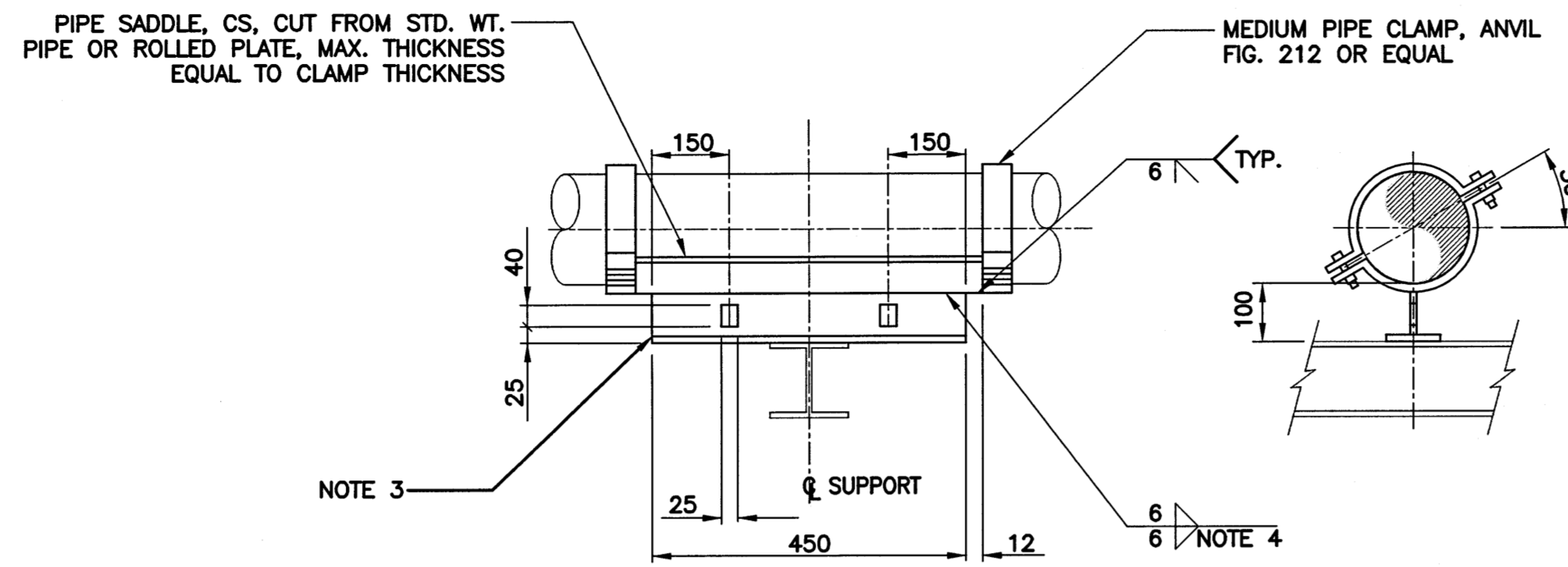


GENERAL NOTES:

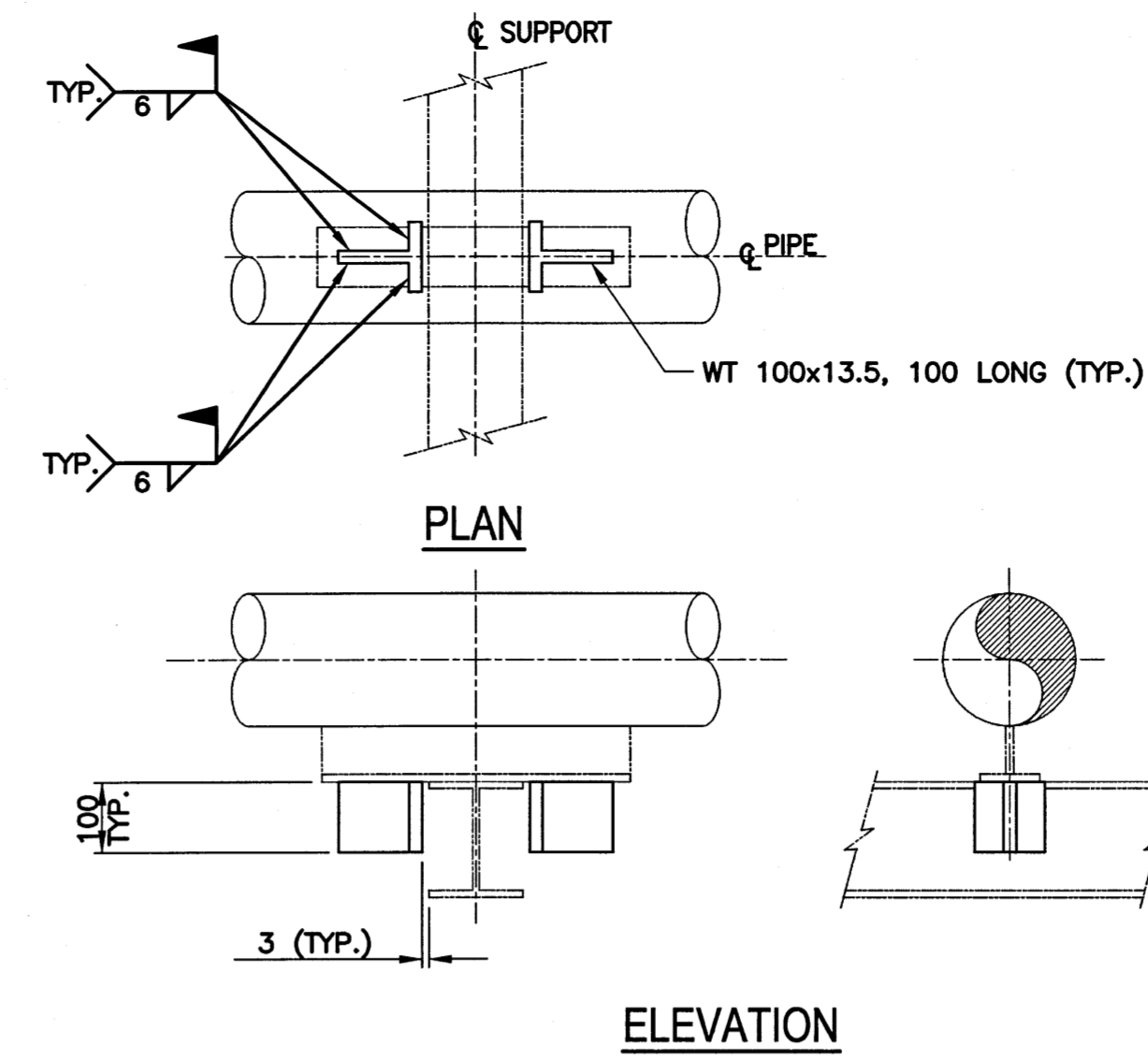
1. REFER TO SHEET 22 FOR MECHANICAL GENERAL NOTES.
2. ALL STRUCTURAL STEEL SHALL BE IN ACCORDANCE WITH G40.21-300W.
3. FABRICATE SHOE FROM W8X18.
4. FILLET WELD, TOTAL FILLET WELD FOR EACH SIDE TO BE EQUAL TO 1/3 LENGTH OF SHOE, APPROXIMATELY CENTERED.
5. ALL PIPE SUPPORTS SHALL BE HOT DIP GALVANIZED FOLLOWING FABRICATION.



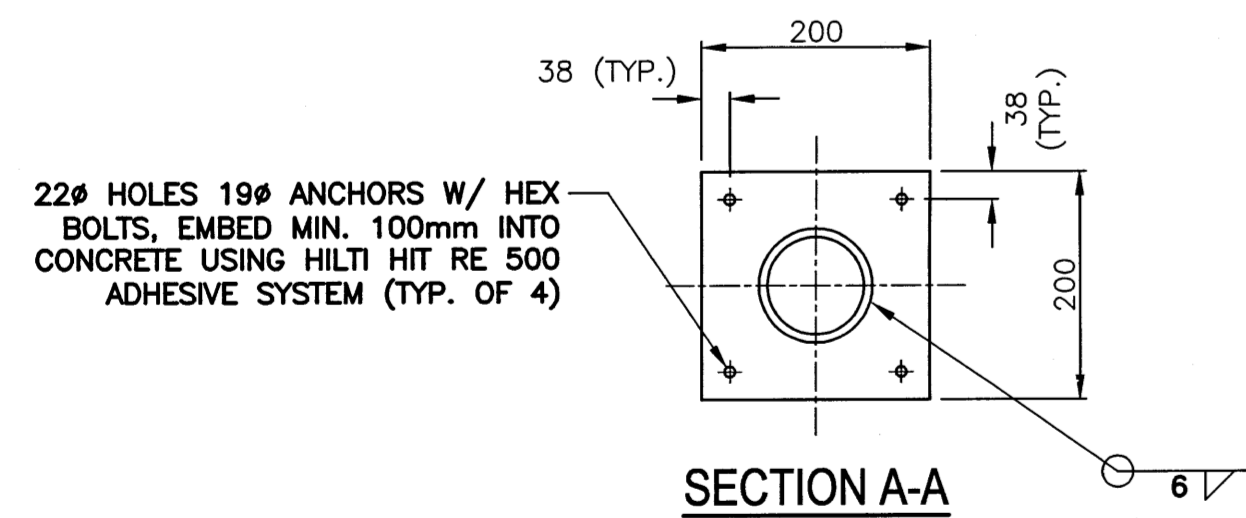
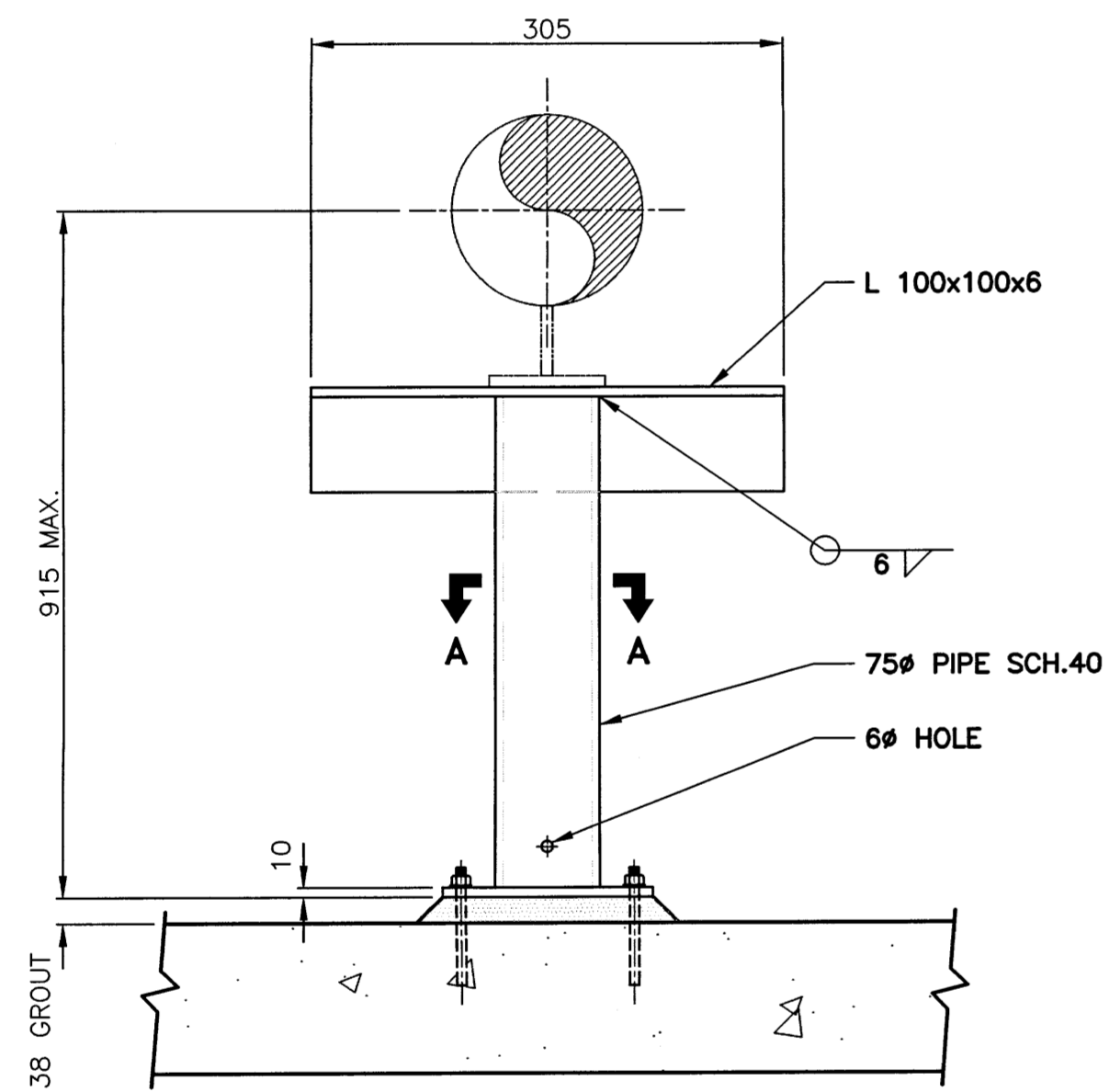
1 DETAIL - PIPE GUIDE (PS-1)
SCALE: N.T.S.



2 DETAIL - CLAMP ON SHOE (PS-2)
SCALE: N.T.S.



3 DETAIL - PIPE ANCHOR (PS-3)
SCALE: N.T.S.



4 DETAIL - BASE SUPPORT (PS-4)
SCALE: N.T.S.

FOR TENDER ONLY
NOT TO BE USED FOR CONSTRUCTION

METRIC

WHOLE NUMBERS INDICATE MILLIMETRES
DECIMALIZED NUMBERS INDICATE METRES



Certificate of Authorization
KGS Group
No. 245

| | |
|--|------|
| LOCATION APPROVED UNDERGROUND STRUCTURES | |
| SUPV. U/G STRUCTURES COMMITTEE | DATE |
| NOTE: LOCATION OF UNDERGROUND STRUCTURES AS SHOWN ARE BASED ON THE BEST INFORMATION AVAILABLE BUT NO GUARANTEE IS GIVEN THAT ALL EXISTING UTILITIES ARE SHOWN OR THAT THE GIVEN LOCATIONS ARE EXACT. CONFIRMATION OF EXISTENCE AND EXACT LOCATION OF ALL SERVICES MUST BE OBTAINED FROM THE INDIVIDUAL UTILITIES BEFORE PROCEEDING WITH CONSTRUCTION. | |

| | |
|--|-------------------|
| B.M. ELEV. | |
| CONSTRUCTION COMPLETION DATE: YYYY MM DD | |
| NO. | REVISIONS |
| 0 | ISSUED FOR TENDER |
| | DATE |
| | BY |

| | |
|---|--|
| KGS GROUP | |
| CONSULTING ENGINEERS & PROJECT MANAGERS | |
| WINNIPEG (204) 896-1209 THUNDER BAY (807) 345-2233 | |
| DESIGNED BY | MSK |
| CHECKED BY | MP |
| DRAWN BY | ML |
| APPROVED BY | MP |
| SCALE: | HORIZONTAL AS NOTED VERTICAL AS NOTED |
| RELEASED FOR CONSTRUCTION | |
| DATE | 2016 08 17 |
| DATE | |

| |
|---------------------------|
| ENGINEER'S SEAL |
| |
| CONSULTANT DRAWING NUMBER |
| 15-0107-014_M11 |

| | |
|---|---------------------|
| THE CITY OF WINNIPEG WATER AND WASTE DEPARTMENT ENGINEERING DIVISION | |
| BRADY ROAD RESOURCE MANAGEMENT FACILITY (BRRMF) DISPOSAL CELL CONSTRUCTION AND LEACHATE COLLECTION AND STORAGE (300,000 LITRE) TANK | |
| MECHANICAL DETAILS | |
| SHEET 32 OF 44 | CITY DRAWING NUMBER |
| 1-0400A-M0014-001 | |

BID OPPORTUNITY: 295-2017
CONTRACT NUMBER: 8

FILE PATH: P:\PROJECTS\2015\15-0107-014\DWG\MECH
FILE NAME: 15-0107-014_M11.dwg