

TK-1
LEACHATE STORAGE TANK
314 CU. M
6.82 M DIA. x 8.66 M H
DESIGN PRESS: ATMOSPHERIC
TEMP: 40°C

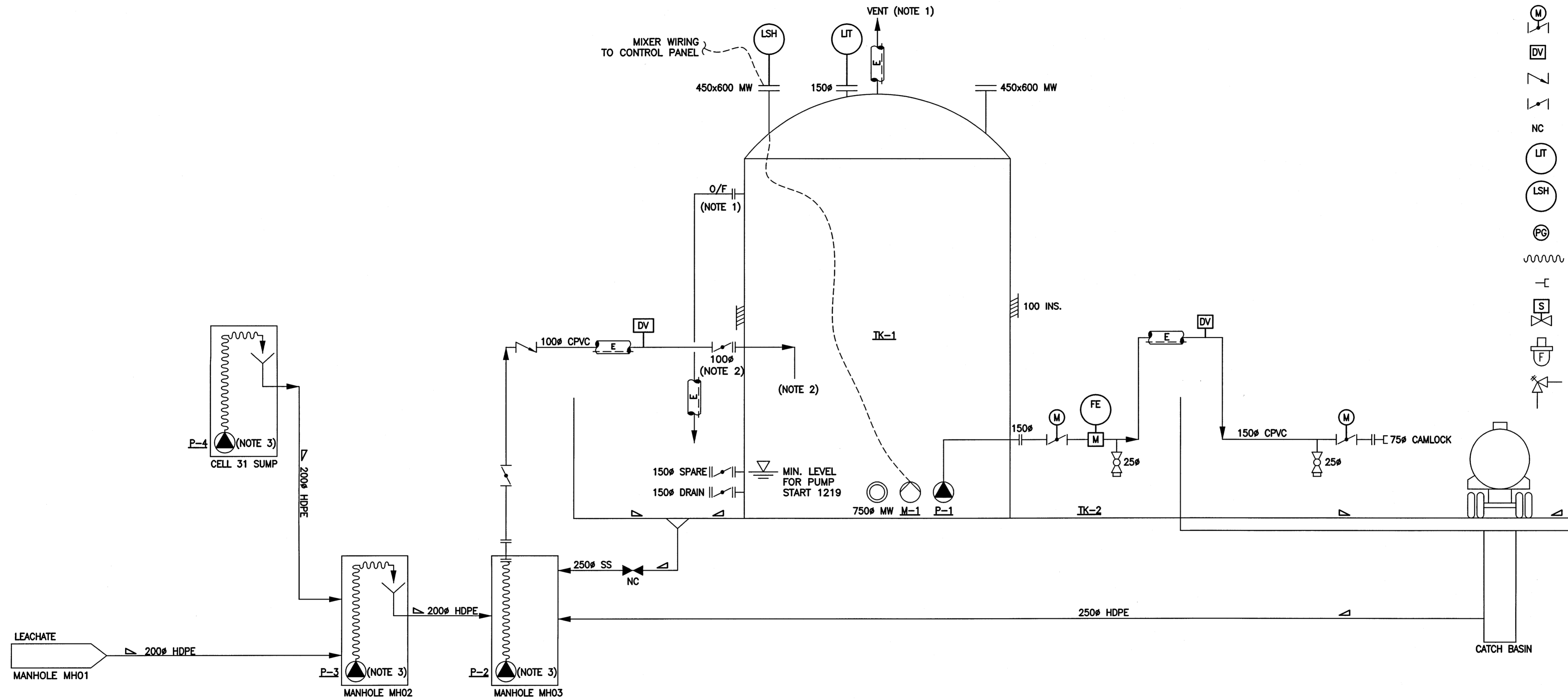
TK-2
LEACHATE TANK SECONDARY CONTAINMENT
507 CU. M
14.5 M DIA. x 3.08 M H

NOTES:

1. VENT AND OVERFLOW SIZED AND PROVIDED BY TANK SUPPLIER.
2. INTERNAL FEED PIPE BY TANK SUPPLIER.
3. REFER TO SHEET 34 FOR COMPRESSED AIR PIPING SCHEMATIC.

LEGEND:

- [M] FLOW METER
- [E] INSULATION - ELECTRICALLY TRACED
- [BV] BALL VALVE
- [M] ELECTRICALLY ACTUATED VALVE
- [DV] DEGASSING VALVE
- [Z] CHECK VALVE
- [FV] BUTTERFLY VALVE
- NC NORMALLY CLOSED
- [LT] LEVEL TRANSMITTER
- [LSH] HIGH LEVEL SWITCH
- [PG] PRESSURE GAUGE
- [H] HOSE
- [HC] HOSE CONNECTION
- [S] SOLENOID VALVE
- [F] FILTER
- [RV] RELIEF VALVE



P-4
CELL 31 SUMP
LEACHATE PUMP (PNEUMATIC)
38 L/MIN. @ 552 KPA AIR SUPPLY

P-3
MANHOLE MH02
LEACHATE PUMP (PNEUMATIC)
189 L/MIN. @ 552 KPA AIR SUPPLY

P-2
MANHOLE MH03
LEACHATE PUMP (PNEUMATIC)
341 L/MIN. @ 552 KPA AIR SUPPLY

M-1
LEACHATE TANK
MIXER
1/2 HP
230V / 1 PH / 60 HZ

P-1
LEACHATE LOADOUT PUMP
1500 L/MIN. @ 3.05M TDH
5 HP
230V / 1 PH / 60 HZ



Certificate of Authorization
KGS Group
No. 245

FOR TENDER ONLY
NOT TO BE USED FOR CONSTRUCTION

LOCATION APPROVED
UNDERGROUND STRUCTURES

SUPV. U/G STRUCTURES COMMITTEE DATE

NOTE:
LOCATION OF UNDERGROUND STRUCTURES AS SHOWN ARE BASED ON THE BEST INFORMATION AVAILABLE BUT NO GUARANTEE IS GIVEN THAT ALL EXISTING UTILITIES ARE SHOWN OR THAT THE GIVEN LOCATIONS ARE EXACT. CONFIRMATION OF EXISTENCE AND EXACT LOCATION OF ALL SERVICES MUST BE OBTAINED FROM THE INDIVIDUAL UTILITIES BEFORE PROCEEDING WITH CONSTRUCTION.

B.M. ELEV.	
CONSTRUCTION COMPLETION DATE: YYYY MM DD	
NO.	REVISIONS
0	ISSUED FOR TENDER
	06/15/2017
	DATE
	BY

KGS GROUP
CONSULTING ENGINEERS & PROJECT MANAGERS
WINNIPEG (204) 896-1209
THUNDER BAY (807) 345-2233

DESIGNED BY MSK
CHECKED BY [Signature]
DRAWN BY ML
APPROVED BY [Signature]

SCALE:
HORIZONTAL AS NOTED
VERTICAL AS NOTED

DATE 2016 08 17

RELEASED FOR CONSTRUCTION

DATE

ENGINEER'S SEAL
[Seal of M. Kozarsky, Member 23991, Professional Engineer, Manitoba]

CONSULTANT DRAWING NUMBER
15-0107-014_M12

THE CITY OF WINNIPEG
WATER AND WASTE DEPARTMENT
ENGINEERING DIVISION

BRADY ROAD RESOURCE MANAGEMENT FACILITY (BRRMF)
DISPOSAL CELL CONSTRUCTION AND
LEACHATE COLLECTION AND STORAGE (300,000 LITRE) TANK

MECHANICAL
LEACHATE PIPING SCHEMATIC

SHEET 33 OF 44
CITY DRAWING NUMBER
1-0400A-M0015-001