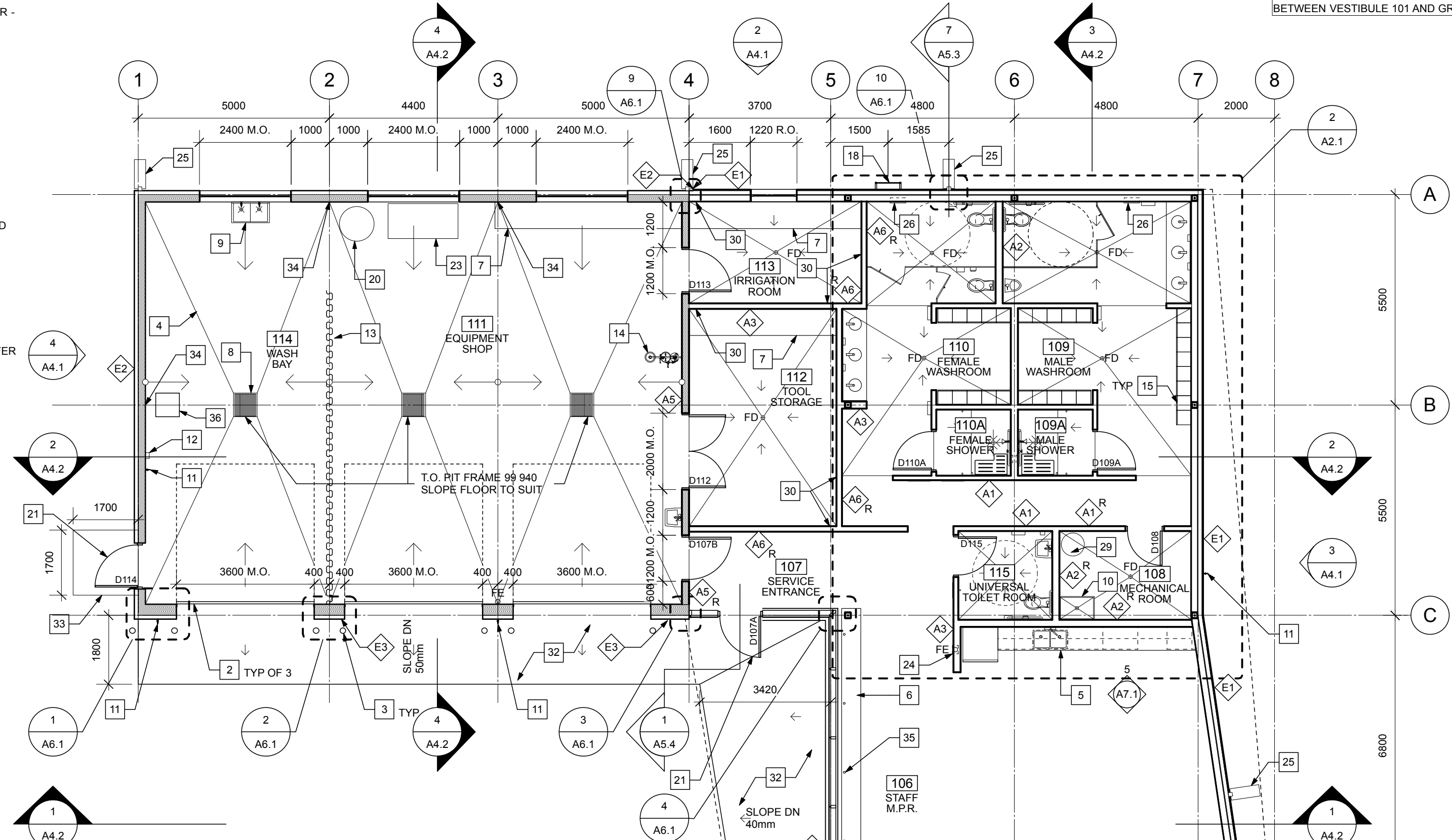
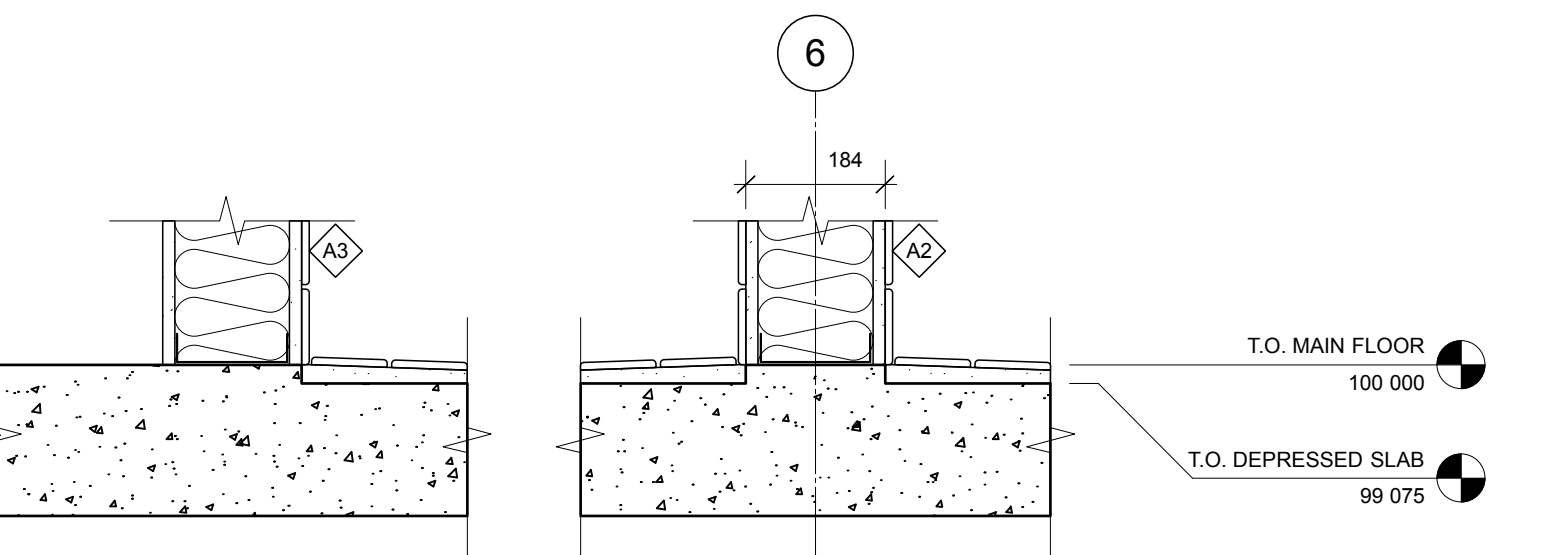


FLOOR PLAN KEYNOTES:

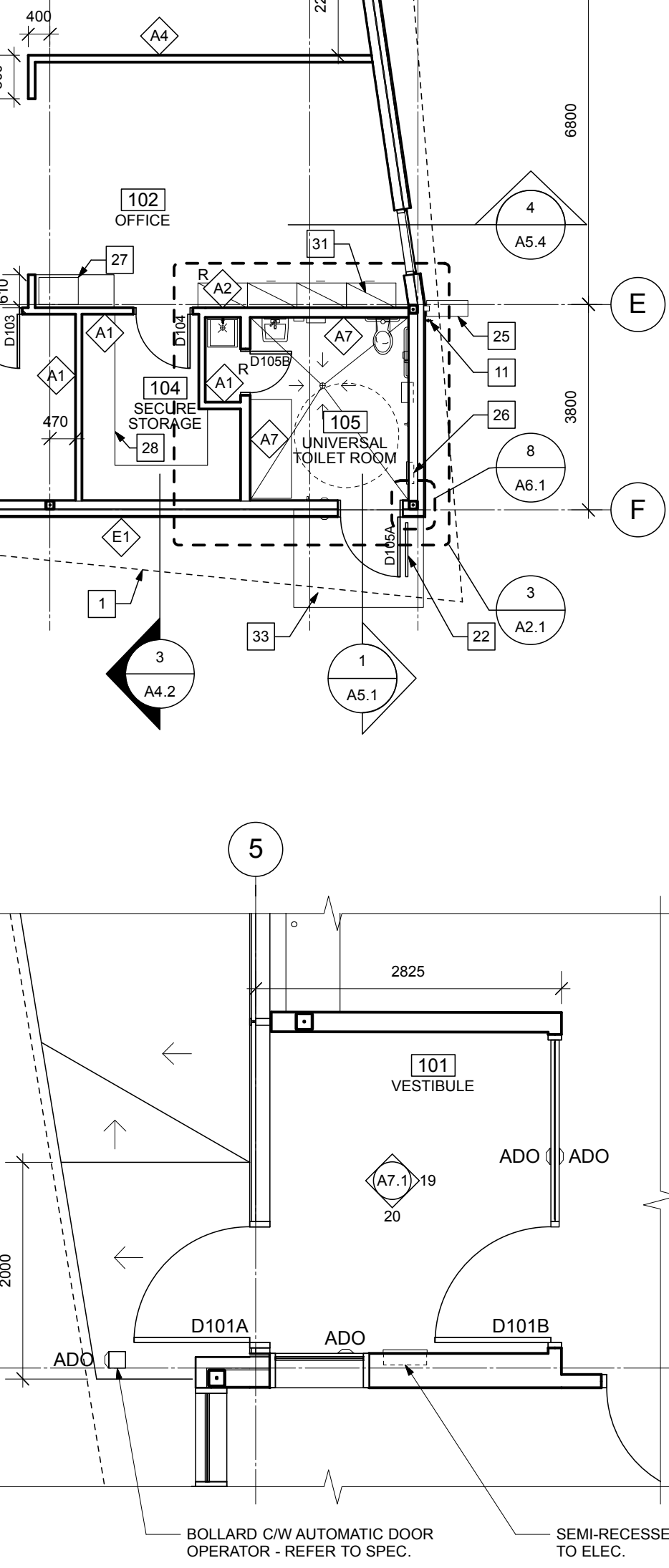
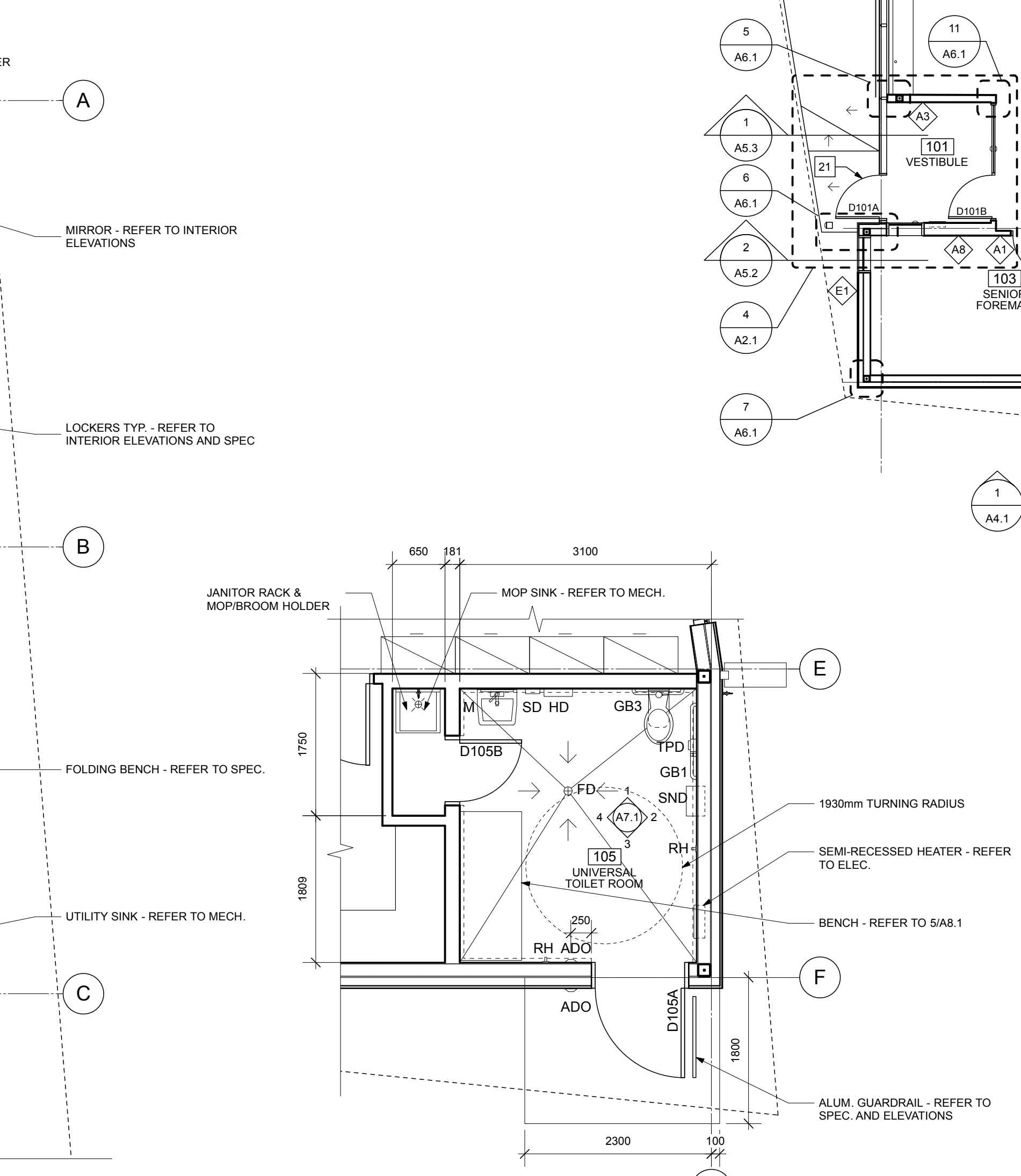
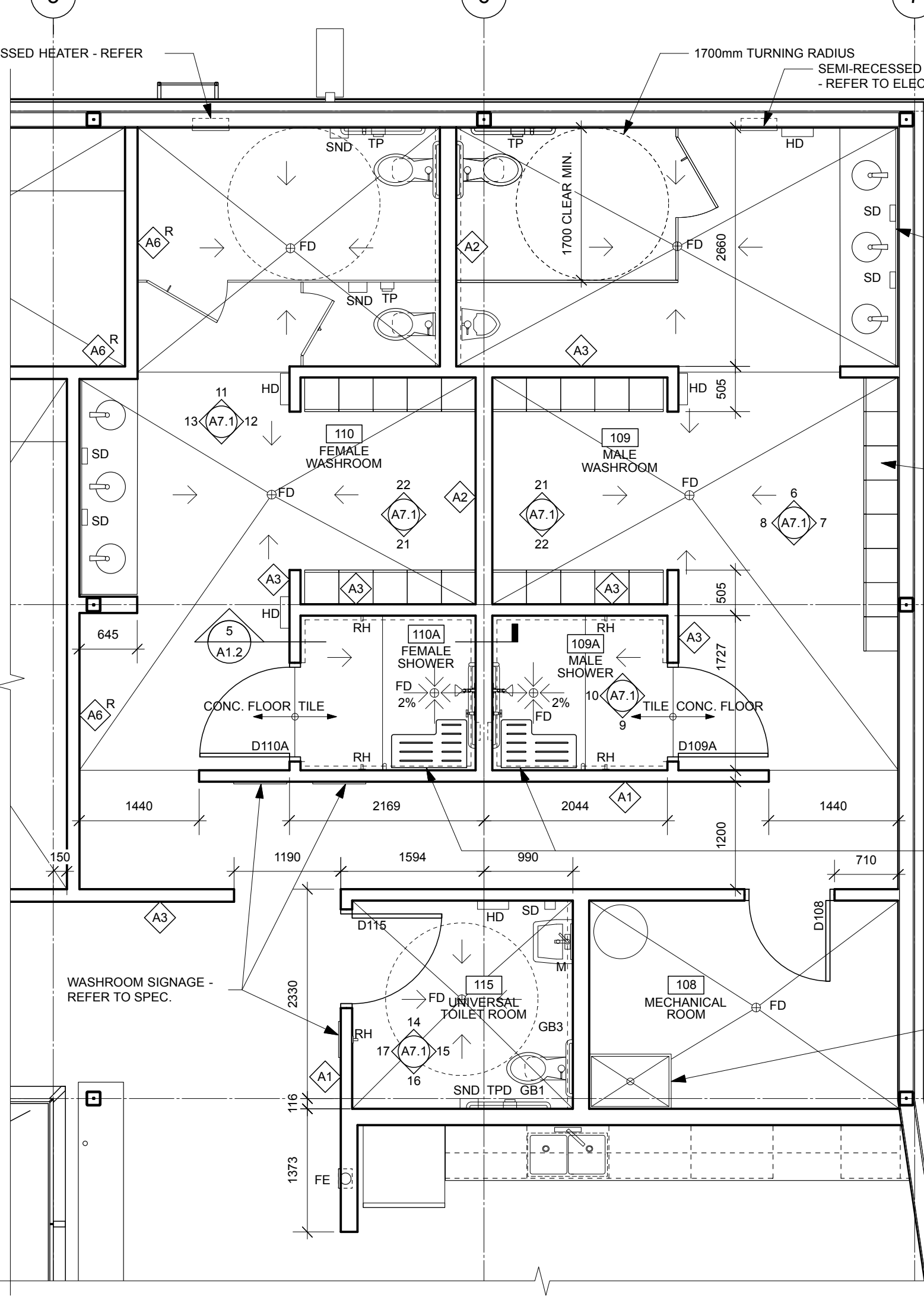
- 1 LINE OF OVERHANG ABOVE
- 2 OVER HEAD DOOR C/W MOTORIZED OPENER - REFER TO ELEC. AND SPEC.
- 3 150mm DIA. CONC. FILLED STL. BOLLARD (PTD.) - REFER TO DETAIL 4/A5.1 AND SPEC.
- 4 SLOPE FLOOR TO INTERCEPTOR PIT, TYP. SHOW THUS
- 5 KITCHEN MILLWORK C/W SINK - REFER TO SPEC. AND INT. ELEV.
- 6 MILLWORK - REFER TO DETAIL 3/A5.1
- 7 WORK BENCH BY CITY OF WINNIPEG - (N.I.C.)
- 8 INTERCEPTOR PIT, TYP. - REFER TO MECH.
- 9 STAINLESS STEEL UTILITY SINK - REFER TO MECH.
- 10 MOP SINK - REFER TO MECH.
- 11 HOSE BIBB - REFER TO MECH.
- 12 WATER FILL STATION C/W BACKFLOW PREVENTER - REFER TO MECH.
- 13 WASH BAY CURTAIN - REFER TO SPEC.
- 14 EMERGENCY SHOWER AND EYEWASH STATION - REFER TO MECH.
- 15 LOCKERS C/W SLOPED TOPS - REFER TO SPEC.
- 16 AUTOMATIC DOOR OPERATOR PROVIDE FINISHED BACK PANEL - REFER TO SPEC.
- 17 ROD & SHELF - REFER TO SPEC.
- 18 ROOF ACCESS LADDER - REFER TO SPEC. AND DETAIL 2/A5.4
- 19 STAINLESS STEEL BOLLARD C/W AUTOMATIC DOOR OPERATOR - REFER TO SPEC.
- 20 CITY OF WINNIPEG SUPPLIED AIR COMPRESSOR (N.I.C.) CONTRACTOR TO HOOK-UP - REFER TO ELEC. AND MECH.
- 21 CARDAC ON DOOR - REFER TO SPEC. AND ELEVATIONS
- 22 ALUM. GUARD - REFER TO SPEC. AND ELEVATIONS
- 23 FLAMMABLE CABINET BY CITY OF WINNIPEG (N.I.C.)
- 24 RECESSED FIRE EXTINGUISHER CABINET - REFER TO SPEC.
- 25 PRE-CAST CONC. SPLASH PAD - REFER TO SPEC.
- 26 SEMI-RECESSED FORCE FLOW HEATER - REFER TO MECH AND ELEC.
- 27 PRINTER BY CITY OF WINNIPEG (N.I.C.) - REFER TO ELEC.
- 28 FUTURE SHELVING BY CITY OF WINNIPEG (N.I.C.)
- 29 HOT WATER TANK - REFER TO MECH. AND ELEC.
- 30 19mm GOOD ONE SIDE PLYWOOD TO 102 400 ALL WALLS - REFER TO SPEC.
- 31 FILING CABINETS BY CITY OF WINNIPEG (N.I.C.)
- 32 CONCRETE APRON - REFER TO STRUCT.
- 33 CONCRETE PAD - REFER TO STRUCT.
- 34 MASONRY CONTROL JOINT TO ALIGN WITH GRID LINE
- 35 GROMMET - REFER TO SPEC.
- 36 OIL INTERCEPTOR - REFER TO MECH.

NOTE:
WINDOW BLINDS OR OBSTRUCTIONS ARE NOT PERMITTED AT THE WINDOWS ALONG GRID LINE '5' BETWEEN VESTIBULE 101 AND GRID LINE 'C'



5 SHOWER SECTION
SCALE: 1:10

1 FLOOR PLAN
SCALE: 1:100



2 ENLARGED FLOOR PLAN
SCALE: 1:50

3 ENLARGED FLOOR PLAN
SCALE: 1:50

4 ENLARGED FLOOR PLAN
SCALE: 1:50

WALL SCHEDULE

WALL TYPE GENERAL NOTES

1. FIRE-RATED WALL TYPE SYMBOLS ARE DESIGNATED WITH AN "R". REFER TO REFLECTED CEILING PLAN FOR LOCATION AND RATING OF FIRE RATED WALLS. FIRE RESISTANCE RATINGS (FRR) AND SOUND TRANSMISSION CLASSES (STC) ARE SHOWN FOR REFERENCE ONLY.
2. REFER TO ROOM FINISH SCHEDULE AND INTERIOR ELEVATIONS FOR WALL FINISHES.
3. ALL WALLS TO EXTEND TO UNDERSIDE OF FLOOR STRUCTURE OR DECK ABOVE UNLESS OTHERWISE NOTED. SEAL WITH ACOUSTIC CAULKING AT PERIMETER AND ALL PENETRATIONS. REFER TO DETAILS AND CEILING PLAN.
5. CONSTRUCT FIRE RATED WALLS TO UNDERSIDE OF DECK ABOVE.
6. ACOUSTIC INSULATION IN FIRE RATED WALLS TO BE MINERAL FIBRE PROCESSED FROM ROCK OR SLAG WITH A MASS OF AT LEAST 2.8 kg/m² FOR 89mm THICKNESS. REFER TO SPEC.
8. ACOUSTICALLY SEPARATE BACK TO BACK ELECTRICAL BOXES WHICH CANNOT BE SEPARATED BY MIN. 600mm (1 FULL STUD SPACE), AT EACH DOUBLE LAYER 16 GWS TO SIDE OF STUD FROM FLOOR TO 1200 HIGH. SEAL WITH ACOUSTIC CAULK ON BOTTOM AND SIDES.
9. ALL INTERIOR WALL DIMENSIONS TO OUTSIDE FACE OF GYPSUM BOARD / OUTSIDE FACE OF BLOCK. COORDINATE STUDS TO SLIP.
10. PROVIDE SLIP-JOINT FOR ALL FULL HEIGHT PARTITIONS. MAINTAIN FIRE RESISTANCE RATING WHERE REQUIRED.
11. OFFSET DOOR FRAMES 100mm FROM FACE OF WALL UNLESS OTHERWISE NOTED.

LEGEND REFER TO SPEC.

- FE FIRE EXTINGUISHER
- GB GRAB BAR
- RH ROBE HOOK
- TP TOILET PAPER HOLDER
- SND SANITARY NAPKIN DISPOSAL
- SD SOAP DISPENSER
- FD FLOOR DRAIN
- BCS BABY CHANGE STATION
- ADO AUTOMATIC DOOR OPERATOR
- HD HAND DRYER - REFER TO ELECTRICAL
- ← SLOPED FLOOR DIRECTION. SLOPE FLOOR 1/2% MINIMUM UNLESS OTHERWISE NOTED

WALL TYPES

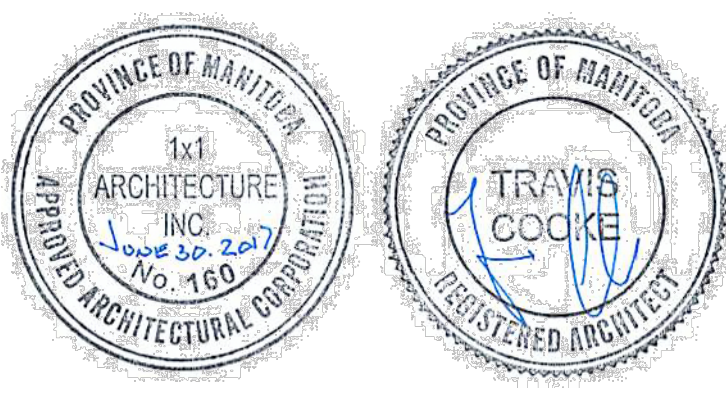
INTERIOR WALL TYPES:

- A1 (NBC WALL TYPE S4A) TH - 124mm
FRR - 1 HR (WHEN DESIGNATED)
STC - 48
• FINISH - SEE ROOM FINISH SCHEDULE
• 16 TYPE X GYPSUM BOARD
• 92 STEEL STUDS @ 400 O.C.
• 89 THICK ABSORPTIVE MATERIAL
• 16 TYPE X GYPSUM BOARD
• FINISH - SEE ROOM FINISH SCHEDULE
- A2 (NBC WALL TYPE S7A) TH - 184mm
FRR - 1 HR (WHEN DESIGNATED)
STC - 51
• FINISH - SEE ROOM FINISH SCHEDULE
• 16 TYPE X GYPSUM BOARD
• 152 STEEL STUDS @ 400 O.C.
• 150 ABSORPTIVE MATERIAL
• 16 TYPE X GYPSUM BOARD
• FINISH - SEE ROOM FINISH SCHEDULE
- A3 (NBC WALL TYPE S4A) TH - 184mm
FRR - 1 HR (WHEN DESIGNATED)
STC - 51
• FINISH - SEE ROOM FINISH SCHEDULE
• 16 TYPE X GYPSUM BOARD
• 152 STEEL STUDS @ 400 O.C.
• 16 TYPE X GYPSUM BOARD
• FINISH - SEE ROOM FINISH SCHEDULE
- A4 (NBC WALL TYPE S4A) TH - 124mm
FRR - 1 HR (WHEN DESIGNATED)
STC - 48
• FINISH - SEE ROOM FINISH SCHEDULE
• 16 TYPE X GYPSUM BOARD
• 92 STEEL STUDS @ 400 O.C.
• 16 TYPE X GYPSUM BOARD
• FINISH - SEE ROOM FINISH SCHEDULE
- A5 (NBC WALL TYPE S4A) TH - 190mm
FRR - 1.5 HR (WHEN DESIGNATED)
STC - 53
• FINISH - SEE ROOM FINISH SCHEDULE
• 193 CONCRETE MASONRY BLOCK
• FINISH - SEE ROOM FINISH SCHEDULE
- A6 (NBC WALL TYPE S5A) TH - 124mm
FRR - 1.5 HR (WHEN DESIGNATED)
STC - 53
• FINISH - SEE ROOM FINISH SCHEDULE
• 16 TYPE X GYPSUM BOARD
• 92 STEEL STUDS @ 400 O.C.
• 89 THICK ABSORPTIVE MATERIAL
• 2 LAYERS OF 16 TYPE X GYPSUM BOARD
• FINISH - SEE ROOM FINISH SCHEDULE
- A7 TH - 181mm
FRR - 1.5 HR (WHEN DESIGNATED)
STC - 53
• FINISH - SEE ROOM FINISH SCHEDULE
• 13 PLYWOOD (TO USE OF ROOF STRUCT.) (WASHROOM SIDE)
• 152 STEEL STUDS @ 400 O.C.
• 150 THICK ABSORPTIVE MATERIAL
• 16 TYPE X GYPSUM BOARD
• FINISH - SEE ROOM FINISH SCHEDULE
- A8 TH - 336mm
FRR - 1.5 HR (WHEN DESIGNATED)
STC - 53
• FINISH - SEE ROOM FINISH SCHEDULE
• 16 TYPE X GYPSUM BOARD
• 2 ROWS OF 152 STEEL STUDS @ 400 O.C.
• 16 TYPE X GYPSUM BOARD
• FINISH - SEE ROOM FINISH SCHEDULE

EXTERIOR WALL TYPES:

- E1 FRR - 1 HR (WHEN DESIGNATED)
(BATTEN AND BOARD WALL) TH - 316mm
• 8 CEMENT FIBRE BOARD X 400 WIDE VERT. BATTEN STRIPS
• 19x64 CEMENT FIBRE FURRING SPACERS
• 8 CEMENT FIBRE BOARD X 200 WIDE VERT. STRIPS
• 100 SEMI-RIGID INSULATION
• 100 HORIZONTAL ADJUSTABLE Z-BARS @ 600 O.C.
• SELF ADHESIVE A.V.B. MEMBRANE
• 16 PLYWOOD SHEATHING
• 152 STEEL STUDS @ 600 O.C.
• 16 TYPE X GYPSUM BOARD
• FINISH - SEE ROOM FINISH SCHEDULE
- E2 FRR - 1 HR (WHEN DESIGNATED)
(METAL CLAD WALL) TH - 290mm
• 22 GA STANDING SEAM METAL PANEL
• 100 ADJUSTABLE Z-BARS @ 600 O.C.
• 100 SEMI-RIGID INSULATION
• SELF ADHESIVE A.V.B. MEMBRANE
• 193 CONCRETE MASONRY BLOCK
• FINISH - SEE ROOM FINISH SCHEDULE
- E3 FRR - 1 HR (WHEN DESIGNATED)
(METAL CLAD WALL) TH - 390mm
• 22 GA STANDING SEAM METAL PANEL
• 100 ADJUSTABLE Z-BARS @ 600 O.C.
• 100 SEMI-RIGID INSULATION
• SELF ADHESIVE A.V.B. MEMBRANE
• 290 CONCRETE MASONRY BLOCK
• FINISH - SEE ROOM FINISH SCHEDULE
- E4 FRR - 1.5 HR (WHEN DESIGNATED)
(BATTEN AND BOARD WALL) TH - 316mm
• 8 CEMENT FIBRE BOARD X 400 WIDE VERT. BATTEN STRIPS
• 19x64 CEMENT FIBRE FURRING SPACERS
• 8 CEMENT FIBRE BOARD X 200 WIDE VERT. STRIPS
• 100 SEMI-RIGID INSULATION
• 100 HORIZONTAL ADJUSTABLE Z-BARS @ 600 O.C.
• SELF ADHESIVE A.V.B. MEMBRANE
• 16 TYPE X GYPSUM BOARD
• 152 STEEL STUDS @ 600 O.C.
• 2 LAYERS OF 16 TYPE X GYPSUM BOARD
• FINISH - SEE ROOM FINISH SCHEDULE

No.	DATE	REVISION / ISSUANCE
4	YY.MM.DD	-
3	YY.MM.DD	-
2	YY.MM.DD	-
1	YY.MM.DD	-
0	17.06.30	- ISSUED FOR CONSTRUCTION



Architect

Project

Sheet Title

x | architecture inc.
130 Fort Street, Suite 103 Winnipeg, Manitoba R3C 1C7 204 318 2010

Project: **KILDONAN PARK MAINTENANCE BUILDING**

Sheet Title: **MAIN FLOOR PLAN**

Project No.: 1559

Date: JUNE 30, 2017

Sheet: **A2.1**