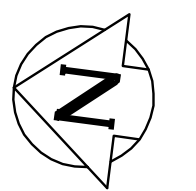
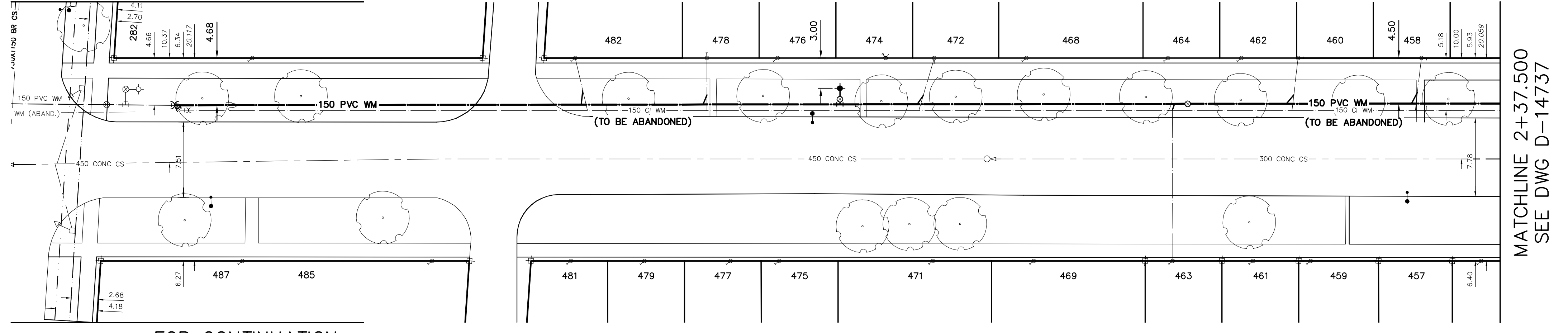


NOTE: CHAINAGES SHOWN ARE ALONG E. R. OF RUE RITCHOT.



FOR CONTINUATION SEE DWG D-14732

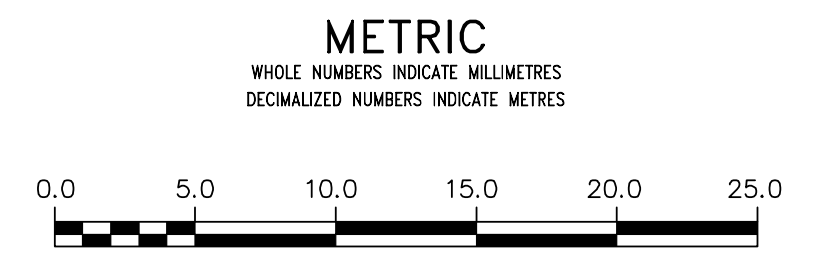
RUE RITCHOT



FOR WATER SERVICE TABLE SEE D-14737

NOTE: ALL VALVES TO BE INSTALLED CLOCKWISE TO CLOSE

FOR INDEX SEE D-14776



WARNING
IF POWER EQUIPMENT OR EXPLOSIVES ARE TO BE USED FOR EXCAVATION ON THIS PROJECT THE CONTRACTOR MUST:
1) NOTIFY THE GAS COMPANY OF THE PROPOSED LOCATION OF EXCAVATION.
2) TAKE PRECAUTION TO AVOID DAMAGE TO GAS COMPANY INSTALLATIONS.
SEE PROVINCIAL REGULATION 210/72 FOR DETAILS

LOCATION APPROVED UNDERGROUND STRUCTURES
SUPV. U/G STRUCTURES COMMITTEE DATE
NOTE:
LOCATION OF UNDERGROUND STRUCTURES AS SHOWN ARE BASED ON THE BEST INFORMATION AVAILABLE BUT NO GUARANTEE IS GIVEN THAT ALL EXISTING UTILITIES ARE SHOWN OR THAT THE GIVEN LOCATIONS ARE EXACT. CONFIRMATION OF EXISTENCE AND EXACT LOCATION OF ALL SERVICES MUST BE OBTAINED FROM THE INDIVIDUAL UTILITIES BEFORE PROCEEDING WITH CONSTRUCTION.

NO.	REVISIONS	DATE	BY

DESIGNED BY	TS	CHECKED BY	SC
DRAWN BY	RJ	APPROVED BY	KZ
SCALE:		RELEASED FOR CONSTRUCTION	
HORIZONTAL	1:250	KAS ZUREK	
VERTICAL	1:50		
DATE	2017 05 30	DATE	2017 05 30
PLOT DATE:	2017 05 30		

ENGINEER'S SEAL
ORIGINAL SIGNED BY S.J.R. COURNOYER 17/05/30
CONSULTANT DRAWING NUMBER

THE CITY OF WINNIPEG
WATER AND WASTE DEPARTMENT
ENGINEERING DIVISION
2017 WATER MAIN RENEWALS
CONTRACT 4A
RUE RITCHOT
HAMMEL AVENUE TO
138 S OF HAMMEL AVENUE

SHEET 10 OF 11
CITY DRAWING NUMBER
D-14736