

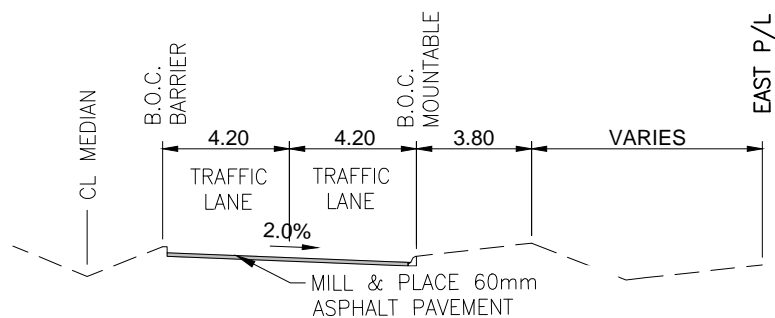
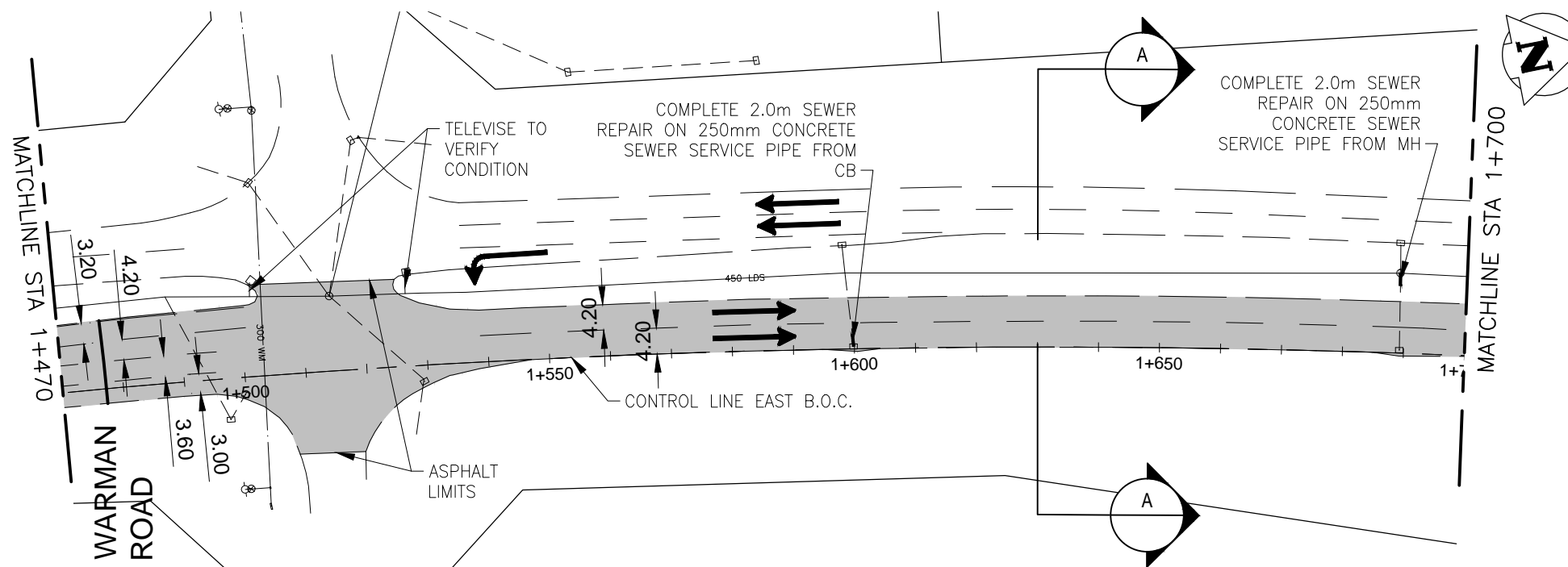
NOTES:

1. LOCATION OF EXISTING UTILITIES TO BE VERIFIED IN FIELD BY CONTRACTOR
2. MAINTAIN TRAFFIC AS OUTLINED IN THE TRAFFIC MANAGEMENT SPECIFICATION

CONSTRUCTION NOTES:

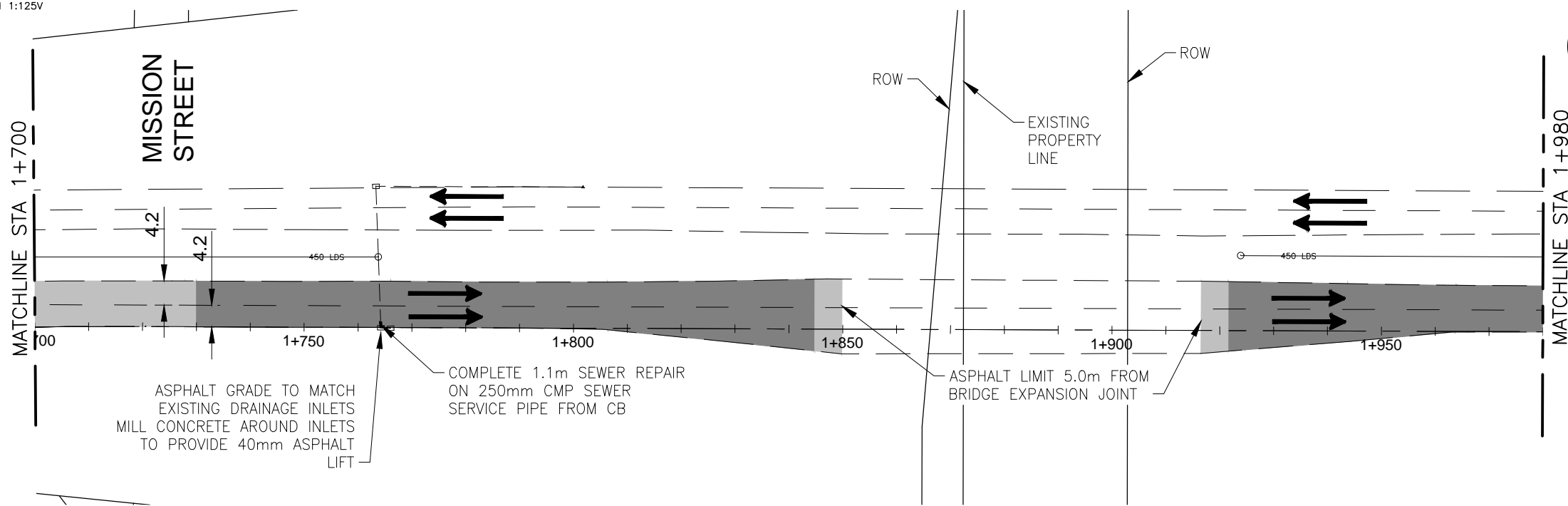
1. MILL EXISTING ASPHALT OVERLAY, AVERAGE DEPTH 60mm
2. COMPLETE FULL DEPTH CONCRETE PAVEMENT REPAIRS AND PARTIAL DEPTH PATCHING OF EXISTING JOINTS AS MARKED BY CONTRACT ADMINISTRATOR
3. COMPLETE BARRIER CURB & MOUNTABLE CURB RENEWALS AS MARKED BY THE CONTRACT ADMINISTRATOR
4. PLACE DETECTABLE WARNING SURFACE TILES WHERE INDICATED IN ACCORDANCE WITH CW3326, COMPLETE NEW RAMP CURB AS MARKED BY CONTRACT ADMINISTRATOR
5. COMPLETE DRAINAGE INLET SEWER SERVICE WORKS AS NOTED
6. COMPLETE ADJUSTMENTS OF PAVEMENT APPURTENANCES AS MARKED BY THE CONTRACT ADMINISTRATOR
7. PLACE 60mm (AVERAGE) ASPHALT OVERLAY
8. RADII CURB RENEWAL, AS MARKED BY THE CONTRACT ADMINISTRATOR, TO BE MODIFIED BARRIER CURB
9. ASPHALT GRADES WILL BE DETERMINED TWO WEEKS PRIOR TO CONSTRUCTION STARTUP OF THE STREET

LAGIMODIERE BOULEVARD



A TYPICAL SECTION
1:250H 1:125V

LAGIMODIERE BOULEVARD



METRIC
WHOLE NUMBERS INDICATE MILLIMETRES
DECIMALIZED NUMBERS INDICATE METRES

APEGM
Certificate of Authorization
Stantec Consulting Ltd.
No. 1301

ISSUED FOR TENDER 17.06.16

BOULEVARD SEEDING		MILL AND ASPHALT OVERLAY AREA	
CONCRETE		ASPHALT OVERLAY AREA	
		DETECTABLE TILES	

Stantec
Stantec Consulting Ltd.
WINNIPEG MANITOBA



CITY DRAWING NO.: P-3484-03	DRAWING NO.: C-102 SHT 3 OF 15
DATE 17.02.15	SCALE: 1:1000
DRAWN BY: G.P.	

2017 REGIONAL STREET PROGRAM
LAGIMODIERE BOULEVARD
STA 1+470 TO STA 1+980
MILL AND FILL