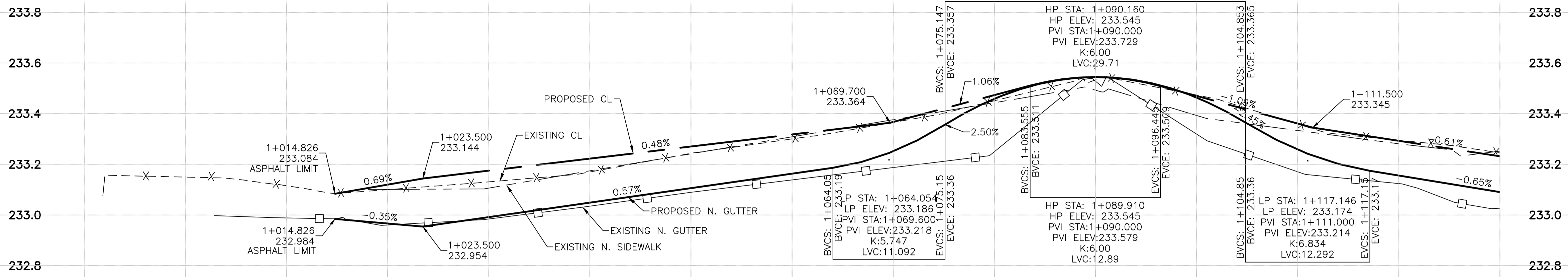
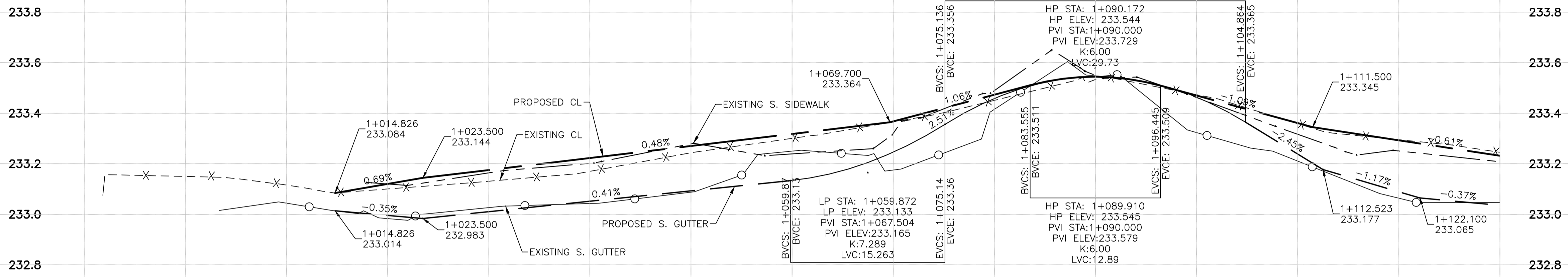


WESTBOUND



EASTBOUND



CONSTRUCTION NOTES: (REHABILITATION)

- DESIGN GRADES ARE TO BE CONFIRMED ONCE PLANING HAS BEEN COMPLETED.
- ADJUST ALL ROADWAY APPURTENANCES TO MATCH FINAL GRADES.
- ADJUST MANHOLES AND CATCHBASINS WITHIN THE ROADWAY 50mm BELOW FINAL GRADE TO ACCOMMODATE A RISER RING FOR FINAL PAVING OPERATIONS.
- MILL EXISTING OVERLAY REQUIRED DEPTH FOR 80mm (AVERAGE) ASPHALT PAVEMENT OVERLAY.
- COMPLETE CURB AND SIDEWALK RENEWAL WORKS. AREAS TO BE VERIFIED BY CONTRACT ADMINISTRATOR. MAINTAIN MINIMUM 2% SIDEWALK CROSSFALL UNLESS DIRECTED BY CONTRACT ADMINISTRATOR AND 100mm MINIMUM CURB REVEAL.
- COMPLETE DRAINAGE INLET WORKS AS NOTED.
- ALL CURB TO BE BARRIER CURB EXCEPT FOR RADI CURB RENEWAL TO BE MODIFIED BARRIER CURB AND RAMP CURB.
- COMPLETE ASPHALT LEVELLING OVER FULL DEPTH CONCRETE REPAIRS AS PER SPECIFICATIONS.
- PAVEMENT WIDENING: ASPHALT TO MATCH FINAL THICKNESS 200 REINFORCED CONCRETE PAVEMENT 75 - 20mm CRUSHED BASE COURSE 150 - 50mm CRUSHED SUBBASE SUBGRADE COMPACTION
- INSTALL HOOD & RUNGS IN CB'S WHERE REQUIRED.

GENERAL NOTES:

- MAINTAIN TRAFFIC AS OUTLINED IN THE TRAFFIC MANAGEMENT SPECIFICATION AND TRAFFIC CONTROL/CONSTRUCTION STAGING DRAWINGS.
- 200 WM RENEWAL BY OTHERS SEE STAGING DRAWINGS AND SPECIFICATIONS FOR SCHEDULE.
- TRAFFIC SIGNAL PLANT MODIFICATIONS AT ERIN ST. INTERSECTION BY CITY TRAFFIC SIGNALS DEPARTMENT.

METRIC

WHOLE NUMBERS INDICATE MILLIMETRES
DECIMALIZED NUMBERS INDICATE METRES

WARNING

IF POWER EQUIPMENT OR EXPLOSIVES ARE TO BE USED FOR EXCAVATION ON THIS PROJECT THE CONTRACTOR MUST:

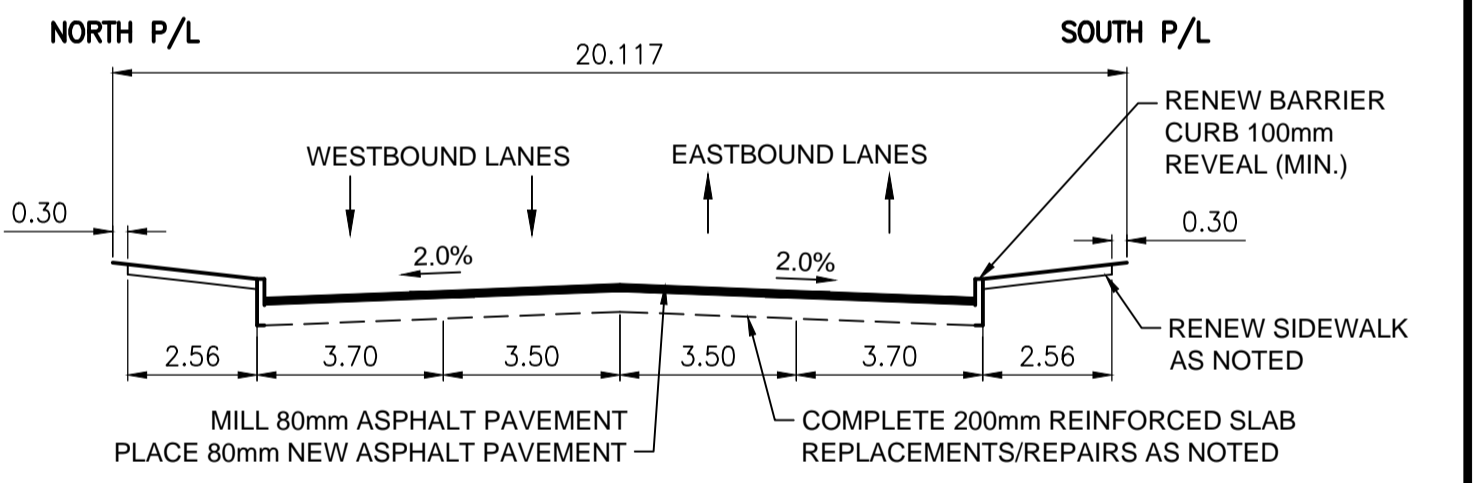
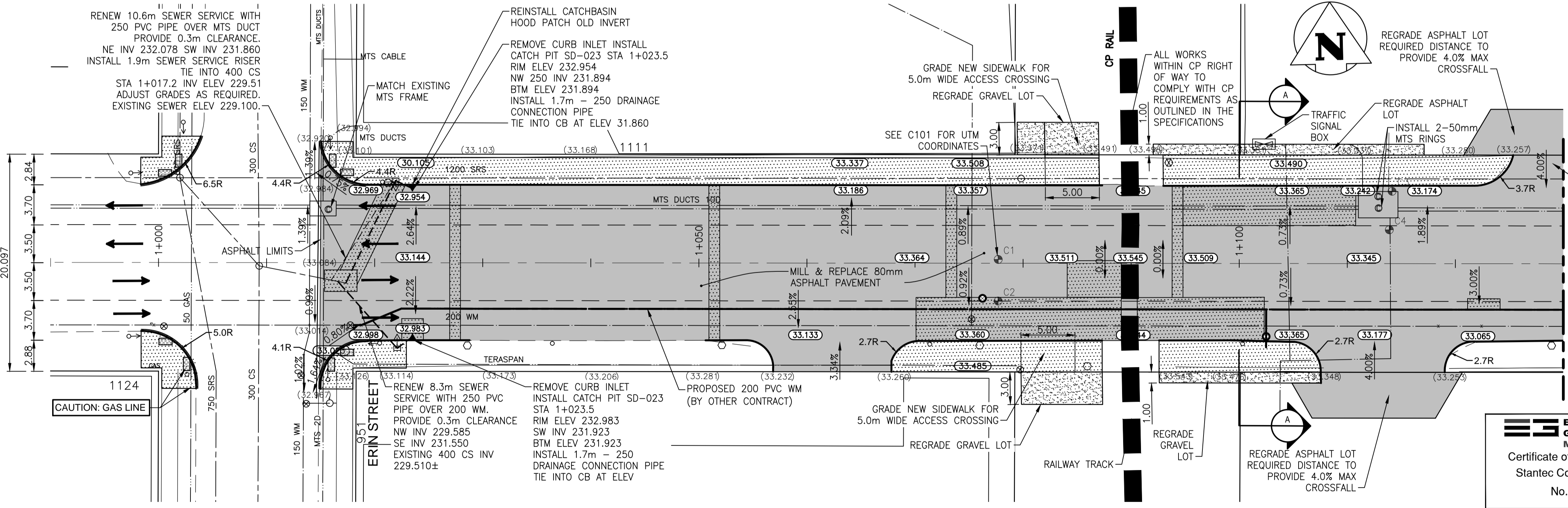
- NOTIFY THE GAS COMPANY OF THE PROPOSED LOCATION OF EXCAVATION.
- TAKE PRECAUTION TO AVOID DAMAGE TO GAS COMPANY INSTALLATIONS SEE PROVINCIAL REGULATION 210/72 FOR DETAILS.
- OBTAIN EXCAVATION PERMITS PRIOR TO CONSTRUCTION.

1+000

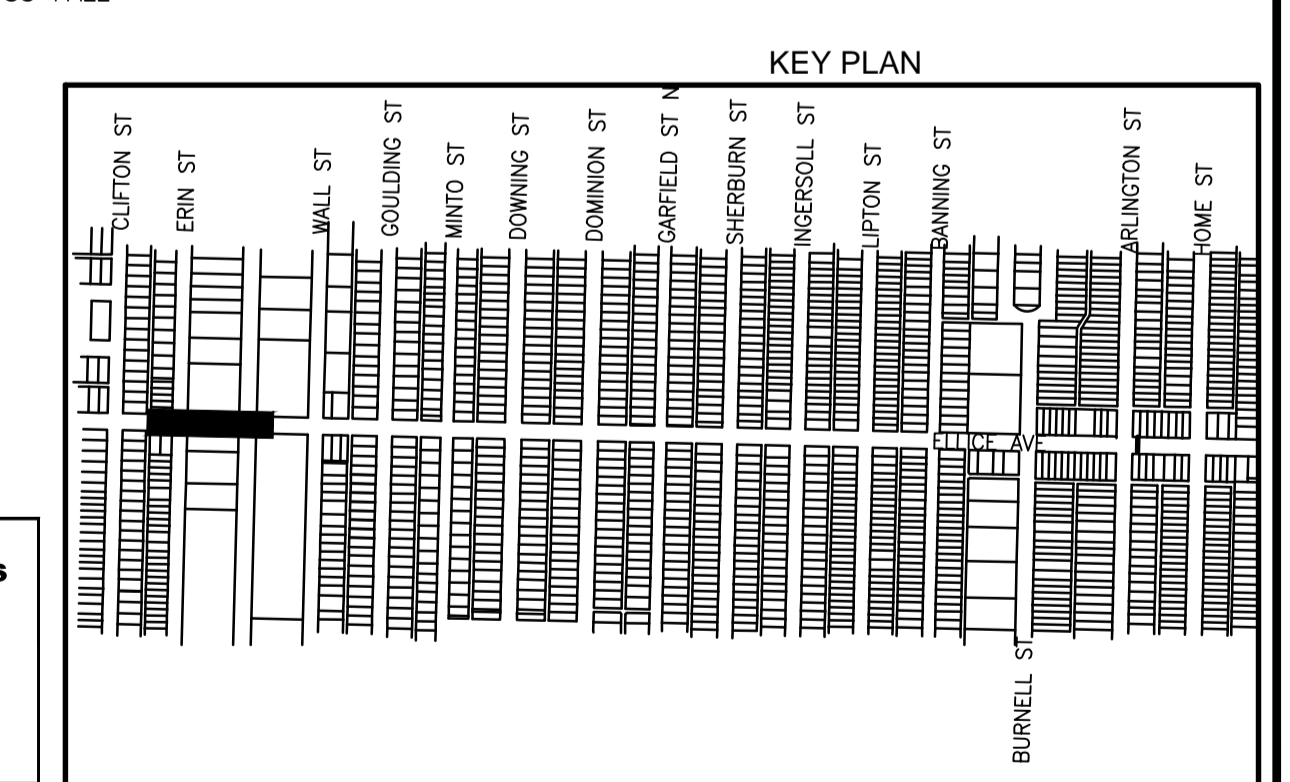
1+050

1+100

ELLICE AVE



REHABILITATION SECTION FROM ERIN ST. TO W. PL. OF DOMINION ST.



**ENGINEERS
GEOSCIENTISTS
MANITOBA**
Certificate of Authorization
Stantec Consulting Ltd.
No. 1301

150 WM	WATERMAIN	150 WM	150 WM	WATERMAIN	150 WM	HYDRO
±	HYDRANT, VALVE	±	±	HYDRANT	±	M.T.S.
300 LDS	LAND DRAINAGE SEWER	300 LDS	300 LDS	VALVE	300 LDS	CONCRETE
250 WWS	WASTE WATER SEWER	250 WWS	250 WWS	LAND DRAINAGE SEWER	250 WWS	MILL AND OVERLAY
×	PROFILE	×	×	WASTE WATER SEWER	250 WWS	CONCRETE SIDEWALK
○	NORTH OR WEST GUTTER	○	○	MANHOLE	○	HYDRO POLE
○	SOUTH OR EAST GUTTER	○	□	CATCH BASIN	○	SIGN
○	NORTH OR WEST R	○	▽	CURB INLET/CATCH PIT	▽	PROPERTY LINE
○	SOUTH OR EAST R	○	▽	CURB RENEWAL	▽	CORE HOLE
△	NORTH OR WEST DITCH	△	△	TRAFFIC SIGNAL	△	ELEVATION (32.515)
△	SOUTH OR EAST DITCH	△	△	GAS	△	SIDEWALK DETECTABLE
EXISTING	LEGEND-PROFILE	PROPOSED	EXISTING	LEGEND-PLAN	PROPOSED	EXISTING

LOCATION APPROVED UNDERGROUND STRUCTURES
SUPV. U/G STRUCTURES COMMITTEE DATE
NOTE:
LOCATION OF UNDERGROUND STRUCTURES AS SHOWN ARE BASED ON THE BEST INFORMATION AVAILABLE BUT NO GUARANTEE IS GIVEN THAT ALL EXISTING UTILITIES ARE SHOWN OR THAT THE GIVEN LOCATIONS ARE EXACT. CONFIRMATION OF EXISTENCE AND EXACT LOCATION OF ALL SERVICES MUST BE OBTAINED FROM THE INDIVIDUAL UTILITIES BEFORE PROCEEDING WITH CONSTRUCTION.

B.M. ELEV.			
1	ISSUED FOR TENDER	17.06.12	
0	ISSUED FOR REVIEW	17.05.30	
NO.	REVISIONS	DATE	BY

Stantec
500 - 311 Portage Avenue, Winnipeg MB
www.stantec.com

DESIGNED BY	D.L.	CHECKED BY	D.M.
DRAWN BY	G.P.	APPROVED BY	S.B.C.
HOR. SCALE:	1:250	RELEASED FOR CONSTRUCTION:	
VERTICAL:	1:10	DATE	2017.04.13

ENGINEER'S SEAL
PRELIMINARY DRAWING
NOT TO BE USED FOR CONSTRUCTION
CONSULTANT DRAWING NO. C201

THE CITY OF WINNIPEG
PUBLIC WORKS DEPARTMENT
ENGINEERING DIVISION

2017 REGIONAL STREET RENEWAL PROGRAM
ELLICE AVENUE
ERIN STREET TO ARLINGTON STREET
REHABILITATION

SHEET	8 OF 20
CAD FILE DRAWING NUMBER	07271c-201-xxx.dwg
CITY DRAWING NUMBER	P-3485-08

VA:\1370271\0300_drawing\0302_sheet_files\02_civil\07271c-201-xxx.dwg 2/14/2017 11:22 AM