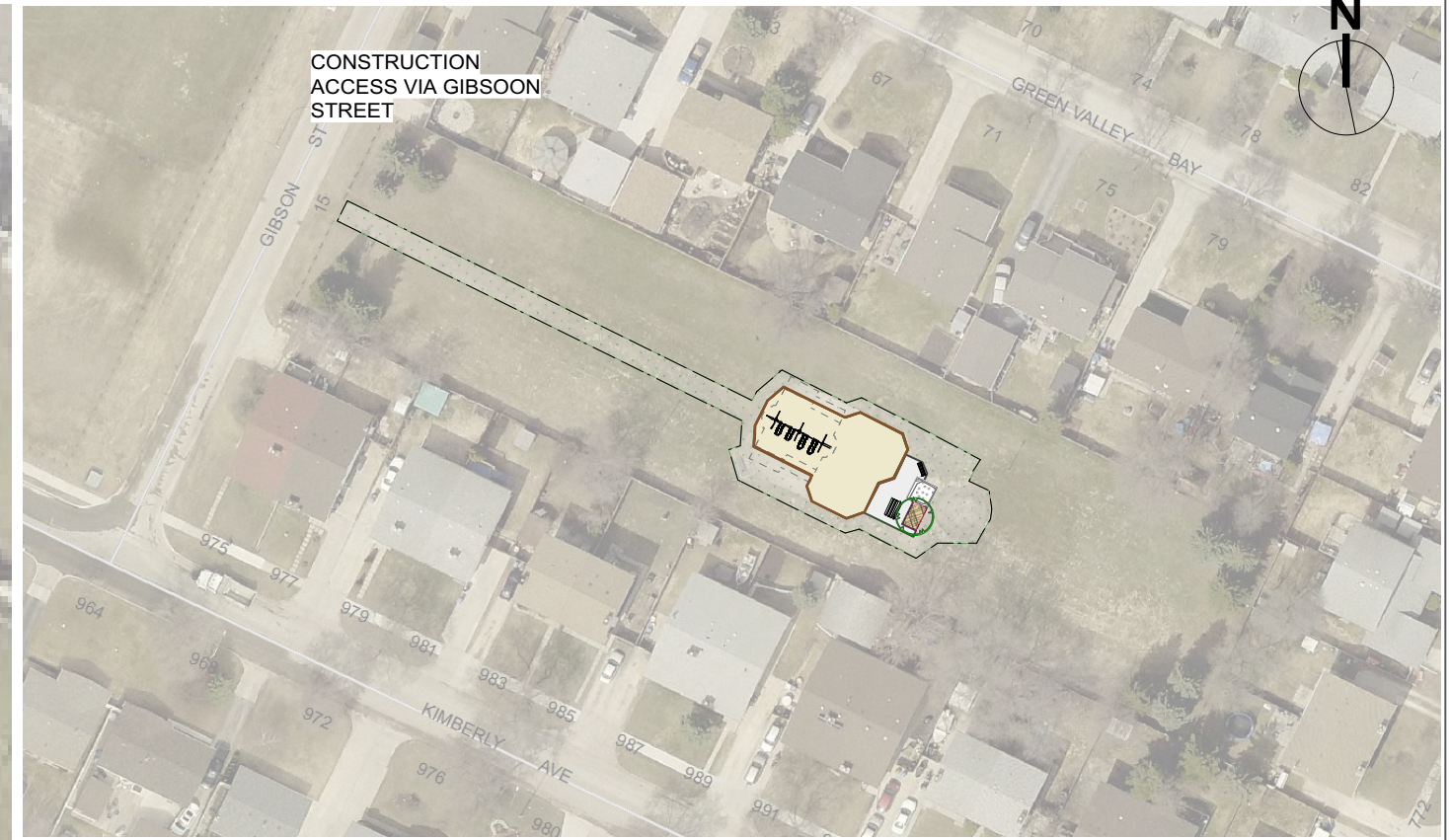




1:200



1:1000

- A** TOPSOIL AND SOD - 449 SM
- B** COMPACTED GRAVEL SEATING AREA - 40 SM
- C** "HARVEST GOLD" LINDEN - *TILIA MONGOLICA* "HARVEST GOLD"
- D** PAINTED WOOD SANDBOX
- E** WASTE RECEPTACLE
- F** COMPOSITE BENCH
- G** PICNIC TABLE
- H** 2-12 PLAY EQUIPMENT
- I** WOODCHIP MULCH
- J** 8' TALL SWINGSET
- K** EWF SAFETY SURFACING BUILT ON EXISTING PLAYSAND - 199 SM
- L** 2 TIER PT TIMBER EDGING W/ COMPOSITE CAP - 60 LM

CONTRACTOR TO CONFIRM ALL DIMENSIONS AND REPORT ANY DISCREPANCIES TO CONTRACT ADMINISTRATOR PRIOR TO CONSTRUCTION. LOCATION OF UNDERGROUND STRUCTURES AS SHOWN ARE BASED ON THE BEST INFORMATION AVAILABLE BUT NO GUARANTEE IS GIVEN THAT ALL EXISTING UTILITIES ARE SHOWN OR THAT THE GIVEN LOCATIONS ARE EXACT. CONFIRMATION OF EXISTENCE AND EXACT LOCATION OF ALL SERVICES MUST BE OBTAINED FROM THE INDIVIDUAL UTILITIES BEFORE PROCEEDING WITH CONSTRUCTION.

 <p>THE CITY OF WINNIPEG Planning, Property and Development Department Planning and Land Use Division Unit 15 - 30 Fort Street, Winnipeg, MB, (R3C 4X5)</p>	DESIGNED BY	IM	CHECKED BY		DRAWING TITLE <b>Green Valley Park Playground Redevelopment Proposed</b>	DRAWING NO. <b>G.027-1</b>	
	DRAWN BY	IM	APPROVED BY	MANAGER, PARK AND OPEN SPACES			DATE
	HORIZ. SCALE	As Indicated			MANAGER, PLANNING AND LAND USE DIVISION	SITE ADDRESS 15 Gibson St.	BID OPPORTUNITY NO. <b>515-2017</b>
	DATE	June 2017					