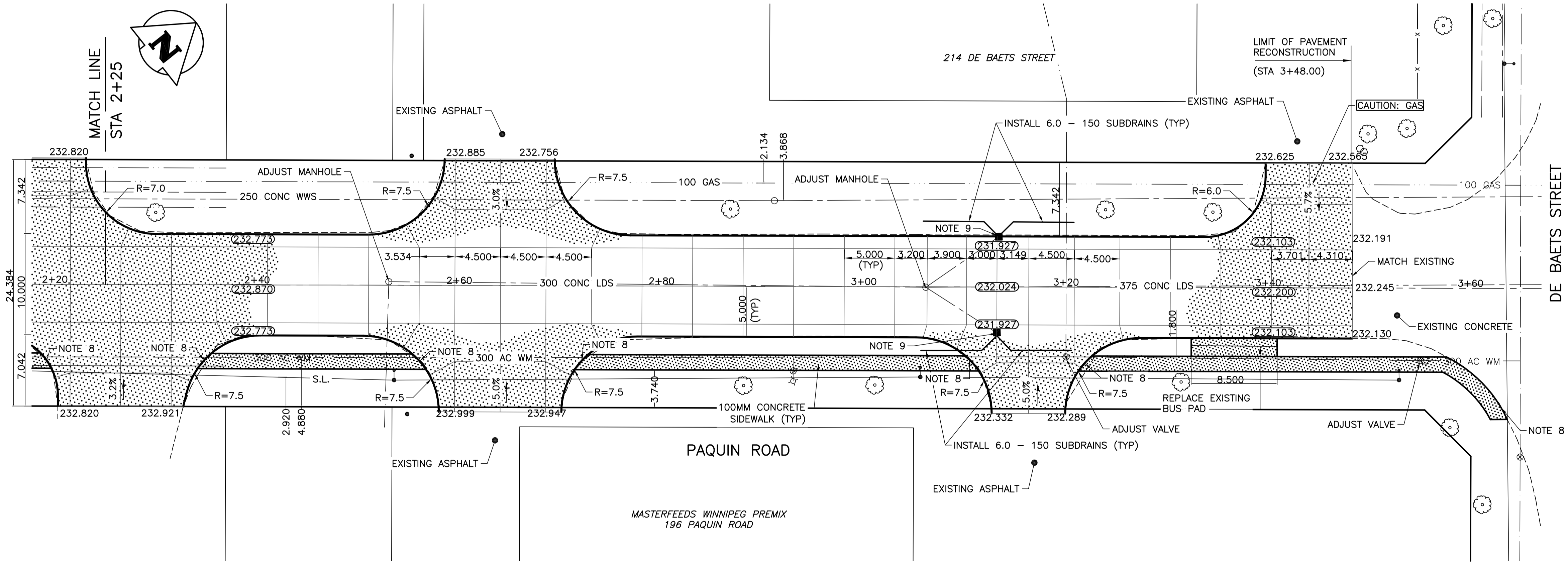


PAQUIN ROAD - PROFILE

- NOTES:**
1. ALL MEASUREMENTS TO BACK OF CURB.
 2. ALL EXISTING TREES TO BE PROTECTED AND MAINTAINED THROUGHOUT CONSTRUCTION.
 3. ALL BUS STOPS WITHIN LIMITS OF CONSTRUCTION TO BE TEMPORARILY RELOCATED BY OTHERS DURING WORKS.
 4. HAND OR SOFT DIG METHODS REQUIRED OVER ALL UTILITIES AT INTERVALS DETERMINED BY THE ENGINEER TO DETERMINE DEPTH OF COVER.
 5. NO WORKS, INCLUDING CONCRETE CUTTING OR BREAKING, TO BE UNDERTAKEN NEAR GAS LINES UNTIL DEPTH OF COVER IS DETERMINED AND A MB HYDRO SAFETY WATCH IS ON SITE.
 6. ANY GAS MAINS OR SERVICES EXPOSED IN THE EXCAVATION AREA TO BE ROCK WRAPPED IN ACCORDANCE WITH MB HYDRO STANDARDS PRIOR TO WORK PROCEEDING ON SITE.
 7. NO VIBRATORY COMPACTION PERMITTED WITHIN 1M OF GAS MAINS.
 8. CONSTRUCT NEW MONOLITHIC CURB RAMP (10mm HEIGHT INTEGRAL)
 9. REPLACE EXISTING SD-24 CATCHBASIN INSTALL BARRIER CURB AND GUTTER INLET FRAME (AP-008) AND AND INLET COVER (AP-008) AND REPLACE 250 LEAD @ 2% MINIMUM GRADE.
 10. TRANSVERSE JOINTS SPACED AT 5.0 INTERVALS UNLESS OTHERWISE NOTED.

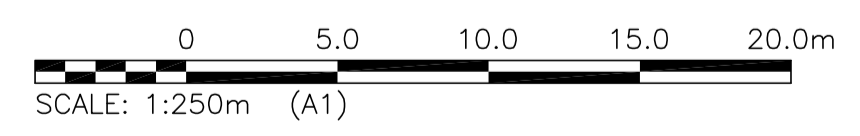


PAQUIN ROAD - PLAN

PROPERTY LIMITS DELINEATION
 DELINEATION OF PROPERTY LIMITS AS SHOWN ON THIS DWG DOES NOT REPRESENT A "LEGAL SURVEY". KGS GROUP MAKES NO REPRESENTATION OR WARRANTY AS TO THE ACCURACY OF PROPERTY LIMITS DELINEATED ON THIS DWG, NOR ON THE DIMENSIONAL ACCURACY OF DWG FEATURES RELATIVE TO THOSE PROPERTY LIMITS.

WARNING
 NOTIFY THE GAS COMPANY OF THE PROPOSED LOCATION OF EXCAVATION. TAKE PRECAUTION TO AVOID DAMAGE TO GAS COMPANY INSTALLATIONS. SEE PROVINCIAL REGULATION 210/72 FOR DETAILS.

METRIC
 WHOLE NUMBERS INDICATE MILLIMETRES
 DECIMALIZED NUMBERS INDICATE METRES



PRELIMINARY
 NOT TO BE USED FOR CONSTRUCTION

P:\PROJECTS\2016\16-0107-003\DWG\MUN\CORRYDON_CALL.dwg
 PLOT 1:1 (A-1)

EXISTING	LEGEND-PLAN	PROPOSED	EXISTING	LEGEND-PLAN	PROPOSED	EXISTING	LEGEND-PROFILE	PROPOSED
300 LDS	LAND DRAINAGE SEWER	300 LDS	TEST HOLE			---	Q PROFILE	
250 WWS	WASTE WATER SEWER	250 WWS	GUY WIRE			---	N/W LANE EDGE	
---	GAS	---	LIGHT STANDARD			---	S/E LANE EDGE	
---	HYDRO	---	BACK OF CURB			---	N/W LANE P	
---	M.T.S.	---	CONCRETE			---	S/E MEDIAN Q	
150 WM	WATERMAIN	150 WM	ASPHALT			---	PARKING/DRIVEWAY	
+	HYDRANT	+	SIDEWALK			---	WINDOW/DOOR SILL	
o	VALVE	o	PROPERTY LINE			---		
o	MANHOLE	o	SURVEY BAR			---		
o	CATCH BASIN	o	GEODETIC BENCHMARK			---		
o	CURB INLET	o	ELEVATION			---		
o	POLES	o				---		

LOCATION APPROVED UNDERGROUND STRUCTURES

B.M. KGS_BASE
 ELEV. 249.213

COORDINATE SYSTEM: CGV28

DESIGNED BY: AKW
 CHECKED BY: []

DRAWN BY: AKW
 APPROVED BY: []

HOR. SCALE: 1:250
 VERTICAL: 1:10

RELEASSED FOR CONSTRUCTION: []

DATE: 17/04/18

NO. REVISIONS: []

DATE: []

BY: []

KGS GROUP CONSULTING ENGINEERS

ENGINEER'S SEAL

PROJECT TITLE: 2017 INDUSTRIAL STREETS PACKAGE

CONSULTANT DRAWING NO. C103

DATE: 17/04/18

THE CITY OF WINNIPEG PUBLIC WORKS DEPARTMENT ENGINEERING DIVISION

2017 INDUSTRIAL STREETS PACKAGE

PAQUIN ROAD PLAN/PROFILE

STA 2+25 TO DE BAETS STREET

SHEET 03 OF 26

COMPUTER FILE NAME: ST BONIFACE_DESIGN.DWG

CITY DRAWING NUMBER: []