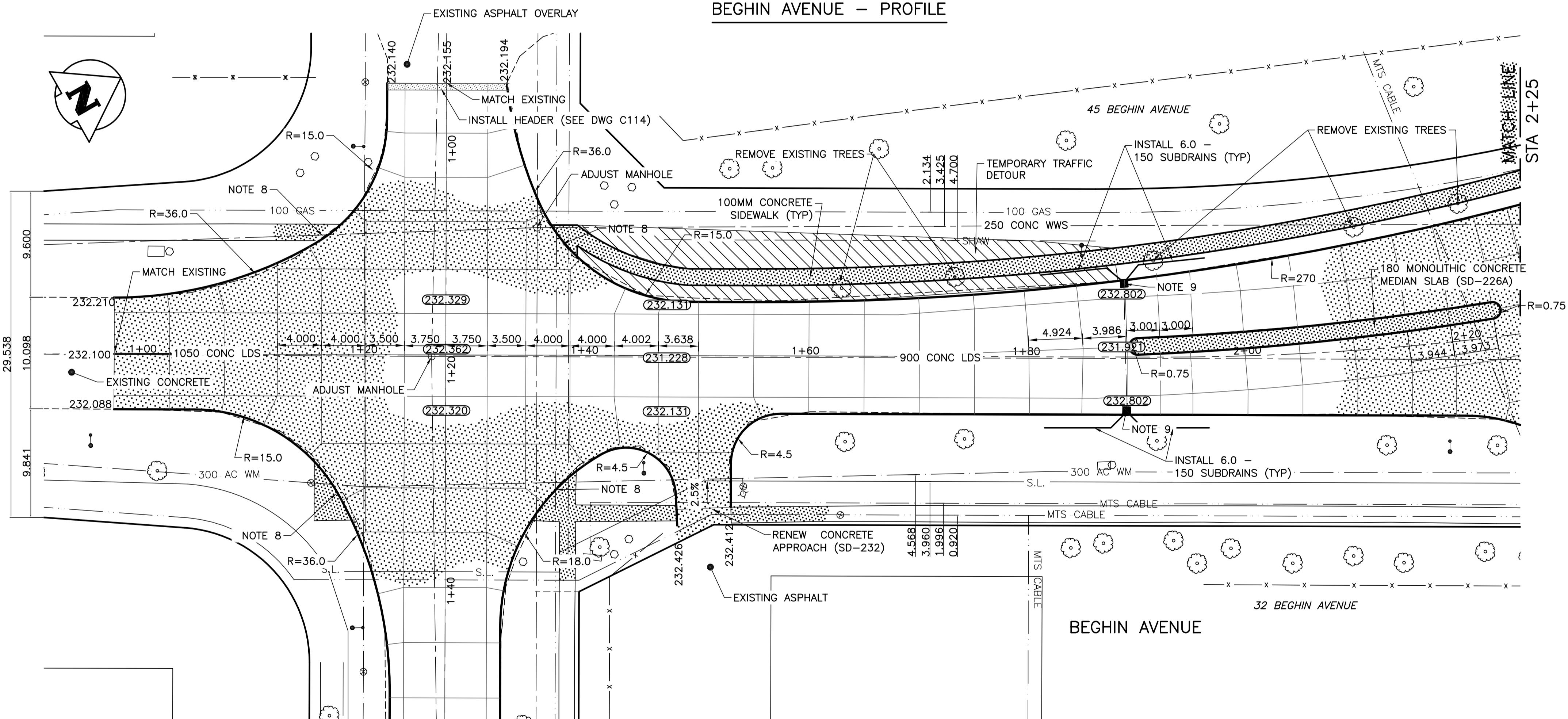


BEGHIN AVENUE - PROFILE



BEGHIN AVENUE - PLAN

NOTES:

1. ALL MEASUREMENTS TO BACK OF CURB.
2. ALL EXISTING TREES TO BE PROTECTED AND MAINTAINED THROUGHOUT CONSTRUCTION.
3. ALL BUS STOPS WITHIN LIMITS OF CONSTRUCTION TO BE TEMPORARILY RELOCATED BY OTHERS DURING WORKS.
4. HAND OR SOFT DIG METHODS REQUIRED OVER ALL UTILITIES AT INTERVALS DETERMINED BY THE ENGINEER TO DETERMINE DEPTH OF COVER.
5. NO WORKS, INCLUDING CONCRETE CUTTING OR BREAKING, TO BE UNDERTAKEN NEAR GAS LINES UNTIL DEPTH OF COVER IS DETERMINED AND A MB HYDRO SAFETY WATCH IS ON SITE.
6. ANY GAS MAINS OR SERVICES EXPOSED IN THE EXCAVATION AREA TO BE ROCK WRAPPED IN ACCORDANCE WITH MB HYDRO STANDARDS PRIOR TO WORK PROCEEDING ON SITE.
7. NO VIBRATORY COMPACTION PERMITTED WITHIN 1M OF GAS MAINS.
8. CONSTRUCT NEW MONOLITHIC CURB RAMP (10mm HEIGHT INTEGRAL).
9. REPLACE EXISTING SD-24 CATCHBASIN INSTALL BARRIER CURB AND GUTTER INLET FRAME (AP-008) AND AND INLET COVER (AP-008) AND REPLACE 250 LEAD @ 2% MINIMUM GRADE.
10. TRANSVERSE JOINTS SPACED AT 5.0 INTERVALS UNLESS OTHERWISE NOTED.

PROPERTY LIMITS DELINEATION

DELINEATION OF PROPERTY LIMITS AS SHOWN ON THIS DWG DOES NOT REPRESENT A "LEGAL SURVEY". KGS GROUP MAKES NO REPRESENTATION OR WARRANTY AS TO THE ACCURACY OF PROPERTY LIMITS DELINEATED ON THIS DWG, NOR ON THE DIMENSIONAL ACCURACY OF DWG FEATURES RELATIVE TO THOSE PROPERTY LIMITS.

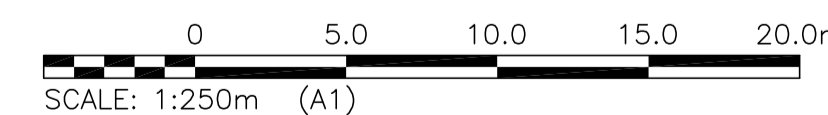
WARNING

NOTIFY THE GAS COMPANY OF THE PROPOSED LOCATION OF EXCAVATION. TAKE PRECAUTION TO AVOID DAMAGE TO GAS COMPANY INSTALLATIONS. SEE PROVINCIAL REGULATION 210/72 FOR DETAILS.

METRIC

WHOLE NUMBERS INDICATE MILLIMETRES
DECIMALIZED NUMBERS INDICATE METRES

PRELIMINARY
NOT TO BE USED FOR CONSTRUCTION



300 LDS	LAND DRAINAGE SEWER	300 LDS		TEST HOLE			
250 WWS	WASTE WATER SEWER	250 WWS		GUY WIRE			
---	GAS	---		LIGHT STANDARD			
---	HYDRO	---		BACK OF CURB			
---	M.T.S.	---		CONCRETE			
150 WM	WATERMAIN	150 WM		ASPHALT			
+	HYDRANT	+		SIDEWALK			
o	VALVE	o		PROPERTY LINE			
o	MANHOLE	o		SURVEY BAR			
□	CATCH BASIN	□		GEODETIC BENCHMARK			
▽	CURB INLET	▽		ELEVATION			
•	POLES	•					
•	EXISTING	•					
---	LEGEND-PLAN	---					
---	PROPOSED	---					
---	EXISTING	---					
---	LEGEND-PROFILE	---					
---	PROPOSED	---					
---	EXISTING	---					

LOCATION APPROVED UNDERGROUND STRUCTURES

SUPV. U/G STRUCTURES COMMITTEE DATE

NOTE:
LOCATION OF UNDERGROUND STRUCTURES AS SHOWN ARE BASED ON THE BEST INFORMATION AVAILABLE BUT NO GUARANTEE IS GIVEN THAT ALL EXISTING UTILITIES ARE SHOWN OR THAT THE GIVEN LOCATIONS ARE EXACT. CONFIRMATION OF EXISTENCE AND EXACT LOCATION OF ALL SERVICES MUST BE OBTAINED FROM THE INDIVIDUAL UTILITIES BEFORE PROCEEDING WITH CONSTRUCTION.

B.M. KGS_BASE	ELEV. 249.213	COORDINATE SYSTEM: CGVD28
NO.	REVISIONS	DATE BY
B	ISSUED FOR TENDER	17/06/20
A	ISSUED FOR REVIEW	17/06/12

		DESIGNED BY	AKW	CHECKED BY	
		DRAWN BY	AKW	APPROVED BY	
HOR. SCALE: 1:250		VERTICAL: 1:10		RELEASED FOR CONSTRUCTION:	
DATE		DATE		DATE	
17/04/18					

ENGINEER'S SEAL

CONSULTANT DRAWING NO. **C108**

THE CITY OF WINNIPEG
 PUBLIC WORKS DEPARTMENT
 ENGINEERING DIVISION

PROJECT TITLE
2017 INDUSTRIAL STREETS PACKAGE
BEGHIN AVENUE PLAN/PROFILE
 DE BAETS STREET TO STA 2+25

SHEET OF
08 OF **26**
 COMPUTER FILE NAME
ST BONIFACE_DESIGN.DWG
 CITY DRAWING NUMBER

P:\PROJECTS\2016\16-0107-003\DWG\MUN\CORDON_CALL.dwg
PLOT 1:1 (A-1)