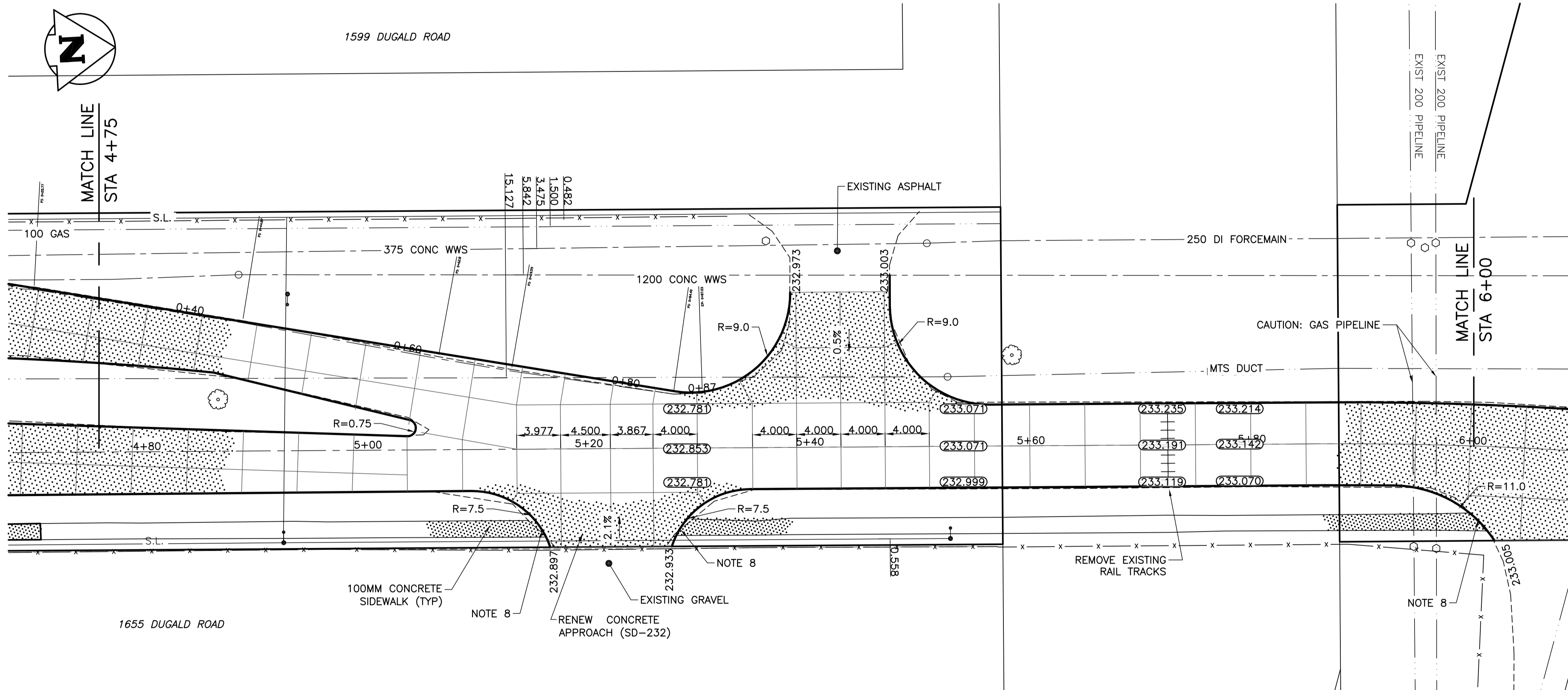


BOURNAIS DRIVE – PROFILE



BOURNAIS DRIVE – PLAN

- NOTES:**
1. ALL MEASUREMENTS TO BACK OF CURB.
 2. ALL EXISTING TREES TO BE PROTECTED AND MAINTAINED THROUGHOUT CONSTRUCTION.
 3. ALL BUS STOPS WITHIN LIMITS OF CONSTRUCTION TO BE TEMPORARILY RELOCATED BY OTHERS DURING WORKS.
 4. HAND OR SOFT DIG METHODS REQUIRED OVER ALL UTILITIES AT INTERVALS DETERMINED BY THE ENGINEER TO DETERMINE DEPTH OF COVER.
 5. NO WORKS, INCLUDING CONCRETE CUTTING OR BREAKING, TO BE UNDERTAKEN NEAR GAS LINES UNTIL DEPTH OF COVER IS DETERMINED AND A MB HYDRO SAFETY WATCH IS ON SITE.
 6. ANY GAS MAINS OR SERVICES EXPOSED IN THE EXCAVATION AREA TO BE ROCK WRAPPED IN ACCORDANCE WITH MB HYDRO STANDARDS PRIOR TO WORK PROCEEDING ON SITE.
 7. NO VIBRATORY COMPACTION PERMITTED WITHIN 1M OF GAS MAINS.
 8. CONSTRUCT NEW MONOLITHIC CURB RAMP (10mm HEIGHT INTEGRAL).
 9. REPLACE EXISTING SD-24 CATCHBASIN INSTALL BARRIER CURB AND GUTTER INLET FRAME (AP-008) AND INLET COVER (AP-008) AND REPLACE 250 LEAD @ 2% MINIMUM GRADE.
 10. TRANSVERSE JOINTS SPACED AT 5.0 INTERVALS UNLESS OTHERWISE NOTED.

PROPERTY LIMITS DELINEATION

DELINEATION OF PROPERTY LIMITS AS SHOWN ON THIS DWG DOES NOT REPRESENT A "LEGAL SURVEY". KGS GROUP MAKES NO REPRESENTATION OR WARRANTY AS TO THE ACCURACY OF PROPERTY LIMITS DELINEATED ON THIS DWG, NOR ON THE DIMENSIONAL ACCURACY OF DWG FEATURES RELATIVE TO THOSE PROPERTY LIMITS.

WARNING

NOTIFY THE GAS COMPANY OF THE PROPOSED LOCATION OF EXCAVATION.

TAKE PRECAUTION TO AVOID DAMAGE TO GAS COMPANY INSTALLATIONS.

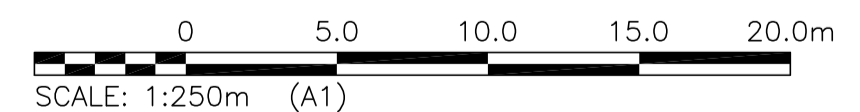
SEE PROVINCIAL REGULATION 210/72 FOR DETAILS.

METRIC

WHOLE NUMBERS INDICATE MILLIMETRES
DECIMALIZED NUMBERS INDICATE METRES

PRELIMINARY

NOT TO BE USED FOR CONSTRUCTION



300 LBS	LAND DRAINAGE SEWER	300 LBS							
250 WWS	WASTE WATER SEWER	250 WWS	+	TEST HOLE					
---	GAS	---	+	GUY WIRE					
---	HYDRO	---	+	LIGHT STANDARD					
---	M.T.S.	---	+	BACK OF CURB					
150 WM	WATERMAIN	150 WM	---	CONCRETE					
+	HYDRANT	+	---	ASPHALT					
+	VALVE	+	---	SIDEWALK					
+	MANHOLE	+	---	PROPERTY LINE					
+	CATCH BASIN	+	---	SURVEY BAR					
+	CURB INLET	+	---	GEODETIC BENCHMARK					
+	POLES	+	---	ELEVATION					
+	POLES	+	---						
EXISTING	LEGEND-PLAN	PROPOSED	EXISTING	LEGEND-PLAN	PROPOSED	EXISTING	LEGEND-PROFILE	PROPOSED	

LOCATION APPROVED UNDERGROUND STRUCTURES

B.M. KGS_BASE ELEV. 249.213

COORDINATE SYSTEM: CGV28

DESIGNED BY: AKW

CHECKED BY:

DRAWN BY: AKW

APPROVED BY:

HOR. SCALE: 1:250

VERTICAL: 1:10

RELEASED FOR CONSTRUCTION:

DATE: 17/04/18

DATE: 17/06/20

DATE: 17/06/12

NO. REVISIONS

DATE

BY

DATE

BY

DATE

BY

KGS GROUP CONSULTING ENGINEERS

ENGINEER'S SEAL

PROJECT TITLE: 2017 INDUSTRIAL STREETS PACKAGE

2017 INDUSTRIAL STREETS PACKAGE

BOURNAIS DRIVE PLAN/PROFILE

STA 4+75 TO STA 6+00

CONSULTANT DRAWING NO. C111

SHEET 11 OF 26

COMPUTER FILE NAME: ST BONIFACE_DESIGN.DWG

CITY DRAWING NUMBER

P:\PROJECTS\2016\16-0107-003\DWG\MUN\CORDON_CALL.dwg

PLOT 1:1 (A-1)