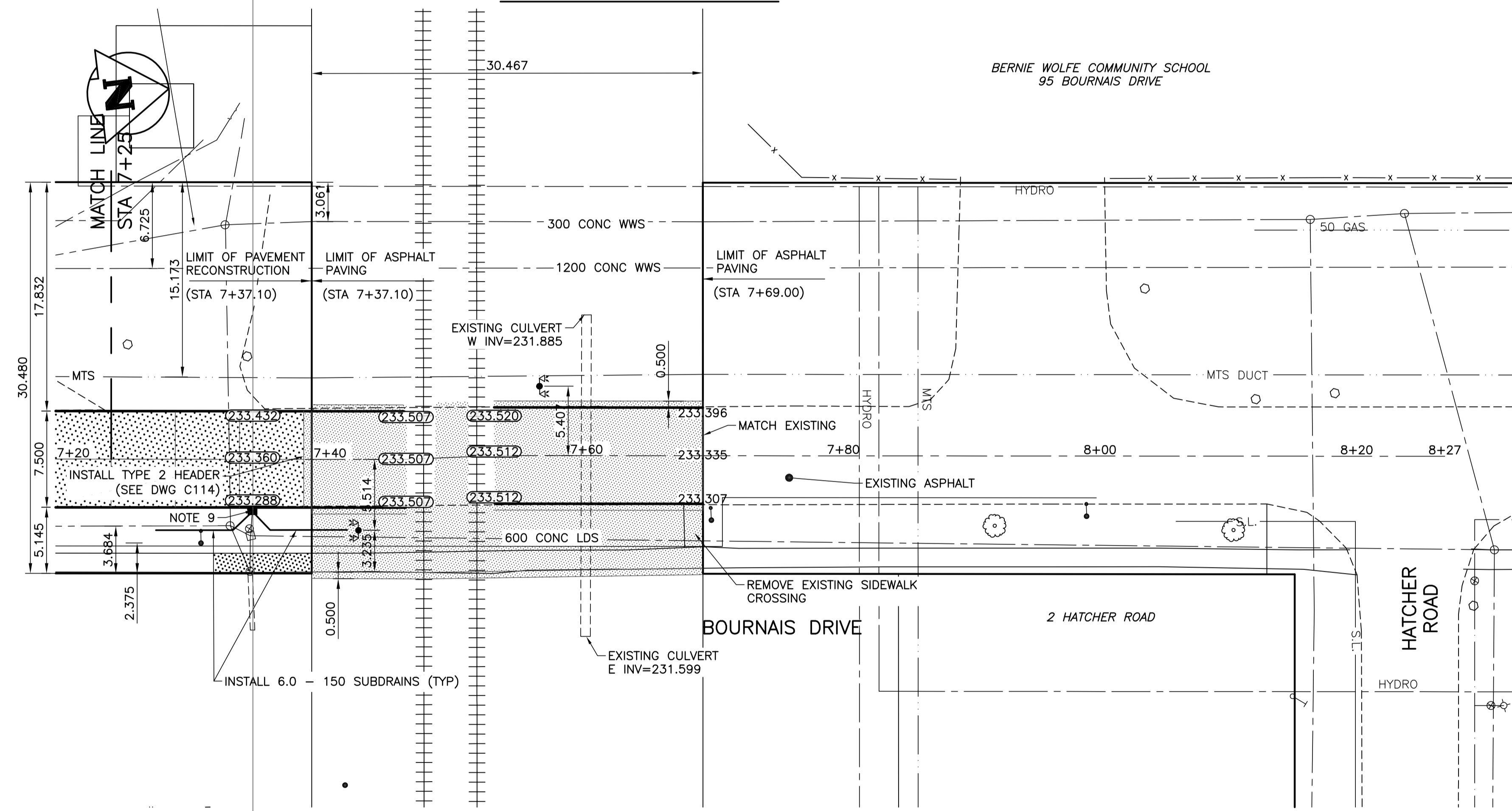


BOURNAIS DRIVE - PROFILE



BOURNAIS DRIVE - PLAN

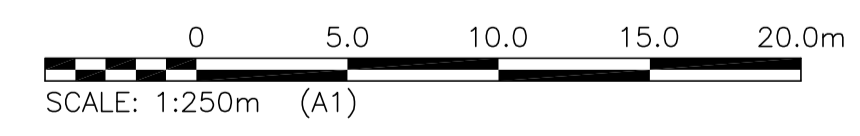
NOTES:

1. ALL MEASUREMENTS TO BACK OF CURB.
2. ALL EXISTING TREES TO BE PROTECTED AND MAINTAINED THROUGHOUT CONSTRUCTION.
3. ALL BUS STOPS WITHIN LIMITS OF CONSTRUCTION TO BE TEMPORARILY RELOCATED BY OTHERS DURING WORKS.
4. HAND OR SOFT DIG METHODS REQUIRED OVER ALL UTILITIES AT INTERVALS DETERMINED BY THE ENGINEER TO DETERMINE DEPTH OF COVER.
5. NO WORKS, INCLUDING CONCRETE CUTTING OR BREAKING, TO BE UNDERTAKEN NEAR GAS LINES UNTIL DEPTH OF COVER IS DETERMINED AND A MB HYDRO SAFETY WATCH IS ON SITE.
6. ANY GAS MAINS OR SERVICES EXPOSED IN THE EXCAVATION AREA TO BE ROCK WRAPPED IN ACCORDANCE WITH MB HYDRO STANDARDS PRIOR TO WORK PROCEEDING ON SITE.
7. NO VIBRATORY COMPACTION PERMITTED WITHIN 1M OF GAS MAINS.
8. CONSTRUCT NEW MONOLITHIC CURB RAMP (10mm HEIGHT INTEGRAL)
9. REPLACE EXISTING SD-24 CATCHBASIN INSTALL BARRIER CURB AND GUTTER INLET FRAME (AP-008) AND AND INLET COVER (AP-008) AND REPLACE 250 LEAD @ 2% MINIMUM GRADE.
10. TRANSVERSE JOINTS SPACED AT 5.0 INTERVALS UNLESS OTHERWISE NOTED.

PROPERTY LIMITS DELINEATION
 DELINEATION OF PROPERTY LIMITS AS SHOWN ON THIS DWG DOES NOT REPRESENT A "LEGAL SURVEY". KGS GROUP MAKES NO REPRESENTATION OR WARRANTY AS TO THE ACCURACY OF PROPERTY LIMITS DELINEATED ON THIS DWG, NOR ON THE DIMENSIONAL ACCURACY OF DWG FEATURES RELATIVE TO THOSE PROPERTY LIMITS.

WARNING
 NOTIFY THE GAS COMPANY OF THE PROPOSED LOCATION OF EXCAVATION.
 TAKE PRECAUTION TO AVOID DAMAGE TO GAS COMPANY INSTALLATIONS.
 SEE PROVINCIAL REGULATION 210/72 FOR DETAILS.

METRIC
 WHOLE NUMBERS INDICATE MILLIMETRES
 DECIMALIZED NUMBERS INDICATE METRES



PRELIMINARY
 NOT TO BE USED FOR CONSTRUCTION

P:\PROJECTS\2016\16-0107-003\DWG\MUN\CORRYDON_CALL.dwg
 PLOT 1:1 (A-1)

300 LDS	LAND DRAINAGE SEWER	300 LDS							
250 WWS	WASTE WATER SEWER	250 WWS	+	TEST HOLE					
	GAS		-	GUY WIRE					
	HYDRO		••	LIGHT STANDARD					
	M.T.S.			BACK OF CURB					
150 WM	WATERMAIN	150 WM	---	CONCRETE	XXXX	Q PROFILE	---		
	HYDRANT		+	ASPHALT	□	N/W LANE EDGE	---		
	VALVE		o	SIDEWALK	□	S/E LANE EDGE	---		
	MANHOLE		o	PROPERTY LINE	◇	N/W LANE P	---		
	CATCH BASIN		■	SURVEY BAR	+	S/E MEDIAN Q	---		
	CURB INLET		▽	GEODETIC BENCHMARK	⊕	PARKING/DRIVEWAY	---		
	POLES		•	ELEVATION	(32.231)	WINDOW/DOOR SILL	---		
EXISTING	LEGEND-PLAN	PROPOSED		EXISTING	LEGEND-PROFILE	PROPOSED			

LOCATION APPROVED UNDERGROUND STRUCTURES
 SUPV. U/G STRUCTURES COMMITTEE DATE
 NOTE:
 LOCATION OF UNDERGROUND STRUCTURES AS SHOWN ARE BASED ON THE BEST INFORMATION AVAILABLE BUT NO GUARANTEE IS GIVEN THAT ALL EXISTING UTILITIES ARE SHOWN OR THAT THE GIVEN LOCATIONS ARE EXACT. CONFIRMATION OF EXISTENCE AND EXACT LOCATION OF ALL SERVICES MUST BE OBTAINED FROM THE INDIVIDUAL UTILITIES BEFORE PROCEEDING WITH CONSTRUCTION.

B.M. KGS_BASE ELEV. 249.213	COORDINATE SYSTEM: CGVD28
B	ISSUED FOR TENDER 17/06/20
A	ISSUED FOR REVIEW 17/06/12
NO.	REVISIONS
	DATE
	BY

KGS GROUP CONSULTING ENGINEERS	
DESIGNED BY: AKW	CHECKED BY:
DRAWN BY: AKW	APPROVED BY:
HOR. SCALE: 1:250	RELEASED FOR CONSTRUCTION:
VERTICAL: 1:10	DATE:
DATE: 17/04/18	DATE:

ENGINEER'S SEAL
 CONSULTANT DRAWING NO. **C113**

THE CITY OF WINNIPEG PUBLIC WORKS DEPARTMENT ENGINEERING DIVISION

PROJECT TITLE: **2017 INDUSTRIAL STREETS PACKAGE**
BOURNAIS DRIVE PLAN/PROFILE
STA 7+25 TO CN REDDITT LINE

SHEET **13** OF **26**
 COMPUTER FILE NAME: **ST BONIFACE_DESIGN.DWG**
 CITY DRAWING NUMBER: **---**