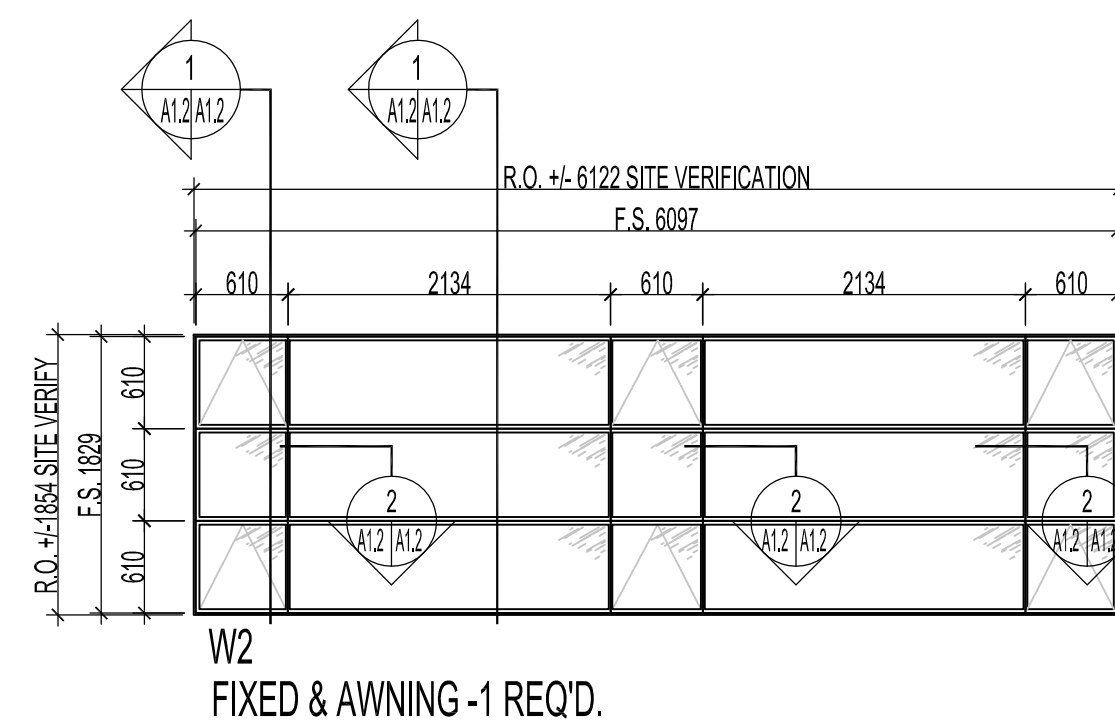
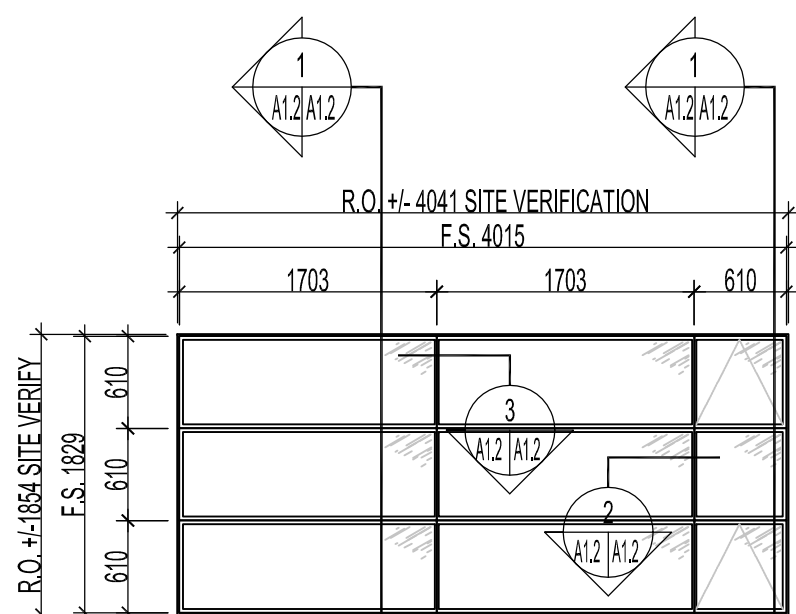


W1
FIXED & AWNING -1 REQ'D.

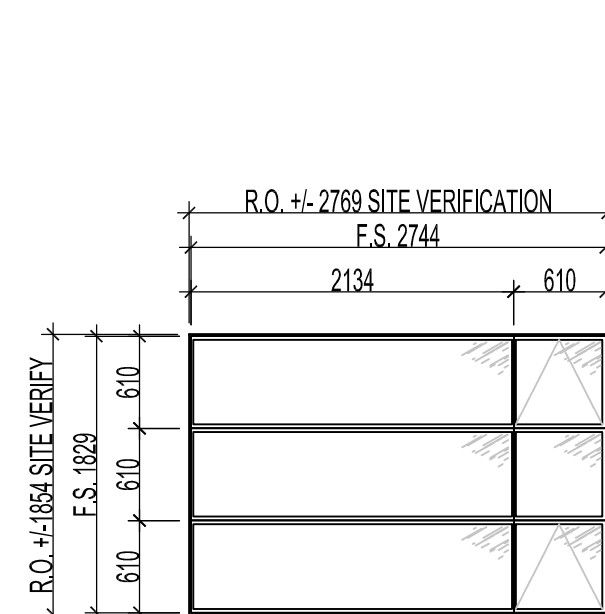


W2
FIXED & AWNING -1 REQ'D.

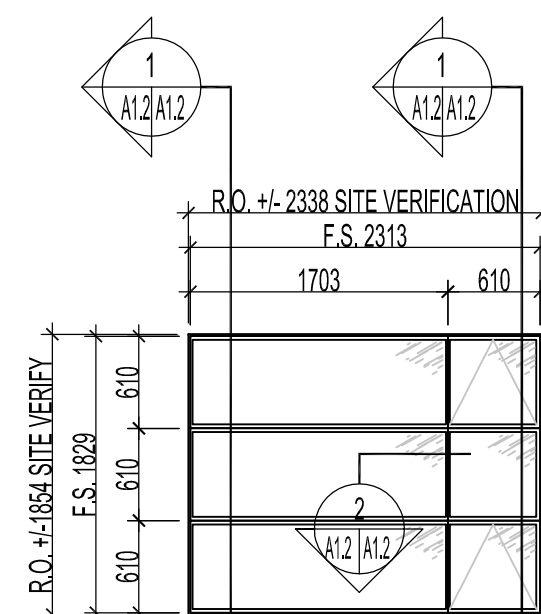
WINDOW TYPES -ALL WINDOWS TO BE TRI-PANE, FIBERGLAS FROM SILEX FIBERGLAS WINDOWS OF WINNIPEG



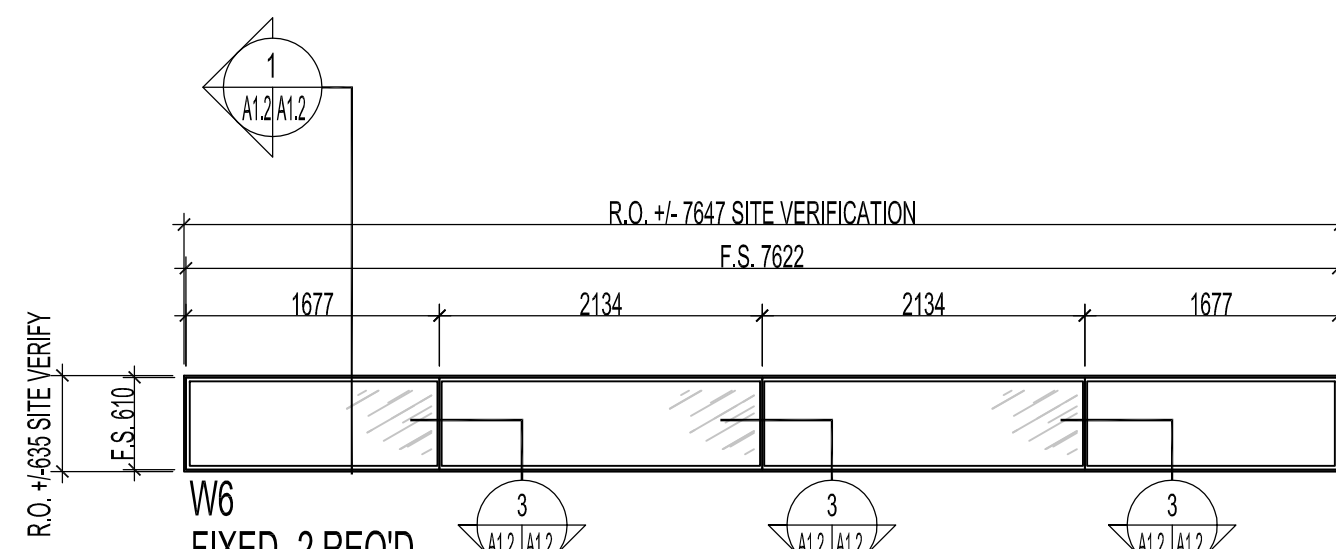
W3
FIXED & AWNING -1 REQ'D.



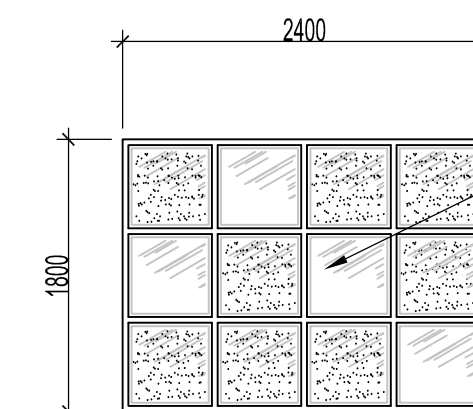
W4
FIXED & AWNING -1 REQ'D.



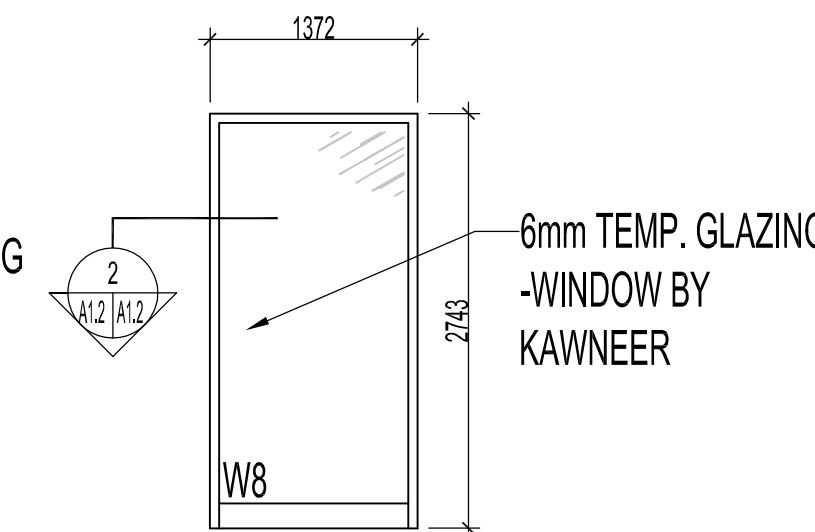
W5
FIXED & AWNING -1 REQ'D.



W6
FIXED -2 REQ'D.



W7
FIXED -3 REQ'D.



W8
FIXED -1 REQ'D. VEST. 115

6mm TEMP. GLAZING
PANELS B/S-SEE
WIND WALL DWGS
FOR DETAILS

6mm TEMP. GLAZING
-WINDOW BY
KAWNEER

NOTES:

NOTES:

ALL GIRTS, COLUMNS, CROSS BRACING & FLOOR ANGLES TO BE SPRAY PAINTED WHITE TO MATCH INTERIOR INSULATED METAL PANELS.

ROOM FINISH SCHEDULE										
ROOM NO.	ROOM NAME	FLOOR	BASEBOARD	NORTH WALL	SOUTH WALL	EAST WALL	WEST WALL	CEILING	CEILING HEIGHT	NOTES
801	STAIRS	TYPE 4, 5, & 6	---	A.S.	A.S.	A.S.	A.S.	---	2718	A.S. ON US OF CONCRETE LANDING PAINT CEILING & STAIR COMPONENTS AS PER STAIR DETAILS
802	MECHANICAL ROOM #1	---	R.B.B.1	A.S.	---	---	PT. A.S.	---	2718	R.B.B.1 ON GYPSUM BOARD WALLS ONLY
803	MALE MUD CHANGING ROOM	---	R.B.B.1	O.B. PT.	O.B. PT.	O.B. PT.	O.B. PT.	---	2718	
804	LAUNDRY	---	R.B.B.1	O.B. PT.	O.B. PT.	O.B. PT.	O.B. PT.	---	2718	
805	FEMALE MUD CHANGING ROOM	---	R.B.B.1	O.B. PT.	O.B. PT.	O.B. PT.	O.B. PT.	---	2718	
806	NETWORK ROOM	---	R.B.B.1	PT.	PT.	PT.	PT.	---	2718	
807	ELECTRICAL ROOM	---	R.B.B.1	PT.	---	PT.	PT., A.S.	---	2718	R.B.B.1 ON GYPSUM BOARD WALLS ONLY
808	STAIRS	TYPE 4, 5, & 6	---	A.S.	A.S.	A.S.	A.S.	---	---	A.S. ON US OF CONCRETE LANDING PAINT CEILING & STAIR COMPONENTS AS PER STAIR DETAILS
809	VACANT FUTURE STORAGE	---	R.B.B.1	PT. A.S.	---	PT.	---	---	2718	R.B.B.1 ON GYPSUM BOARD WALLS ONLY
810	MECHANICAL ROOM #2 LIAISON	---	R.B.B.1	---	O.B. PT.	A.S.	O.B. PT.	---	2718	R.B.B.1 ON GYPSUM BOARD WALLS ONLY
101	FEMALE LOCKERS	TYPE 1	R.B.B.1	---	A.S.	A.S.	A.S.	AC. T.	3000	
102	FEMALE SHOWERS	TYPE 1	R.B.B.1	A.S.	A.S.	A.S.	A.S.	AC. T.	3000	
103	FEMALE WASHROOM	TYPE 1	R.B.B.1	A.S.	A.S.	---	A.S.	AC. T.	3000	
104	VESTIBULE	TYPE 1	R.B.B.1	A.S.	A.S.	---	A.S.	AC. T.	3000	
105	MALE WASHROOM	TYPE 1	R.B.B.1	A.S.	A.S.	---	A.S.	AC. T.	3000	
106	MALE SHOWERS	TYPE 1	R.B.B.1	A.S.	A.S.	A.S.	A.S.	AC. T.	3000	
107	MALE LOCKERS	TYPE 1	R.B.B.1	A.S.	A.S.	---	PT., A.S.	AC. T.	3000	
108	LUNCH ROOM	TYPE 2	R.B.B.1	PT.	A.S.	A.S.	PT.	AC. T.	3000	
109	CORRIDOR	TYPE 1 & 2	R.B.B.1	---	PT. & B.B.	A.S.	---	AC. T.	3000	
110	STAIRS	TYPE 2, 4, & 6	R.B.B.1	A.S.	A.S.	A.S.	A.S.	PT.	6891	A.S. ON US OF CONCRETE LANDING PAINT CEILING & STAIR COMPONENTS AS PER STAIR DETAILS
111	COPY / SUPPLIES	TYPE 2	R.B.B.1	---	A.S.	PT.	---	AC. T.	3000	
112	GENERAL OFFICE AREA 1	TYPE 2	R.B.B.1	---	---	A.S.	---	AC. T. & PT.	3000	
113	GENERAL OFFICE AREA 2	TYPE 2	R.B.B.1	---	---	---	---	AC. T. & PT.	3000	
114	CORRIDOR	TYPE 2	R.B.B.1	PT. BULKHEAD	---	---	---	AC. T. & PT.	3000	
115	VESTIBULE	TYPE 3	R.B.B.1	---	---	PT.	---	FF. M. S.	2820	
116	WAITING AREA	TYPE 1 & 2	R.B.B.1	PT. BULKHEAD	---	---	PT.	PT.	5600	
117	MULTI-PURPOSE ROOM	TYPE 1	R.B.B.1	PT. & W.T.	PT. BULKHEAD	A.S.	PT. & B.B.	AC. T.	3000	
118	UNIVERSAL TOILET ROOM	TYPE 1	R.B.B.1	---	A.S.	A.S.	A.S.	AC. T.	3000	
119	STAIRS	TYPE 2, 4, & 6	R.B.B.1	---	A.S.	A.S.	A.S.	PT.	6891	A.S. ON US OF CONCRETE LANDING PAINT CEILING & STAIR COMPONENTS AS PER STAIR DETAILS
120	JANITOR	TYPE 1	R.B.B.1	A.S.	A.S.	A.S.	A.S.	AC. T.	3000	
121	CORRIDOR	TYPE 1 & 2	R.B.B.1	PT. BULKHEAD	A.S.	---	---	AC. T.	3000	
122	CORRIDOR	TYPE 1 & 2	R.B.B.1	A.S.	---	A.S.	---	AC. T.	3000	
123	GENERAL OFFICE AREA 3	TYPE 2	TEKONION ALTOS	---	---	---	---	AC. T.	3000	
124	ENVIRONMENTAL SUPERVISOR	TYPE 2	TEKONION ALTOS	---	---	---	---	AC. T.	3000	
125	OPERATIONS FOREMAN	TYPE 2	TEKONION ALTOS	---	---	---	---	AC. T.	3000	
126	OPERATIONS SUPERVISOR	TYPE 2	TEKONION ALTOS	---	---	---	---	AC. T.	3000	
127	FINANCE CLERK C	TYPE 2	TEKONION ALTOS	---	---	---	---	AC. T.	3000	
128	FINANCE SUPERVISOR	TYPE 2	TEKONION ALTOS	---	---	---	---	AC. T.	3000	

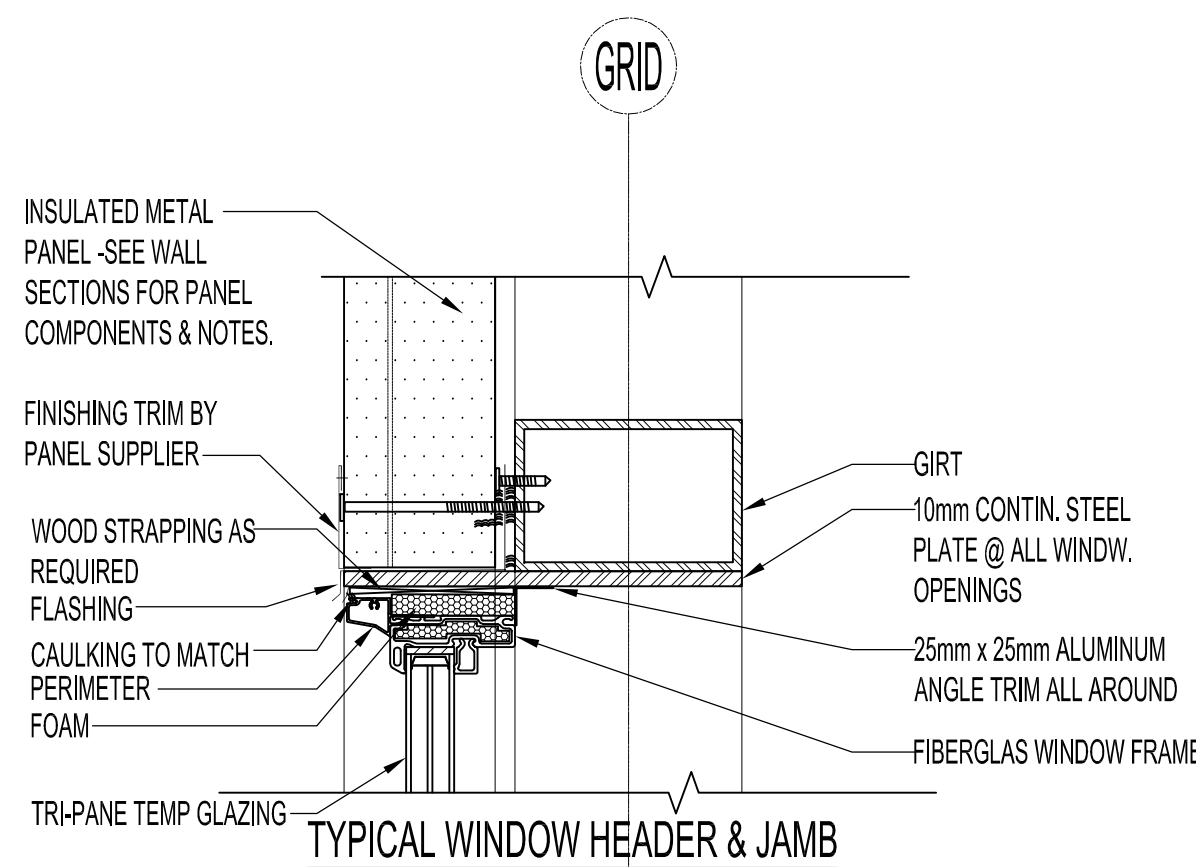
ABBREVIATIONS

TYPE 1 & 2 - VINYL SHEET FLOORING W/ 150 COVE BASE
TYPE 3 - ALUMINUM FLOOR MAT
TYPE 4, 5, & 6 - RUBBER TACTILE WARNING, NOSINGS & TRIMS

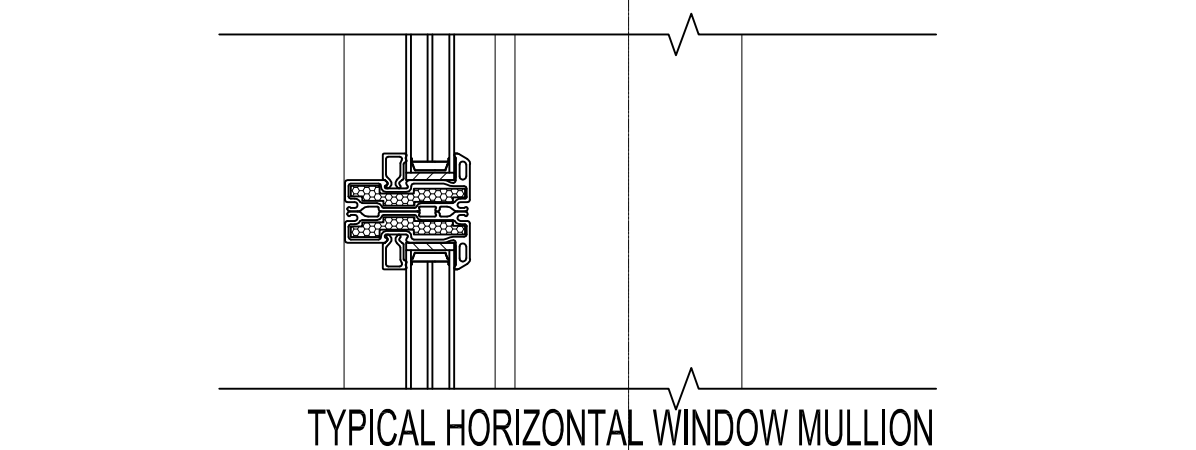
R.B.B. - 4" RUBBER BASEBOARD
TEKONION ALTOS - BASES ARE PRE-FINISHED & INCLUDED W/ WALL SYSTEM
A.S. - JOIST SEAL FINISH ON ALL INTERIOR CONCRETE BLOCK (CONCRETE WALL & US OF LANDING IN STAIRS) - SEE WALL TYPE NOTES FOR FINISH

PT. - PAINT
O.B. PT. - OIL BASED PAINT
B.B. - BULLETIN BOARD - SEE INTER. FIN. DWGS
W.T. - WALL TALKERS FINISH - SEE INTER. FIN. DWGS

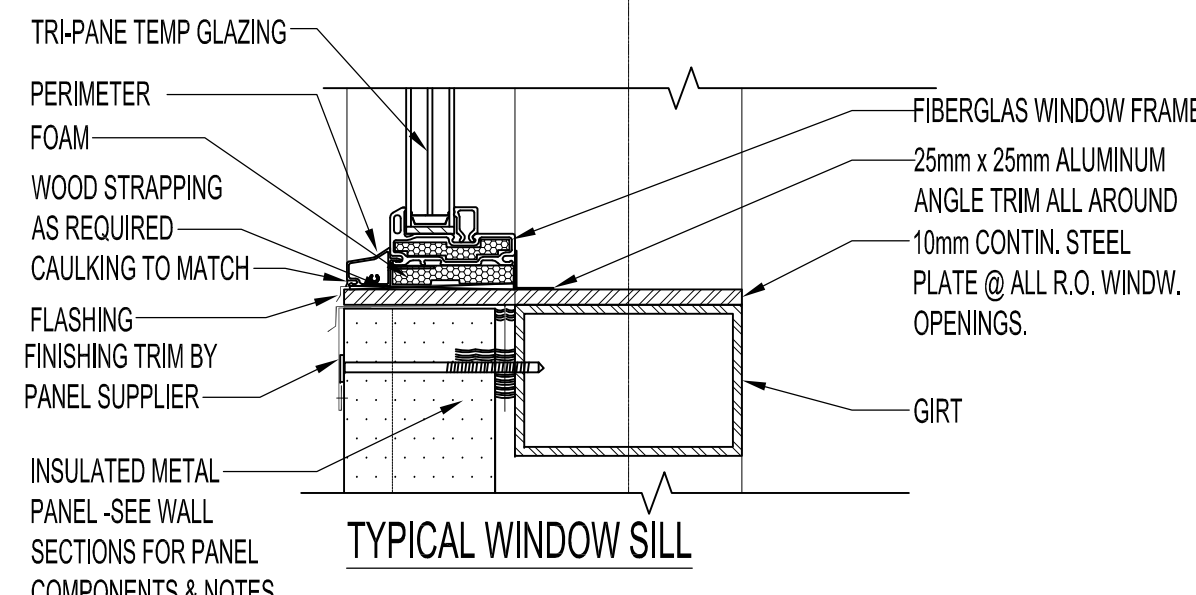
FF. M. S. - PRE-FINISHED METAL SOFFITS
AC. T. - ACOUSTIC TILE



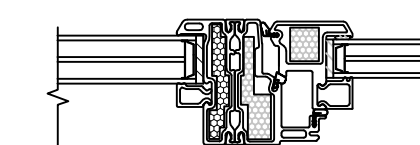
TYPICAL WINDOW HEADER & JAMB



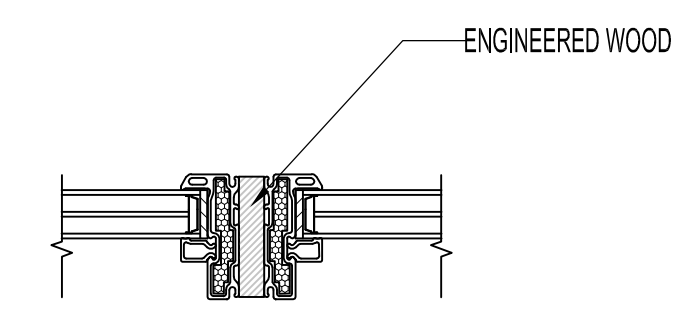
TYPICAL HORIZONTAL WINDOW MULLION



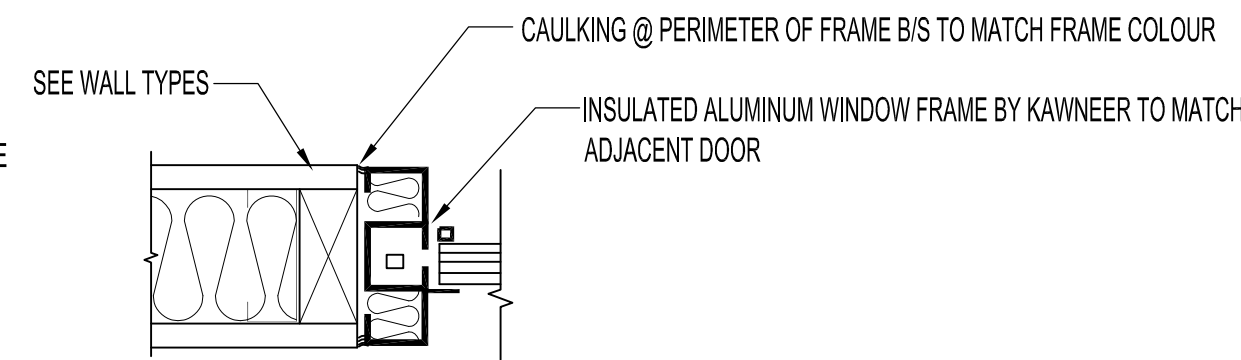
TYPICAL WINDOW SILL



SECTION - TYPICAL VERTICAL MULLION
SCALE: 1:5



SECTION - TYPICAL VERTICAL MULLION
SCALE: 1:5



DOOR / WINDOW JAMB DETAIL - INTERIOR - GYP. BD WALL
SCALE: 1:5

SECTION - TYPICAL WINDOW
SCALE: 1:5

0	ISSUED FOR CONSTRUCTION	MMK	MAR 17, 2017
No.	REVISION/DESCRIPTION	BY	DATE



DRAWN	MMK	CHECKED	DESIGNED	APPROVED
DATE	2016.08.30	USER	APPROVAL	

THE CITY OF WINNIPEG
PLANNING, PROPERTY AND
DEVELOPMENT DEPARTMENT
MUNICIPAL ACCOMMODATIONS DIVISION
3-65 GARRY STREET, R3C 4K4

PROJECT
BRADY ROAD LANDFILL
ADMINISTRATION BUILDING
DEVELOPMENT FOR BRADY LANDFILL
1777 BRADY ROAD

SHEET TITLE
WINDOW TYPES & DETAILS
ROOM FINISH SCHEDULES

SCALE	PROJECT No:	SHEET No:
AS SHOWN	2015-037	A1.2