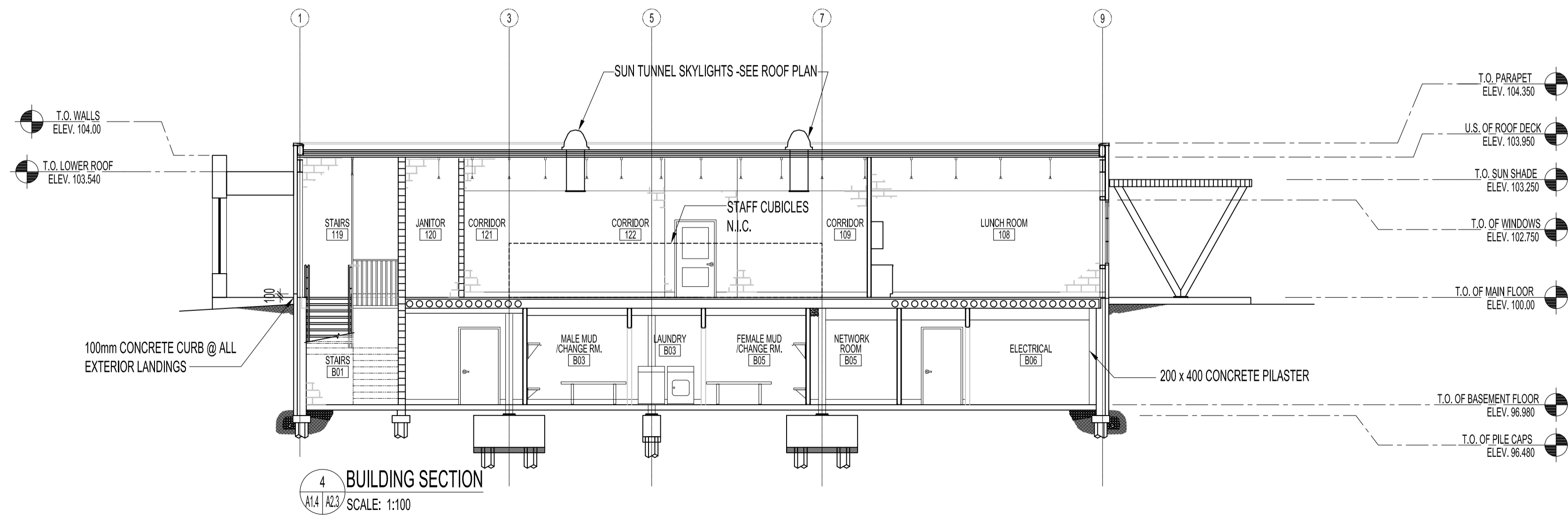
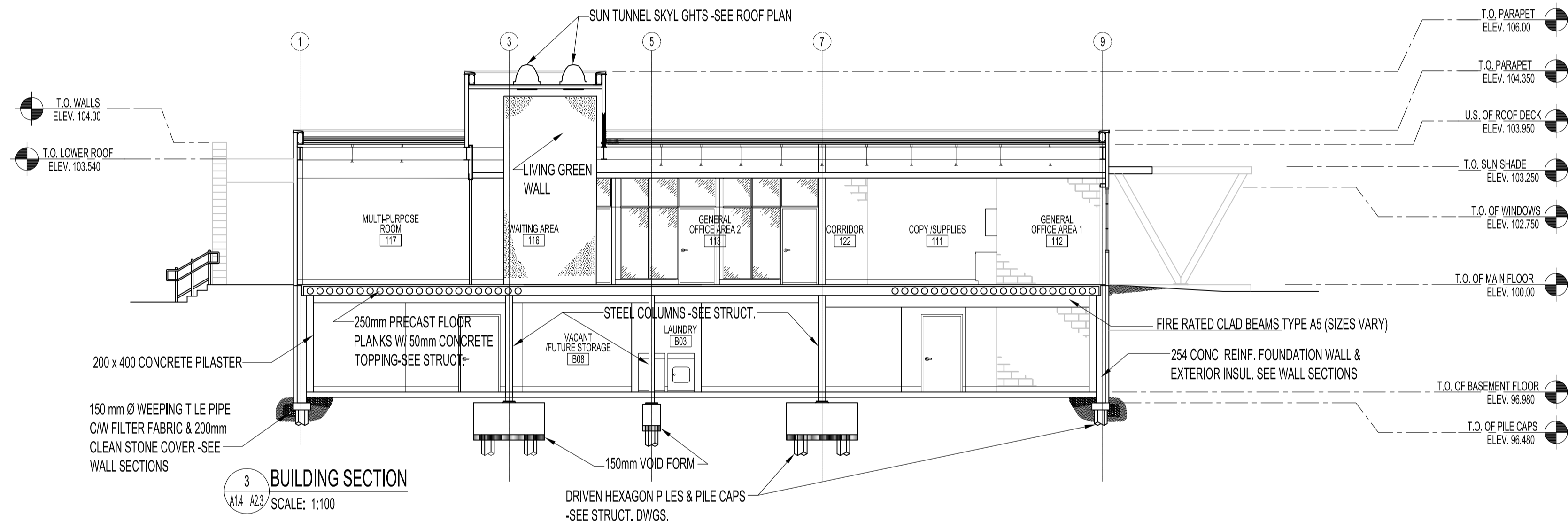
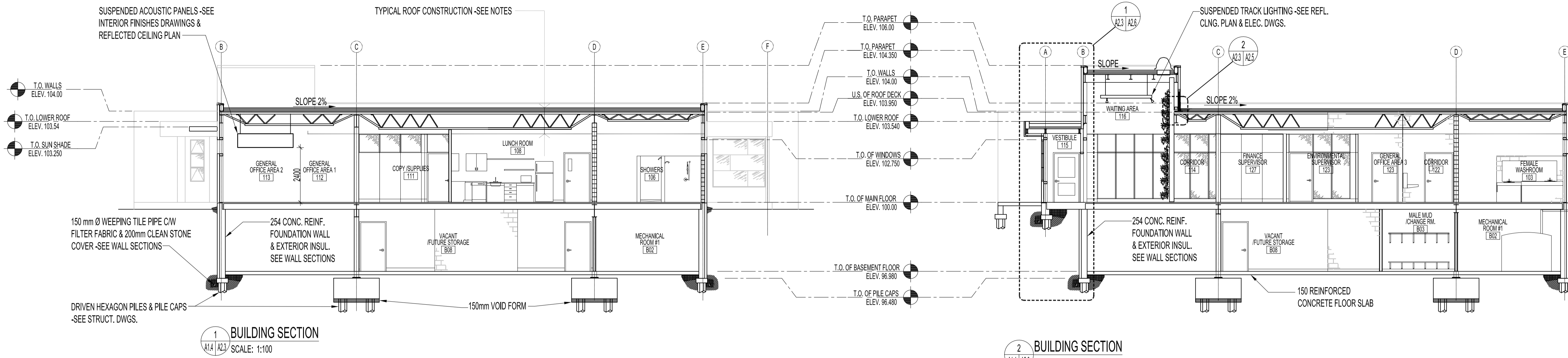


NOTES:

TYPICAL ROOF CONSTRUCTION

- 2 PLY MODIFIED BITUMEN ROOF MEMBRANE SYSTEM -TORCH ON
- 1 LAYER 6mm OVERLAY BOARD ADHERED.
- 100mm POLY ISOCYANURATE INSULATION R24 ADHERED.
- TAPERED EPS INSULATION MG. R26 ADHERED.
- SBS AIR /VAPOUR RETARD -TORCH ON.
- 16mm TYPE 'X' GYPSUM BOARD FASTENED
- STEEL DECKING
- AREAS OF OPEN WEB STEEL JOISTS IN VARIOUS SIZES AND BEAMS IN VARIOUS SIZES. UPPER ROOF AREA HAS NO STEEL WEB JOISTS. SEE STRUCT.
- SUSPENDED ACOUSTIC CEILING TILE SYSTEM OR AREAS WITH OPEN CONCEPT. SEE REFLECTED CEILING PLAN.



0	ISSUED FOR CONSTRUCTION	MMK	MAR 17, 2017
No.	REVISION/DESCRIPTION	BY	DATE



DRAWN	MMK	CHECKED	DESIGNED	APPROVED
DATE	2016.08.30	USER	APPROVAL	

THE CITY OF WINNIPEG  
PLANNING, PROPERTY AND  
DEVELOPMENT DEPARTMENT  
MUNICIPAL ACCOMMODATIONS DIVISION  
3-65 GARRY STREET, R3C 4K4

PROJECT  
BRADY ROAD LANDFILL  
ADMINISTRATION BUILDING  
DEVELOPMENT FOR BRADY LANDFILL  
1901 BRADY ROAD

SHEET TITLE  
BUILDING SECTIONS

SCALE	PROJECT No:	SHEET No:
AS SHOWN	2015-037	A2.3