

PERIMETER HIGHWAY

BRADY ROAD

BRADY ROAD

PROPOSED BUILDING LOCATION.
SEE LARGE PLAN

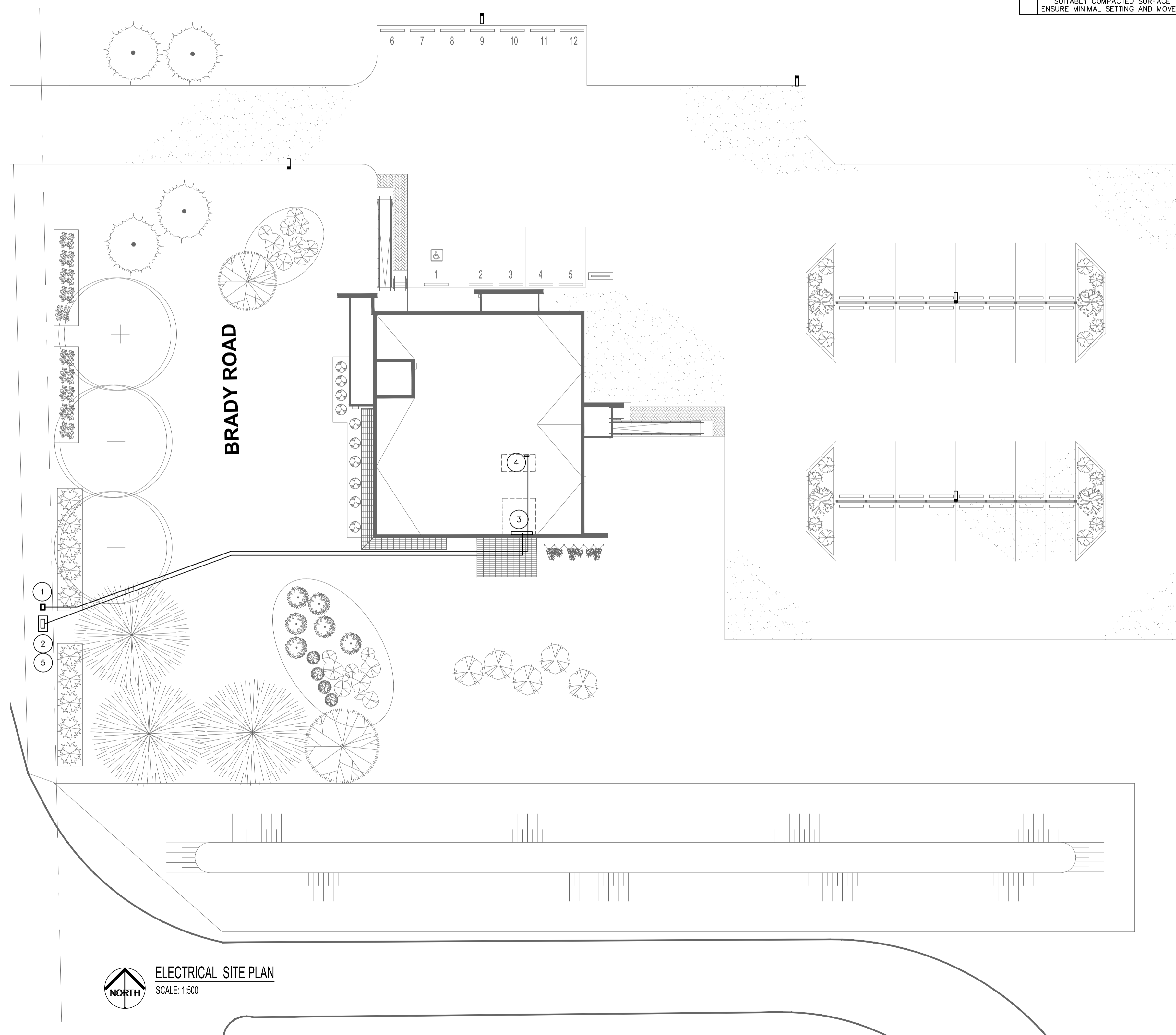


PARTIAL SITE PLAN - KEY PLAN
SCALE: N.T.S.

- DRAWING NOTES:**
- CONTRACTOR TO COORDINATE WITH ALL UTILITIES PRIOR TO INSTALLATION. ENSURE TO LOCATE ALL EXISTING SERVICES AND INSTALL ACCORDINGLY.
 - CONTRACTOR TO PROVIDE ALL TRENCHING, WARNING TAPE, PROTECTIVE COVERINGS, COMPATIBLE BACKFILL, AND ALL OTHER NECESSARY MATERIALS FOR ENTIRE RUN OF TRENCHING. COMPACT BACKFILL IN SMALL LIFTS TO THE PROPER DENSITY AS REQUIRED BY CONTRACT ADMINISTRATOR.
 - COORDINATE WITH POWER AND COMMUNICATION UTILITIES TO ENSURE FINAL LOCATIONS OF ALL SERVICES AS REQUIRED.
 - UTILIZE RIGID PVC CONDUIT C/W EXPANSION FITTINGS OR TECK CABLE FOR UNDERGROUND WIRING METHOD. WIRING ABOVE GROUND EXPOSED TO WEATHER TO BE WATERPROOF C/W SEALING RINGS, WEATHERHEADS, ETC.

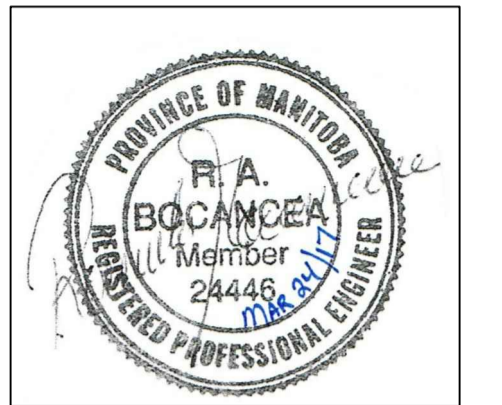


ELECTRICAL SITE PLAN
SCALE: 1:500



- KEY NOTES:**
- PROPOSED LOCATION OF MTS PEDESTAL. RUN 2-100MM RIGID PVC FROM THE PEDESTAL TO A STUB UP LOCATION AT THE COMMUNICATION BACKBOARD. PROVIDE 1/4" PULL ROPE IN EACH CONDUIT. ALSO COORDINATE THE PROVISION OF A 50 PAIR INCOMING COMMUNICATION CABLE FROM THE PEDESTAL TO THE BUILDING DEMARCATION LOCATION. ARRANGE WITH UTILITY AND CONTRACT ADMINISTRATOR.
 - PROPOSED LOCATION OF INCOMING POWER SERVICE AND METERED CSTE. COORDINATE WITH MB HYDRO.
 - MAIN ELECTRICAL DISTRIBUTION PANEL IN BASEMENT.
 - INCOMING COMMUNICATION BACKBOARD IN COMM ROOM IN BASEMENT. PROVIDE A RECEPTACLE ON A DEDICATED CIRCUIT, #6 Cg GROUND CABLE AND OTHER REQUIREMENTS TO SUIT THE INCOMING UTILITY.
 - PROVIDE CSTE C/W FIBERGLASS MOUNTING PAD. ENSURE PAD IS PLACED ON SUITABLY COMPACTED SURFACE TO ENSURE MINIMAL SETTING AND MOVEMENT.

NOTES:



| No. | REVISION/DESCRIPTION | BY | DATE |
|-----|---------------------------------|----|------------|
| 1 | ISSUED FOR CONSTRUCTION | KO | 2017 03.24 |
| 0 | ISSUED FOR UTILITY COORDINATION | KO | 2017 02.28 |

| DRAWN | CHECKED | RB | DESIGNED | KO | APPROVED |
|-------|---------|----|----------|----|----------|
| | | | | | |

DATE: 2017.02.23
 USER APPROVAL
 THE CITY OF WINNIPEG
 PLANNING, PROPERTY AND
 DEVELOPMENT DEPARTMENT
 MUNICIPAL ACCOMMODATIONS DIVISION
 3-65 GARRY STREET, R3C 4K4

PROJECT
 BRADY ROAD LANDFILL
 ADMINISTRATION BUILDING
 DEVELOPMENT FOR BRADY LANDFILL
 1777 BRADY ROAD

SHEET TITLE
 ELECTRICAL SITE PLAN

| SCALE | PROJECT No: | SHEET No: |
|----------|-------------|-----------|
| AS SHOWN | 2015-037 | ES1 |