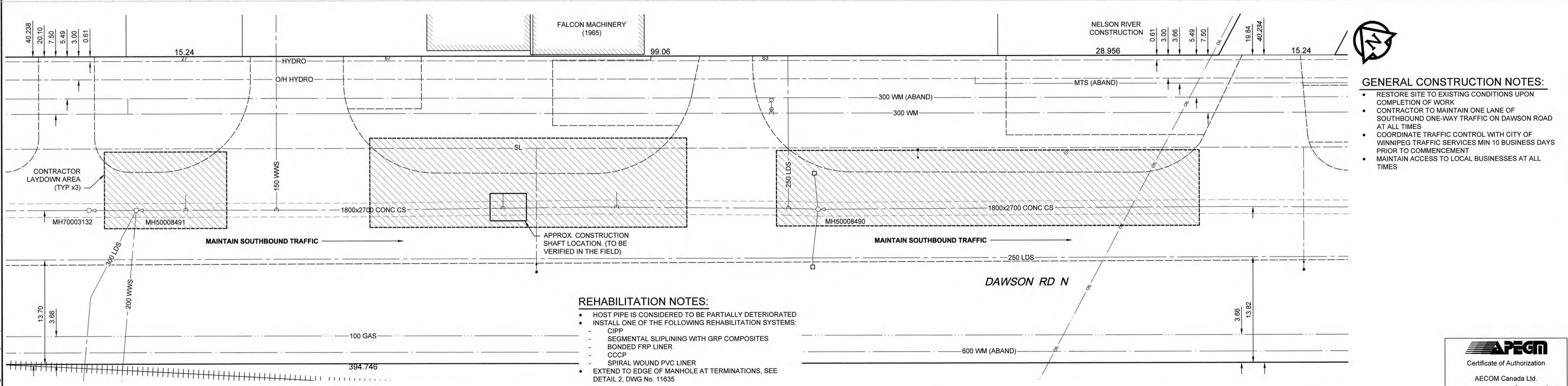
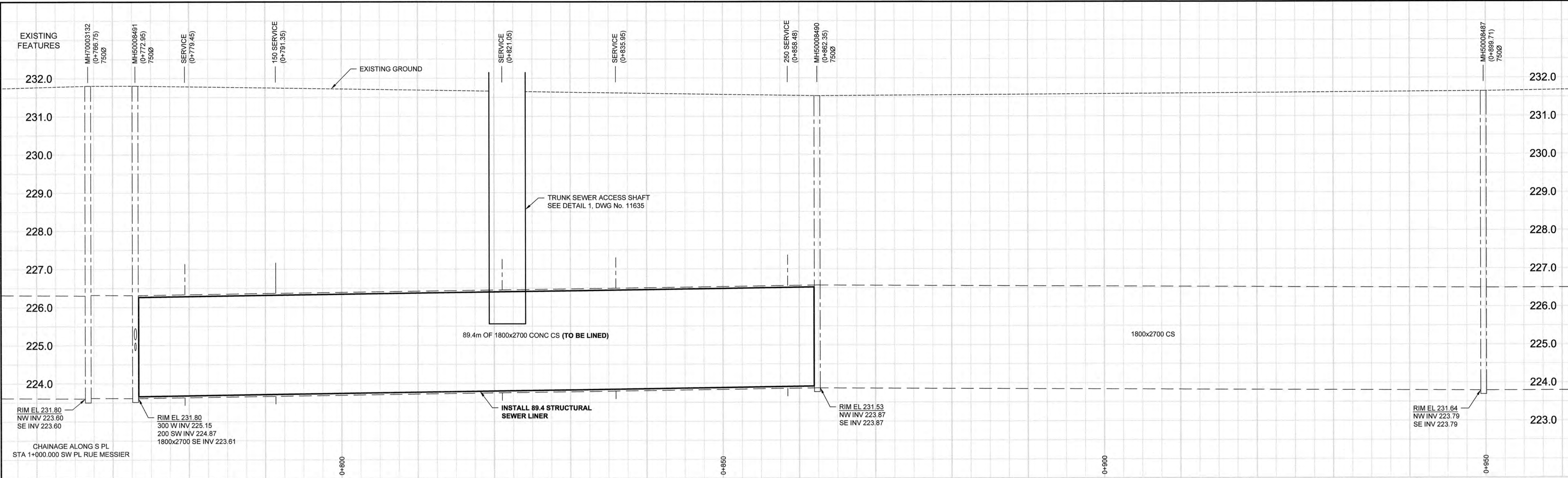


D SIZE 22" x 34" (559mm x 864mm)

PLOT: 8/1/2017 1:35:25 PM

AECOM FILE NAME: 60528374-SHT-00-0000-C-1002.dwg Saved By: cooperk



REHABILITATION NOTES:

- HOST PIPE IS CONSIDERED TO BE PARTIALLY DETERIORATED
- INSTALL ONE OF THE FOLLOWING REHABILITATION SYSTEMS:
 - CIPP
 - SEGMENTAL SLIPLINING WITH GRP COMPOSITES
 - BONDED FRP LINER
 - CCCP
 - SPIRAL WOUND PVC LINER
- EXTEND TO EDGE OF MANHOLE AT TERMINATIONS, SEE DETAIL 2, DWG No. 11635



GENERAL CONSTRUCTION NOTES:

- RESTORE SITE TO EXISTING CONDITIONS UPON COMPLETION OF WORK
- CONTRACTOR TO MAINTAIN ONE LANE OF SOUTHBOUND ONE-WAY TRAFFIC ON DAWSON ROAD AT ALL TIMES
- COORDINATE TRAFFIC CONTROL WITH CITY OF WINNIPEG TRAFFIC SERVICES MIN 10 BUSINESS DAYS PRIOR TO COMMENCEMENT
- MAINTAIN ACCESS TO LOCAL BUSINESSES AT ALL TIMES

EXISTING	LEGEND - PLAN	NEW	EXISTING	LEGEND - PLAN	NEW	EXISTING	LEGEND - PROFILE	NEW
	WATERMAIN			WATERMAIN			WATERMAIN	
	LAND DRAINAGE SEWER			LAND DRAINAGE SEWER			LAND DRAINAGE SEWER	
	WASTE WATER SEWER			WASTE WATER SEWER			WASTE WATER SEWER	
	MANHOLE			MANHOLE			MANHOLE	
	CATCH BASIN			CATCH BASIN			CATCH BASIN	
	CURB INLET			CURB INLET			CURB INLET	
	CULVERT			CULVERT			CULVERT	
	PIPE ABANDONMENTS			PIPE ABANDONMENTS			PIPE ABANDONMENTS	
	SURVEY BAR			SURVEY BAR			SURVEY BAR	
	CURB STOP			CURB STOP			CURB STOP	
	HYDRANT			HYDRANT			HYDRANT	
	VALVE			VALVE			VALVE	
	COUPLING			COUPLING			COUPLING	
	ANODE			ANODE			ANODE	
	HYDRO			HYDRO			HYDRO	
	MTS			MTS			MTS	
	GAS			GAS			GAS	
	TESTHOLE			TESTHOLE			TESTHOLE	
	LAMP STANDARD			LAMP STANDARD			LAMP STANDARD	
	TREE			TREE			TREE	

LOCATION APPROVED
UNDERGROUND STRUCTURES

SUPR. U/G STRUCTURES DATE COMMITTEE

NOTE:
LOCATION OF UNDERGROUND STRUCTURES AS SHOWN ARE BASED ON THE BEST INFORMATION AVAILABLE. BUT NO GUARANTEE IS GIVEN THAT ALL EXISTING UTILITIES ARE SHOWN OR THAT THE GIVEN LOCATIONS ARE EXACT. CONFIRMATION OF EXISTENCE AND EXACT LOCATION OF ALL SERVICES MUST BE OBTAINED FROM THE INDIVIDUAL UTILITIES BEFORE PROCEEDING WITH CONSTRUCTION.

NO.	REVISIONS	DATE	BY
0	ISSUED FOR CONSTRUCTION	17/08/02	KLC

AECOM

DESIGNED BY: ADB
DRAWN BY: KLC
HOR. SCALE: 1:250
VERT. SCALE: 1:50

CHECKED BY: [Signature]
APPROVED BY: [Signature]
RELEASED FOR CONSTRUCTION: [Signature]
DATE: 07/02/17

PROFESSIONAL'S SEAL

A.D. BRAUN
Member
24453
REGISTERED PROFESSIONAL ENGINEER

CONSULTANT DRAWING NO. 60528374-SHT-00-0000-C-1002

THE CITY OF WINNIPEG
WATER AND WASTE DEPARTMENT

2017 TRENCHLESS REHABILITATION OF NON-CIRCULAR COMBINED SEWERS
CONTRACT 1
DAWSON ROAD N
PLAN / PROFILE

SHEET 3 OF 4
CITY DRAWING NUMBER
11634
REV 0

BID OPPORTUNITY NO. 558-2017