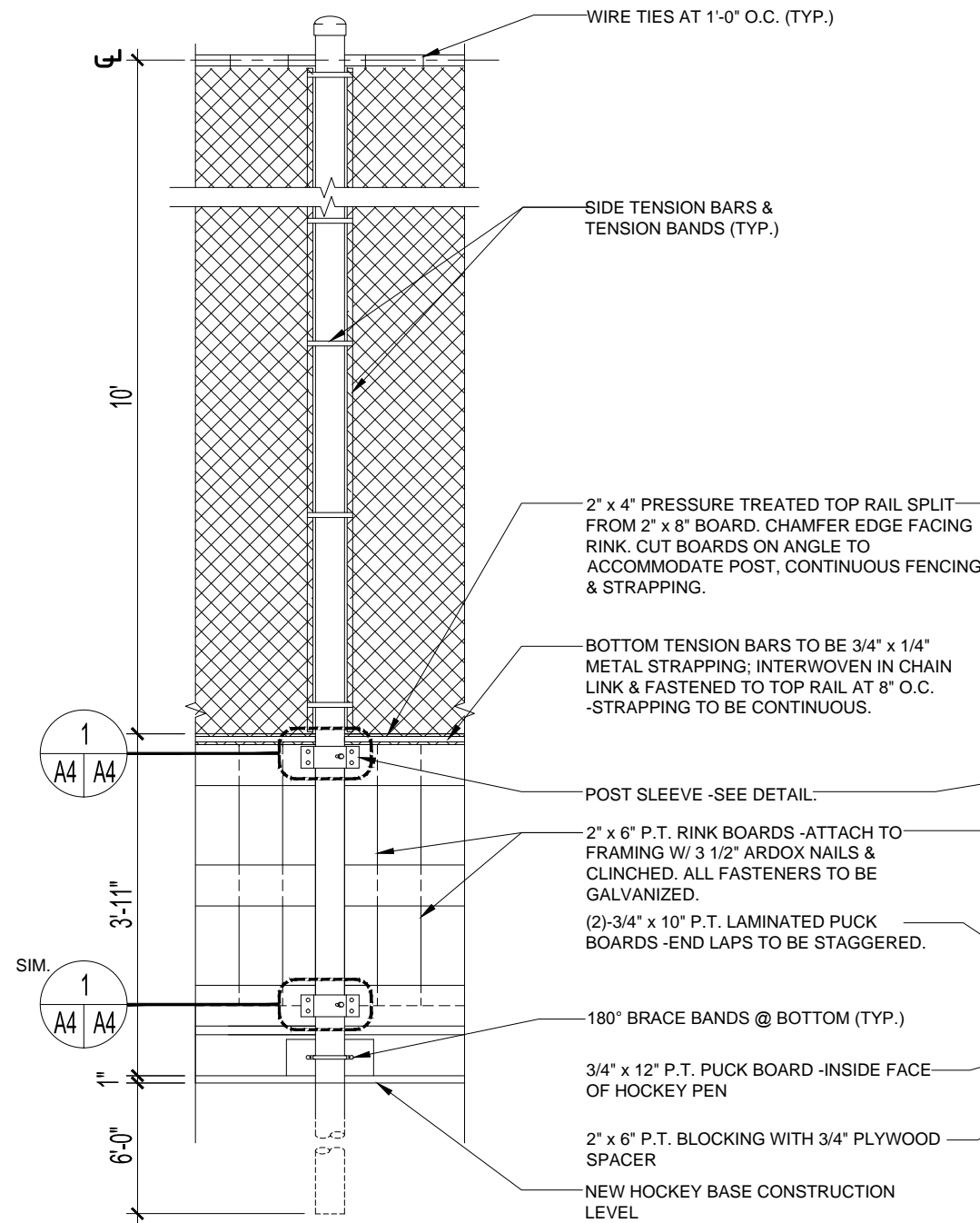
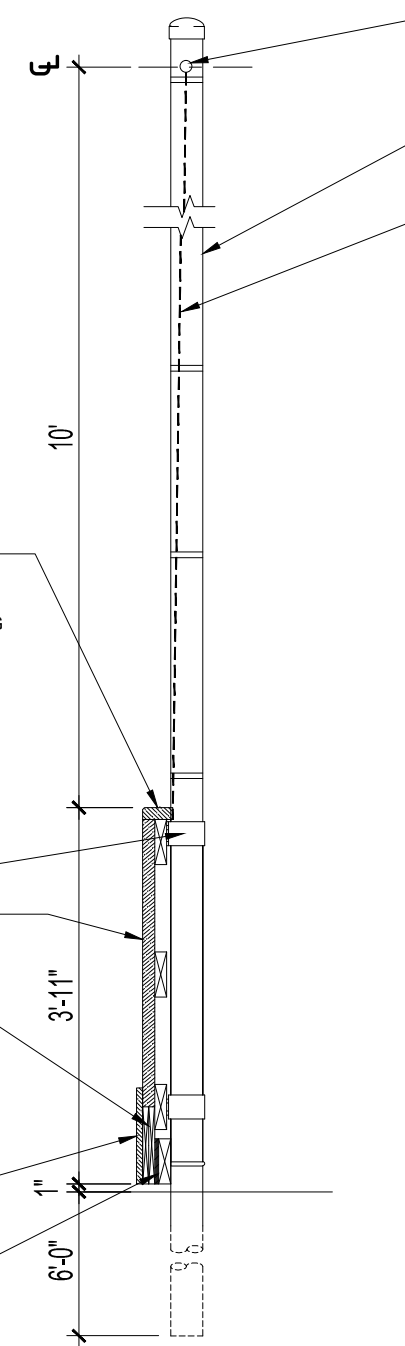


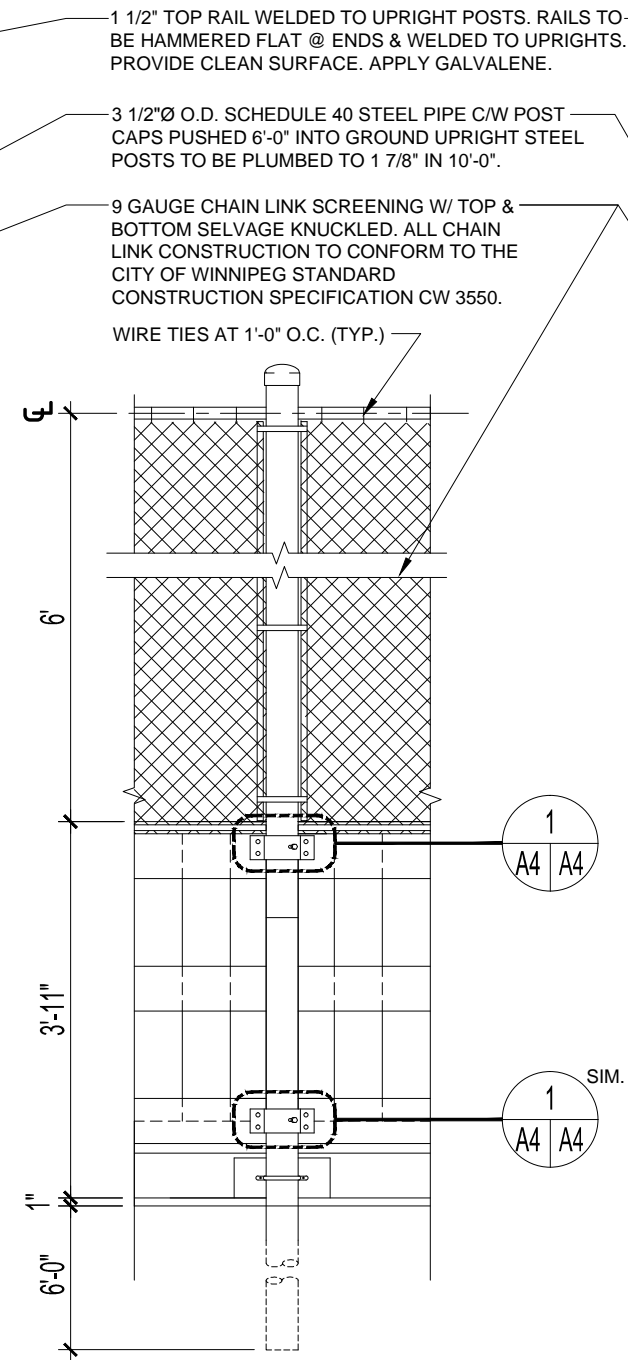
V:\A-CAD\ARCHIVE\SPCS\HOCKEY RINK



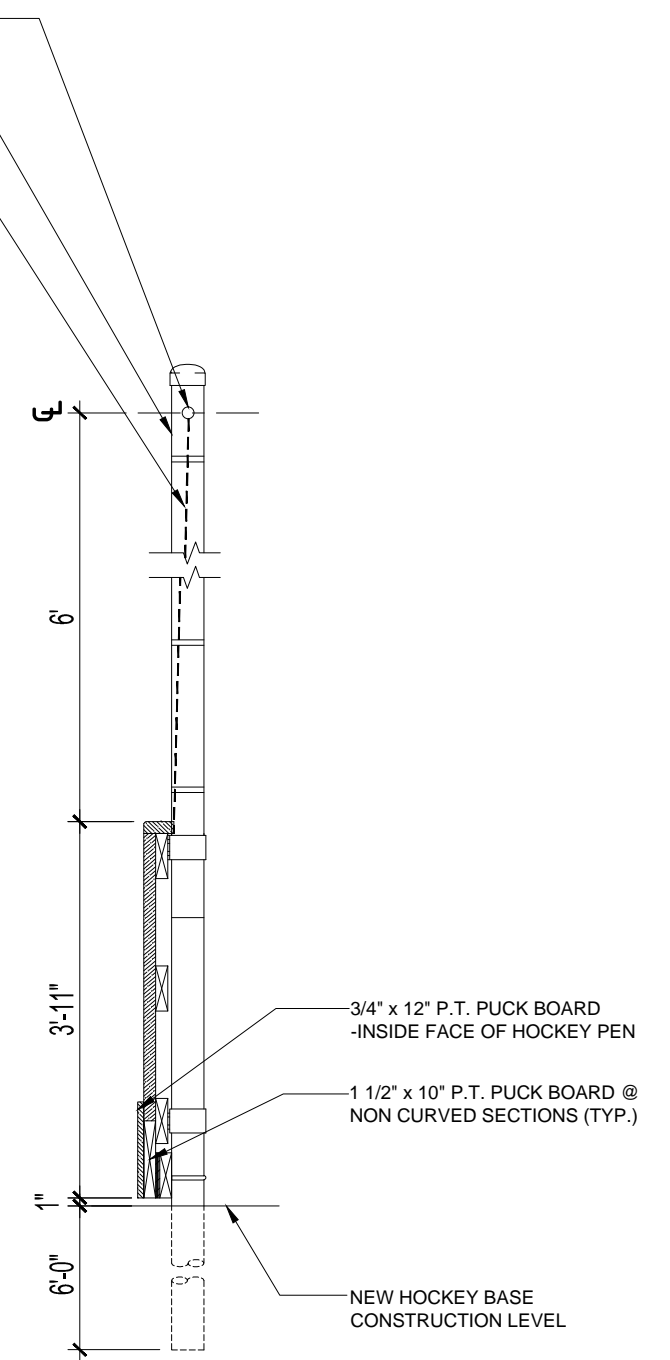
**ELEVATION - RINK END BOARDS**  
SCALE: 1/2" = 1'-0"



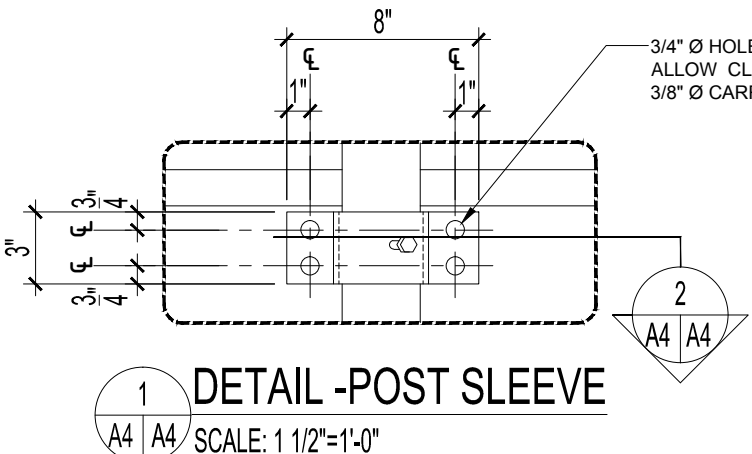
**SECTION - RINK END BOARDS**  
SCALE: 1/2" = 1'-0"



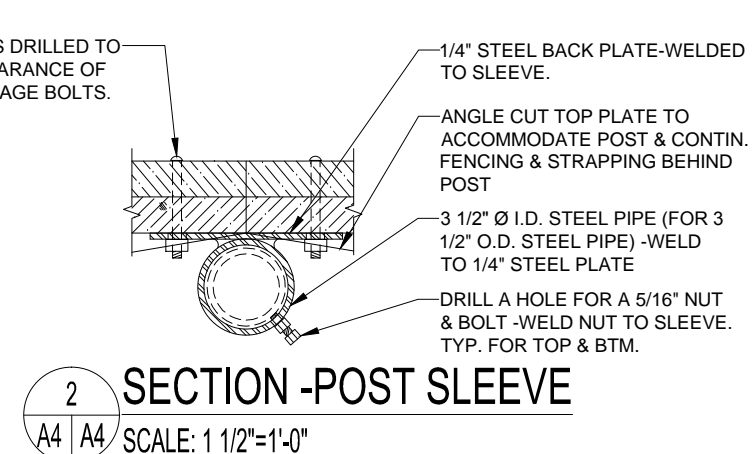
**ELEVATION - TYPICAL RINK BOARDS W/ FENCING**  
SCALE: 1/2" = 1'-0"



**SECTION - TYPICAL RINK BOARDS W/ FENCING**  
SCALE: 1/2" = 1'-0"



**1 DETAIL - POST SLEEVE**  
SCALE: 1 1/2" = 1'-0"



**2 SECTION - POST SLEEVE**  
SCALE: 1 1/2" = 1'-0"

THE CITY OF WINNIPEG PLANNING, PROPERTY AND DEVELOPMENT DEPARTMENT MUNICIPAL ACCOMMODATIONS DIVISION 3-65 GARRY STREET, R3C 4K4			SHEET TITLE <b>RINK BOARD ELEVATIONS W/ FENCING; SECTIONS &amp; DETAILS</b>		PROJECT <b>PARK CITY WEST COMMUNITY CENTRE OUTDOOR RINK REPLACEMENT</b> 115 SANFORD FLEMING ROAD BID OPP#617-2017 CC-064	
DRAWN BY:	DESIGNED BY:	CHECKED BY:	APPROVED BY:	DATE:	SCALE:	SHEET No:
JAW				2017.07.21	AS SHOWN	A4
				eFILE:	PROJECT No:	
				2017087V0.dwg	2017-087	