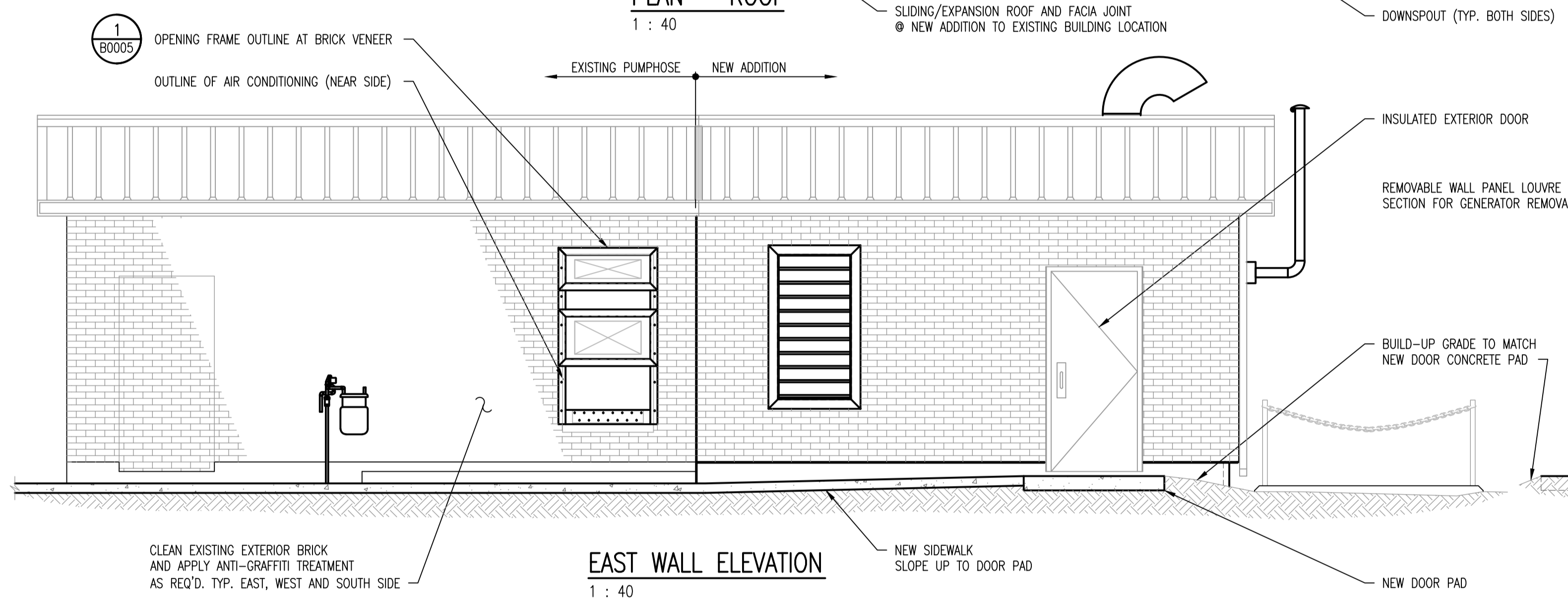
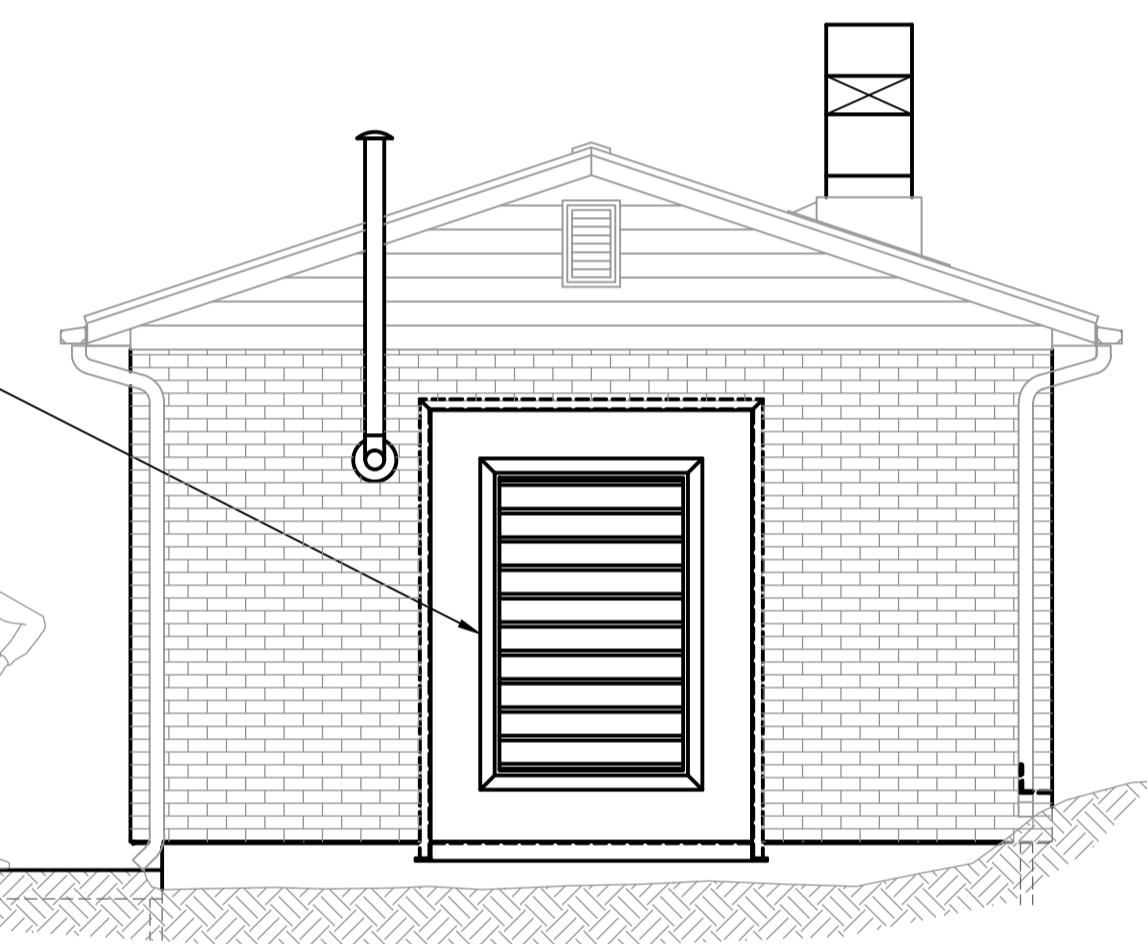


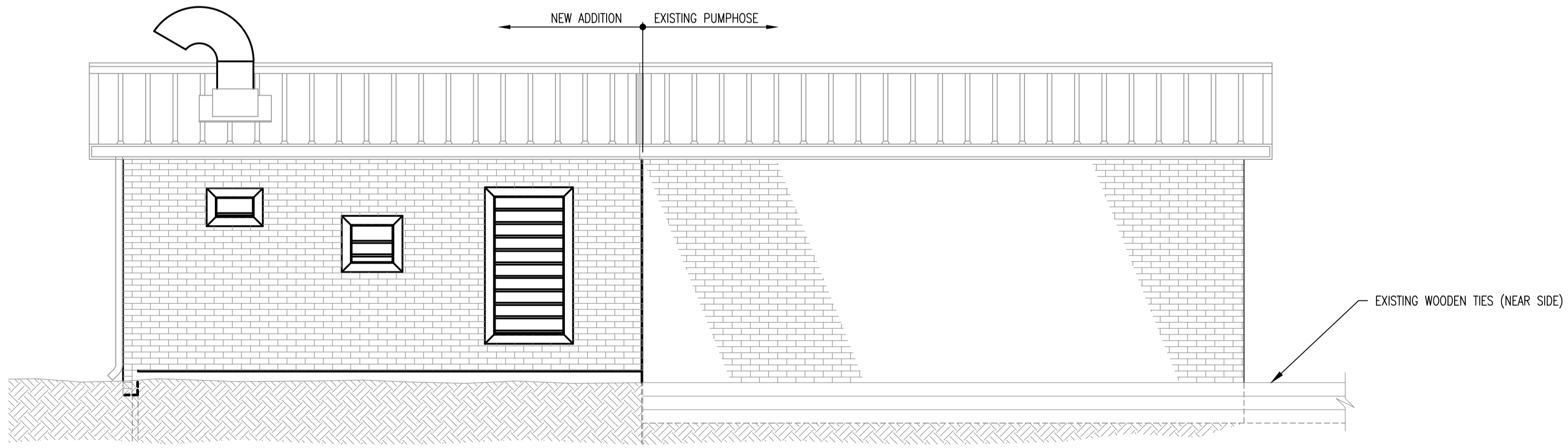
SOUTH WALL ELEVATION
1 : 40



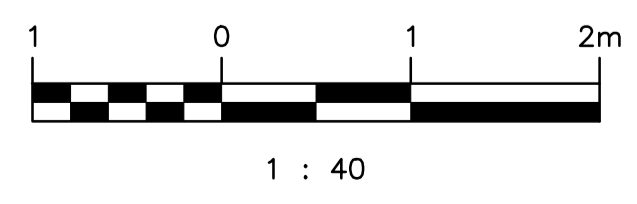
EAST WALL ELEVATION
1 : 40



NORTH WALL ELEVATION
1 : 40



WEST WALL ELEVATION
1 : 40



DRAWING NUMBER	REFERENCE DRAWINGS
401	CHARLESWOOD INTERCEPTOR SUPERSTRUCTURE DETAILS FOR PUMPING STATION
400B	CHARLESWOOD INTERCEPTOR PUMPING STATION AT COMMUNITY ROW & ROBLIN BLVD.
1-0130L-B0004	PUMPING STATION UPGRADES - PUMPHOUSE - DETAILS
1-0130L-B0003	PUMPING STATION UPGRADES - PUMPHOUSE - PLAN AND ELEVATIONS
1-0130L-S0002	PUMPING STATION UPGRADES - NOTES SHEET 2
1-0130L-S0001	PUMPING STATION UPGRADES - NOTES SHEET 1

PROJECT SPECIFIC

NO.	REVISIONS	DATE	DESIGN	CHECK
00	ISSUED FOR TENDER, BID OPP. 639-2017	2017-07-25	TD	BJC

SNC-LAVALIN INC.
148 Nature Park Way
Winnipeg, MB, Canada R3P 0X7
204-786-8080

DESIGNED BY: T. DEGER
DRAWN BY: B. DICKSON
SCALE: 1:40
DATE: 2017-05-15
CONSULTANT NO.:

CHECKED BY: B. CLEVEN
APPROVED BY: B. CLEVEN
ISSUED FOR CONSTRUCTION
BY:
DATE:

ENGINEER'S SEAL
PRELIMINARY
NOT TO BE
USED FOR
CONSTRUCTION

THE CITY OF WINNIPEG
WATER AND WASTE DEPARTMENT

COMMUNITY ROW WASTEWATER PUMPING STATION
2017 UPGRADES
PUMPHOUSE - EXTERIOR
PLAN & ELEVATIONS

CITY DRAWING NUMBER: 1-0130L-B0002
SHEET: 001
REV.: 00
SIZE: A1