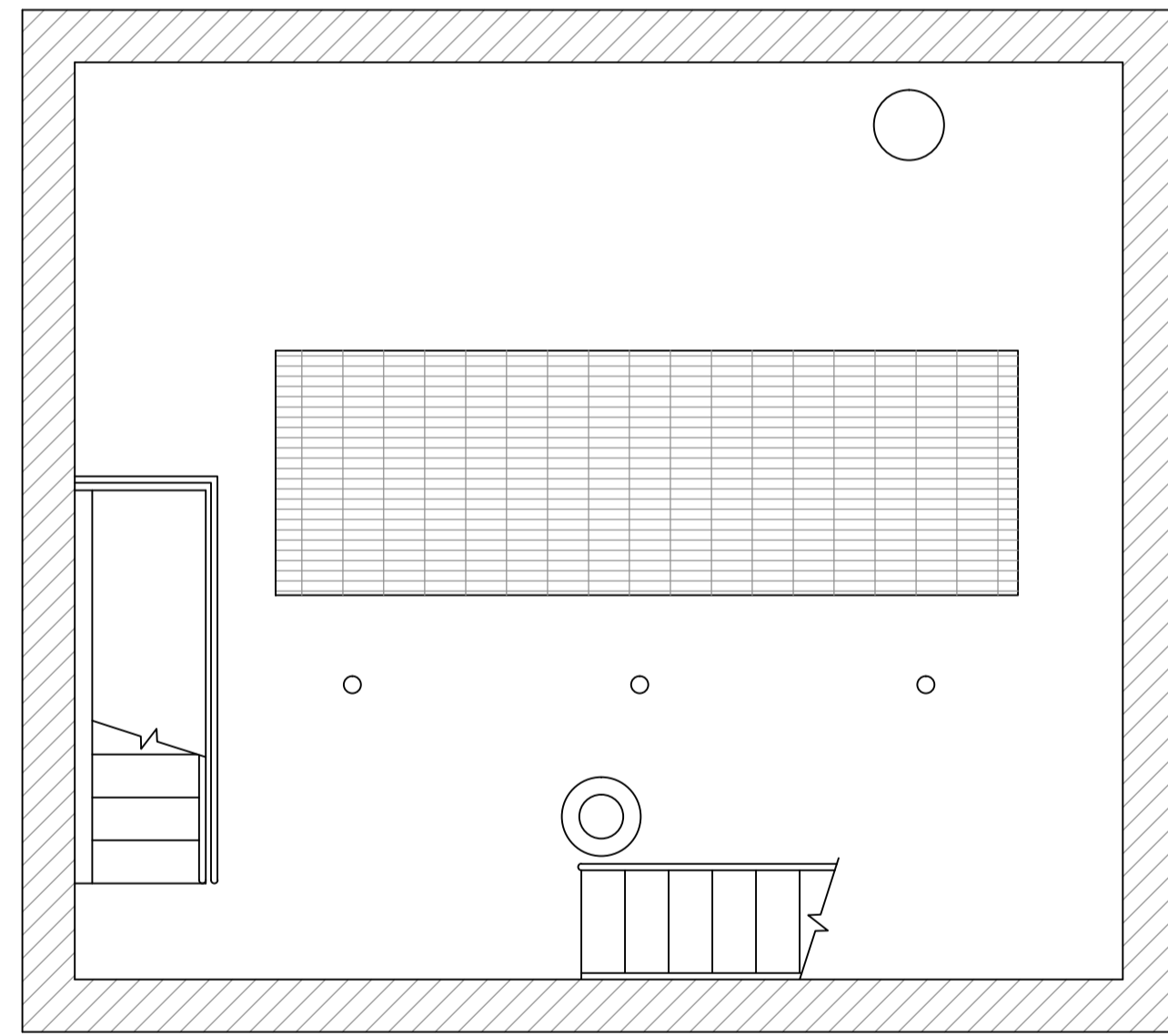
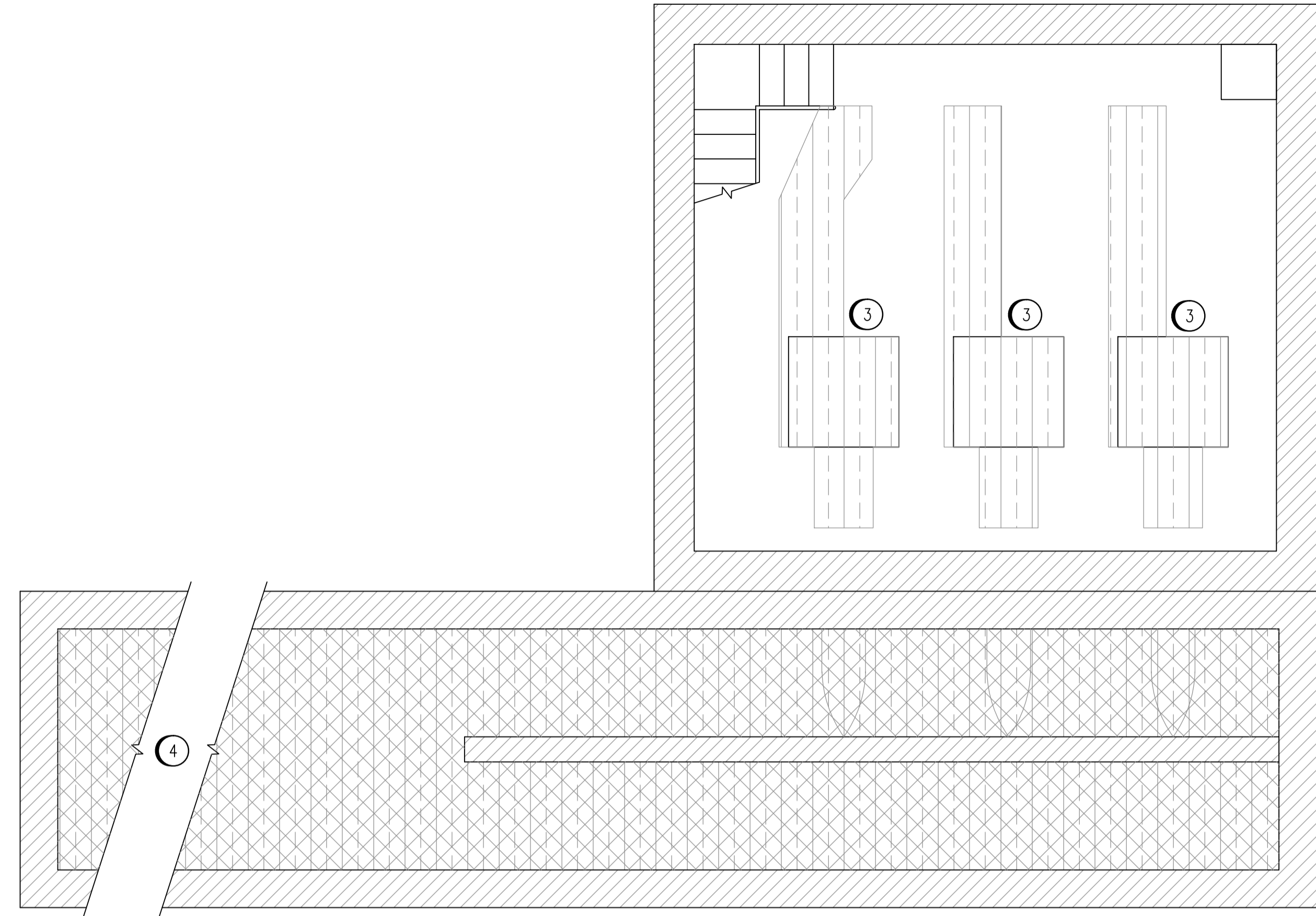


MAIN FLOOR PLAN
SCALE: 1 : 40



MOTOR ROOM FLOOR PLAN
SCALE: 1 : 40



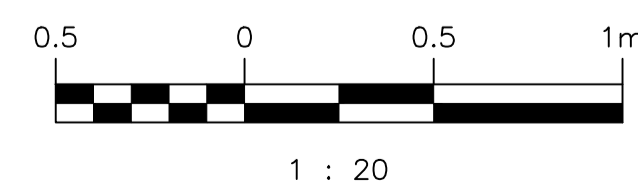
PUMP ROOM FLOOR PLAN
SCALE: 1 : 40

SPECIFIC NOTES:

- ① THE REQUIRED TEMPERATURE CODE FOR ALL HAZARDOUS LOCATIONS ON THIS DRAWING IS T2A (280°C).
- ② THE BUILDING IS PROVIDED WITH 6 ACH OF CONTINUOUS VENTILATION, WITH UP TO 75% RECIRCULATION IN COLD WEATHER TO CONSERVE HEAT.
- ③ THE AREAS IN THE PUMP ROOM THAT ARE BELOW PIPING, ON WHICH MOISTURE MAY CONDENSE, ARE A CATEGORY 1 (WET) LOCATION.
- ④ THE WETWELL IS A CATEGORY 1 (WET) AND ZONE 1, GROUP IIA LOCATION.

LEGEND

	HAZARDOUS ZONE 1, GROUP IIA
	HAZARDOUS ZONE 2, GROUP IIA
	CATEGORY 1 (MOISTURE)
	CATEGORY 2 (CORROSIVE)
	CATEGORY 2 WET (MOISTURE & CORROSIVE)



NO.	REVISIONS	DATE	DESIGN	CHECK
00	ISSUED FOR TENDER, BID OPP. 639-2017	2017-07-25	BJC	TMC

 SNC-LAVALIN INC. 148 Nature Park Way Winnipeg, MB, Canada R3P 0X7 204-786-8080	
DESIGNED BY: B. CLEVEN	CHECKED BY: T. CHURCH
DRAWN BY: Y. KONIG	APPROVED BY: B. CLEVEN
SCALE: 1:40	ISSUED FOR CONSTRUCTION BY: DATE:
DATE: 2017/02/06	DATE:
CONSULTANT NO.:	

ENGINEER'S SEAL
PRELIMINARY
NOT TO BE
USED FOR
CONSTRUCTION

 THE CITY OF WINNIPEG WATER AND WASTE DEPARTMENT			
COMMUNITY ROW WASTEWATER PUMPING STATION 2017 UPGRADES HAZARDOUS AND WET LOCATION PLAN			
CITY DRAWING NUMBER	SHEET	REV.	SIZE
1-0130L-E0007	001	00	A1

DRAWING NUMBER	REFERENCE DRAWINGS
----------------	--------------------