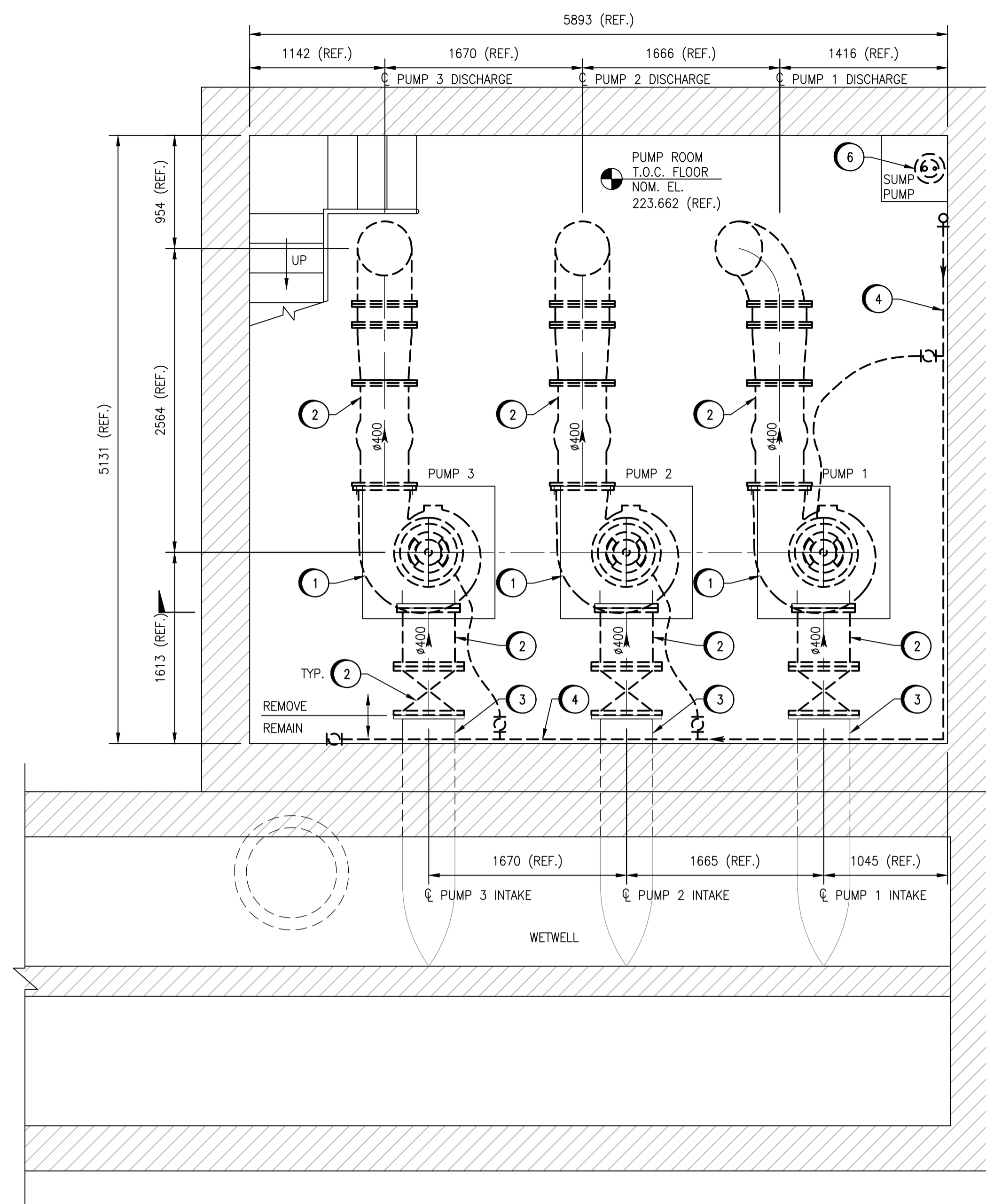
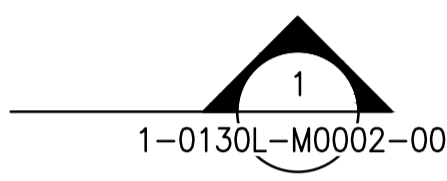
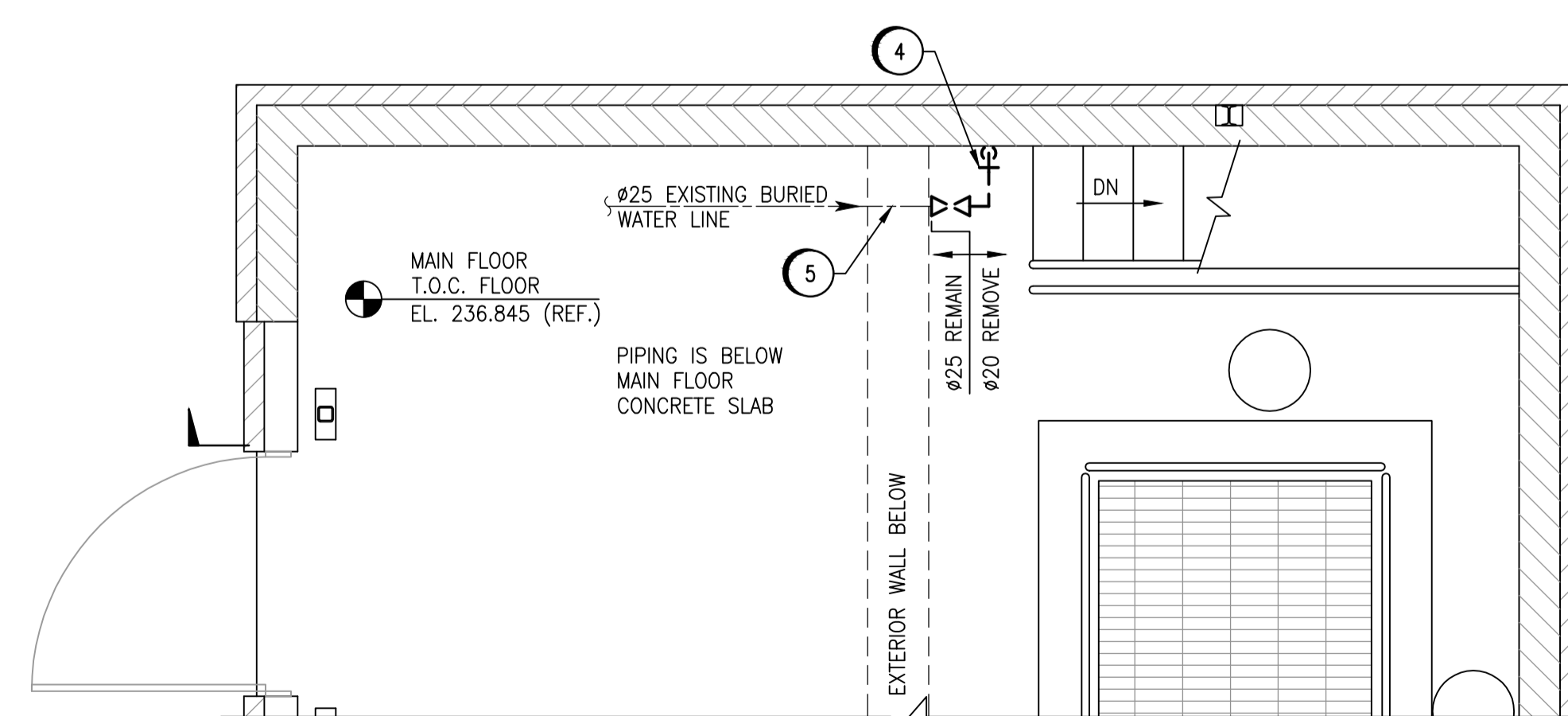
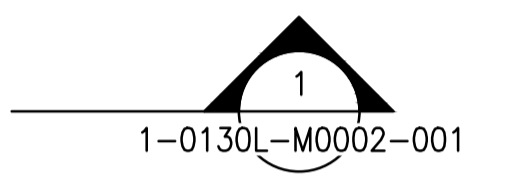


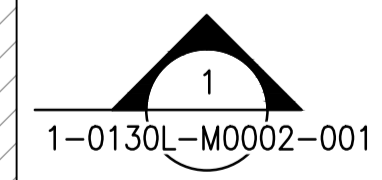
**MOTOR ROOM FLOOR PLAN - DEMOLITION**  
SCALE: 1 : 30



**PUMP ROOM FLOOR PLAN - DEMOLITION**  
SCALE: 1 : 30



**PARTIAL MAIN FLOOR PLAN - DEMOLITION**  
SCALE: 1 : 30

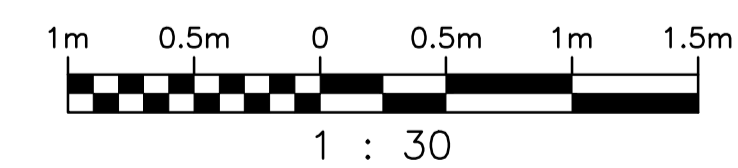


**GENERAL NOTES:**

- COORDINATE WITH DIVISION 26 TO REMOVE ELECTRICAL WHERE ELECTRICAL EQUIPMENT IS TO BE REMOVED.
- ALL BUILDING MODIFICATIONS REQUIRED FOR THE INSTALLATION OF MECHANICAL EQUIPMENT ARE PART OF THE CONTRACTORS SCOPE OF WORK.

**DEMOLITION NOTES:**

- REMOVE EXISTING MOTORS, SHAFTS AND PUMPS.
- REMOVE EXISTING VALVES, FLANGES AND PIPING.
- EXISTING FLANGE AND PIPE THROUGH WALL TO REMAIN.
- REMOVE EXISTING WATER PIPING, VALVES, METER, FITTINGS & SUPPORTS.
- EXISTING WATER PIPING TO REMAIN.
- REMOVE EXISTING SUMP PUMP, PIPING, VALVES & FITTINGS.



NO.	REVISIONS	DATE	DESIGN	CHECK
00	ISSUED FOR TENDER, BID OPP. 639-2017	2017-07-25	FZ	BJC

SNC-LAVALIN INC. 148 Nature Park Way Winnipeg, MB, Canada R3P 0X7 204-786-8080	
DESIGNED BY: F. ZURZOLO	CHECKED BY: B. CLEVEN
DRAWN BY: C. FETTERLY	APPROVED BY: B. CLEVEN
SCALE: 1 : 30	ISSUED FOR CONSTRUCTION
DATE: 2017/04/21	BY: DATE:
CONSULTANT NO.:	

ENGINEER'S SEAL  
**PRELIMINARY**  
NOT TO BE  
USED FOR  
CONSTRUCTION

**THE CITY OF WINNIPEG**  
WATER AND WASTE DEPARTMENT

COMMUNITY ROW WASTEWATER PUMPING STATION  
2017 UPGRADES  
PLAN  
MECHANICAL  
MAIN FLOOR, MOTOR ROOM & PUMP ROOM - DEMOLITION

CITY DRAWING NUMBER: 1-0130L-M0001 SHEET: 001 REV.: 00 SIZE: A1