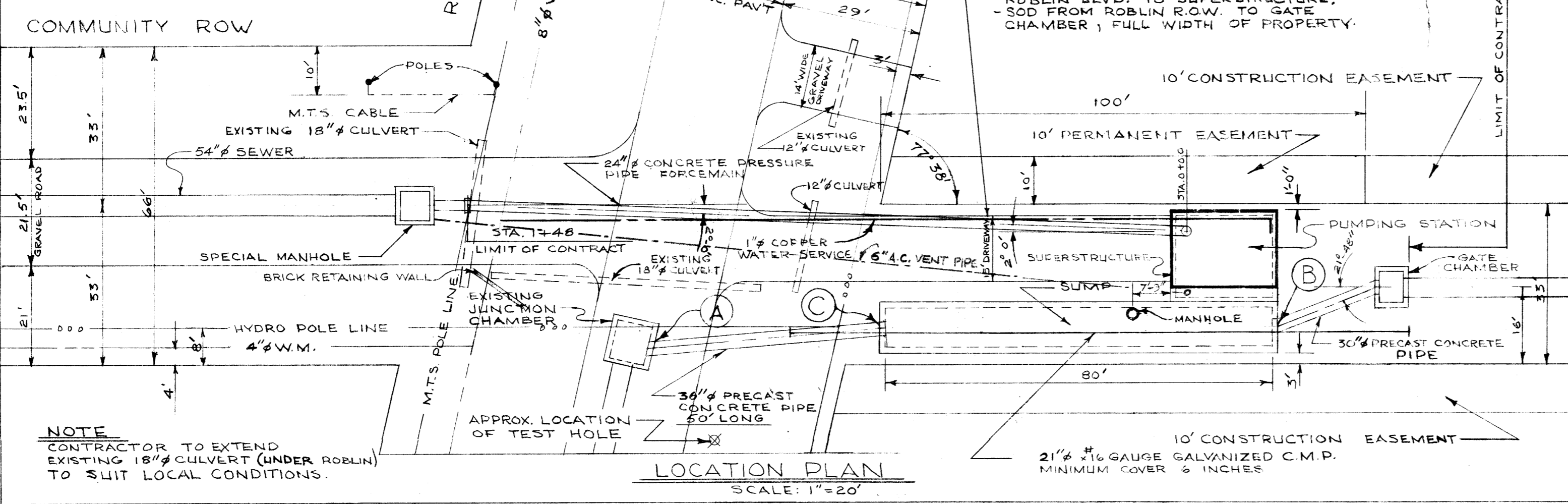


REF. or Drawing No. **399**  
 DETAILS  
 file # SP10086

**NOTE:**  
 CONTACT M.T.S. BURIED PLANT PROTECTION SERVICE AT 947-7267 24 HOURS PRIOR TO COMMENCING EXCAVATION.

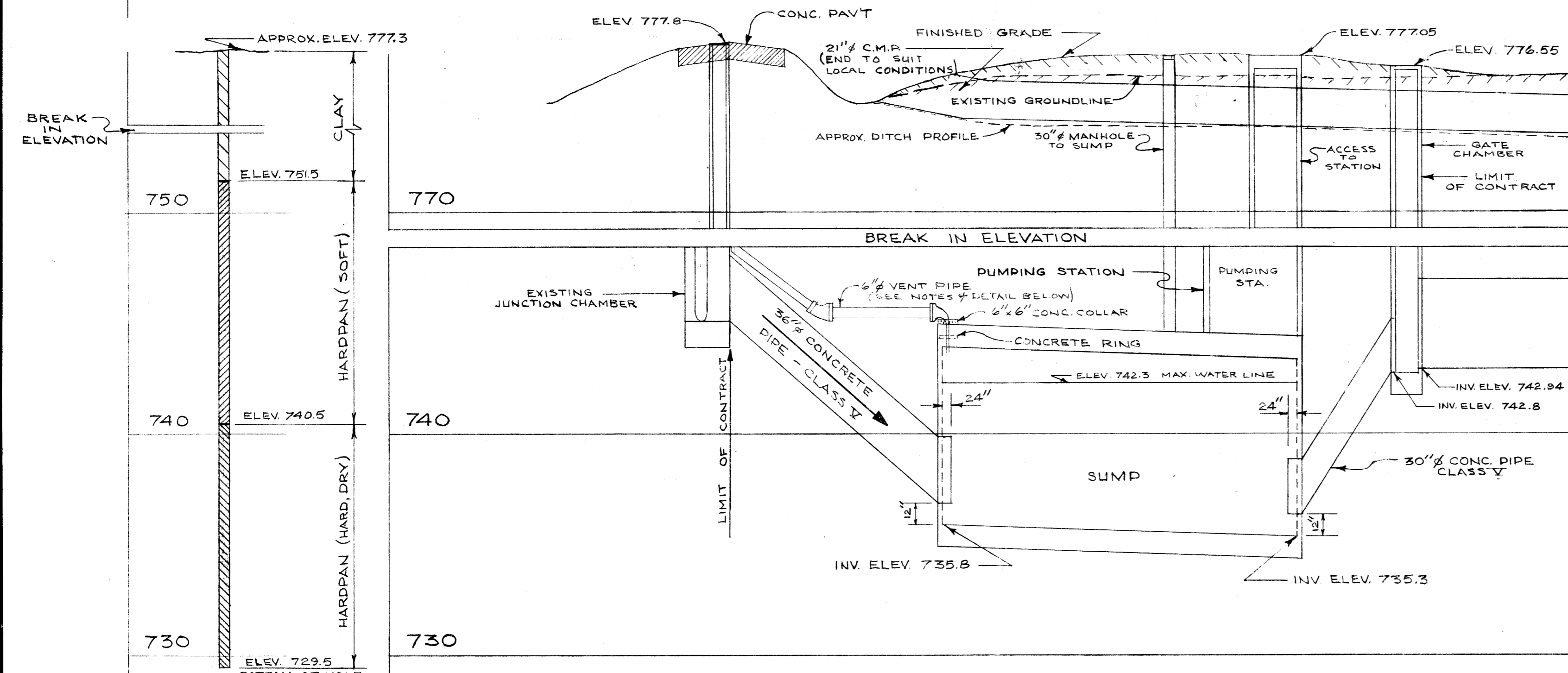
**NOTE:**  
 CONTRACTOR TO MAINTAIN A BUFFER ZONE OF TREES BETWEEN DWELLING AND SUPERSTRUCTURE ON EASEMENT. CONTRACTOR SHALL OBTAIN ENGINEERS APPROVAL BEFORE REMOVING TREES.

**NOTE:**  
 AN ACCESS DRIVEWAY OF CRUSHED ROCK (6" DEEP & 15' WIDE) SHALL BE PROVIDED FROM ROBBLIN BLVD. TO SUPERSTRUCTURE. SOD FROM ROBBLIN R.O.W. TO GATE CHAMBER, FULL WIDTH OF PROPERTY.



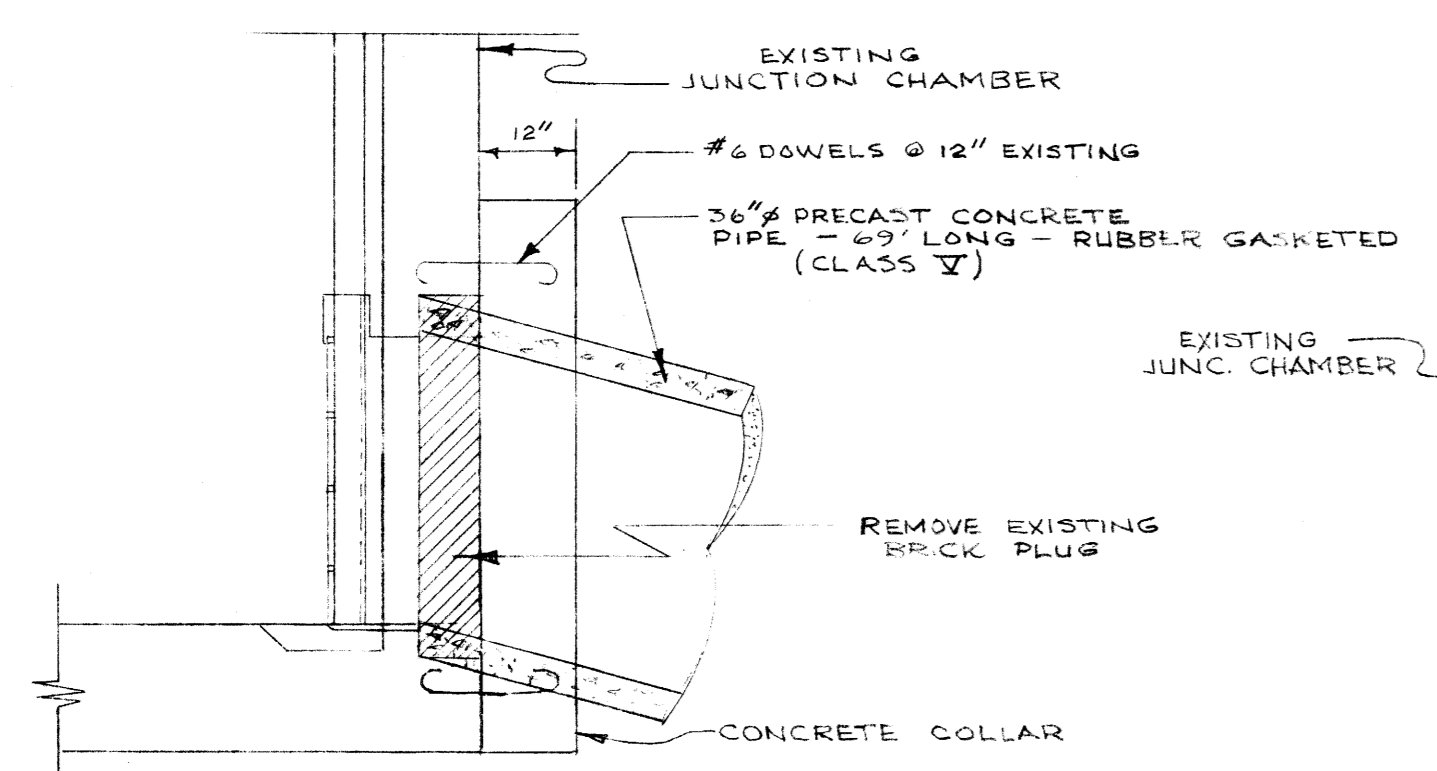
**NOTE:**  
 CONTRACTOR TO EXTEND EXISTING 18" CULVERT (UNDER ROBBLIN) TO SUIT LOCAL CONDITIONS.

**LOCATION PLAN**  
 SCALE: 1"=20'



**PROFILE OF PUMPING STA - SUMP & CONNECTIONS TO CHAMBERS**  
 SCALE: HOR. 1"=20' VERT. 1"=4'

**TESTHOLE**  
 APPROX. LOCATION SHOWN ON LOCATION PLAN

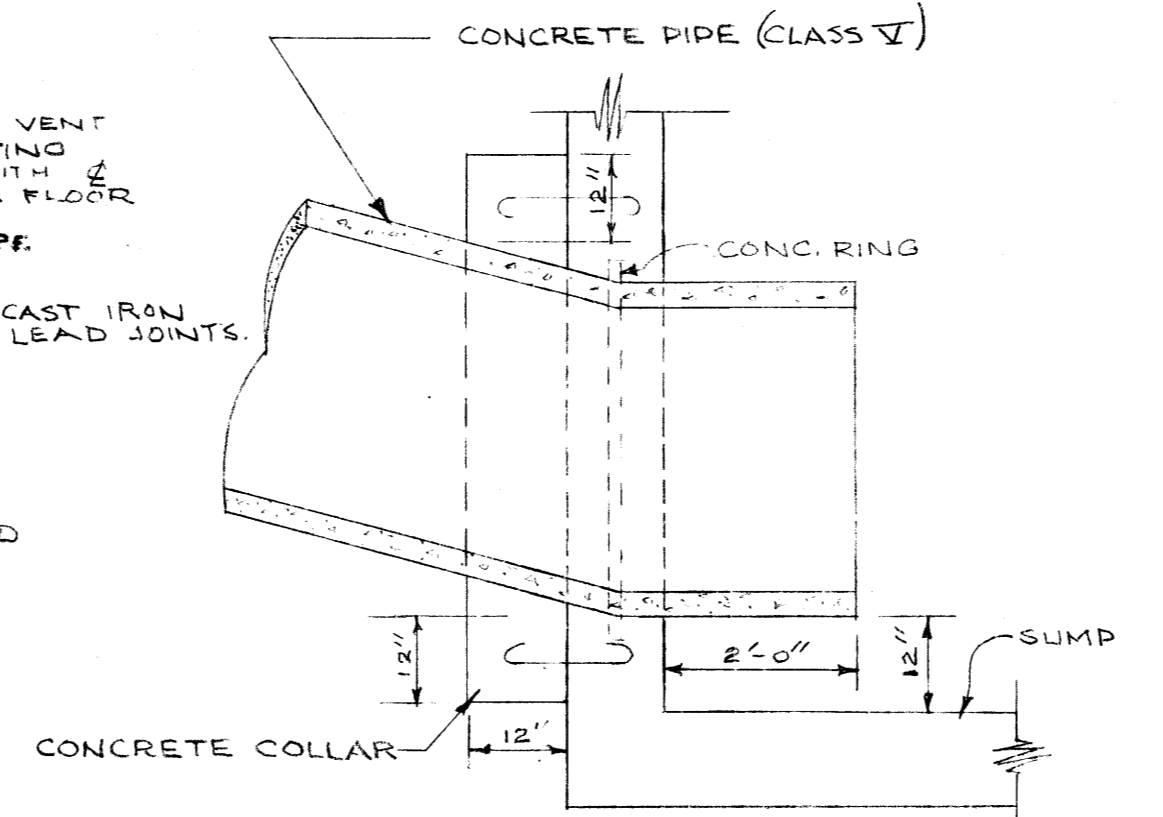


**DETAIL OF CONNECTION AT (A)**  
 SCALE: 1/2"=1'-0"

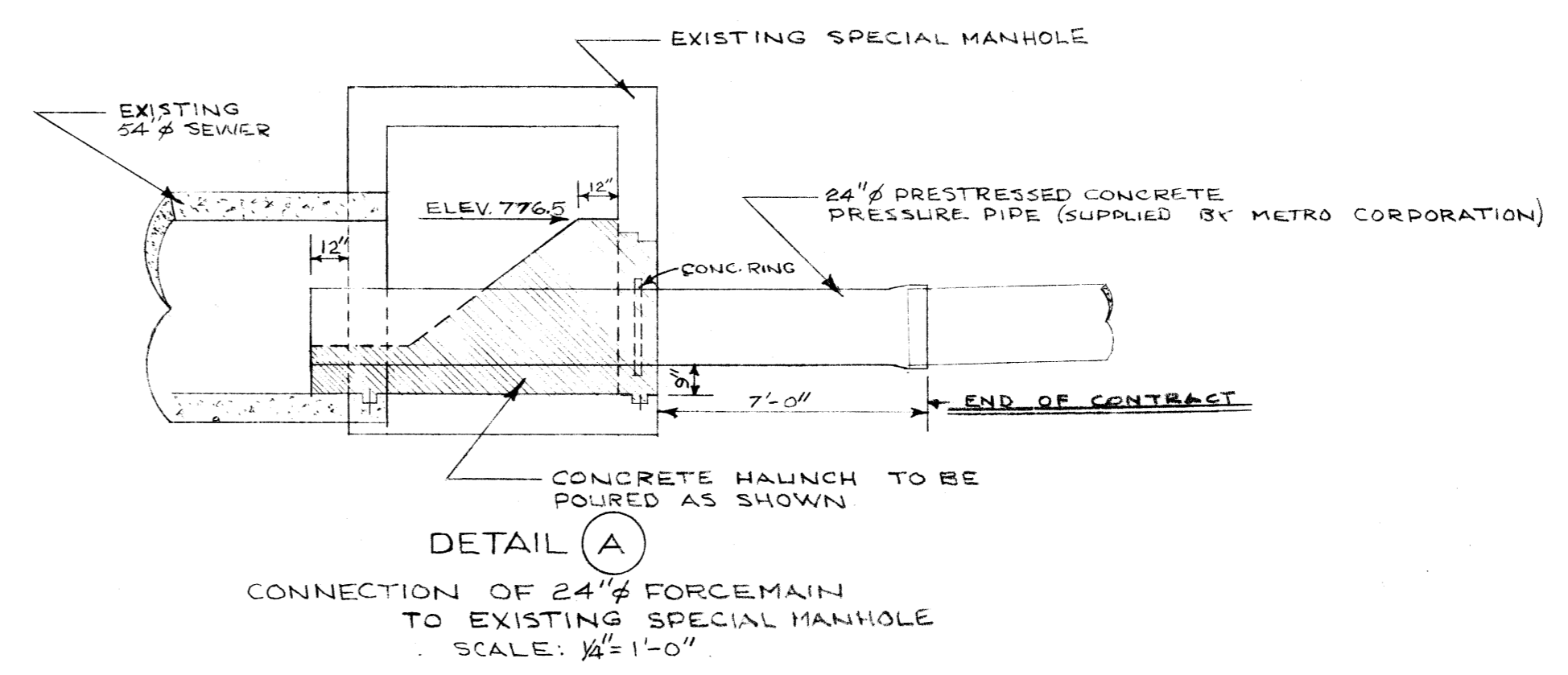
**NOTES:**

- 1) CONTRACTOR TO MAKE VENT CONNECTION TO EXISTING JUNCTION CHAMBER WITH 11'-0" ABOVE CHAMBER FLOOR
- 2) VENT TO BE 6" G.A.C. PIPE (CLASS 150)
- 3) ALL ELBOWS TO BE 6" CAST IRON WITH BELL ENDS AND LEAD JOINTS.
- 4) 1/4" x 3" GALVANIZED BAND BOLTED TO WALL (3 REQUIRED)

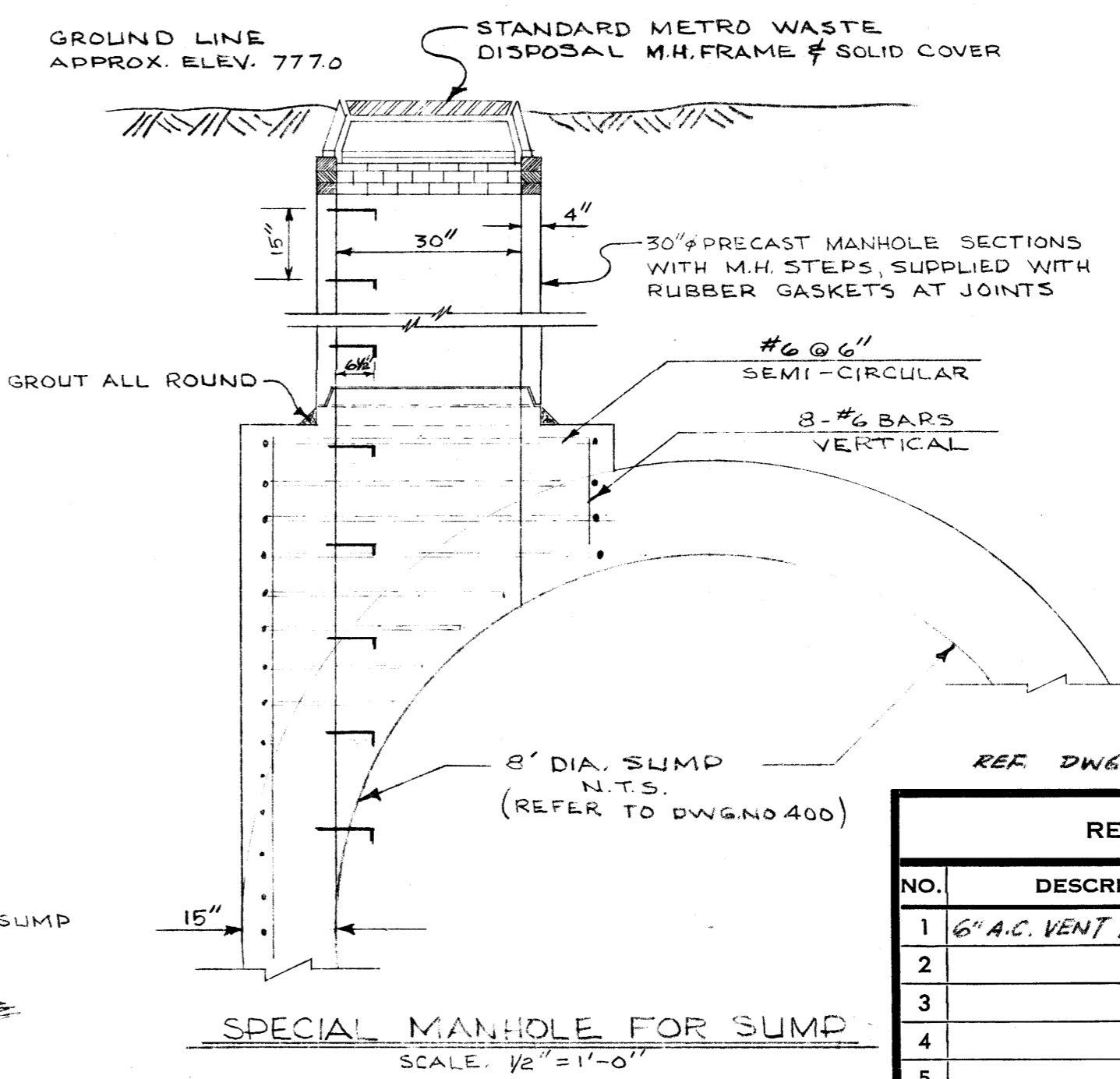
**DETAIL OF VENT PIPE CONNECTION TO EXISTING JUNCTION CHAMBER**  
 SCALE: 1/2"=1'-0"



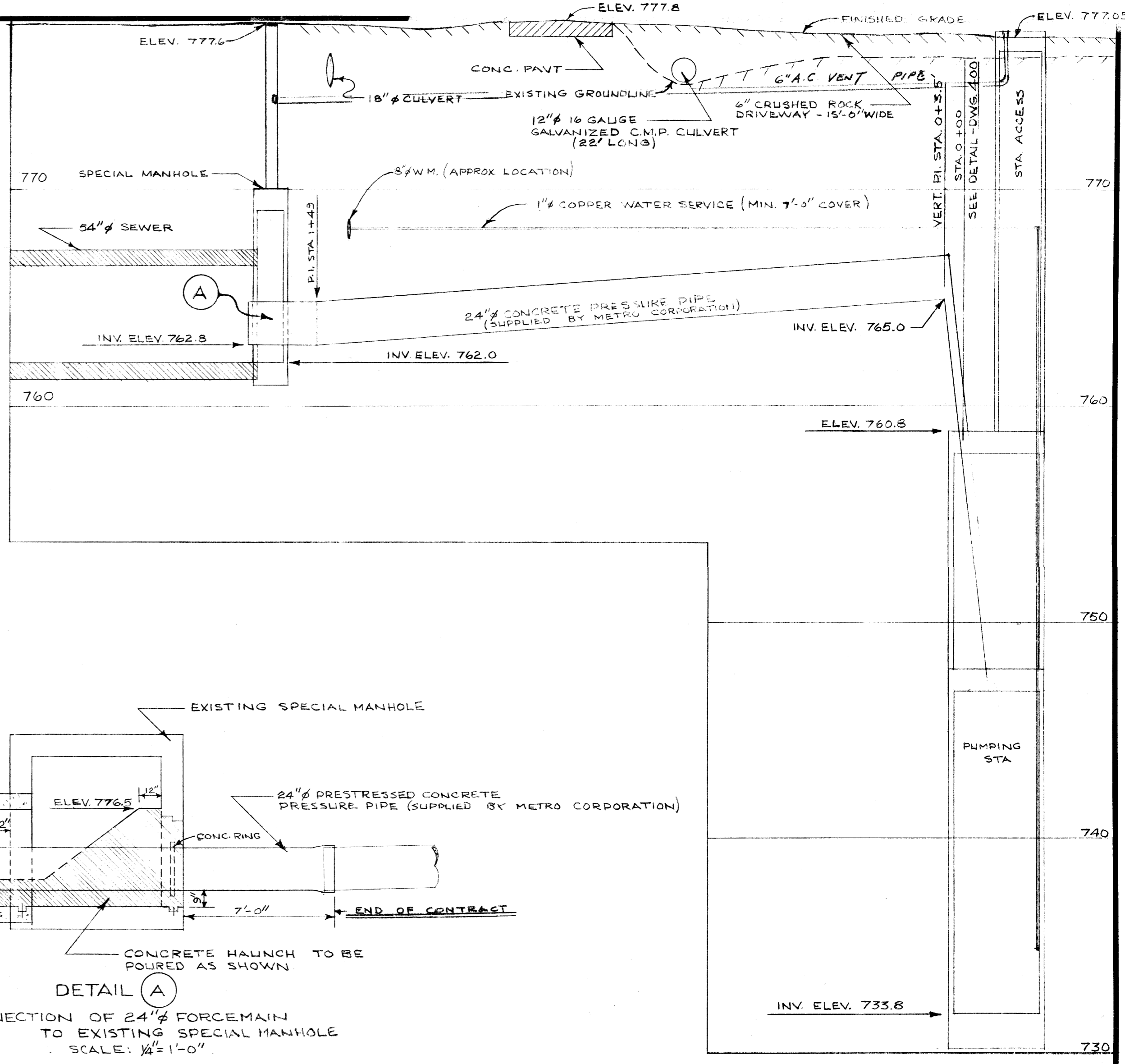
**DETAIL OF CONNECTION AT (B) & (C)**  
 SCALE: 1/2"=1'-0"



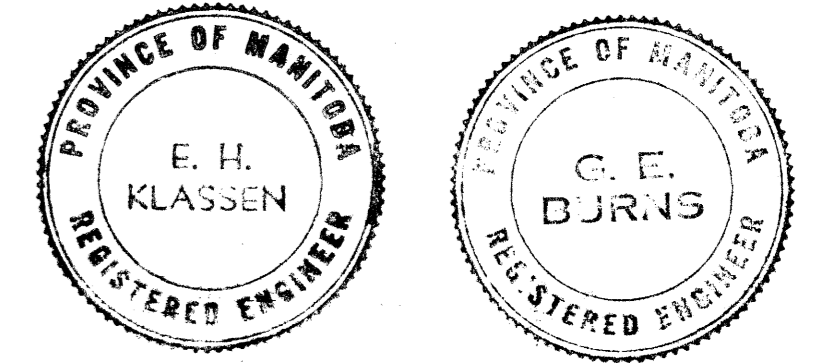
**DETAIL (A)**  
 CONNECTION OF 24" FORCEMAIN TO EXISTING SPECIAL MANHOLE  
 SCALE: 1/4"=1'-0"



**SPECIAL MANHOLE FOR SUMP**  
 SCALE: 1/2"=1'-0"



**PROFILE OF 24" FORCEMAIN**  
 SCALE: HOR. 1"=20' VERT. 1"=4'



REVISIONS				THE METROPOLITAN CORPORATION OF GREATER WINNIPEG WATERWORKS & WASTE DISPOSAL DIVISION SEWAGE DISPOSAL BRANCH	
NO.	DESCRIPTION	DATE	BY	APPROVED BY	DRAWING NO.
1	6" G.A.C. VENT PIPE ADDED 11/06/86 AK				399
2					
3					
4					
5					
6					
7					
8					